

# [MS-FSBEPS]: Browser Engine Processing and Status Protocol Specification

---

## Intellectual Property Rights Notice for Open Specifications Documentation

- **Technical Documentation.** Microsoft publishes Open Specifications documentation for protocols, file formats, languages, standards as well as overviews of the interaction among each of these technologies.
- **Copyrights.** This documentation is covered by Microsoft copyrights. Regardless of any other terms that are contained in the terms of use for the Microsoft website that hosts this documentation, you may make copies of it in order to develop implementations of the technologies described in the Open Specifications and may distribute portions of it in your implementations using these technologies or your documentation as necessary to properly document the implementation. You may also distribute in your implementation, with or without modification, any schema, IDL's, or code samples that are included in the documentation. This permission also applies to any documents that are referenced in the Open Specifications.
- **No Trade Secrets.** Microsoft does not claim any trade secret rights in this documentation.
- **Patents.** Microsoft has patents that may cover your implementations of the technologies described in the Open Specifications. Neither this notice nor Microsoft's delivery of the documentation grants any licenses under those or any other Microsoft patents. However, a given Open Specification may be covered by Microsoft's Open Specification Promise (available here: <http://www.microsoft.com/interop/osp>) or the Community Promise (available here: <http://www.microsoft.com/interop/cp/default.mspx>). If you would prefer a written license, or if the technologies described in the Open Specifications are not covered by the Open Specifications Promise or Community Promise, as applicable, patent licenses are available by contacting [iplq@microsoft.com](mailto:iplq@microsoft.com).
- **Trademarks.** The names of companies and products contained in this documentation may be covered by trademarks or similar intellectual property rights. This notice does not grant any licenses under those rights.
- **Fictitious Names.** The example companies, organizations, products, domain names, e-mail addresses, logos, people, places, and events depicted in this documentation are fictitious. No association with any real company, organization, product, domain name, email address, logo, person, place, or event is intended or should be inferred.

**Reservation of Rights.** All other rights are reserved, and this notice does not grant any rights other than specifically described above, whether by implication, estoppel, or otherwise.

**Tools.** The Open Specifications do not require the use of Microsoft programming tools or programming environments in order for you to develop an implementation. If you have access to Microsoft programming tools and environments you are free to take advantage of them. Certain Open Specifications are intended for use in conjunction with publicly available standard specifications and network programming art, and assumes that the reader either is familiar with the aforementioned material or has immediate access to it.

## Revision Summary

Date	Revision History	Revision Class	Comments
11/06/2009	0.1	Major	Initial Availability
02/19/2010	1.0	Editorial	Revised and edited the technical content
03/31/2010	1.01	Editorial	Revised and edited the technical content
04/30/2010	1.02	Editorial	Revised and edited the technical content
06/07/2010	1.03	Editorial	Revised and edited the technical content
06/29/2010	1.04	Editorial	Changed language and formatting in the technical content.
07/23/2010	1.04	No change	No changes to the meaning, language, or formatting of the technical content.
09/27/2010	1.04	No change	No changes to the meaning, language, or formatting of the technical content.
11/15/2010	1.04	No change	No changes to the meaning, language, or formatting of the technical content.
12/17/2010	1.04	No change	No changes to the meaning, language, or formatting of the technical content.
03/18/2011	1.04	No change	No changes to the meaning, language, or formatting of the technical content.
06/10/2011	1.04	No change	No changes to the meaning, language, or formatting of the technical content.

# Table of Contents

<b>1</b>	<b>Introduction .....</b>	<b>6</b>
1.1	Glossary .....	6
1.2	References.....	6
1.2.1	Normative References.....	6
1.2.2	Informative References .....	8
1.3	Protocol Overview (Synopsis) .....	8
1.4	Relationship to Other Protocols.....	9
1.5	Prerequisites/Preconditions .....	9
1.6	Applicability Statement.....	9
1.7	Versioning and Capability Negotiation.....	9
1.8	Vendor-Extensible Fields.....	9
1.9	Standards Assignments .....	9
<b>2</b>	<b>Messages.....</b>	<b>10</b>
2.1	Transport.....	10
2.2	Common Message Syntax .....	10
2.2.1	Namespaces .....	10
2.2.2	Messages .....	11
2.2.3	Elements.....	11
2.2.4	Complex Types .....	11
2.2.4.1	ArrayOfString.....	12
2.2.4.2	ProcessingFault .....	12
2.2.4.3	Link .....	12
2.2.4.4	ThreadData.....	13
2.2.4.5	ArrayOfThreadData .....	14
2.2.4.6	ContinuousVariable .....	14
2.2.4.7	ExtractorStat .....	14
2.2.4.8	ArrayOfExtractorStat.....	15
2.2.4.9	BEStatistics.....	15
2.2.4.10	PipelineStat.....	16
2.2.4.11	ArrayOfPipelineStat .....	17
2.2.4.12	ResultSet.....	17
2.2.4.13	Status .....	18
2.2.4.14	Statistics .....	18
2.2.5	Simple Types .....	18
2.2.6	Attributes.....	19
2.2.7	Groups.....	19
2.2.8	Attribute Groups .....	19
<b>3</b>	<b>Protocol Details .....</b>	<b>20</b>
3.1	IBEServer Server Details .....	20
3.1.1	Abstract Data Model .....	20
3.1.2	Timers .....	20
3.1.3	Initialization .....	20
3.1.4	Message Processing Events and Sequencing Rules.....	20
3.1.4.1	Process .....	20
3.1.4.1.1	Messages .....	21
3.1.4.1.1.1	IBEServer_Process_InputMessage .....	21
3.1.4.1.1.2	IBEServer_Process_OutputMessage .....	21
3.1.4.1.1.3	IBEServer_Process_ProcessingFaultFault_FaultMessage.....	21

3.1.4.1.2	Elements.....	21
3.1.4.1.2.1	Process .....	21
3.1.4.1.2.2	ProcessResponse .....	22
3.1.4.1.2.3	ProcessingFault .....	22
3.1.4.1.3	Complex Types .....	22
3.1.4.1.4	Simple Types.....	23
3.1.4.1.5	Attributes.....	23
3.1.4.1.6	Groups.....	23
3.1.4.1.7	Attribute Groups .....	23
3.1.5	Timer Events .....	23
3.1.6	Other Local Events .....	23
3.2	IStatServer Server Details .....	23
3.2.1	Abstract Data Model .....	23
3.2.1.1	Statistics .....	23
3.2.1.2	Status .....	24
3.2.2	Timers .....	25
3.2.3	Initialization .....	25
3.2.4	Message Processing Events and Sequencing Rules.....	25
3.2.4.1	GetStatus .....	25
3.2.4.1.1	Messages .....	26
3.2.4.1.1.1	IStatServer_GetStatus_InputMessage.....	26
3.2.4.1.1.2	IStatServer_GetStatus_OutputMessage.....	26
3.2.4.1.2	Elements.....	26
3.2.4.1.2.1	GetStatus .....	26
3.2.4.1.2.2	GetStatusResponse.....	27
3.2.4.1.3	Complex Types .....	27
3.2.4.1.4	Simple Types.....	27
3.2.4.1.5	Attributes.....	27
3.2.4.1.6	Groups.....	27
3.2.4.1.7	Attribute Groups .....	27
3.2.4.2	GetStatistics .....	27
3.2.4.2.1	Messages .....	28
3.2.4.2.1.1	IStatServer_GetStatistics_InputMessage .....	28
3.2.4.2.1.2	IStatServer_GetStatistics_OutputMessage .....	28
3.2.4.2.2	Elements.....	28
3.2.4.2.2.1	GetStatistics .....	28
3.2.4.2.2.2	GetStatisticsResponse .....	28
3.2.4.2.3	Complex Types .....	29
3.2.4.2.4	Simple Types.....	29
3.2.4.2.5	Attributes.....	29
3.2.4.2.6	Groups.....	29
3.2.4.2.7	Attribute Groups .....	29
3.2.4.3	Ping .....	29
3.2.4.3.1	Messages .....	29
3.2.4.3.1.1	IStatServer_Ping_InputMessage.....	29
3.2.4.3.1.2	IStatServer_Ping_OutputMessage.....	30
3.2.4.3.2	Element .....	30
3.2.4.3.3	Elements.....	30
3.2.4.3.3.1	Ping .....	30
3.2.4.3.3.2	PingResponse.....	30
3.2.4.3.4	Complex Types .....	30
3.2.4.3.5	Simple Types.....	30
3.2.4.3.6	Attributes.....	30

3.2.4.3.7 Groups.....	31
3.2.4.3.8 Attribute Groups .....	31
3.2.5 Timer Events .....	31
3.2.6 Other Local Events .....	31
<b>4 Protocol Examples.....</b>	<b>32</b>
4.1 Process.....	32
4.1.1 Example HTML document .....	32
4.1.2 Request .....	32
4.1.3 Response .....	33
4.1.4 Base64 decoded HTML document .....	34
<b>5 Security.....</b>	<b>35</b>
5.1 Security Considerations for Implementers.....	35
5.2 Index of Security Parameters .....	35
<b>6 Appendix A: Full WSDL.....</b>	<b>36</b>
6.1 Processing Web service WSDL .....	36
6.1.1 http://serverURI:processPort/BrowserEngine?wsdl=wsdl0 .....	41
6.1.2 http://serverURI:processPort/BrowserEngine?xsd=xsd0.....	42
6.1.3 http://serverURI:processPort/BrowserEngine?xsd=xsd1.....	42
6.1.4 http://serverURI:processPort/BrowserEngine?xsd=xsd2.....	43
6.1.5 http://serverURI:processPort/BrowserEngine?xsd=xsd3.....	44
6.2 Status Web service WSDL .....	44
6.2.1 http://serverURI:statusPort/BrowserEngine/Stat?wsdl=wsdl0 .....	51
6.2.2 http://serverURI:statusPort/BrowserEngine/Stat?xsd=xsd0.....	52
6.2.3 http://serverURI:statusPort/BrowserEngine/Stat?xsd=xsd1.....	53
6.2.4 http://serverURI:statusPort/BrowserEngine/Stat?xsd=xsd2.....	54
<b>7 Appendix B: Product Behavior.....</b>	<b>56</b>
<b>8 Change Tracking.....</b>	<b>57</b>
<b>9 Index .....</b>	<b>58</b>

# 1 Introduction

This document specifies the Browser Engine Processing and Status Protocol. This protocol handles communication between a protocol client and a protocol server. The protocol server supports methods for processing documents and querying the state of the protocol server.

## 1.1 Glossary

The following terms are defined in [\[MS-GLOS\]](#):

**HTTP proxy**  
**Hypertext Transfer Protocol (HTTP)**  
**Kerberos**  
**NT LAN Manager (NTLM) Authentication Protocol**  
**Transmission Control Protocol (TCP)**  
**UTF-8**

The following terms are defined in [\[MS-OFCGLOS\]](#):

**endpoint**  
**forward link**  
**hex-encoded string**  
**host name**  
**HTTP GET**  
**Hypertext Markup Language (HTML)**  
**Hypertext Transfer Protocol 1.1 (HTTP/1.1)**  
**Simple Object Access Protocol (SOAP)**  
**SOAP action**  
**SOAP body**  
**SOAP message**  
**TCP/IP**  
**Uniform Resource Identifier (URI)**  
**virtual directory**  
**Web service**  
**Web Services Description Language (WSDL)**  
**XML namespace**  
**XML namespace prefix**

The following terms are specific to this document:

**MAY, SHOULD, MUST, SHOULD NOT, MUST NOT:** These terms (in all caps) are used as described in [\[RFC2119\]](#). All statements of optional behavior use either MAY, SHOULD, or SHOULD NOT.

## 1.2 References

### 1.2.1 Normative References

We conduct frequent surveys of the normative references to assure their continued availability. If you have any issue with finding a normative reference, please contact [dochelp@microsoft.com](mailto:dochelp@microsoft.com). We will assist you in finding the relevant information. Please check the archive site, <http://msdn2.microsoft.com/en-us/library/E4BD6494-06AD-4aed-9823-445E921C9624>, as an additional source.

[DOM Level 1] Worldwide Web Consortium (W3C), "Document Object Model (DOM) Level 1 Specification", Version 1.0, W3C Recommendation, October 1998, <http://www.w3.org/TR/1998/REC-DOM-Level-1-19981001/>

[HTML] World Wide Web Consortium, "HTML 4.01 Specification", December 1999, <http://www.w3.org/TR/html4/>

[RFC2119] Bradner, S., "Key words for use in RFCs to Indicate Requirement Levels", BCP 14, RFC 2119, March 1997, <http://www.rfc-editor.org/rfc/rfc2119.txt>

[RFC2396] Berners-Lee, T., Fielding, R., and Masinter, L., "Uniform Resource Identifiers (URI): Generic Syntax", RFC 2396, August 1998, <http://www.ietf.org/rfc/rfc2396.txt>

[RFC2616] Fielding, R., Gettys, J., Mogul, J., et al., "Hypertext Transfer Protocol -- HTTP/1.1", RFC 2616, June 1999, <http://www.ietf.org/rfc/rfc2616.txt>

[SOAP1.1] Box, D., Ehnebuske, D., Kakivaya, G., et al., "Simple Object Access Protocol (SOAP) 1.1", May 2000, <http://www.w3.org/TR/2000/NOTE-SOAP-20000508/>

[SOAP1.2/1] Gudgin, M., Hadley, M., Mendelsohn, N., Moreau, J., and Nielsen, H.F., "SOAP Version 1.2 Part 1: Messaging Framework", W3C Recommendation, June 2003, <http://www.w3.org/TR/2003/REC-soap12-part1-20030624>

[SOAP1.2/2] Gudgin, M., Hadley, M., Mendelsohn, N., Moreau, J., and Nielsen, H.F., "SOAP Version 1.2 Part 2: Adjuncts", W3C Recommendation, June 2003, <http://www.w3.org/TR/2003/REC-soap12-part2-20030624>

[WSA1.0 Core] Gudgin, M., Ed., Hadley, M., Ed., and Rogers, Tony, Ed., "Web Services Addressing 1.0 - Core", W3C Recommendation 9 May 2006, <http://www.w3.org/TR/2006/REC-ws-addr-core-20060509/ws-addr-core.pdf>

[WSA1.0 SOAP Binding] Gudgin, M., Ed., Hadley, M., Ed., and Rogers, T., Ed., "Web Services Addressing 1.0 - SOAP Binding", W3C Recommendation 9 May 2006, <http://www.w3.org/TR/2006/REC-ws-addr-soap-20060509/ws-addr-soap.pdf>

[WSA1.0] World Wide Web Consortium, "Web Services Addressing 1.0 - WSDL Binding", W3C Candidate Recommendation, May 2006, <http://www.w3.org/TR/2006/CR-ws-addr-wsdl-20060529/>

[WSDL] Christensen, E., Curbera, F., Meredith, G., and Weerawarana, S., "Web Services Description Language (WSDL) 1.1", W3C Note, March 2001, <http://www.w3.org/TR/2001/NOTE-wsdl-20010315>

[WS-MetadataExchange] Ballinger, K. et al., "Web Services Metadata Exchange (WS-MetadataExchange) Version 1.1", August 2006, <http://specs.xmlsoap.org/ws/2004/09/mex/WS-MetadataExchange.pdf>

[WSS] OASIS, "Web Services Security: SOAP Message Security 1.1 (WS-Security 2004)", February 2006, <http://www.oasis-open.org/committees/download.php/16790/wss-v1.1-spec-os-SOAPMessageSecurity.pdf>

[WSSC1.3] Lawrence, K., Kaler, C., Nadalin, A., et al., "WS-SecureConversation 1.3", March 2007, <http://docs.oasis-open.org/ws-sx/ws-secureconversation/200512/ws-secureconversation-1.3-os.html>

[WSSE 1.0] Nadalin, A., Kaler, C., Hallam-Baker, P., and Monzillo, R., Eds., "Web Services Security: SOAP Message Security 1.0 (WS-Security 2004)", OASIS Standard 200401, March 2004, <http://docs.oasis-open.org/wss/2004/01/oasis-200401-wss-soap-message-security-1.0.pdf>

[WSSP1.2] OASIS Standard, "WS-SecurityPolicy 1.2", July 2007, <http://docs.oasis-open.org/ws-sx/ws-securitypolicy/200702/ws-securitypolicy-1.2-spec-os.pdf>

[XMLNS] Bray, T., Hollander, D., Layman, A., et al., Eds., "Namespaces in XML 1.0 (Third Edition)", W3C Recommendation, December 2009, <http://www.w3.org/TR/2009/REC-xml-names-20091208/>

[XMLSCHEMA1] Thompson, H.S., Ed., Beech, D., Ed., Maloney, M., Ed., and Mendelsohn, N., Ed., "XML Schema Part 1: Structures", W3C Recommendation, May 2001, <http://www.w3.org/TR/2001/REC-xmlschema-1-20010502/>

[XMLSCHEMA2] Biron, P.V., Ed. and Malhotra, A., Ed., "XML Schema Part 2: Datatypes", W3C Recommendation, May 2001, <http://www.w3.org/TR/2001/REC-xmlschema-2-20010502/>

### 1.2.2 Informative References

[MS-GLOS] Microsoft Corporation, "[Windows Protocols Master Glossary](#)".

[MS-OFCGLOS] Microsoft Corporation, "[Microsoft Office Master Glossary](#)".

### 1.3 Protocol Overview (Synopsis)

This document specifies the Browser Engine Processing and Status Protocol, which enables the communication between a protocol client and a protocol server.

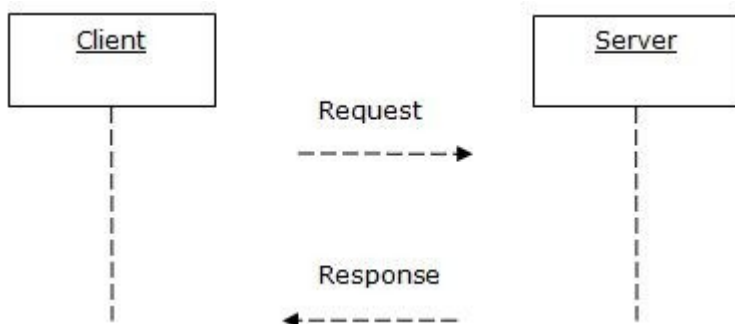
This protocol has two main functions:

**Processing:** Enables protocol clients to direct the protocol server to process specified Web documents. The Web documents, along with external dependencies such as ECMAScript files, are downloaded and evaluated on the protocol server, after which forwarding links and the resulting **HTML** document are produced and sent to the protocol client.

**Status and Statistics:** Enables the protocol client to query about the status and statistics of the protocol server.

This protocol is a SOAP-based protocol that uses HTTP/1.1 (Hypertext Transfer Protocol 1.1) as its transport and is a stateless protocol.

The protocol server never initiates any communication with the protocol client.

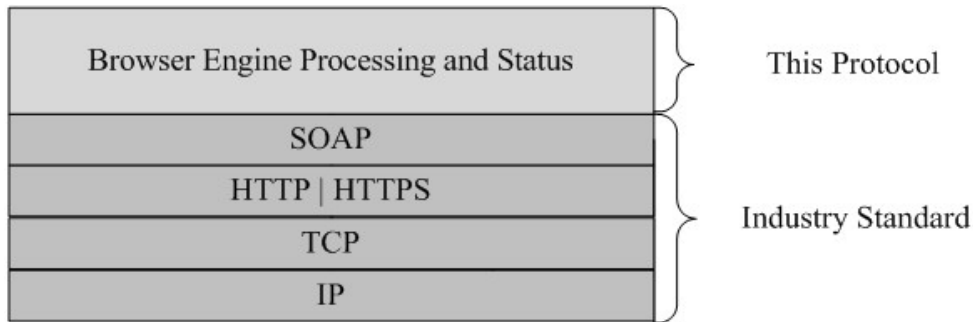


**Figure 1: Protocol overview**



## 1.4 Relationship to Other Protocols

This protocol uses SOAP (as specified in [\[SOAP1.2/1\]](#)) and [\[SOAP1.2/2\]](#)) over **HTTP/1.1** (as specified in [\[RFC2616\]](#)) for communication.



**Figure 2: This protocol in relation to other protocols**

## 1.5 Prerequisites/Preconditions

The protocol client is aware of the address and the interface port associated with the protocol server prior to calling this protocol, as specified in section [2.1](#).

This protocol assumes that the underlying protocols have authenticated the connection.

## 1.6 Applicability Statement

This protocol is designed to remotely process Web documents, to produce content and **forward links** that would typically not be available without executing ECMAScripts and events contained in the Web document.

## 1.7 Versioning and Capability Negotiation

None.

## 1.8 Vendor-Extensible Fields

None.

## 1.9 Standards Assignments

None.

## 2 Messages

### 2.1 Transport

The protocol is carried out over two separate **Web services**.

Each Web service MUST support SOAP (Simple Object Access Protocol) (as specified in [\[SOAP1.2/1\]](#) and [\[SOAP1.2/2\]](#)) over **HTTP** (as specified in [\[RFC2616\]](#)). They support **SOAP message** security and security contexts as specified in [\[WSSE 1.0\]](#) and [\[WSSC1.3\]](#). Authentication is performed through **Kerberos** or **NTLM**.

Each **virtual directory** supports HTTP (as specified in [\[RFC2616\]](#)) over **TCP/IP**.

The following **TCP** ports are exposed by the protocol server as endpoints for the HTTP over TCP/IP transport.

- **processPort:** Used for processing communication.
- **statusPort:** Used for status and statistics communication.

The following virtual directories MUST be specified by the protocol server as **endpoints** for the HTTP and **SOAP** over HTTP transports.

- **Processing Web service:** This virtual directory, as specified in section [3.1](#), is exposed at the following **URI**: `http://serverURI:[processPort]/BrowserEngine/http`.
- **Status Web service:** This virtual directory, as specified in section [3.2](#), is exposed at the following URI: `http://serverURI[:statusPort]/BrowserEngine/Stat/http`.

### 2.2 Common Message Syntax

This section specifies common definitions that are used by this protocol. The syntax of the definitions use an XML Schema, as defined in [\[XMLSCHEMA1\]](#) and [\[XMLSCHEMA2\]](#), and a WSDL (Web Services Description Language), as defined in [\[WSDL\]](#).

#### 2.2.1 Namespaces

This protocol specifies and references **XML namespaces** using the mechanisms specified in [\[XMLNS\]](#). Although this document associates an **XML namespace prefix** for each XML namespace that is used, the choice of any particular XML namespace prefix is implementation-specific.

Prefix	Namespace URI	Reference
wsdl	<code>http://schemas.xmlsoap.org/wsdl/</code>	<a href="#">[WSDL]</a>
wsa10	<code>http://www.w3.org/2005/08/addressing</code>	<a href="#">[WSA1.0 SOAP Binding]</a> <a href="#">[WSA1.0 Core]</a>
wsx	<code>http://schemas.xmlsoap.org/ws/2004/09/mex</code>	<a href="#">[WS-MetaDataExchange]</a>
soap12	<code>http://schemas.xmlsoap.org/wsdl/soap12/</code>	<a href="#">[SOAP1.2/1]</a> <a href="#">[SOAP1.2/2]</a>

Prefix	Namespace URI	Reference
soapenc	http://schemas.xmlsoap.org/soap/encoding/	<a href="#">[SOAP1.1]</a>
wsu	http://docs.oasis-open.org/wss/2004/01/oasis-200401-wss-wssecurity-utility-1.0.xsd	<a href="#">[WSS]</a>
wsp	http://schemas.xmlsoap.org/ws/2004/09/policy	[WS-Policy]
wsaw	http://www.w3.org/2006/05/addressing/wsdl	<a href="#">[WSA1.0]</a>
sp	http://schemas.xmlsoap.org/ws/2005/07/securitypolicy	<a href="#">[WSSP1.2]</a>
xs	http://www.w3.org/2001/XMLSchema	<a href="#">[XMLSCHEMA1]</a> <a href="#">[XMLSCHEMA2]</a>
tns	http://schemas.datacontract.org/2004/07/Microsoft.SharePoint.Search.Extended.BrowserEngine.Util	This document
i0	http://Microsoft.SharePoint.Search.Extended.BrowserEngine.Server	This document

## 2.2.2 Messages

None.

## 2.2.3 Elements

None.

## 2.2.4 Complex Types

The following table summarizes the set of common XML Schema complex type definitions that are defined in this specification. XML Schema complex type definitions that are specific to a particular operation are specified with the operation.

The following sections specify the complex types that this protocol uses.

Complex type	Description
<b>ArrayOfString</b>	An array of elements of type <b>string</b> .
<b>ProcessingFault</b>	Contains information about processing errors.
<b>Link</b>	Contains information about a URI.
<b>ThreadData</b>	Contains information about URIs that are being processed.
<b>ArrayOfThreadData</b>	An array of elements of type <b>ThreadData</b> .
<b>ContinuousVariable</b>	Contains historic state for a value.
<b>ExtractorStat</b>	Contains statistics for a link extractor.
<b>ArrayOfExtractorStat</b>	An array of elements of type <b>ExtractorStat</b> .
<b>BEStatistics</b>	Contains statistics for a protocol server.

Complex type	Description
<b>PipelineStat</b>	Contains statistics for a pipeline.
<b>ArrayOfPipelineStat</b>	An array of elements of type <b>PipelineStat</b> .
<b>ResultSet</b>	Contains processing results.
<b>Status</b>	Contains status for a protocol server.
<b>Statistics</b>	Contains statistics for a protocol server.

#### 2.2.4.1 ArrayOfString

An array of **string** values that are used in messages within the protocol.

```
<xs:complexType name="ArrayOfstring">
  <xs:sequence>
    <xs:element minOccurs="0" maxOccurs="unbounded" name="string"
      nillable="true" type="xs:string"/>
  </xs:sequence>
</xs:complexType>
```

**String:** A **string** value.

#### 2.2.4.2 ProcessingFault

An object that the protocol server returns on an unsuccessful completion of the **Process** operation. See section [3.1.4.1](#) for more information about the **Process** operation.

```
<xs:complexType name="ProcessingFault">
  <xs:sequence>
    <xs:element minOccurs="0" name="Code" nillable="true" type="xs:string"/>
    <xs:element minOccurs="0" name="Text" nillable="true" type="xs:string"/>
  </xs:sequence>
</xs:complexType>
```

**Code:** A **string** that specifies the error code of the error that took place.

**Text:** A **string** that specifies the description of the cause of the error.

#### 2.2.4.3 Link

An object that stores information about a URI.

```
<xs:complexType name="Link">
  <xs:sequence>
    <xs:element minOccurs="0" name="Origin" nillable="true" type="xs:string"/>
    <xs:element minOccurs="0" name="Uri" nillable="true" type="xs:string"/>
  </xs:sequence>
</xs:complexType>
```

**Origin:** A **string** that specifies the location of the URI in the document. This **string** is either an HTML element in the source document, or it is an element associated with the Document Object Model (DOM) core structure, as specified in [\[DOM Level 1\]](#).

**Uri:** A **string** that represents a URI, as specified in [\[RFC2396\]](#).

The values of **Origin** elements are specified in the following table. All element references are specified in [\[HTML\]](#).

Origin	Description
META	URI was extracted from a <META/> element.
META-REFRESH	URI was extracted from the <b>refresh</b> attribute of a <META/> element.
SCRIPT_JS	URI was extracted from a <SCRIPT/> element.
DOCUMENT.LOCATION	URI was extracted from an ECMAScript document.location DOM structure element.
WINDOW.OPEN	URI was extracted from an ECMAScript window.open method.
A	URI was extracted from an <A/> element.
AREA	URI was extracted from an <AREA/> element.
FRAME	URI was extracted from a <FRAME/> element.
IMG	URI was extracted from an <IMG/> element.
IFRAME	URI was extracted from an <IFRAME/> element.
LAYER	URI was extracted from the <b>src</b> attribute of a <LAYER/> element.
LINK	URI was extracted from a <LINK/> element.
OBJECT	URI was extracted from an <OBJECT/> element.
PARAM	URI was extracted from a <PARAM/> element.
SCRIPT	URI was extracted from a <SCRIPT/> element.
BASE	URI was extracted from a <BASE/> element.
BGSOUND	URI was extracted from a <BGSOUND/> element.
BODY	URI was extracted from a <BODY/> element.
EMBED	URI was extracted from an <EMBED/> element.

#### 2.2.4.4 ThreadData

An object that is used to store information about URIs that are currently being processed.

```
<xs:complexType name="ThreadData">
  <xs:sequence>
    <xs:element minOccurs="0" name="Age" type="xs:dateTime"/>
    <xs:element minOccurs="0" name="ThreadId" type="xs:int"/>
    <xs:element minOccurs="0" name="Uri" nillable="true" type="xs:string"/>
  </xs:sequence>
</xs:complexType>
```

```

    </xs:sequence>
</xs:complexType>

```

**Age:** A **DateTime** that specifies the time the thread started processing the URI.

**ThreadId:** An **Integer** that specifies the identifier of the thread processing the URI.

**Uri:** A **string** that specifies the URI that the thread is currently processing.

#### 2.2.4.5 ArrayOfThreadData

An array of type **ThreadData**, as specified in section [2.2.4.4](#), that are used in messages within the protocol.

```

<xs:complexType name="ArrayOfThreadData">
  <xs:sequence>
    <xs:element minOccurs="0" maxOccurs="unbounded" name="ThreadData"
      nillable="true" type="tns:ThreadData"/>
  </xs:sequence>
</xs:complexType>

```

**ThreadData:** A **ThreadData** structure as specified in section [2.2.4.4](#).

#### 2.2.4.6 ContinuousVariable

This stores historic state information about values.

```

<xs:complexType name="ContinuousVariable">
  <xs:sequence>
    <xs:element minOccurs="0" name="Average" type="xs:float"/>
    <xs:element minOccurs="0" name="Count" type="xs:long"/>
    <xs:element minOccurs="0" name="Max" type="xs:long"/>
    <xs:element minOccurs="0" name="Min" type="xs:long"/>
    <xs:element minOccurs="0" name="Value" type="xs:long"/>
  </xs:sequence>
</xs:complexType>

```

**Average:** A **Float** that specifies the average of all values that are stored.

**Count:** A **Long** that specifies the number of stored values.

**Max:** A **Long** that specifies the maximum value.

**Min:** A **Long** that specifies the minimum value.

**Value:** A **Long** that specifies the sum of all values.

#### 2.2.4.7 ExtractorStat

This stores statistic information about a link extractor.

```

<xs:complexType name="ExtractorStat">
  <xs:sequence>
    <xs:element minOccurs="0" name="LinkCount" type="xs:long"/>
  </xs:sequence>
</xs:complexType>

```

```

    <xs:element minOccurs="0" name="Name" nillable="true" type="xs:string"/>
    <xs:element minOccurs="0" name="Time" nillable="true"
      type="tns:ContinuousVariable"/>
  </xs:sequence>
</xs:complexType>

```

**LinkCount:** A **Long** that specifies the number of links that were extracted by this link extractor.

**Name:** A **string** that specifies the name of the link extractor.

**Time:** A **ContinuousVariable** structure, as specified in section [2.2.4.6](#), that represents the number of seconds that were spent in the link extractor.

#### 2.2.4.8 ArrayOfExtractorStat

An array of **ExtractorStat** elements as specified in section [2.2.4.7](#) that are used in protocol messages.

```

<xs:complexType name="ArrayOfExtractorStat">
  <xs:sequence>
    <xs:element minOccurs="0" maxOccurs="unbounded" name="ExtractorStat"
      nillable="true" type="tns:ExtractorStat"/>
  </xs:sequence>
</xs:complexType>

```

**ExtractorStat:** An **ExtractorStat** structure as specified in section [2.2.4.7](#).

#### 2.2.4.9 BEStatistics

This stores statistical information about the protocol server.

```

<xs:complexType name="BEStatistics">
  <xs:sequence>
    <xs:element minOccurs="0" name="CacheBytes" type="xs:long"/>
    <xs:element minOccurs="0" name="CacheHits" type="xs:long"/>
    <xs:element minOccurs="0" name="CacheInserts" type="xs:long"/>
    <xs:element minOccurs="0" name="CacheMisses" type="xs:long"/>
    <xs:element minOccurs="0" name="CacheSize" type="xs:long"/>
    <xs:element minOccurs="0" name="DownloadRequests" type="xs:long"/>
    <xs:element minOccurs="0" name="DownloadTimeAverage" type="xs:float"/>
    <xs:element minOccurs="0" name="DownloadTimeCount" type="xs:long"/>
    <xs:element minOccurs="0" name="DownloadTimeMax" type="xs:long"/>
    <xs:element minOccurs="0" name="DownloadTimeMin" type="xs:long"/>
    <xs:element minOccurs="0" name="DownloadTimeTotal" type="xs:long"/>
    <xs:element minOccurs="0" name="FailedRequests" type="xs:long"/>
    <xs:element minOccurs="0" name="ProcessTimeAverage" type="xs:float"/>
    <xs:element minOccurs="0" name="ProcessTimeCount" type="xs:long"/>
    <xs:element minOccurs="0" name="ProcessTimeMax" type="xs:long"/>
    <xs:element minOccurs="0" name="ProcessTimeMin" type="xs:long"/>
    <xs:element minOccurs="0" name="ProcessTimeTotal" type="xs:long"/>
    <xs:element minOccurs="0" name="ProcessedRequests" type="xs:long"/>
    <xs:element minOccurs="0" name="TimedOutRequests" type="xs:long"/>
  </xs:sequence>
</xs:complexType>

```

**CacheBytes:** A **Long** that specifies the total number of bytes used by the cache.

**CacheHits:** A **Long** that specifies the number of cache hits.

**CacheInserts:** A **Long** that specifies the number of cache inserts.

**CacheMisses:** A **Long** that specifies the number of cache misses.

**CacheSize:** A **Long** that specifies the number of documents in the cache.

**DownloadRequests:** A **Long** that specifies the number of download requests.

**DownloadTimeAverage:** A **Float** that specifies the average time, in seconds, spent downloading documents.

**DownloadTimeCount:** A **Long** that specifies the number of documents downloaded.

**DownloadTimeMax:** A **Long** that specifies the maximum time, in seconds, spent downloading a single document.

**DownloadTimeMin:** A **Long** that specifies the minimum time, in seconds, spent downloading a single document.

**DownloadTimeTotal:** A **Long** that specifies the accumulated time, in seconds, spent downloading documents.

**FailedRequests:** A **Long** that specifies the number of failed requests.

**ProcessTimeAverage:** A **Float** that specifies the average time, in seconds, spent processing documents.

**ProcessTimeCount:** A **Long** that specifies the number of documents processed.

**ProcessTimeMax:** A **Long** that specifies the maximum time, in seconds, spent processing a single document.

**ProcessTimeMin:** A **Long** that specifies the minimum time, in seconds, spent processing a single document.

**ProcessTimeTotal:** A **Long** that specifies the accumulated time, in seconds, spent processing documents.

**ProcessedRequests:** A **Long** that specifies the number of processed requests.

**TimedOutRequests:** A **Long** that specifies the number of timed out requests.

#### 2.2.4.10 PipelineStat

This stores status information about a pipeline.

```
<xs:complexType name="PipelineStat">
  <xs:sequence>
    <xs:element minOccurs="0" name="ExtractorStat" nillable="true"
      type="tns:ArrayOfExtractorStat"/>
    <xs:element minOccurs="0" name="Name" nillable="true" type="xs:string"/>
  </xs:sequence>
</xs:complexType>
```



**ExtractorStat:** A list of **ExtractorStat** objects for the pipeline as specified in section [2.2.4.7](#).

**Name:** A **string** that specifies the name of the pipeline.

#### 2.2.4.11 ArrayOfPipelineStat

An array of **PipelineStat** elements, as specified in section [2.2.4.10](#).

```
<xs:complexType name="ArrayOfPipelineStat">
  <xs:sequence>
    <xs:element minOccurs="0" maxOccurs="unbounded" name="PipelineStat"
      nillable="true" type="tns:PipelineStat"/>
  </xs:sequence>
</xs:complexType>
```

**PipelineStat:** A **PipelineStat** structure as specified in section [2.2.4.10](#).

#### 2.2.4.12 ResultSet

An object that the protocol server returns on successful completion of the **Process** operation. See section [3.1.4.1](#) for more information about the **Process** operation.

```
<xs:complexType name="ResultSet">
  <xs:sequence>
    <xs:element minOccurs="0" name="Checksum" nillable="true" type="xs:string"/>
    <xs:element minOccurs="0" name="Cookies" nillable="true"
      type="ql:ArrayOfstring"/>
    <xs:element minOccurs="0" name="Flags" type="xs:unsignedInt"/>
    <xs:element minOccurs="0" name="HTML" nillable="true" type="xs:base64Binary"/>
    <xs:element minOccurs="0" name="HTMLEncoding" nillable="true"
      type="xs:string"/>
    <xs:element minOccurs="0" name="Links" nillable="true" type="tns:ArrayOfLink"/>
    <xs:element minOccurs="0" name="Thumbnail" nillable="true"
      type="xs:base64Binary"/>
    <xs:element minOccurs="0" name="ThumbnailFormat" nillable="true"
      type="xs:string"/>
  </xs:sequence>
</xs:complexType>
```

**Checksum:** A 32-byte **hex-encoded string** that specifies a unique fingerprint of the Web document.

**Cookies:** An array of **strings** that specify the HTTP cookies of the document in the following format.

NAME "=" VALUE

**Flags:** An unsigned integer bit map that represents which flags are set for a document. The bit map values are specified in the following table:

Bit value	Description
0x1	Document contains a META element that has a <b>name</b> attribute of "robots" and a

Bit value	Description
	<b>content</b> attribute value of "noindex", as specified in <a href="#">[HTML]</a>
0x2	Document contains a META element that has a <b>name</b> attribute of "robots" and a <b>content</b> attribute value of "nofollow", as specified in <a href="#">[HTML]</a>

**HTML:** A base 64 encoded byte array specifying the resulting HTML document.

**HTMLEncoding:** A **string** that specifies the character encoding of the HTML.

**Links:** An array of **Link** structures that specify any extracted URIs.

**Thumbnail:** The value of this parameter MUST be NULL.

**ThumbnailFormat:** The value of this parameter MUST be NULL.

#### 2.2.4.13 Status

An object that the protocol server returns on successful completion of the **GetStatus** operation. See section [3.2.4.1](#) for more information about the **GetStatus** operation.

```
<xs:complexType name="Status">
  <xs:sequence>
    <xs:element minOccurs="0" name="threadStatusList" nillable="true"
      type="tns:ArrayOfThreadData"/>
  </xs:sequence>
</xs:complexType>
```

**threadStatusList:** An array of **ThreadData** structures, as specified in section [2.2.4.4](#), that specify the status for all threads.

#### 2.2.4.14 Statistics

An object that the protocol server returns on successful completion of the **GetStatistics** operation. See section [2.2.4.2](#) for more information about the **GetStatistics** operation.

```
<xs:complexType name="Statistics">
  <xs:sequence>
    <xs:element minOccurs="0" name="BEStats" nillable="true"
      type="tns:BEStatistics"/>
    <xs:element minOccurs="0" name="PipelineStatList" nillable="true"
      type="tns:ArrayOfPipelineStat"/>
  </xs:sequence>
</xs:complexType>
```

**BEStats:** A **BEStatistics** structure for the protocol server, as specified in section [2.2.4.9](#).

**PipelineStatList:** An array of **PipelineStat** structures for the protocol server, as specified in section [2.2.4.10](#).

### 2.2.5 Simple Types

All strings, unless otherwise specified, MUST be encoded in UTF-8.

### **2.2.6 Attributes**

None.

### **2.2.7 Groups**

None.

### **2.2.8 Attribute Groups**

None.

## 3 Protocol Details

The client side of this protocol is simply a pass-through. That is, no additional timers or other state is required on the client side of this protocol. Calls made by the higher-layer protocol or application are passed directly to the transport, and the results returned by the transport are passed directly back to the higher-layer protocol or application.

### 3.1 IBEServer Server Details

The Processing Web service is used for processing Web documents on the protocol server.

#### 3.1.1 Abstract Data Model

This section describes a conceptual model of possible data organization that an implementation maintains to participate in this protocol. The described organization is provided to facilitate the explanation of how the protocol behaves. This document does not mandate that implementations adhere to this model as long as their external behavior is consistent with that described in this document.

**Cache:** The protocol server maintains a limited cache of recently downloaded dependencies, which optimizes the use of download processes. When inserting elements into the cache, the protocol server updates corresponding cache statistics to keep them current, as specified in section [2.2.4.9](#). If a cache is not implemented these values **MUST** be set to 0.

#### 3.1.2 Timers

None.

#### 3.1.3 Initialization

The Processing Web service within the protocol server **MUST** begin listening for requests at the respective URI addresses that are in the message transport, as specified in section [2.1](#).

#### 3.1.4 Message Processing Events and Sequencing Rules

The following table summarizes the list of **WSDL** operations that are defined for the Processing Web service.

Operation	Description
<b>Process</b>	Processes a given Web document.

##### 3.1.4.1 Process

This method processes a specified Web document.

```
<wsdl:operation name="Process">
  <wsdl:input
    wsaw:Action="http://Microsoft.SharePoint.Search.Extended.BrowserEngine.Server/IBEServer/Process"
    message="tns:IBEServer_Process_InputMessage"/>
  <wsdl:output
    wsaw:Action="http://Microsoft.SharePoint.Search.Extended.BrowserEngine.Server/IBEServer/ProcessResponse"
    message="tns:IBEServer_Process_OutputMessage"/>
  <wsdl:fault
    wsaw:Action="http://Microsoft.SharePoint.Search.Extended.BrowserEngine.Server/IBEServer/ProcessFault"/>
</wsdl:operation>
```

```

ssProcessingFaultFault" name="ProcessingFaultFault"
message="tns:IBEServer_Process_ProcessingFaultFault_FaultMessage"/>
</wsdl:operation>

```

The protocol client sends a **IBEServer\_Process\_InputMessage** message. If the operation succeeds, the protocol server responds with a **IBEServer\_Process\_OutputMessage** message. If the operation fails, the protocol server responds with a **IBEServer\_Process\_ProcessingFaultFault\_FaultMessage** message.

### 3.1.4.1.1 Messages

The following WSDL message definitions are specific to this operation.

#### 3.1.4.1.1.1 IBEServer\_Process\_InputMessage

This is the request to initiate the operation that processes a Web document.

The **SOAP action** value is:

```
http://Microsoft.SharePoint.Search.Extended.BrowserEngine.Server/IBEServer/Process
```

The **SOAP body** contains a **Process** element, as specified in section [3.1.4.1.2.1](#).

#### 3.1.4.1.1.2 IBEServer\_Process\_OutputMessage

This is the response message for a **Process** method.

The SOAP action value is:

```
http://Microsoft.SharePoint.Search.Extended.BrowserEngine.Server/IBEServer/ProcessResponse
```

The SOAP body contains a **ProcessResponse** element, as specified in section [3.2.4.1.2.2](#).

#### 3.1.4.1.1.3 IBEServer\_Process\_ProcessingFaultFault\_FaultMessage

This is the SOAP fault message for a **Process** method.

The SOAP action value is:

```
http://Microsoft.SharePoint.Search.Extended.BrowserEngine.Server/IBEServer/ProcessProcessingFaultFault
```

The SOAP body contains a **ProcessingFault** element, as specified in section [3.1.4.1.2.3](#).

### 3.1.4.1.2 Elements

The following XML Schema element definitions are specific to this operation.

#### 3.1.4.1.2.1 Process

This is the input data for a Process WSDL operation.

```

<xs:element name="Process">
  <xs:complexType>
    <xs:sequence>
      <xs:element minOccurs="0" name="uri" nillable="true" type="xs:string"/>
      <xs:element minOccurs="0" name="proxyHost" nillable="true" type="xs:string"/>
      <xs:element minOccurs="0" name="proxyPort" type="xs:unsignedShort"/>
      <xs:element minOccurs="0" name="proxyHeaders" nillable="true"
        type="xs:string"/>
    </xs:sequence>
  </xs:complexType>
</xs:element>

```

**Uri:** A **string** that contains the URI of the document to be processed.

**proxyHost:** A **string** that specifies the **host name** of an **HTTP proxy** from which the URI of the document and its dependencies can be downloaded. If the **string** is empty or NULL, the protocol server uses the protocol client as the proxy host name.

**proxyPort:** An unsigned **Short** that specifies the port number of the HTTP proxy that is specified in **proxyHost**. If the proxy port is 0, the protocol server retrieves the URI and any dependencies directly from the Web servers, regardless of the specified **proxyHost**.

**proxyHeaders:** A **string** that specifies additional HTTP headers (as specified in [RFC2616](#)) to include in the **HTTP GET** request for the URI. In all subsequent requests for the document or its dependencies, the protocol server sends specified **proxyHeaders** to the proxy that is specified in **proxyHost**.

### 3.1.4.1.2.2 ProcessResponse

This is the output data for a Process WSDL operation.

```

<xs:element name="ProcessResponse">
  <xs:complexType>
    <xs:sequence>
      <xs:element minOccurs="0" name="ProcessResult" nillable="true" type="ql:ResultSet"/>
    </xs:sequence>
  </xs:complexType>
</xs:element>

```

**ProcessResult:** The method MUST return this element when it finishes successfully. The syntax of the **ResultSet** type is specified in section [2.2.4.12](#).

### 3.1.4.1.2.3 ProcessingFault

This is the output data for a Process WSDL operation.

```

<xs:element name="ProcessingFault" nillable="true" type="tns:ProcessingFault"/>

```

**ProcessingFault:** The method MUST return this element when it does not finish successfully. The syntax of the **ProcessingFault** type is specified in section [2.2.4.2](#).

### 3.1.4.1.3 Complex Types

None.

#### 3.1.4.1.4 Simple Types

None.

#### 3.1.4.1.5 Attributes

None.

#### 3.1.4.1.6 Groups

None.

#### 3.1.4.1.7 Attribute Groups

None.

### 3.1.5 Timer Events

None.

### 3.1.6 Other Local Events

None.

## 3.2 IStatServer Server Details

The Status and Monitoring Web service queries the protocol server about status and statistics.

### 3.2.1 Abstract Data Model

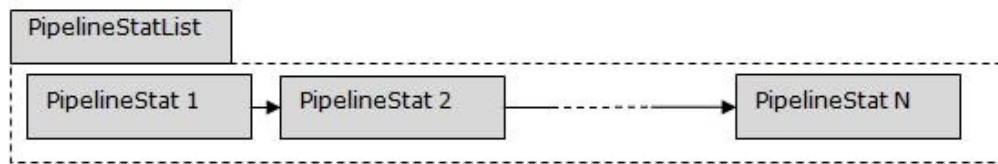
This section describes a conceptual model of possible data organization that an implementation maintains to participate in this protocol. The described organization is provided to facilitate the explanation of how the protocol behaves. This document does not mandate that implementations adhere to this model as long as their external behavior is consistent with that described in this document.

#### 3.2.1.1 Statistics

The protocol server **MUST** maintain a set of statistics in memory to respond to the protocol client **GetStatistics** request. The values to maintain are specified in section [2.2.4.14](#).

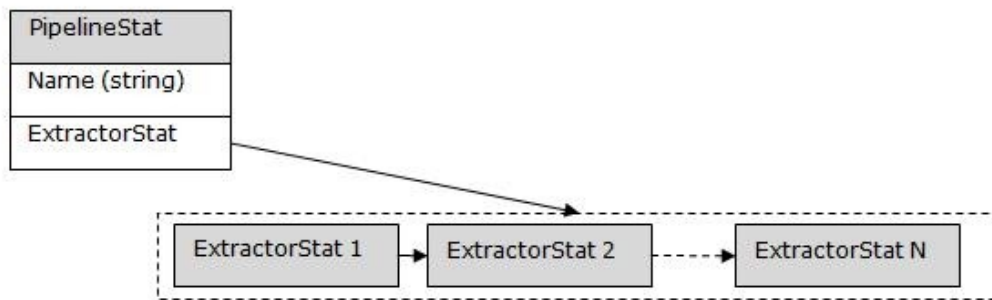
The protocol server has pipelines of link extractors that process the resulting DOM structure after each document is processed. Statistics are aggregated for each of the pipelines and link extractors. The protocol server maintains the statistics in memory; whenever the protocol server is restarted, any existing statistics are reset.

The protocol server maintains a list of **PipelineStat** objects for each of the available pipelines that contains statistics about each individual pipeline.



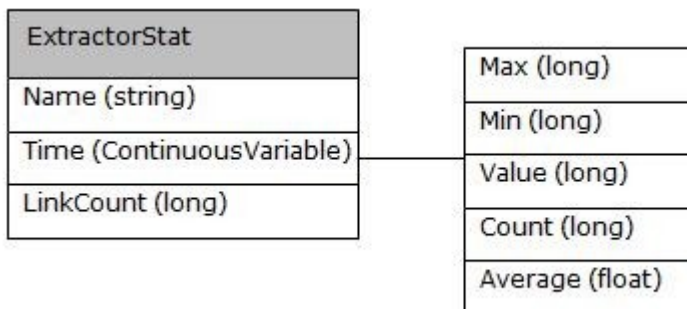
**Figure 3: List of PipelineStat objects**

Each pipeline contains a set of link extractors. The protocol server maintains a **PipelineStat** object for each of the pipelines. Within the **PipelineStat** object, information about the individual link extractors is maintained in a list of **ExtractorStat** objects.



**Figure 4: Details of the PipelineStat object**

An **ExtractorStat** object maintains statistics for each of the link extractors in a pipeline



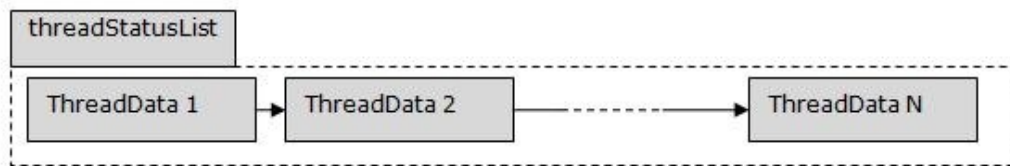
**Figure 5: Details of the ExtractorStat object**

### 3.2.1.2 Status

The protocol server maintains information about the documents that are currently being processed, as requested by the protocol client with the **GetStatus** request. The values to maintain are specified in section [2.2.4.13](#).

The protocol server has a pool of threads. Each thread serves a single **Process** request at a time. The protocol server maintains a list of **ThreadData** objects for the available threads.





**Figure 6: List of ThreadData objects**

Information about individual threads is maintained in a **ThreadData** object.

ThreadData
ThreadId (long)
Uri (string)
Age (DateTime)

**Figure 7: Detail of the ThreadData object**

### 3.2.2 Timers

None.

### 3.2.3 Initialization

The Status and Monitoring Web service within the protocol server **MUST** begin listening for requests at the respective URI addresses that are in the message transport, as specified in section [2.1](#).

### 3.2.4 Message Processing Events and Sequencing Rules

The following table summarizes the list of WSDL operations that are defined in this specification.

Operation	Description
<b>GetStatus</b>	Returns status information about the protocol server.
<b>GetStatistics</b>	Returns statistics information about the protocol server.
<b>Ping</b>	Queries the protocol server for responsiveness.

#### 3.2.4.1 GetStatus

This method queries the protocol server for status information.

```

<wsdl:operation name="GetStatus">
  <wsdl:input
    wsaw:Action="http://Microsoft.SharePoint.Search.Extended.BrowserEngine.Server/IStatServer/Get
    Status" message="tns:IStatServer_GetStatus_InputMessage"/>

```

```
<wsdl:output
wsaw:Action="http://Microsoft.SharePoint.Search.Extended.BrowserEngine.Server/IStatServer/Get
StatusResponse" message="tns:IStatServer_GetStatus_OutputMessage"/>
</wsdl:operation>
```

The protocol client sends a **IStatServer\_GetStatus\_InputMessage** request message as specified in section [3.2.4.2.1.1](#) and the protocol server responds with a **IStatServer\_GetStatus\_OutputMessage** response message as specified in section [3.2.4.1.1.2](#).

### 3.2.4.1.1 Messages

The following WSDL message definitions are specific to this operation.

#### 3.2.4.1.1.1 IStatServer\_GetStatus\_InputMessage

This is the request to initiate the operation that queries for status information.

The SOAP action value is:

```
http://Microsoft.SharePoint.Search.Extended.BrowserEngine.Server/IStatServer/GetStatus
```

The SOAP body contains a **GetStatus** element.

#### 3.2.4.1.1.2 IStatServer\_GetStatus\_OutputMessage

This is the response message for a **GetStatus** method.

The SOAP action value is:

```
http://Microsoft.SharePoint.Search.Extended.BrowserEngine.Server/IStatServer/GetStatusRespons
e
```

The SOAP body contains a **GetStatusResponse** element as specified in section [3.2.4.1.2.2](#).

### 3.2.4.1.2 Elements

The following XML Schema element definitions are specific to this operation.

#### 3.2.4.1.2.1 GetStatus

The input data for a GetStatus WSDL operation.

```
<xs:element name="GetStatus">
  <xs:complexType>
    <xs:sequence/>
  </xs:complexType>
</xs:element>
```

There are no parameters.

### 3.2.4.1.2.2 GetStatusResponse

This is the output data for a GetStatus WSDL operation.

```
<xs:element name="GetStatusResponse">
  <xs:complexType>
    <xs:sequence>
      <xs:element minOccurs="0" name="GetStatusResult" nillable="true" type="q1:Status"/>
    </xs:sequence>
  </xs:complexType>
</xs:element>
```

**GetStatusResult:** The method MUST return this element when it finishes successfully. The syntax of the **Status** type is specified in section [2.2.4.13](#).

### 3.2.4.1.3 Complex Types

None.

### 3.2.4.1.4 Simple Types

None.

### 3.2.4.1.5 Attributes

None.

### 3.2.4.1.6 Groups

None.

### 3.2.4.1.7 Attribute Groups

None.

## 3.2.4.2 GetStatistics

This method queries the protocol server for statistics information.

```
<wsdl:operation name="GetStatistics">
  <wsdl:input
    wsaw:Action="http://Microsoft.SharePoint.Search.Extended.BrowserEngine.Server/IStatServer/GetStatistics" message="tns:IStatServer_GetStatistics_InputMessage"/>
  <wsdl:output
    wsaw:Action="http://Microsoft.SharePoint.Search.Extended.BrowserEngine.Server/IStatServer/GetStatisticsResponse" message="tns:IStatServer_GetStatistics_OutputMessage"/>
</wsdl:operation>
```

The protocol client sends a **IStatServer\_GetStatistics\_InputMessage** request message as specified in section [3.2.4.1.1.1](#) and the protocol server responds with a **IStatServer\_GetStatistics\_OutputMessage** response message as specified in section [3.2.4.2.1.2](#).

### 3.2.4.2.1 Messages

The following WSDL message definitions are specific to this operation.

#### 3.2.4.2.1.1 IStatServer\_GetStatistics\_InputMessage

This is the request to initiate the operation that queries the protocol server for statistics information.

The SOAP action value is:

```
http://Microsoft.SharePoint.Search.Extended.BrowserEngine.Server/IStatServer/GetStatistics
```

The SOAP body contains a **GetStatistics** element as specified in section [3.2.4.2](#).

#### 3.2.4.2.1.2 IStatServer\_GetStatistics\_OutputMessage

This is the response message for a **GetStatistics** method.

The SOAP action value is:

```
http://Microsoft.SharePoint.Search.Extended.BrowserEngine.Server/IStatServer/GetStatisticsResponse
```

The SOAP body contains a **GetStatisticsResponse** element, as specified in section [3.2.4.2.2.2](#)).

### 3.2.4.2.2 Elements

The following XML Schema element definitions are specific to this operation.

#### 3.2.4.2.2.1 GetStatistics

The input data for a GetStatistics WSDL operation.

```
<xs:element name="GetStatistics">
  <xs:complexType>
    <xs:sequence/>
  </xs:complexType>
</xs:element>
```

There are no parameters.

#### 3.2.4.2.2.2 GetStatisticsResponse

```
<xs:element name="GetStatisticsResponse">
  <xs:complexType>
    <xs:sequence>
      <xs:element minOccurs="0" name="GetStatisticsResult" nillable="true"
type="q2:Statistics"/>
    </xs:sequence>
  </xs:complexType>
</xs:element>
```

**GetStatisticsResult:** The method MUST return this element when it finishes successfully. The syntax of the **Statistics** type is specified in section [2.2.4.14](#).

#### 3.2.4.2.3 Complex Types

None.

#### 3.2.4.2.4 Simple Types

None.

#### 3.2.4.2.5 Attributes

None.

#### 3.2.4.2.6 Groups

None.

#### 3.2.4.2.7 Attribute Groups

None.

### 3.2.4.3 Ping

This method queries the protocol service to verify whether it is running.

```
<wsdl:operation name="Ping">
  <wsdl:input
    wsaw:Action="http://Microsoft.SharePoint.Search.Extended.BrowserEngine.Server/IStatServer/Ping"
    message="tns:IStatServer_Ping_InputMessage"/>
  <wsdl:output
    wsaw:Action="http://Microsoft.SharePoint.Search.Extended.BrowserEngine.Server/IStatServer/PingResponse"
    message="tns:IStatServer_Ping_OutputMessage"/>
</wsdl:operation>
```

The protocol client sends a **IStatServer\_Ping\_InputMessage** request message, as specified in section [3.2.4.3.1.1](#), and the protocol server responds with a **IStatServer\_Ping\_OutputMessage** response message, as specified in section [3.2.4.3.1.2](#).

#### 3.2.4.3.1 Messages

The WSDL messages defined in this section are specific to this operation.

##### 3.2.4.3.1.1 IStatServer\_Ping\_InputMessage

This is the request to initiate the operation that verifies whether the protocol server is running.

The SOAP action is:

```
http://Microsoft.SharePoint.Search.Extended.BrowserEngine.Server/IstatServer/Ping
```

The SOAP body contains a **Ping** element, as specified in section [3.2.4.3.3.1](#).

### 3.2.4.3.1.2 IStatServer\_Ping\_OutputMessage

This is the response message for a **Ping** method.

The SOAP action is:

```
http://Microsoft.SharePoint.Search.Extended.BrowserEngine.Server/IStatServer/PingResponse
```

The SOAP body contains a **PingResponse** element, as specified in section [3.2.4.3.3.2](#).

### 3.2.4.3.2 Element

The following XML Schema element definitions are specific to this operation.

### 3.2.4.3.3 Elements

#### 3.2.4.3.3.1 Ping

The input data for a Ping WSDL operation.

```
<xs:element name="Ping">
  <xs:complexType>
    <xs:sequence/>
  </xs:complexType>
</xs:element>
```

There are no parameters.

#### 3.2.4.3.3.2 PingResponse

The output data for a Ping WSDL operation.

```
<xs:element name="PingResponse">
  <xs:complexType>
    <xs:sequence>
      <xs:element minOccurs="0" name="PingResult" nillable="true" type="xs:string"/>
    </xs:sequence>
  </xs:complexType>
</xs:element>
```

**PingResult:** The method MUST return a value of "pong" when the method finishes successfully.

### 3.2.4.3.4 Complex Types

None.

### 3.2.4.3.5 Simple Types

None.

### 3.2.4.3.6 Attributes

None.

### **3.2.4.3.7 Groups**

None.

### **3.2.4.3.8 Attribute Groups**

None.

### **3.2.5 Timer Events**

None.

### **3.2.6 Other Local Events**

None.

## 4 Protocol Examples

### 4.1 Process

This section contains a **Process** call as described in section 3.1.4.1. The protocol client sends a request to the protocol server to process the URI that contains a value of "http://www.contoso.com/exampleURIA.html". The protocol server downloads the URI and evaluates the ECMAScript and events. Then it sends the resulting HTML document and its extracted forward links to the protocol client.

Formatting has been added to this section to improve the readability of the examples.

#### 4.1.1 Example HTML document

The HTML document associated with by the URI.

```
<HTML>
<HEAD>
<TITLE> Www.contoso.com title </TITLE>
<SCRIPT LANGUAGE="JAVASCRIPT">
var site = "http://www.contoso.com/"

function test(){
    document.writeln(
        "<A HREF=\"http://www.contoso.com/exampleURIB.html\"> Example URI B </A>");
    document.title = "New www.contoso.com title version 2.0";
}

</SCRIPT>

</HEAD>
<BODY>
<CENTER>
<SCRIPT LANGUAGE="JAVASCRIPT"> test() </SCRIPT>

<A HREF="http://www.contoso.com/exampleURIC.html"> Example URI C </A>
</BODY>
</HTML>
```

#### 4.1.2 Request

The protocol client requests the URI to be processed.

```
POST /BrowserEngine/http HTTP/1.1Content-Type: application/soap+xml; charset=utf-8Host:
serverURI:processPortContent-Length: 838
Expect: 100-continueConnection: Keep-Alive
HTTP/1.1 100 Continue
<s:Envelope xmlns:s="http://www.w3.org/2003/05/soap-envelope"
xmlns:a="http://www.w3.org/2005/08/addressing">
  <s:Header>
    <a:Action
s:mustUnderstand="1">http://Microsoft.SharePoint.Search.Extended.BrowserEngine.Server/IBEServ
er/Process</a:Action>
    <a:MessageID>urn:uuid:c9e74c80-7e91-4842-ac11-0fa149de60c1</a:MessageID>
    <a:ReplyTo>
      <a:Address>http://www.w3.org/2005/08/addressing/anonymous</a:Address>
```



```

    </a:ReplyTo>
    <a:To s:mustUnderstand="1">http://serverURI:processPort/BrowserEngine/http</a:To>
  </s:Header>
  <s:Body>
    <Process xmlns="http://Microsoft.SharePoint.Search.Extended.BrowserEngine.Server">
      <uri>http://www.contoso.com/exampleURIA.html</uri>
      <proxyHost i:nil="true" xmlns:i="http://www.w3.org/2001/XMLSchema-instance"/>
      <proxyPort>0</proxyPort>
      <proxyHeaders i:nil="true" xmlns:i="http://www.w3.org/2001/XMLSchema-instance"/>
    </Process>
  </s:Body>
</s:Envelope>

```

### 4.1.3 Response

The protocol server responds with the results after processing the URI.

```

HTTP/1.1 200 OKContent-Length: 1550
Content-Type: application/soap+xml; charset=utf-8
Server: Microsoft-HTTPAPI/2.0
Date: Mon, 16 Feb 2009 11:53:33 GMT
<s:Envelope xmlns:s="http://www.w3.org/2003/05/soap-envelope"
xmlns:a="http://www.w3.org/2005/08/addressing">
  <s:Header>
    <a:Action
s:mustUnderstand="1">http://Microsoft.SharePoint.Search.Extended.BrowserEngine.Server/IBEServ
er/ProcessResponse</a:Action>
    <a:RelatesTo>urn:uuid:c9e74c80-7e91-4842-ac11-0fa149de60c1</a:RelatesTo>
  </s:Header>
  <s:Body>
    <ProcessResponse
xmlns="http://Microsoft.SharePoint.Search.Extended.BrowserEngine.Server">
      <ProcessResult
xmlns:b="http://schemas.datacontract.org/2004/07/Microsoft.SharePoint.Search.Extended.Browser
Engine.Util" xmlns:i="http://www.w3.org/2001/XMLSchema-instance">
        <b:Checksum>00a04e3e318d3ce369517f5969de1927</b:Checksum>
        <b:Cookies xmlns:c="http://schemas.microsoft.com/2003/10/Serialization/Arrays"/>
        <b:Flags>0</b:Flags>
        <b:HTML>
PEhUTUw+PEhFQUQ+PFRJVExFPk5ldyB3d3cuY29udG9zby5jb20gdG10bGUgdmVyc2lvbiAyLjA8L1RJVExFPg0KDQoNC
jxNRVRBIGNvbnRlbnQ9InRleHQvaHRtbDsgY2hhcnNldD1VVEYtOCIGaHR0cC1lcXVpdj0iQ29udGVudC1UeXB1Ij48L0
hFQUQ+DQo8Qk9EWT4NCjxDRU5URVI+DQoNCjxBIGhy\nZWY9Imh0dHA6Ly93d3cuY29udG9zby5jb20vZXhhbXBsZVVSS
UIuaHRtbCI+RXhhbXBsZSBVUkkGQiA8L0E+PEEGaHJlZj0iaHR0cDovL3d3dy5jb250b3NvLmNvbS9leGFtcGxlVVJJQy
5odGlsIj5F\neGFtcGxlIFVSSSBDIDwvQT48L0NFTlRFUj48L0JPRFk+PC9IVE1MPg==
        </b:HTML>
        <b:HTMLEncoding>UTF-8</b:HTMLEncoding>
        <b:Links>
          <b:Link>
            <b:Origin>A</b:Origin>
            <b:Uri>http://www.contoso.com/exampleURIB.html</b:Uri>
          </b:Link>
          <b:Link>
            <b:Origin>A</b:Origin>
            <b:Uri>http://www.contoso.com/exampleURIC.html</b:Uri>
          </b:Link>
        </b:Links>
        <b:Thumbnail i:nil="true"/>
        <b:ThumbnailFormat i:nil="true"/>

```

```
</ProcessResult>
</ProcessResponse>
</s:Body>
</s:Envelope>
```

#### 4.1.4 Base64 decoded HTML document

The resulting HTML document decoded.

```
<HTML>
<HEAD>
<TITLE>New www.contoso.com title version 2.0</TITLE>
<META content="text/html; charset=UTF-8" http-equiv="Content-Type">
</HEAD>
<BODY>
<CENTER>
<A href="http://www.contoso.com/exampleURIB.html">Example URI B </A>
<A href="http://www.contoso.com/exampleURIC.html">Example URI C </A>
</CENTER>
</BODY>
</HTML>
```

## **5 Security**

### **5.1 Security Considerations for Implementers**

None.

### **5.2 Index of Security Parameters**

None.

## 6 Appendix A: Full WSDL

For ease of implementation, the full WSDL is provided in the following section.

### 6.1 Processing Web service WSDL

```
<?xml version="1.0" encoding="utf-8"?>
<wsdl:definitions name="BEServer" targetNamespace="http://tempuri.org/"
    xmlns:wsdl="http://schemas.xmlsoap.org/wsdl/"
    xmlns:wsa10="http://www.w3.org/2005/08/addressing"
    xmlns:wsx="http://schemas.xmlsoap.org/ws/2004/09/mex"
    xmlns:soap12="http://schemas.xmlsoap.org/wsdl/soap12/"
    xmlns:wsu="http://docs.oasis-open.org/wss/2004/01/oasis-200401-wss-wssecurity-utility-
1.0.xsd"
    xmlns:wsp="http://schemas.xmlsoap.org/ws/2004/09/policy"
    xmlns:wsap="http://schemas.xmlsoap.org/ws/2004/08/addressing/policy"
    xmlns:msec="http://schemas.microsoft.com/ws/2005/12/wsdl/contract"
    xmlns:wsa="http://schemas.xmlsoap.org/ws/2004/08/addressing"
    xmlns:wsam="http://www.w3.org/2007/05/addressing/metadata"
    xmlns:wsaw="http://www.w3.org/2006/05/addressing/wsdl"
    xmlns:tns="http://tempuri.org/"
    xmlns:soap="http://schemas.xmlsoap.org/wsdl/soap/"
    xmlns:i0="http://Microsoft.SharePoint.Search.Extended.BrowserEngine.Server"
    xmlns:xsd="http://www.w3.org/2001/XMLSchema"
    xmlns:soapenc="http://schemas.xmlsoap.org/soap/encoding/">
  <wsp:Policy wsu:Id="WSHttpBinding_IBEServer_policy">
    <wsp:ExactlyOne>
      <wsp>All>
        <sp:SymmetricBinding
          xmlns:sp="http://schemas.xmlsoap.org/ws/2005/07/securitypolicy">
          <wsp:Policy>
            <sp:ProtectionToken>
              <wsp:Policy>
                <sp:SecureConversationToken
                  sp:IncludeToken="http://schemas.xmlsoap.org/ws/2005/07/securitypolicy/IncludeToken/AlwaysToRe
cipient">
                  <wsp:Policy>
                    <sp:RequireDerivedKeys/>
                    <sp:BootstrapPolicy>
                      <wsp:Policy>
                        <sp:SignedParts>
                          <sp:Body/>
                          <sp:Header Name="To" Namespace="http://www.w3.org/2005/08/addressing"/>
                          <sp:Header Name="From" Namespace="http://www.w3.org/2005/08/addressing"/>
                          <sp:Header Name="FaultTo" Namespace="http://www.w3.org/2005/08/addressing"/>
                          <sp:Header Name="ReplyTo" Namespace="http://www.w3.org/2005/08/addressing"/>
                          <sp:Header Name="MessageID" Namespace="http://www.w3.org/2005/08/addressing"/>
                          <sp:Header Name="RelatesTo" Namespace="http://www.w3.org/2005/08/addressing"/>
                          <sp:Header Name="Action" Namespace="http://www.w3.org/2005/08/addressing"/>
                        </sp:SignedParts>
                        <sp:EncryptedParts>
                          <sp:Body/>
                        </sp:EncryptedParts>
                      </sp:SymmetricBinding>
                    <wsp:Policy>
                      <sp:ProtectionToken>
                        <wsp:Policy>
```

```

        <sp:SpnegoContextToken
sp:IncludeToken="http://schemas.xmlsoap.org/ws/2005/07/securitypolicy/IncludeToken/AlwaysToRe
cipient">
            <wsp:Policy>
                <sp:RequireDerivedKeys/>
            </wsp:Policy>
        </sp:SpnegoContextToken>
    </wsp:Policy>
</sp:ProtectionToken>
<sp:AlgorithmSuite>
    <wsp:Policy>
        <sp:Basic256/>
    </wsp:Policy>
</sp:AlgorithmSuite>
<sp:Layout>
    <wsp:Policy>
        <sp:Strict/>
    </wsp:Policy>
</sp:Layout>
<sp:IncludeTimestamp/>
<sp:EncryptSignature/>
<sp:OnlySignEntireHeadersAndBody/>
</wsp:Policy>
</sp:SymmetricBinding>
<sp:Wss11>
    <wsp:Policy>
        <sp:MustSupportRefKeyIdentifier/>
        <sp:MustSupportRefIssuerSerial/>
        <sp:MustSupportRefThumbprint/>
        <sp:MustSupportRefEncryptedKey/>
    </wsp:Policy>
</sp:Wss11>
<sp:Trust10>
    <wsp:Policy>
        <sp:MustSupportIssuedTokens/>
        <sp:RequireClientEntropy/>
        <sp:RequireServerEntropy/>
    </wsp:Policy>
</sp:Trust10>
</wsp:Policy>
</sp:BootstrapPolicy>
</wsp:Policy>
</sp:SecureConversationToken>
</wsp:Policy>
</sp:ProtectionToken>
<sp:AlgorithmSuite>
    <wsp:Policy>
        <sp:Basic256/>
    </wsp:Policy>
</sp:AlgorithmSuite>
<sp:Layout>
    <wsp:Policy>
        <sp:Strict/>
    </wsp:Policy>
</sp:Layout>
<sp:IncludeTimestamp/>
<sp:EncryptSignature/>
<sp:OnlySignEntireHeadersAndBody/>
</wsp:Policy>

```

```

</sp:SymmetricBinding>
<sp:Wss11
  xmlns:sp="http://schemas.xmlsoap.org/ws/2005/07/securitypolicy">
  <wsp:Policy>
    <sp:MustSupportRefKeyIdentifier/>
    <sp:MustSupportRefIssuerSerial/>
    <sp:MustSupportRefThumbprint/>
    <sp:MustSupportRefEncryptedKey/>
  </wsp:Policy>
</sp:Wss11>
<sp:Trust10 xmlns:sp="http://schemas.xmlsoap.org/ws/2005/07/securitypolicy">
  <wsp:Policy>
    <sp:MustSupportIssuedTokens/>
    <sp:RequireClientEntropy/>
    <sp:RequireServerEntropy/>
  </wsp:Policy>
</sp:Trust10>
<wsoma:OptimizedMimeSerialization

xmlns:wsoma="http://schemas.xmlsoap.org/ws/2004/09/policy/optimizedmimeserialization"/>
  <wsaw:UsingAddressing/>
</wsp:All>
</wsp:ExactlyOne>
</wsp:Policy>
<wsp:Policy
  wsu:Id="WSHttpBinding_IBEServer_Process_Input_policy">
  <wsp:ExactlyOne>
    <wsp:All>
      <sp:SignedParts
        xmlns:sp="http://schemas.xmlsoap.org/ws/2005/07/securitypolicy">
        <sp:Body/>
        <sp:Header Name="To" Namespace="http://www.w3.org/2005/08/addressing"/>
        <sp:Header Name="From" Namespace="http://www.w3.org/2005/08/addressing"/>
        <sp:Header Name="FaultTo" Namespace="http://www.w3.org/2005/08/addressing"/>
        <sp:Header Name="ReplyTo" Namespace="http://www.w3.org/2005/08/addressing"/>
        <sp:Header Name="MessageID" Namespace="http://www.w3.org/2005/08/addressing"/>
        <sp:Header Name="RelatesTo" Namespace="http://www.w3.org/2005/08/addressing"/>
        <sp:Header Name="Action" Namespace="http://www.w3.org/2005/08/addressing"/>
      </sp:SignedParts>
      <sp:EncryptedParts
        xmlns:sp="http://schemas.xmlsoap.org/ws/2005/07/securitypolicy">
        <sp:Body/>
      </sp:EncryptedParts>
    </wsp:All>
  </wsp:ExactlyOne>
</wsp:Policy>
<wsp:Policy wsu:Id="WSHttpBinding_IBEServer_Process_output_policy">
  <wsp:ExactlyOne>
    <wsp:All>
      <sp:SignedParts xmlns:sp="http://schemas.xmlsoap.org/ws/2005/07/securitypolicy">
        <sp:Body/>
        <sp:Header Name="To" Namespace="http://www.w3.org/2005/08/addressing"/>
        <sp:Header Name="From" Namespace="http://www.w3.org/2005/08/addressing"/>
        <sp:Header Name="FaultTo" Namespace="http://www.w3.org/2005/08/addressing"/>
        <sp:Header Name="ReplyTo" Namespace="http://www.w3.org/2005/08/addressing"/>
        <sp:Header Name="MessageID" Namespace="http://www.w3.org/2005/08/addressing"/>
        <sp:Header Name="RelatesTo" Namespace="http://www.w3.org/2005/08/addressing"/>
        <sp:Header Name="Action" Namespace="http://www.w3.org/2005/08/addressing"/>
      </sp:SignedParts>
    </wsp:All>
  </wsp:ExactlyOne>
</wsp:Policy>

```

```

    <sp:EncryptedParts xmlns:sp="http://schemas.xmlsoap.org/ws/2005/07/securitypolicy">
      <sp:Body/>
    </sp:EncryptedParts>
  </wsp:All>
</wsp:ExactlyOne>
</wsp:Policy>
<wsp:Policy wsu:Id="WSHttpBinding_IBEServer_Process_ProcessingFaultFault_Fault">
  <wsp:ExactlyOne>
    <wsp:All>
      <sp:SignedParts xmlns:sp="http://schemas.xmlsoap.org/ws/2005/07/securitypolicy">
        <sp:Body/>
        <sp:Header Name="To" Namespace="http://www.w3.org/2005/08/addressing"/>
        <sp:Header Name="From" Namespace="http://www.w3.org/2005/08/addressing"/>
        <sp:Header Name="FaultTo" Namespace="http://www.w3.org/2005/08/addressing"/>
        <sp:Header Name="ReplyTo" Namespace="http://www.w3.org/2005/08/addressing"/>
        <sp:Header Name="MessageID" Namespace="http://www.w3.org/2005/08/addressing"/>
        <sp:Header Name="RelatesTo" Namespace="http://www.w3.org/2005/08/addressing"/>
        <sp:Header Name="Action" Namespace="http://www.w3.org/2005/08/addressing"/>
      </sp:SignedParts>
      <sp:EncryptedParts xmlns:sp="http://schemas.xmlsoap.org/ws/2005/07/securitypolicy">
        <sp:Body/>
      </sp:EncryptedParts>
    </wsp:All>
  </wsp:ExactlyOne>
</wsp:Policy>
<wsp:Policy wsu:Id="NetTcpBinding_IBEServer_policy">
  <wsp:ExactlyOne>
    <wsp:All>
      <mbs:BinaryEncoding
        xmlns:mbs="http://schemas.microsoft.com/ws/06/2004/mspolicy/netbinary1"/>
      <sp:TransportBinding xmlns:sp="http://schemas.xmlsoap.org/ws/2005/07/securitypolicy">
        <wsp:Policy>
          <sp:TransportToken>
            <wsp:Policy>
              <msf:WindowsTransportSecurity
                xmlns:msf="http://schemas.microsoft.com/ws/2006/05/framing/policy">
                <msf:ProtectionLevel>EncryptAndSign</msf:ProtectionLevel>
              </msf:WindowsTransportSecurity>
            </wsp:Policy>
          </sp:TransportToken>
          <sp:AlgorithmSuite>
            <wsp:Policy>
              <sp:Basic256/>
            </wsp:Policy>
          </sp:AlgorithmSuite>
          <sp:Layout>
            <wsp:Policy>
              <sp:Strict/>
            </wsp:Policy>
          </sp:Layout>
        </wsp:Policy>
      </sp:TransportBinding>
      <wsaw:UsingAddressing/>
    </wsp:All>
  </wsp:ExactlyOne>
</wsp:Policy>
<wsdl:import
  namespace="http://Microsoft.SharePoint.Search.Extended.BrowserEngine.Server"
  location="http://serverURI:processPort/BrowserEngine?wsdl=wsdl0"/>

```

```

<wsdl:types/>
<wsdl:binding name="WSHttpBinding_IBEServer" type="i0:IBEServer">
  <wsp:PolicyReference URI="#WSHttpBinding_IBEServer_policy"/>
  <soap12:binding transport="http://schemas.xmlsoap.org/soap/http"/>
  <wsdl:operation name="Process">
    <soap12:operation
      soapAction="http://Microsoft.SharePoint.Search.Extended.BrowserEngine.Server/IBEServer/Process"
      style="document"/>
    <wsdl:input>
      <wsp:PolicyReference URI="#WSHttpBinding_IBEServer_Process_Input_policy"/>
      <soap12:body use="literal"/>
    </wsdl:input>
    <wsdl:output>
      <wsp:PolicyReference URI="#WSHttpBinding_IBEServer_Process_output_policy"/>
      <soap12:body use="literal"/>
    </wsdl:output>
    <wsdl:fault name="ProcessingFaultFault">
      <wsp:PolicyReference URI="#WSHttpBinding_IBEServer_Process_ProcessingFaultFault_Fault"/>
      <soap12:fault name="ProcessingFaultFault" use="literal"/>
    </wsdl:fault>
  </wsdl:operation>
</wsdl:binding>
<wsdl:binding name="NetTcpBinding_IBEServer" type="i0:IBEServer">
  <wsp:PolicyReference URI="#NetTcpBinding_IBEServer_policy"/>
  <soap12:binding transport="http://schemas.microsoft.com/soap/tcp"/>
  <wsdl:operation name="Process">
    <soap12:operation
      soapAction="http://Microsoft.SharePoint.Search.Extended.BrowserEngine.Server/IBEServer/Process"
      style="document"/>
    <wsdl:input>
      <soap12:body use="literal"/>
    </wsdl:input>
    <wsdl:output>
      <soap12:body use="literal"/>
    </wsdl:output>
    <wsdl:fault name="ProcessingFaultFault">
      <soap12:fault name="ProcessingFaultFault" use="literal"/>
    </wsdl:fault>
  </wsdl:operation>
</wsdl:binding>
<wsdl:service name="BEServer">
  <wsdl:port name="WSHttpBinding_IBEServer" binding="tns:WSHttpBinding_IBEServer">
    <soap12:address location="http://serverURI:processPort/BrowserEngine/http"/>
    <wsa10:EndpointReference>
      <wsa10:Address>http://serverURI:processPort/BrowserEngine/http</wsa10:Address>
      <Identity xmlns="http://schemas.xmlsoap.org/ws/2006/02/addressingidentity">
        <Upn>angelika@ad.fast.no</Upn>
      </Identity>
    </wsa10:EndpointReference>
  </wsdl:port>
  <wsdl:port name="NetTcpBinding_IBEServer" binding="tns:NetTcpBinding_IBEServer">
    <soap12:address location="net.tcp://serverURI:14196/BrowserEngine/net.tcp"/>
    <wsa10:EndpointReference>
      <wsa10:Address>net.tcp://serverURI:14196/BrowserEngine/net.tcp</wsa10:Address>
      <Identity xmlns="http://schemas.xmlsoap.org/ws/2006/02/addressingidentity">
        <Upn>angelika@ad.fast.no</Upn>
      </Identity>
    </wsa10:EndpointReference>
  </wsdl:port>
</wsdl:service>

```



```

    </wsa10:EndpointReference>
  </wsdl:port>
</wsdl:service>
</wsdl:definitions>

```

## 6.1.1 http://serverURI:processPort/BrowserEngine?wsdl=wsdl0

```

<?xml version="1.0" encoding="utf-8"?>
<wsdl:definitions
  targetNamespace="http://Microsoft.SharePoint.Search.Extended.BrowserEngine.Server"
  xmlns:wsdl="http://schemas.xmlsoap.org/wsdl/"
  xmlns:wsa10="http://www.w3.org/2005/08/addressing"
  xmlns:wsx="http://schemas.xmlsoap.org/ws/2004/09/mex"
  xmlns:soap12="http://schemas.xmlsoap.org/wsdl/soap12/" xmlns:wsu="http://docs.oasis-
open.org/wss/2004/01/oasis-200401-wss-wssecurity-utility-1.0.xsd"
  xmlns:wsp="http://schemas.xmlsoap.org/ws/2004/09/policy"
  xmlns:wsap="http://schemas.xmlsoap.org/ws/2004/08/addressing/policy"
  xmlns:msc="http://schemas.microsoft.com/ws/2005/12/wsdl/contract"
  xmlns:wsa="http://schemas.xmlsoap.org/ws/2004/08/addressing"
  xmlns:wsam="http://www.w3.org/2007/05/addressing/metadata"
  xmlns:wsaw="http://www.w3.org/2006/05/addressing/wsdl"
  xmlns:tns="http://Microsoft.SharePoint.Search.Extended.BrowserEngine.Server"
  xmlns:soap="http://schemas.xmlsoap.org/wsdl/soap/"
  xmlns:xsd="http://www.w3.org/2001/XMLSchema"
  xmlns:soapenc="http://schemas.xmlsoap.org/soap/encoding/">
  <wsdl:types>
    <xsd:schema
      targetNamespace="http://Microsoft.SharePoint.Search.Extended.BrowserEngine.Server/Imports">
      <xsd:import schemaLocation="http://serverURI:processPort/BrowserEngine?xsd=xsd0"
        namespace="http://Microsoft.SharePoint.Search.Extended.BrowserEngine.Server"/>
      <xsd:import schemaLocation="http://serverURI:processPort/BrowserEngine?xsd=xsd2"
        namespace="http://schemas.datacontract.org/2004/07/Microsoft.SharePoint.Search.Extended.Brows
erEngine.Util"/>
      <xsd:import schemaLocation="http://serverURI:processPort/BrowserEngine?xsd=xsd1"
        namespace="http://schemas.microsoft.com/2003/10/Serialization/" />
      <xsd:import schemaLocation="http://serverURI:processPort/BrowserEngine?xsd=xsd3"
        namespace="http://schemas.microsoft.com/2003/10/Serialization/Arrays"/>
    </xsd:schema>
  </wsdl:types>
  <wsdl:message name="IBEServer_Process_InputMessage">
    <wsdl:part name="parameters" element="tns:Process"/>
  </wsdl:message>
  <wsdl:message name="IBEServer_Process_OutputMessage">
    <wsdl:part name="parameters" element="tns:ProcessResponse"/>
  </wsdl:message>
  <wsdl:message name="IBEServer_Process_ProcessingFaultFault_FaultMessage">
    <wsdl:part name="detail" element="q1:ProcessingFault"
      xmlns:q1="http://schemas.datacontract.org/2004/07/Microsoft.SharePoint.Search.Extended.Browse
rEngine.Util"/>
  </wsdl:message>
  <wsdl:portType name="IBEServer">
    <wsdl:operation name="Process">
      <wsdl:input
        wsaw:Action="http://Microsoft.SharePoint.Search.Extended.BrowserEngine.Server/IBEServer/Proce
ss" message="tns:IBEServer_Process_InputMessage"/>
      <wsdl:output
        wsaw:Action="http://Microsoft.SharePoint.Search.Extended.BrowserEngine.Server/IBEServer/Proce
ssResponse" message="tns:IBEServer_Process_OutputMessage"/>
      <wsdl:fault
        wsaw:Action="http://Microsoft.SharePoint.Search.Extended.BrowserEngine.Server/IBEServer/Proce

```

```

ssProcessingFaultFault" name="ProcessingFaultFault"
message="tns:IBEServer_Process_ProcessingFaultFault_FaultMessage"/>
</wsdl:operation>
</wsdl:portType>
</wsdl:definitions>

```

### 6.1.2 http://serverURI:processPort/BrowserEngine?xsd=xsd0

```

<?xml version="1.0" encoding="utf-8"?>
<xs:schema elementFormDefault="qualified"
targetNamespace="http://Microsoft.SharePoint.Search.Extended.BrowserEngine.Server"
xmlns:xs="http://www.w3.org/2001/XMLSchema"
xmlns:tns="http://Microsoft.SharePoint.Search.Extended.BrowserEngine.Server">
  <xs:import schemaLocation="http://serverURI:processPort/BrowserEngine?xsd=xsd2"
namespace="http://schemas.datacontract.org/2004/07/Microsoft.SharePoint.Search.Extended.Brows
erEngine.Util"/>
  <xs:element name="Process">
    <xs:complexType>
      <xs:sequence>
        <xs:element minOccurs="0" name="uri" nillable="true" type="xs:string"/>
        <xs:element minOccurs="0" name="proxyHost" nillable="true" type="xs:string"/>
        <xs:element minOccurs="0" name="proxyPort" type="xs:unsignedShort"/>
        <xs:element minOccurs="0" name="proxyHeaders" nillable="true" type="xs:string"/>
      </xs:sequence>
    </xs:complexType>
  </xs:element>
  <xs:element name="ProcessResponse">
    <xs:complexType>
      <xs:sequence>
        <xs:element minOccurs="0" name="ProcessResult" nillable="true" type="q1:ResultSet"
xmlns:q1="http://schemas.datacontract.org/2004/07/Microsoft.SharePoint.Search.Extended.Browse
rEngine.Util"/>
      </xs:sequence>
    </xs:complexType>
  </xs:element>
</xs:schema>

```

### 6.1.3 http://serverURI:processPort/BrowserEngine?xsd=xsd1

```

<?xml version="1.0" encoding="utf-8"?>
<xs:schema attributeFormDefault="qualified" elementFormDefault="qualified"
targetNamespace="http://schemas.microsoft.com/2003/10/Serialization/"
xmlns:xs="http://www.w3.org/2001/XMLSchema"
xmlns:tns="http://schemas.microsoft.com/2003/10/Serialization/">
  <xs:element name="anyType" nillable="true" type="xs:anyType"/>
  <xs:element name="anyURI" nillable="true" type="xs:anyURI"/>
  <xs:element name="base64Binary" nillable="true" type="xs:base64Binary"/>
  <xs:element name="boolean" nillable="true" type="xs:boolean"/>
  <xs:element name="byte" nillable="true" type="xs:byte"/>
  <xs:element name="dateTime" nillable="true" type="xs:dateTime"/>
  <xs:element name="decimal" nillable="true" type="xs:decimal"/>
  <xs:element name="double" nillable="true" type="xs:double"/>
  <xs:element name="float" nillable="true" type="xs:float"/>
  <xs:element name="int" nillable="true" type="xs:int"/>
  <xs:element name="long" nillable="true" type="xs:long"/>
  <xs:element name="QName" nillable="true" type="xs:QName"/>
  <xs:element name="short" nillable="true" type="xs:short"/>
  <xs:element name="string" nillable="true" type="xs:string"/>

```

```

<xs:element name="unsignedByte" nillable="true" type="xs:unsignedByte"/>
<xs:element name="unsignedInt" nillable="true" type="xs:unsignedInt"/>
<xs:element name="unsignedLong" nillable="true" type="xs:unsignedLong"/>
<xs:element name="unsignedShort" nillable="true" type="xs:unsignedShort"/>
<xs:element name="char" nillable="true" type="tns:char"/>
<xs:simpleType name="char">
  <xs:restriction base="xs:int"/>
</xs:simpleType>
<xs:element name="duration" nillable="true" type="tns:duration"/>
<xs:simpleType name="duration">
  <xs:restriction base="xs:duration">
    <xs:pattern value="\-?P(\d*D)?(T(\d*H)?(\d*M)?(\d*(\.\d*)?S)?)?"/>
    <xs:minInclusive value="-P10675199DT2H48M5.4775808S"/>
    <xs:maxInclusive value="P10675199DT2H48M5.4775807S"/>
  </xs:restriction>
</xs:simpleType>
<xs:element name="guid" nillable="true" type="tns:guid"/>
<xs:simpleType name="guid">
  <xs:restriction base="xs:string">
    <xs:pattern value="[\da-fA-F]{8}-[\da-fA-F]{4}-[\da-fA-F]{4}-[\da-fA-F]{4}-[\da-fA-F]{12}"/>
  </xs:restriction>
</xs:simpleType>
<xs:attribute name="FactoryType" type="xs:QName"/>
<xs:attribute name="Id" type="xs:ID"/>
<xs:attribute name="Ref" type="xs:IDREF"/>
</xs:schema>

```

## 6.1.4 http://serverURI:processPort/BrowserEngine?xsd=xsd2

```

<?xml version="1.0" encoding="utf-8"?>
<xs:schema elementFormDefault="qualified"
targetNamespace="http://schemas.datacontract.org/2004/07/Microsoft.SharePoint.Search.Extended
.BrowserEngine.Util" xmlns:xs="http://www.w3.org/2001/XMLSchema"
xmlns:tns="http://schemas.datacontract.org/2004/07/Microsoft.SharePoint.Search.Extended.Brows
erEngine.Util">
  <xs:import schemaLocation="http://serverURI:processPort/BrowserEngine?xsd=xsd3"
namespace="http://schemas.microsoft.com/2003/10/Serialization/Arrays"/>
  <xs:complexType name="ResultSet">
    <xs:sequence>
      <xs:element minOccurs="0" name="Checksum" nillable="true" type="xs:string"/>
      <xs:element minOccurs="0" name="Cookies" nillable="true" type="q1:ArrayOfstring"
xmlns:q1="http://schemas.microsoft.com/2003/10/Serialization/Arrays"/>
      <xs:element minOccurs="0" name="Flags" type="xs:unsignedInt"/>
      <xs:element minOccurs="0" name="HTML" nillable="true" type="xs:base64Binary"/>
      <xs:element minOccurs="0" name="HTMLEncoding" nillable="true" type="xs:string"/>
      <xs:element minOccurs="0" name="Links" nillable="true" type="tns:ArrayOfLink"/>
      <xs:element minOccurs="0" name="Thumbnail" nillable="true" type="xs:base64Binary"/>
      <xs:element minOccurs="0" name="ThumbnailFormat" nillable="true" type="xs:string"/>
    </xs:sequence>
  </xs:complexType>
  <xs:element name="ResultSet" nillable="true" type="tns:ResultSet"/>
  <xs:complexType name="ArrayOfLink">
    <xs:sequence>
      <xs:element minOccurs="0" maxOccurs="unbounded" name="Link" nillable="true"
type="tns:Link"/>
    </xs:sequence>
  </xs:complexType>

```

```

<xs:element name="ArrayOfLink" nillable="true" type="tns:ArrayOfLink"/>
<xs:complexType name="Link">
  <xs:sequence>
    <xs:element minOccurs="0" name="Origin" nillable="true" type="xs:string"/>
    <xs:element minOccurs="0" name="Uri" nillable="true" type="xs:string"/>
  </xs:sequence>
</xs:complexType>
<xs:element name="Link" nillable="true" type="tns:Link"/>
<xs:complexType name="ProcessingFault">
  <xs:sequence>
    <xs:element minOccurs="0" name="Code" nillable="true" type="xs:string"/>
    <xs:element minOccurs="0" name="Text" nillable="true" type="xs:string"/>
  </xs:sequence>
</xs:complexType>
<xs:element name="ProcessingFault" nillable="true" type="tns:ProcessingFault"/>
</xs:schema>

```

### 6.1.5 http://serverURI:processPort/BrowserEngine?xsd=xsd3

```

<?xml version="1.0" encoding="utf-8"?>
<xs:schema elementFormDefault="qualified"
targetNamespace="http://schemas.microsoft.com/2003/10/Serialization/Arrays"
xmlns:xs="http://www.w3.org/2001/XMLSchema"
xmlns:tns="http://schemas.microsoft.com/2003/10/Serialization/Arrays">
  <xs:complexType name="ArrayOfstring">
    <xs:sequence>
      <xs:element minOccurs="0" maxOccurs="unbounded" name="string" nillable="true"
type="xs:string"/>
    </xs:sequence>
  </xs:complexType>
  <xs:element name="ArrayOfstring" nillable="true" type="tns:ArrayOfstring"/>
</xs:schema>

```

## 6.2 Status Web service WSDL

```

<?xml version="1.0" encoding="utf-8"?>
<wsdl:definitions name="StatServer" targetNamespace="http://tempuri.org/"
  xmlns:wsdl="http://schemas.xmlsoap.org/wsdl/"
  xmlns:wsa10="http://www.w3.org/2005/08/addressing"
  xmlns:wsx="http://schemas.xmlsoap.org/ws/2004/09/mex"
  xmlns:soap12="http://schemas.xmlsoap.org/wsdl/soap12/"
  xmlns:wsu="http://docs.oasis-open.org/wss/2004/01/oasis-200401-wss-wssecurity-utility-
1.0.xsd"
  xmlns:wsp="http://schemas.xmlsoap.org/ws/2004/09/policy"
  xmlns:wsap="http://schemas.xmlsoap.org/ws/2004/08/addressing/policy"
  xmlns:msc="http://schemas.microsoft.com/ws/2005/12/wsdl/contract"
  xmlns:wsa="http://schemas.xmlsoap.org/ws/2004/08/addressing"
  xmlns:wsam="http://www.w3.org/2007/05/addressing/metadata"
  xmlns:wsaw="http://www.w3.org/2006/05/addressing/wsdl"
  xmlns:tns="http://tempuri.org/"
  xmlns:soap="http://schemas.xmlsoap.org/wsdl/soap/"
  xmlns:i0="http://Microsoft.SharePoint.Search.Extended.BrowserEngine.Server"
  xmlns:xsd="http://www.w3.org/2001/XMLSchema"
  xmlns:soapenc="http://schemas.xmlsoap.org/soap/encoding/">
  <wsp:Policy wsu:Id="WSHttpBinding_IStatServer_policy">
    <wsp:ExactlyOne>
      <wsp>All>

```

```

    <sp:SymmetricBinding xmlns:sp="http://schemas.xmlsoap.org/ws/2005/07/securitypolicy">
      <wsp:Policy>
        <sp:ProtectionToken>
          <wsp:Policy>
            <sp:SecureConversationToken
sp:IncludeToken="http://schemas.xmlsoap.org/ws/2005/07/securitypolicy/IncludeToken/AlwaysToRe
cipient">
              <wsp:Policy>
                <sp:RequireDerivedKeys/>
                <sp:BootstrapPolicy>
                  <wsp:Policy>
                    <sp:SignedParts>
                      <sp:Body/>
                      <sp:Header Name="To" Namespace="http://www.w3.org/2005/08/addressing"/>
                      <sp:Header Name="From" Namespace="http://www.w3.org/2005/08/addressing"/>
                      <sp:Header Name="FaultTo" Namespace="http://www.w3.org/2005/08/addressing"/>
                      <sp:Header Name="ReplyTo" Namespace="http://www.w3.org/2005/08/addressing"/>
                      <sp:Header Name="MessageID" Namespace="http://www.w3.org/2005/08/addressing"/>
                      <sp:Header Name="RelatesTo" Namespace="http://www.w3.org/2005/08/addressing"/>
                      <sp:Header Name="Action" Namespace="http://www.w3.org/2005/08/addressing"/>
                    </sp:SignedParts>
                    <sp:EncryptedParts>
                      <sp:Body/>
                    </sp:EncryptedParts>
                  </sp:SymmetricBinding>
                <wsp:Policy>
                  <sp:ProtectionToken>
                    <wsp:Policy>
                      <sp:SpnegoContextToken
sp:IncludeToken="http://schemas.xmlsoap.org/ws/2005/07/securitypolicy/IncludeToken/AlwaysToRe
cipient">
                        <wsp:Policy>
                          <sp:RequireDerivedKeys/>
                        </wsp:Policy>
                      </sp:SpnegoContextToken>
                    </wsp:Policy>
                  </sp:ProtectionToken>
                  <sp:AlgorithmSuite>
                    <wsp:Policy>
                      <sp:Basic256/>
                    </wsp:Policy>
                  </sp:AlgorithmSuite>
                  <sp:Layout>
                    <wsp:Policy>
                      <sp:Strict/>
                    </wsp:Policy>
                  </sp:Layout>
                  <sp:IncludeTimestamp/>
                  <sp:EncryptSignature/>
                  <sp:OnlySignEntireHeadersAndBody/>
                </wsp:Policy>
              </sp:SymmetricBinding>
            </sp:Wss11>
          <wsp:Policy>
            <sp:MustSupportRefKeyIdentifier/>
            <sp:MustSupportRefIssuerSerial/>
            <sp:MustSupportRefThumbprint/>
            <sp:MustSupportRefEncryptedKey/>
          </wsp:Policy>
        </sp:SecureConversationToken>
      </wsp:Policy>
    </sp:SymmetricBinding>
  </wsp:Policy>
</wsp:Policy>

```

```

        </sp:Wss11>
        <sp:Trust10>
            <wsp:Policy>
                <sp:MustSupportIssuedTokens/>
                <sp:RequireClientEntropy/>
                <sp:RequireServerEntropy/>
            </wsp:Policy>
        </sp:Trust10>
    </wsp:Policy>
</sp:BootstrapPolicy>
</wsp:Policy>
</sp:SecureConversationToken>
</wsp:Policy>
</sp:ProtectionToken>
<sp:AlgorithmSuite>
    <wsp:Policy>
        <sp:Basic256/>
    </wsp:Policy>
</sp:AlgorithmSuite>
<sp:Layout>
    <wsp:Policy>
        <sp:Strict/>
    </wsp:Policy>
</sp:Layout>
<sp:IncludeTimestamp/>
<sp:EncryptSignature/>
<sp:OnlySignEntireHeadersAndBody/>
</wsp:Policy>
</sp:SymmetricBinding>
<sp:Wss11 xmlns:sp="http://schemas.xmlsoap.org/ws/2005/07/securitypolicy">
    <wsp:Policy>
        <sp:MustSupportRefKeyIdentifier/>
        <sp:MustSupportRefIssuerSerial/>
        <sp:MustSupportRefThumbprint/>
        <sp:MustSupportRefEncryptedKey/>
    </wsp:Policy>
</sp:Wss11>
<sp:Trust10 xmlns:sp="http://schemas.xmlsoap.org/ws/2005/07/securitypolicy">
    <wsp:Policy>
        <sp:MustSupportIssuedTokens/>
        <sp:RequireClientEntropy/>
        <sp:RequireServerEntropy/>
    </wsp:Policy>
</sp:Trust10>
<wsoma:OptimizedMimeSerialization

xmlns:wsoma="http://schemas.xmlsoap.org/ws/2004/09/policy/optimizedmimeserialization"/>

    <wsaw:UsingAddressing/>
</wsp:All>
</wsp:ExactlyOne>
</wsp:Policy> <----- correct to here
<wsp:Policy wsu:Id="WSHttpBinding_IStatServer_GetStatus_Input_policy">
    <wsp:ExactlyOne>
        <wsp:All>
            <sp:SignedParts xmlns:sp="http://schemas.xmlsoap.org/ws/2005/07/securitypolicy">
                <sp:Body/>
                <sp:Header Name="To" Namespace="http://www.w3.org/2005/08/addressing"/>
                <sp:Header Name="From" Namespace="http://www.w3.org/2005/08/addressing"/>
            </sp:SignedParts>
        </wsp:All>
    </wsp:ExactlyOne>
</wsp:Policy>

```

```

    <sp:Header Name="FaultTo" Namespace="http://www.w3.org/2005/08/addressing"/>
    <sp:Header Name="ReplyTo" Namespace="http://www.w3.org/2005/08/addressing"/>
    <sp:Header Name="MessageID" Namespace="http://www.w3.org/2005/08/addressing"/>
    <sp:Header Name="RelatesTo" Namespace="http://www.w3.org/2005/08/addressing"/>
    <sp:Header Name="Action" Namespace="http://www.w3.org/2005/08/addressing"/>
  </sp:SignedParts>
  <sp:EncryptedParts xmlns:sp="http://schemas.xmlsoap.org/ws/2005/07/securitypolicy">
    <sp:Body/>
  </sp:EncryptedParts>
</wsp:All>
</wsp:ExactlyOne>
</wsp:Policy>
<wsp:Policy wsu:Id="WSHttpBinding_IStatServer_GetStatus_output_policy">
  <wsp:ExactlyOne>
    <wsp:All>
      <sp:SignedParts xmlns:sp="http://schemas.xmlsoap.org/ws/2005/07/securitypolicy">
        <sp:Body/>
        <sp:Header Name="To" Namespace="http://www.w3.org/2005/08/addressing"/>
        <sp:Header Name="From" Namespace="http://www.w3.org/2005/08/addressing"/>
        <sp:Header Name="FaultTo" Namespace="http://www.w3.org/2005/08/addressing"/>
        <sp:Header Name="ReplyTo" Namespace="http://www.w3.org/2005/08/addressing"/>
        <sp:Header Name="MessageID" Namespace="http://www.w3.org/2005/08/addressing"/>
        <sp:Header Name="RelatesTo" Namespace="http://www.w3.org/2005/08/addressing"/>
        <sp:Header Name="Action" Namespace="http://www.w3.org/2005/08/addressing"/>
      </sp:SignedParts>
      <sp:EncryptedParts xmlns:sp="http://schemas.xmlsoap.org/ws/2005/07/securitypolicy">
        <sp:Body/>
      </sp:EncryptedParts>
    </wsp:All>
  </wsp:ExactlyOne>
</wsp:Policy>
<wsp:Policy wsu:Id="WSHttpBinding_IStatServer_GetStatistics_Input_policy">
  <wsp:ExactlyOne>
    <wsp:All>
      <sp:SignedParts xmlns:sp="http://schemas.xmlsoap.org/ws/2005/07/securitypolicy">
        <sp:Body/>
        <sp:Header Name="To" Namespace="http://www.w3.org/2005/08/addressing"/>
        <sp:Header Name="From" Namespace="http://www.w3.org/2005/08/addressing"/>
        <sp:Header Name="FaultTo" Namespace="http://www.w3.org/2005/08/addressing"/>
        <sp:Header Name="ReplyTo" Namespace="http://www.w3.org/2005/08/addressing"/>
        <sp:Header Name="MessageID" Namespace="http://www.w3.org/2005/08/addressing"/>
        <sp:Header Name="RelatesTo" Namespace="http://www.w3.org/2005/08/addressing"/>
        <sp:Header Name="Action" Namespace="http://www.w3.org/2005/08/addressing"/>
      </sp:SignedParts>
      <sp:EncryptedParts xmlns:sp="http://schemas.xmlsoap.org/ws/2005/07/securitypolicy">
        <sp:Body/>
      </sp:EncryptedParts>
    </wsp:All>
  </wsp:ExactlyOne>
</wsp:Policy>
<wsp:Policy wsu:Id="WSHttpBinding_IStatServer_GetStatistics_output_policy">
  <wsp:ExactlyOne>
    <wsp:All>
      <sp:SignedParts xmlns:sp="http://schemas.xmlsoap.org/ws/2005/07/securitypolicy">
        <sp:Body/>
        <sp:Header Name="To" Namespace="http://www.w3.org/2005/08/addressing"/>
        <sp:Header Name="From" Namespace="http://www.w3.org/2005/08/addressing"/>
        <sp:Header Name="FaultTo" Namespace="http://www.w3.org/2005/08/addressing"/>
        <sp:Header Name="ReplyTo" Namespace="http://www.w3.org/2005/08/addressing"/>
      </sp:SignedParts>
    </wsp:All>
  </wsp:ExactlyOne>
</wsp:Policy>

```

```

    <sp:Header Name="MessageID" Namespace="http://www.w3.org/2005/08/addressing"/>
    <sp:Header Name="RelatesTo" Namespace="http://www.w3.org/2005/08/addressing"/>
    <sp:Header Name="Action" Namespace="http://www.w3.org/2005/08/addressing"/>
  </sp:SignedParts>
  <sp:EncryptedParts xmlns:sp="http://schemas.xmlsoap.org/ws/2005/07/securitypolicy">
    <sp:Body/>
  </sp:EncryptedParts>
</wsp:All>
</wsp:ExactlyOne>
</wsp:Policy>
<wsp:Policy wsu:Id="WSHttpBinding_IStatServer_Ping_Input_policy">
  <wsp:ExactlyOne>
    <wsp:All>
      <sp:SignedParts xmlns:sp="http://schemas.xmlsoap.org/ws/2005/07/securitypolicy">
        <sp:Body/>
        <sp:Header Name="To" Namespace="http://www.w3.org/2005/08/addressing"/>
        <sp:Header Name="From" Namespace="http://www.w3.org/2005/08/addressing"/>
        <sp:Header Name="FaultTo" Namespace="http://www.w3.org/2005/08/addressing"/>
        <sp:Header Name="ReplyTo" Namespace="http://www.w3.org/2005/08/addressing"/>
        <sp:Header Name="MessageID" Namespace="http://www.w3.org/2005/08/addressing"/>
        <sp:Header Name="RelatesTo" Namespace="http://www.w3.org/2005/08/addressing"/>
        <sp:Header Name="Action" Namespace="http://www.w3.org/2005/08/addressing"/>
      </sp:SignedParts>
      <sp:EncryptedParts xmlns:sp="http://schemas.xmlsoap.org/ws/2005/07/securitypolicy">
        <sp:Body/>
      </sp:EncryptedParts>
    </wsp:All>
  </wsp:ExactlyOne>
</wsp:Policy>
<wsp:Policy wsu:Id="WSHttpBinding_IStatServer_Ping_output_policy">
  <wsp:ExactlyOne>
    <wsp:All>
      <sp:SignedParts xmlns:sp="http://schemas.xmlsoap.org/ws/2005/07/securitypolicy">
        <sp:Body/>
        <sp:Header Name="To" Namespace="http://www.w3.org/2005/08/addressing"/>
        <sp:Header Name="From" Namespace="http://www.w3.org/2005/08/addressing"/>
        <sp:Header Name="FaultTo" Namespace="http://www.w3.org/2005/08/addressing"/>
        <sp:Header Name="ReplyTo" Namespace="http://www.w3.org/2005/08/addressing"/>
        <sp:Header Name="MessageID" Namespace="http://www.w3.org/2005/08/addressing"/>
        <sp:Header Name="RelatesTo" Namespace="http://www.w3.org/2005/08/addressing"/>
        <sp:Header Name="Action" Namespace="http://www.w3.org/2005/08/addressing"/>
      </sp:SignedParts>
      <sp:EncryptedParts xmlns:sp="http://schemas.xmlsoap.org/ws/2005/07/securitypolicy">
        <sp:Body/>
      </sp:EncryptedParts>
    </wsp:All>
  </wsp:ExactlyOne>
</wsp:Policy>
<wsp:Policy wsu:Id="NetTcpBinding_IStatServer_policy">
  <wsp:ExactlyOne>
    <wsp:All>
      <msh:BinaryEncoding
        xmlns:msh="http://schemas.microsoft.com/ws/06/2004/mspolicy/netbinary1"/>
      <sp:TransportBinding xmlns:sp="http://schemas.xmlsoap.org/ws/2005/07/securitypolicy">
        <wsp:Policy>
          <sp:TransportToken>
            <wsp:Policy>
              <msh:WindowsTransportSecurity
                xmlns:msh="http://schemas.microsoft.com/ws/2006/05/framing/policy">

```



```

        <msf:ProtectionLevel>EncryptAndSign</msf:ProtectionLevel>
    </msf:WindowsTransportSecurity>
</wsp:Policy>
</sp:TransportToken>
<sp:AlgorithmSuite>
    <wsp:Policy>
        <sp:Basic256/>
    </wsp:Policy>
</sp:AlgorithmSuite>
<sp:Layout>
    <wsp:Policy>
        <sp:Strict/>
    </wsp:Policy>
</sp:Layout>
</wsp:Policy>
</sp:TransportBinding>
<wsaw:UsingAddressing/>
</wsp:All>
</wsp:ExactlyOne>
</wsp:Policy>
<wsdl:import namespace="http://Microsoft.SharePoint.Search.Extended.BrowserEngine.Server"
    location="http://serverURI:statusPort/BrowserEngine/Stat?wsdl=wsdl0"/>
<wsdl:types/>
<wsdl:binding name="WSHttpBinding_IStatServer" type="i0:IStatServer">
    <wsp:PolicyReference URI="#WSHttpBinding_IStatServer_policy"/>
    <soap12:binding transport="http://schemas.xmlsoap.org/soap/http"/>
    <wsdl:operation name="GetStatus">
        <soap12:operation
            soapAction="http://Microsoft.SharePoint.Search.Extended.BrowserEngine.Server/IStatServer/GetS
tatus" style="document"/>
        <wsdl:input>
            <wsp:PolicyReference URI="#WSHttpBinding_IStatServer_GetStatus_Input_policy"/>
            <soap12:body use="literal"/>
        </wsdl:input>
        <wsdl:output>
            <wsp:PolicyReference URI="#WSHttpBinding_IStatServer_GetStatus_output_policy"/>
            <soap12:body use="literal"/>
        </wsdl:output>
    </wsdl:operation>
    <wsdl:operation name="GetStatistics">
        <soap12:operation
            soapAction="http://Microsoft.SharePoint.Search.Extended.BrowserEngine.Server/IStatServer/GetS
tatistics" style="document"/>
        <wsdl:input>
            <wsp:PolicyReference URI="#WSHttpBinding_IStatServer_GetStatistics_Input_policy"/>
            <soap12:body use="literal"/>
        </wsdl:input>
        <wsdl:output>
            <wsp:PolicyReference URI="#WSHttpBinding_IStatServer_GetStatistics_output_policy"/>
            <soap12:body use="literal"/>
        </wsdl:output>
    </wsdl:operation>
    <wsdl:operation name="Ping">
        <soap12:operation
            soapAction="http://Microsoft.SharePoint.Search.Extended.BrowserEngine.Server/IStatServer/Ping
" style="document"/>
        <wsdl:input>
            <wsp:PolicyReference URI="#WSHttpBinding_IStatServer_Ping_Input_policy"/>
            <soap12:body use="literal"/>

```

```

        </wsdl:input>
        <wsdl:output>
            <wsp:PolicyReference URI="#WSHttpBinding_IStatServer_Ping_output_policy"/>
            <soap12:body use="literal"/>
        </wsdl:output>
    </wsdl:operation>
</wsdl:binding>
<wsdl:binding name="NetTcpBinding_IStatServer" type="i0:IStatServer">
    <wsp:PolicyReference URI="#NetTcpBinding_IStatServer_policy"/>
    <soap12:binding transport="http://schemas.microsoft.com/soap/tcp"/>
    <wsdl:operation name="GetStatus">
        <soap12:operation
soapAction="http://Microsoft.SharePoint.Search.Extended.BrowserEngine.Server/IStatServer/GetS
tatus" style="document"/>
        <wsdl:input>
            <soap12:body use="literal"/>
        </wsdl:input>
        <wsdl:output>
            <soap12:body use="literal"/>
        </wsdl:output>
    </wsdl:operation>
    <wsdl:operation name="GetStatistics">
        <soap12:operation
soapAction="http://Microsoft.SharePoint.Search.Extended.BrowserEngine.Server/IStatServer/GetS
tatistics" style="document"/>
        <wsdl:input>
            <soap12:body use="literal"/>
        </wsdl:input>
        <wsdl:output>
            <soap12:body use="literal"/>
        </wsdl:output>
    </wsdl:operation>
    <wsdl:operation name="Ping">
        <soap12:operation
soapAction="http://Microsoft.SharePoint.Search.Extended.BrowserEngine.Server/IStatServer/Ping
" style="document"/>
        <wsdl:input>
            <soap12:body use="literal"/>
        </wsdl:input>
        <wsdl:output>
            <soap12:body use="literal"/>
        </wsdl:output>
    </wsdl:operation>
</wsdl:binding>
<wsdl:service name="StatServer">
    <wsdl:port name="WSHttpBinding_IStatServer" binding="tns:WSHttpBinding_IStatServer">
        <soap12:address location="http://serverURI:statusPort/BrowserEngine/Stat/http"/>
        <wsa10:EndpointReference>
            <wsa10:Address>http://serverURI:statusPort/BrowserEngine/Stat/http</wsa10:Address>
            <Identity xmlns="http://schemas.xmlsoap.org/ws/2006/02/addressingidentity">
                <Upn>angeliqua@ad.fast.no</Upn>
            </Identity>
        </wsa10:EndpointReference>
    </wsdl:port>
    <wsdl:port name="NetTcpBinding_IStatServer" binding="tns:NetTcpBinding_IStatServer">
        <soap12:address location="net.tcp://serverURI:14198/BrowserEngine/Stat/net.tcp"/>
        <wsa10:EndpointReference>
            <wsa10:Address>net.tcp://serverURI:14198/BrowserEngine/Stat/net.tcp</wsa10:Address>
            <Identity xmlns="http://schemas.xmlsoap.org/ws/2006/02/addressingidentity">

```

```

    <Upn>angeliga@ad.fast.no</Upn>
  </Identity>
</wsa10:EndpointReference>
</wsdl:port>
</wsdl:service>
</wsdl:definitions>

```

### 6.2.1 http://serverURI:statusPort/BrowserEngine/Stat?wsdl=wsdl0

```

<?xml version="1.0" encoding="utf-8"?>
<wsdl:definitions
  targetNamespace="http://Microsoft.SharePoint.Search.Extended.BrowserEngine.Server"
  xmlns:wsdl="http://schemas.xmlsoap.org/wsdl/"
  xmlns:wsa10="http://www.w3.org/2005/08/addressing"
  xmlns:wsx="http://schemas.xmlsoap.org/ws/2004/09/mex"
  xmlns:soap12="http://schemas.xmlsoap.org/wsdl/soap12/" xmlns:wsu="http://docs.oasis-
open.org/wss/2004/01/oasis-200401-wss-wssecurity-utility-1.0.xsd"
  xmlns:wsp="http://schemas.xmlsoap.org/ws/2004/09/policy"
  xmlns:wsap="http://schemas.xmlsoap.org/ws/2004/08/addressing/policy"
  xmlns:msc="http://schemas.microsoft.com/ws/2005/12/wsdl/contract"
  xmlns:wsa="http://schemas.xmlsoap.org/ws/2004/08/addressing"
  xmlns:wsam="http://www.w3.org/2007/05/addressing/metadata"
  xmlns:wsaw="http://www.w3.org/2006/05/addressing/wsdl"
  xmlns:tns="http://Microsoft.SharePoint.Search.Extended.BrowserEngine.Server"
  xmlns:soap="http://schemas.xmlsoap.org/wsdl/soap/"
  xmlns:xsd="http://www.w3.org/2001/XMLSchema"
  xmlns:soapenc="http://schemas.xmlsoap.org/soap/encoding/">
  <wsdl:types>
    <xsd:schema
      targetNamespace="http://Microsoft.SharePoint.Search.Extended.BrowserEngine.Server/Imports">
      <xsd:import schemaLocation="http://serverURI:statusPort/BrowserEngine/Stat?xsd=xsd0"
        namespace="http://Microsoft.SharePoint.Search.Extended.BrowserEngine.Server"/>
      <xsd:import schemaLocation="http://serverURI:statusPort/BrowserEngine/Stat?xsd=xsd1"
        namespace="http://schemas.microsoft.com/2003/10/Serialization/" />
      <xsd:import schemaLocation="http://serverURI:statusPort/BrowserEngine/Stat?xsd=xsd2"
        namespace="http://schemas.datacontract.org/2004/07/Microsoft.SharePoint.Search.Extended.Brows
erEngine.Util"/>
    </xsd:schema>
  </wsdl:types>
  <wsdl:message name="IStatServer_GetStatus_InputMessage">
    <wsdl:part name="parameters" element="tns:GetStatus"/>
  </wsdl:message>
  <wsdl:message name="IStatServer_GetStatus_OutputMessage">
    <wsdl:part name="parameters" element="tns:GetStatusResponse"/>
  </wsdl:message>
  <wsdl:message name="IStatServer_GetStatistics_InputMessage">
    <wsdl:part name="parameters" element="tns:GetStatistics"/>
  </wsdl:message>
  <wsdl:message name="IStatServer_GetStatistics_OutputMessage">
    <wsdl:part name="parameters" element="tns:GetStatisticsResponse"/>
  </wsdl:message>
  <wsdl:message name="IStatServer_Ping_InputMessage">
    <wsdl:part name="parameters" element="tns:Ping"/>
  </wsdl:message>
  <wsdl:message name="IStatServer_Ping_OutputMessage">
    <wsdl:part name="parameters" element="tns:PingResponse"/>
  </wsdl:message>
  <wsdl:portType name="IStatServer">
    <wsdl:operation name="GetStatus">

```

```

        <wsdl:input
wsaw:Action="http://Microsoft.SharePoint.Search.Extended.BrowserEngine.Server/IStatServer/Get
Status" message="tns:IStatServer_GetStatus_InputMessage"/>
        <wsdl:output
wsaw:Action="http://Microsoft.SharePoint.Search.Extended.BrowserEngine.Server/IStatServer/Get
StatusResponse" message="tns:IStatServer_GetStatus_OutputMessage"/>
    </wsdl:operation>
    <wsdl:operation name="GetStatistics">
        <wsdl:input
wsaw:Action="http://Microsoft.SharePoint.Search.Extended.BrowserEngine.Server/IStatServer/Get
Statistics" message="tns:IStatServer_GetStatistics_InputMessage"/>
        <wsdl:output
wsaw:Action="http://Microsoft.SharePoint.Search.Extended.BrowserEngine.Server/IStatServer/Get
StatisticsResponse" message="tns:IStatServer_GetStatistics_OutputMessage"/>
    </wsdl:operation>
    <wsdl:operation name="Ping">
        <wsdl:input
wsaw:Action="http://Microsoft.SharePoint.Search.Extended.BrowserEngine.Server/IStatServer/Pin
g" message="tns:IStatServer_Ping_InputMessage"/>
        <wsdl:output
wsaw:Action="http://Microsoft.SharePoint.Search.Extended.BrowserEngine.Server/IStatServer/Pin
gResponse" message="tns:IStatServer_Ping_OutputMessage"/>
    </wsdl:operation>
</wsdl:portType>
</wsdl:definitions>

```

## 6.2.2 http://serverURI:statusPort/BrowserEngine/Stat?xsd=xsd0

```

<?xml version="1.0" encoding="utf-8"?>
<xs:schema elementFormDefault="qualified"
targetNamespace="http://Microsoft.SharePoint.Search.Extended.BrowserEngine.Server"
xmlns:xs="http://www.w3.org/2001/XMLSchema"
xmlns:tns="http://Microsoft.SharePoint.Search.Extended.BrowserEngine.Server">
    <xs:import schemaLocation="http://serverURI:statusPort/BrowserEngine/Stat?xsd=xsd2"
namespace="http://schemas.datacontract.org/2004/07/Microsoft.SharePoint.Search.Extended.Brows
erEngine.Util"/>
    <xs:element name="GetStatus">
        <xs:complexType>
            <xs:sequence/>
        </xs:complexType>
    </xs:element>
    <xs:element name="GetStatusResponse">
        <xs:complexType>
            <xs:sequence>
                <xs:element minOccurs="0" name="GetStatusResult" nillable="true" type="q1:Status"
xmlns:q1="http://schemas.datacontract.org/2004/07/Microsoft.SharePoint.Search.Extended.Browse
rEngine.Util"/>
            </xs:sequence>
        </xs:complexType>
    </xs:element>
    <xs:element name="GetStatistics">
        <xs:complexType>
            <xs:sequence/>
        </xs:complexType>
    </xs:element>
    <xs:element name="GetStatisticsResponse">
        <xs:complexType>
            <xs:sequence>

```

```

    <xs:element minOccurs="0" name="GetStatisticsResult" nillable="true" type="q2:Statistics"
xmlns:q2="http://schemas.datacontract.org/2004/07/Microsoft.SharePoint.Search.Extended.Browse
rEngine.Util"/>
  </xs:sequence>
</xs:complexType>
</xs:element>
<xs:element name="Ping">
  <xs:complexType>
    <xs:sequence/>
  </xs:complexType>
</xs:element>
<xs:element name="PingResponse">
  <xs:complexType>
    <xs:sequence>
      <xs:element minOccurs="0" name="PingResult" nillable="true" type="xs:string"/>
    </xs:sequence>
  </xs:complexType>
</xs:element>
</xs:schema>

```

### 6.2.3 http://serverURI:statusPort/BrowserEngine/Stat?xsd=xsd1

```

<?xml version="1.0" encoding="utf-8"?>
<xs:schema attributeFormDefault="qualified" elementFormDefault="qualified"
targetNamespace="http://schemas.microsoft.com/2003/10/Serialization/"
xmlns:xs="http://www.w3.org/2001/XMLSchema"
xmlns:tns="http://schemas.microsoft.com/2003/10/Serialization/">
  <xs:element name="anyType" nillable="true" type="xs:anyType"/>
  <xs:element name="anyURI" nillable="true" type="xs:anyURI"/>
  <xs:element name="base64Binary" nillable="true" type="xs:base64Binary"/>
  <xs:element name="boolean" nillable="true" type="xs:boolean"/>
  <xs:element name="byte" nillable="true" type="xs:byte"/>
  <xs:element name="dateTime" nillable="true" type="xs:dateTime"/>
  <xs:element name="decimal" nillable="true" type="xs:decimal"/>
  <xs:element name="double" nillable="true" type="xs:double"/>
  <xs:element name="float" nillable="true" type="xs:float"/>
  <xs:element name="int" nillable="true" type="xs:int"/>
  <xs:element name="long" nillable="true" type="xs:long"/>
  <xs:element name="QName" nillable="true" type="xs:QName"/>
  <xs:element name="short" nillable="true" type="xs:short"/>
  <xs:element name="string" nillable="true" type="xs:string"/>
  <xs:element name="unsignedByte" nillable="true" type="xs:unsignedByte"/>
  <xs:element name="unsignedInt" nillable="true" type="xs:unsignedInt"/>
  <xs:element name="unsignedLong" nillable="true" type="xs:unsignedLong"/>
  <xs:element name="unsignedShort" nillable="true" type="xs:unsignedShort"/>
  <xs:element name="char" nillable="true" type="tns:char"/>
  <xs:simpleType name="char">
    <xs:restriction base="xs:int"/>
  </xs:simpleType>
  <xs:element name="duration" nillable="true" type="tns:duration"/>
  <xs:simpleType name="duration">
    <xs:restriction base="xs:duration">
      <xs:pattern value="\-?P(\d*D)?(T(\d*H)?(\d*M)?(\d*(\.\d*)?S)?)?"/>
      <xs:minInclusive value="-P10675199DT2H48M5.4775808S"/>
      <xs:maxInclusive value="P10675199DT2H48M5.4775807S"/>
    </xs:restriction>
  </xs:simpleType>
  <xs:element name="guid" nillable="true" type="tns:guid"/>

```

```

<xs:simpleType name="guid">
  <xs:restriction base="xs:string">
    <xs:pattern value="[\da-fA-F]{8}-[\da-fA-F]{4}-[\da-fA-F]{4}-[\da-fA-F]{4}-[\da-fA-F]{12}"/>
  </xs:restriction>
</xs:simpleType>
<xs:attribute name="FactoryType" type="xs:QName"/>
<xs:attribute name="Id" type="xs:ID"/>
<xs:attribute name="Ref" type="xs:IDREF"/>
</xs:schema>

```

## 6.2.4 http://serverURI:statusPort/BrowserEngine/Stat?xsd=xsd2

```

<?xml version="1.0" encoding="utf-8"?>
<xs:schema elementFormDefault="qualified"
targetNamespace="http://schemas.datacontract.org/2004/07/Microsoft.SharePoint.Search.Extended
.BrowserEngine.Util" xmlns:xs="http://www.w3.org/2001/XMLSchema"
xmlns:tns="http://schemas.datacontract.org/2004/07/Microsoft.SharePoint.Search.Extended.Brows
erEngine.Util">
  <xs:complexType name="Status">
    <xs:sequence>
      <xs:element minOccurs="0" name="threadStatusList" nillable="true"
type="tns:ArrayOfThreadData"/>
    </xs:sequence>
  </xs:complexType>
  <xs:element name="Status" nillable="true" type="tns:Status"/>
  <xs:complexType name="ArrayOfThreadData">
    <xs:sequence>
      <xs:element minOccurs="0" maxOccurs="unbounded" name="ThreadData" nillable="true"
type="tns:ThreadData"/>
    </xs:sequence>
  </xs:complexType>
  <xs:element name="ArrayOfThreadData" nillable="true" type="tns:ArrayOfThreadData"/>
  <xs:complexType name="ThreadData">
    <xs:sequence>
      <xs:element minOccurs="0" name="Age" type="xs:dateTime"/>
      <xs:element minOccurs="0" name="ThreadId" type="xs:int"/>
      <xs:element minOccurs="0" name="Uri" nillable="true" type="xs:string"/>
    </xs:sequence>
  </xs:complexType>
  <xs:element name="ThreadData" nillable="true" type="tns:ThreadData"/>
  <xs:complexType name="Statistics">
    <xs:sequence>
      <xs:element minOccurs="0" name="BEStats" nillable="true" type="tns:BEStatistics"/>
      <xs:element minOccurs="0" name="PipelineStatList" nillable="true"
type="tns:ArrayOfPipelineStat"/>
    </xs:sequence>
  </xs:complexType>
  <xs:element name="Statistics" nillable="true" type="tns:Statistics"/>
  <xs:complexType name="BEStatistics">
    <xs:sequence>
      <xs:element minOccurs="0" name="CacheBytes" type="xs:long"/>
      <xs:element minOccurs="0" name="CacheHits" type="xs:long"/>
      <xs:element minOccurs="0" name="CacheInserts" type="xs:long"/>
      <xs:element minOccurs="0" name="CacheMisses" type="xs:long"/>
      <xs:element minOccurs="0" name="CacheSize" type="xs:long"/>
      <xs:element minOccurs="0" name="DownloadRequests" type="xs:long"/>
      <xs:element minOccurs="0" name="DownloadTimeAverage" type="xs:float"/>
    </xs:sequence>
  </xs:complexType>

```

```

<xs:element minOccurs="0" name="DownloadTimeCount" type="xs:long"/>
<xs:element minOccurs="0" name="DownloadTimeMax" type="xs:long"/>
<xs:element minOccurs="0" name="DownloadTimeMin" type="xs:long"/>
<xs:element minOccurs="0" name="DownloadTimeTotal" type="xs:long"/>
<xs:element minOccurs="0" name="FailedRequests" type="xs:long"/>
<xs:element minOccurs="0" name="ProcessTimeAverage" type="xs:float"/>
<xs:element minOccurs="0" name="ProcessTimeCount" type="xs:long"/>
<xs:element minOccurs="0" name="ProcessTimeMax" type="xs:long"/>
<xs:element minOccurs="0" name="ProcessTimeMin" type="xs:long"/>
<xs:element minOccurs="0" name="ProcessTimeTotal" type="xs:long"/>
<xs:element minOccurs="0" name="ProcessedRequests" type="xs:long"/>
<xs:element minOccurs="0" name="TimedOutRequests" type="xs:long"/>
</xs:sequence>
</xs:complexType>
<xs:element name="BEStatistics" nillable="true" type="tns:BEStatistics"/>
<xs:complexType name="ArrayOfPipelineStat">
  <xs:sequence>
    <xs:element minOccurs="0" maxOccurs="unbounded" name="PipelineStat" nillable="true"
type="tns:PipelineStat"/>
  </xs:sequence>
</xs:complexType>
<xs:element name="ArrayOfPipelineStat" nillable="true" type="tns:ArrayOfPipelineStat"/>
<xs:complexType name="PipelineStat">
  <xs:sequence>
    <xs:element minOccurs="0" name="ExtractorStat" nillable="true"
type="tns:ArrayOfExtractorStat"/>
    <xs:element minOccurs="0" name="Name" nillable="true" type="xs:string"/>
  </xs:sequence>
</xs:complexType>
<xs:element name="PipelineStat" nillable="true" type="tns:PipelineStat"/>
<xs:complexType name="ArrayOfExtractorStat">
  <xs:sequence>
    <xs:element minOccurs="0" maxOccurs="unbounded" name="ExtractorStat" nillable="true"
type="tns:ExtractorStat"/>
  </xs:sequence>
</xs:complexType>
<xs:element name="ArrayOfExtractorStat" nillable="true" type="tns:ArrayOfExtractorStat"/>
<xs:complexType name="ExtractorStat">
  <xs:sequence>
    <xs:element minOccurs="0" name="LinkCount" type="xs:long"/>
    <xs:element minOccurs="0" name="Name" nillable="true" type="xs:string"/>
    <xs:element minOccurs="0" name="Time" nillable="true" type="tns:ContinuousVariable"/>
  </xs:sequence>
</xs:complexType>
<xs:element name="ExtractorStat" nillable="true" type="tns:ExtractorStat"/>
<xs:complexType name="ContinuousVariable">
  <xs:sequence>
    <xs:element minOccurs="0" name="Average" type="xs:float"/>
    <xs:element minOccurs="0" name="Count" type="xs:long"/>
    <xs:element minOccurs="0" name="Max" type="xs:long"/>
    <xs:element minOccurs="0" name="Min" type="xs:long"/>
    <xs:element minOccurs="0" name="Value" type="xs:long"/>
  </xs:sequence>
</xs:complexType>
<xs:element name="ContinuousVariable" nillable="true" type="tns:ContinuousVariable"/>
</xs:schema>

```

## 7 Appendix B: Product Behavior

The information in this specification is applicable to the following Microsoft products or supplemental software. References to product versions include released service packs:

- Microsoft® FAST™ Search Server 2010

Exceptions, if any, are noted below. If a service pack or Quick Fix Engineering (QFE) number appears with the product version, behavior changed in that service pack or QFE. The new behavior also applies to subsequent service packs of the product unless otherwise specified. If a product edition appears with the product version, behavior is different in that product edition.

Unless otherwise specified, any statement of optional behavior in this specification that is prescribed using the terms SHOULD or SHOULD NOT implies product behavior in accordance with the SHOULD or SHOULD NOT prescription. Unless otherwise specified, the term MAY implies that the product does not follow the prescription.



## 8 Change Tracking

No table of changes is available. The document is either new or has had no changes since its last release.

## 9 Index

### A

Abstract data model  
  server ([section 3.1.1](#) 20, [section 3.2.1](#) 23)  
[Applicability](#) 9  
[ArrayOfExtractorStat complex type](#) 15  
[ArrayOfPipelineStat complex type](#) 17  
[ArrayOfString complex type](#) 12  
[ArrayOfThreadData complex type](#) 14  
[Attribute groups](#) 19  
[Attributes](#) 19

### B

[Base64 decoded HTML document example](#) 34  
[BEStatistics complex type](#) 15

### C

[Capability negotiation](#) 9  
[Change tracking](#) 57  
Client  
  [overview](#) 20  
[Complex types](#) 11  
  [ArrayOfExtractorStat](#) 15  
  [ArrayOfPipelineStat](#) 17  
  [ArrayOfString](#) 12  
  [ArrayOfThreadData](#) 14  
  [BEStatistics](#) 15  
  [ContinuousVariable](#) 14  
  [ExtractorStat](#) 14  
  [Link](#) 12  
  [PipelineStat](#) 16  
  [ProcessingFault](#) 12  
  [ResultSet](#) 17  
  [Statistics](#) 18  
  [Status](#) 18  
  [ThreadData](#) 13  
[ContinuousVariable complex type](#) 14

### D

Data model - abstract  
  server ([section 3.1.1](#) 20, [section 3.2.1](#) 23)

### E

Events  
  local - server ([section 3.1.6](#) 23, [section 3.2.6](#) 31)  
  timer - server ([section 3.1.5](#) 23, [section 3.2.5](#) 31)  
Examples  
  [Process – Base64 decoded HTML document](#) 34  
  [Process – HTML document](#) 32  
  [Process – overview](#) 32  
  [Process – request](#) 32  
  [Process – response](#) 33  
[ExtractorStat complex type](#) 14

### F

[Fields - vendor-extensible](#) 9  
[Full WSDL](#) 36

### G

[Glossary](#) 6  
[Groups](#) 19

### H

[HTML document example](#) 32

### I

[IBEServer](#) 20  
[Implementer - security considerations](#) 35  
[Index of security parameters](#) 35  
[Informative references](#) 8  
Initialization  
  server ([section 3.1.3](#) 20, [section 3.2.3](#) 25)  
[Introduction](#) 6  
[IStatServer](#) 23

### L

[Link complex type](#) 12  
Local events  
  server ([section 3.1.6](#) 23, [section 3.2.6](#) 31)

### M

Message processing  
  server ([section 3.1.4](#) 20, [section 3.2.4](#) 25)  
Messages  
  [ArrayOfExtractorStat complex type](#) 15  
  [ArrayOfPipelineStat complex type](#) 17  
  [ArrayOfString complex type](#) 12  
  [ArrayOfThreadData complex type](#) 14  
  [attribute groups](#) 19  
  [attributes](#) 19  
  [BEStatistics complex type](#) 15  
  [complex types](#) 11  
  [ContinuousVariable complex type](#) 14  
  [elements](#) 11  
  [enumerated](#) 11  
  [ExtractorStat complex type](#) 14  
  [groups](#) 19  
  [Link complex type](#) 12  
  [namespaces](#) 10  
  [PipelineStat complex type](#) 16  
  [ProcessingFault complex type](#) 12  
  [ResultSet complex type](#) 17  
  [simple types](#) 18  
  [Statistics complex type](#) 18  
  [Status complex type](#) 18  
  [syntax](#) 10

[ThreadData complex type](#) 13  
[transport](#) 10

## N

[Namespaces](#) 10  
[Normative references](#) 6

## O

Operations  
    [GetStatistics](#) 27  
    [GetStatus](#) 25  
    [Ping](#) 29  
    [Process](#) 20  
[Overview \(synopsis\)](#) 8

## P

[Parameters - security index](#) 35  
[PipelineStat complex type](#) 16  
[Preconditions](#) 9  
[Prerequisites](#) 9  
[Process example](#) 32  
    [Base64 decoded HTML document](#) 34  
    [HTML document](#) 32  
    [request](#) 32  
    [response](#) 33  
[ProcessingFault complex type](#) 12  
[Product behavior](#) 56

## R

References  
    [informative](#) 8  
    [normative](#) 6  
[Relationship to other protocols](#) 9  
[Request example](#) 32  
[Response example](#) 33  
[ResultSet complex type](#) 17

## S

Security  
    [implementer considerations](#) 35  
    [parameter index](#) 35  
Sequencing rules  
    server ([section 3.1.4](#) 20, [section 3.2.4](#) 25)  
Server  
    abstract data model ([section 3.1.1](#) 20, [section 3.2.1](#) 23)  
    [GetStatistics operation](#) 27  
    [GetStatus operation](#) 25  
    initialization ([section 3.1.3](#) 20, [section 3.2.3](#) 25)  
    local events ([section 3.1.6](#) 23, [section 3.2.6](#) 31)  
    message processing ([section 3.1.4](#) 20, [section 3.2.4](#) 25)  
    [overview](#) 20  
    [Ping operation](#) 29  
    [Process operation](#) 20  
    sequencing rules ([section 3.1.4](#) 20, [section 3.2.4](#) 25)

timer events ([section 3.1.5](#) 23, [section 3.2.5](#) 31)  
timers ([section 3.1.2](#) 20, [section 3.2.2](#) 25)

[Simple types](#) 18  
[Standards assignments](#) 9  
[Statistics complex type](#) 18  
[Status complex type](#) 18  
Syntax  
    [messages - overview](#) 10

## T

[ThreadData complex type](#) 13  
Timer events  
    server ([section 3.1.5](#) 23, [section 3.2.5](#) 31)  
Timers  
    server ([section 3.1.2](#) 20, [section 3.2.2](#) 25)  
[Tracking changes](#) 57  
[Transport](#) 10  
Types  
    [complex](#) 11  
    [simple](#) 18

## V

[Vendor-extensible fields](#) 9  
[Versioning](#) 9

## W

[WSDL](#) 36