

[MS-AIPS]: Authenticated Internet Protocol Specification

Intellectual Property Rights Notice for Open Specifications Documentation

- **Technical Documentation.** Microsoft publishes Open Specifications documentation for protocols, file formats, languages, standards as well as overviews of the interaction among each of these technologies.
- **Copyrights.** This documentation is covered by Microsoft copyrights. Regardless of any other terms that are contained in the terms of use for the Microsoft website that hosts this documentation, you may make copies of it in order to develop implementations of the technologies described in the Open Specifications and may distribute portions of it in your implementations using these technologies or your documentation as necessary to properly document the implementation. You may also distribute in your implementation, with or without modification, any schema, IDL's, or code samples that are included in the documentation. This permission also applies to any documents that are referenced in the Open Specifications.
- **No Trade Secrets.** Microsoft does not claim any trade secret rights in this documentation.
- **Patents.** Microsoft has patents that may cover your implementations of the technologies described in the Open Specifications. Neither this notice nor Microsoft's delivery of the documentation grants any licenses under those or any other Microsoft patents. However, a given Open Specification may be covered by Microsoft [Open Specification Promise](#) or the [Community Promise](#). If you would prefer a written license, or if the technologies described in the Open Specifications are not covered by the Open Specifications Promise or Community Promise, as applicable, patent licenses are available by contacting iplg@microsoft.com.
- **Trademarks.** The names of companies and products contained in this documentation may be covered by trademarks or similar intellectual property rights. This notice does not grant any licenses under those rights.
- **Fictitious Names.** The example companies, organizations, products, domain names, e-mail addresses, logos, people, places, and events depicted in this documentation are fictitious. No association with any real company, organization, product, domain name, email address, logo, person, place, or event is intended or should be inferred.

Reservation of Rights. All other rights are reserved, and this notice does not grant any rights other than specifically described above, whether by implication, estoppel, or otherwise.

Tools. The Open Specifications do not require the use of Microsoft programming tools or programming environments in order for you to develop an implementation. If you have access to Microsoft programming tools and environments you are free to take advantage of them. Certain Open Specifications are intended for use in conjunction with publicly available standard specifications and network programming art, and assumes that the reader either is familiar with the aforementioned material or has immediate access to it.

Revision Summary

Date	Revision History	Revision Class	Comments
03/14/2007	1.0		Version 1.0 release
04/10/2007	1.1		Version 1.1 release
06/08/2007	2.0	Major	Updated and revised the technical content.
07/10/2007	3.0	Major	Updated and revised the technical content.
08/17/2007	4.0	Major	Revised packet names.
09/21/2007	5.0	Major	Updated and revised the technical content.
10/26/2007	6.0	Major	Updated and revised the technical content.
01/25/2008	7.0	Major	Updated and revised the technical content.
03/14/2008	8.0	Major	Technical and editorial changes based on feedback.
06/20/2008	9.0	Major	Updated and revised the technical content.
07/25/2008	9.0.1	Editorial	Revised and edited the technical content.
08/29/2008	9.1	Minor	Updated the technical content.
10/24/2008	9.1.1	Editorial	Revised and edited the technical content.
12/05/2008	10.0	Major	Updated and revised the technical content.
01/16/2009	10.0.1	Editorial	Revised and edited the technical content.
02/27/2009	11.0	Major	Updated and revised the technical content.
04/10/2009	12.0	Major	Updated and revised the technical content.
05/22/2009	13.0	Major	Updated and revised the technical content.
07/02/2009	13.1	Minor	Updated the technical content.
08/14/2009	14.0	Major	Updated and revised the technical content.
09/25/2009	15.0	Major	Updated and revised the technical content.
11/06/2009	15.1	Minor	Updated the technical content.
12/18/2009	15.2	Minor	Updated the technical content.
01/29/2010	15.3	Minor	Updated the technical content.
03/12/2010	16.0	Major	Updated and revised the technical content.
04/23/2010	17.0	Major	Updated and revised the technical content.

Date	Revision History	Revision Class	Comments
06/04/2010	18.0	Major	Updated and revised the technical content.
07/16/2010	19.0	Major	Significantly changed the technical content.
08/27/2010	19.0	No change	No changes to the meaning, language, or formatting of the technical content.
10/08/2010	20.0	Major	Significantly changed the technical content.
11/19/2010	21.0	Major	Significantly changed the technical content.
01/07/2011	21.0	No change	No changes to the meaning, language, or formatting of the technical content.
02/11/2011	21.0	No change	No changes to the meaning, language, or formatting of the technical content.
03/25/2011	21.0	No change	No changes to the meaning, language, or formatting of the technical content.
05/06/2011	21.0	No change	No changes to the meaning, language, or formatting of the technical content.
06/17/2011	21.1	Minor	Clarified the meaning of the technical content.

Contents

1	Introduction	8
1.1	Glossary	8
1.2	References.....	9
1.2.1	Normative References.....	9
1.2.2	Informative References	11
1.3	Overview	12
1.4	Relationship to Other Protocols.....	13
1.5	Prerequisites/Preconditions	13
1.6	Applicability Statement.....	13
1.7	Versioning and Capability Negotiation.....	13
1.8	Vendor-Extensible Fields.....	14
1.9	Standards Assignments	14
2	Messages.....	16
2.1	Transport.....	16
2.2	Message Syntax	16
2.2.1	ISAKMP Header Format Packet.....	16
2.2.2	Generic Payload Header Packet	19
2.2.3	Payload Types.....	20
2.2.3.1	GSS-API Payload (Payload Type 0x81) Packet	20
2.2.3.2	Crypto Payload (Payload Type 0x85) Packet.....	22
2.2.3.2.1	Crypto Payload 0x85 Encryption Flag Set	22
2.2.3.2.2	Crypto Payload 0x85 Encryption Flag Not Set	24
2.2.3.2.3	Format of the Generic Payload Header for the Crypto Payload.....	24
2.2.3.3	GSS_ID 0x86 Payload Packet.....	24
2.2.3.4	Auth Payload (Payload Type 0x87) Packet	25
2.2.3.5	Notify Payload (Payload Type 0x0B) Packet.....	26
2.2.3.6	Notify Payload (Payload Type 0x0B) Notify Acquire Packet.....	28
3	Protocol Details.....	29
3.1	Common Details	29
3.1.1	Abstract Data Model	33
3.1.2	Timers	36
3.1.3	Initialization	37
3.1.4	Higher-Layer Triggered Events.....	37
3.1.4.1	IP Traffic Match SPD Protect-using-IPsec Rule	37
3.1.4.2	Explicit IPsec Negotiation Request	38
3.1.5	Processing Events and Sequencing Rules.....	38
3.1.5.1	Receiving a Reliable Notify Message	38
3.1.5.2	Receiving an Unreliable Notify Message	38
3.1.5.3	Receiving a Reliable Notify Acknowledgement	38
3.1.6	Timer Events	39
3.1.6.1	Negotiation Retransmission Timer.....	39
3.1.6.2	Notify Retransmission Timer	39
3.1.6.3	Responder Time-Out Timer	39
3.1.6.4	MM SA Lifetime	39
3.1.6.5	QM Rekey Timer	39
3.1.6.6	Connection State Timer Events.....	39
3.1.7	Other Local Events	39
3.1.7.1	IP Address Deletion.....	39

3.1.7.2	AuthIP Shutdown.....	40
3.1.7.3	IPSec Policy Change.....	40
3.1.7.4	AuthIP Key Material Generation	40
3.1.7.5	Sending QM Notify Messages.....	42
3.1.7.6	Enter DoS Protection Mode	42
3.1.7.7	New Connection Initiation	42
3.2	AuthIP Main Mode Initiator Role.....	43
3.2.1	Abstract Data Model	43
3.2.2	Timers	43
3.2.3	Initialization	43
3.2.4	Higher-Layer Triggered Events.....	43
3.2.5	Processing Events and Sequencing Rules.....	44
3.2.5.1	Received Generalized Main Mode First Exchange Response	44
3.2.6	Timer Events	46
3.2.7	Other Local Events	46
3.3	AuthIP Main Mode Responder Role	46
3.3.1	Abstract Data Model	46
3.3.2	Timers	46
3.3.3	Initialization	46
3.3.4	Higher-Layer Triggered Events.....	46
3.3.5	Processing Events and Sequencing Rules.....	46
3.3.5.1	Received Generalize Main Mode First Exchange Response	46
3.3.5.2	Received IKEv1 Packet	48
3.3.5.3	Invalid Message Received	48
3.3.6	Timer Events	48
3.3.7	Other Local Events	49
3.3.7.1	Limits on New Negotiations from Peer Reached	49
3.4	AuthIP Quick Mode Initiator Role	49
3.4.1	Abstract Data Model	49
3.4.2	Timers	49
3.4.2.1	QM SA Time Lifetime Expiration.....	49
3.4.3	Initialization	49
3.4.4	Higher-Layer Triggered Events.....	49
3.4.5	Processing Events and Sequencing Rules.....	50
3.4.5.1	Quick Mode First Exchange Response	50
3.4.5.2	Quick Mode Second Exchange Response	52
3.4.5.3	QM Rekey Acquire Notification Received	53
3.4.5.4	Error Notify Received	54
3.4.6	Timer Events	54
3.4.6.1	QM SA Lifetime Timer Expiration	54
3.4.7	Other Local Events	54
3.4.7.1	Invalid Message Received	54
3.4.7.2	QM SA Byte Lifetime Expiration	54
3.4.7.3	Transition to Main Mode Initiator First Exchange Done.....	54
3.4.7.4	Transition to QM Rekey Requested State	55
3.5	AuthIP Quick Mode Responder Role.....	56
3.5.1	Abstract Data Model	56
3.5.2	Timers	56
3.5.3	Initialization	56
3.5.4	Higher Layer Triggered Events	56
3.5.5	Processing Events and Sequencing Rules.....	57
3.5.5.1	Received Quick Mode First Exchange Request.....	57
3.5.5.2	Received Quick Mode Second Exchange Request	58

3.5.6	Timer Events	60
3.5.7	Other Local Events	60
3.5.7.1	Invalid Message Received	60
3.6	AuthIP Extended Mode Initiator Role	60
3.6.1	Abstract Data Model	60
3.6.2	Timers	60
3.6.3	Initialization	60
3.6.4	Higher Layer Triggered Events	60
3.6.5	Processing Events and Sequencing Rules.....	61
3.6.5.1	Received Extended Mode First Exchange Response	61
3.6.5.2	Received Extended Mode Final Exchange Response	62
3.6.5.3	Invalid Message Received	63
3.6.6	Timer Events	63
3.6.7	Other Local Events	63
3.6.7.1	Transition Quick Mode Initiator Done.....	63
3.6.7.2	Extended Mode Initiator GSS Exchange Success	64
3.7	AuthIP Extended Mode Responder Role.....	65
3.7.1	Abstract Data Model	65
3.7.2	Timers	65
3.7.3	Initialization	65
3.7.4	Higher-Layer Triggered Events.....	65
3.7.5	Processing Events and Sequencing Rules.....	65
3.7.5.1	Received Extended Mode First Exchange Request	65
3.7.5.2	Received Extended Mode Final Exchange Request	68
3.7.6	Timer Events	69
3.7.7	Other Local Events	70
3.7.7.1	Invalid Message Received	70
3.8	Generalized AuthIP GSS-API Initiator Role	70
3.8.1	Abstract Data Model	70
3.8.2	Timers	70
3.8.3	Initialization	70
3.8.4	Higher-Layer Triggered Events.....	70
3.8.5	Processing Events and Sequencing Rules.....	70
3.8.5.1	GSS-API Response Received	70
3.8.6	Timer Events	71
3.8.7	Other Local Events	71
3.8.7.1	GSS-API Start	71
3.9	Generalized AuthIP GSS-API Responder Role.....	72
3.9.1	Abstract Data Model	72
3.9.2	Timers	72
3.9.3	Initialization	72
3.9.4	Higher-Layer Triggered Events.....	72
3.9.5	Processing Events and Sequencing Rules.....	72
3.9.5.1	GSS-API Request Received	72
3.9.6	Timer Events	73
3.9.7	Other Local Events	73
3.9.7.1	Invalid Message Received	73
3.10	Authenticated Firewall Mode.....	73
3.10.1	Abstract Data Model.....	73
3.10.2	Timers	73
3.10.3	Initialization.....	74
3.10.4	Higher-Layer Triggered Events	74
3.10.4.1	New Connection Initiated	74

3.10.4.2	Negotiation of Authenticated Firewall Encapsulation	74
3.10.4.3	Sending a Packet on an Existing Connection	74
3.10.5	Message Processing Rules.....	75
3.10.5.1	Responder Receiving an Encapsulated Authenticated Firewall Connection Packet	75
3.10.5.2	Responder Receiving a Plaintext Authenticated Firewall Connection Packet.....	75
3.10.5.3	Initiator Receiving a Plaintext Authenticated Firewall Connection Packet	75
3.10.5.4	Receiving an ICMP Packet	75
3.11	Impersonated SA lookup	75
3.11.1	Abstract Data Model.....	75
3.11.2	Timers	75
3.11.3	Initialization.....	76
3.11.4	Higher-Layer Triggered Events	76
3.11.4.1	New Connection Initiated	76
3.11.4.2	Sending a Packet on an Existing Connection.....	76
3.11.5	Message Processing Rules.....	76
3.11.5.1	Responder Receiving a Packet on an SA.....	76
4	Protocol Examples.....	77
4.1	Main Mode - No Extended Mode	77
4.2	Kerberos Extended Mode	78
4.3	Extended Mode Authentication Retry	79
5	Security.....	80
5.1	Security Considerations for Implementers.....	80
5.1.1	Policy Construction	80
5.1.2	Credential/Identity Protection	80
5.2	Index of Security Parameters	80
6	Appendix A: Product Behavior	81
7	Change Tracking.....	87
8	Index	89

1 Introduction

The Authenticated Internet Protocol is derived from the **Internet Key Exchange (IKE)** Protocol, as specified in [\[RFC2409\]](#). The Authenticated Internet Protocol supports a more generalized authentication **exchange** than IKE. This protocol also supports optimizations in key exchange and policy discoverability.

1.1 Glossary

The following terms are defined in [\[MS-GLOS\]](#):

authentication header (AH)
authentication mode
domain of interpretation (DOI)
Encapsulating Security Payload (ESP)
exchange
exchange type
flow
Generic Security Services (GSS)
initiator
Internet Key Exchange (IKE)
Internet Protocol security (IPsec)
Internet Security Association and Key Management Protocol (ISAKMP)
keying material
main mode (MM)
main mode security association (MM SA)
mutual authentication
negotiation
negotiation discovery
one-way authentication
perfect forward secrecy
phase
quick mode (QM)
quick mode security association (QM SA)
responder
security association (SA)
security association database (SAD)
security policy database (SPD)
security principal
security principal name (SPN)
Security Support Provider Interface (SSPI)
Simple and Protected GSS-API Negotiation Mechanism (SPNEGO)
transport mode
tunnel mode
Unicode string

The following terms are specific to this document:

anonymous authentication: An **authentication mode** in which neither party verifies the identity of the other party.

explicit credentials: User credentials that are passed as input to the GSS-API [\[GSS\]](#).

extended mode (EM): An optional phase of Authenticated Internet Protocol (AuthIP) **negotiation** during which the peers perform a second round of authentication. This **phase** does not exist in the **Internet Key Exchange (IKE)** Protocol.

main mode security association database (MMSAD): A database that contains operational state for each **main mode (MM) security association (SA)**. For more information, see [3.1.1](#).

Authenticated Firewall (authFW): A mode of operation for **IPsec** and AuthIP in which **SAs** are negotiated as specified in section [3.1](#), but with all traffic on the **SA** sent in cleartext, except the first packet which is sent both in cleartext and with encapsulation, as specified in section [3.10.4.2](#). The encapsulated packet serves as an authenticated signal to the remote host to accept packets from the sending IP address and port. This mode of operation allows **IPsec** to be used strictly for host access control, based on the policies defined in the PAD (See [\[RFC4301\]](#), section 4.4.3), rather than for in-transit data protection. See section [3.10](#) for more details.

MAY, SHOULD, MUST, SHOULD NOT, MUST NOT: These terms (in all caps) are used as described in [\[RFC2119\]](#). All statements of optional behavior use either MAY, SHOULD, or SHOULD NOT.

1.2 References

References to Microsoft Open Specification documents do not include a publishing year because links are to the latest version of the documents, which are updated frequently. References to other documents include a publishing year when one is available.

1.2.1 Normative References

We conduct frequent surveys of the normative references to assure their continued availability. If you have any issue with finding a normative reference, please contact dochelp@microsoft.com. We will assist you in finding the relevant information. Please check the archive site, <http://msdn2.microsoft.com/en-us/library/E4BD6494-06AD-4aed-9823-445E921C9624>, as an additional source.

[GSS] Piper, D., and Swander, B., "A GSS-API Authentication Method for IKE", Internet Draft, July 2001, <http://tools.ietf.org/html/draft-ietf-ipsec-isakmp-gss-auth-07>

If you have any trouble finding [GSS], please check [here](#).

[IANAIPSEC] Internet Assigned Numbers Authority, "Internet Key Exchange (IKE) Attributes", November 2006, <http://www.iana.org/assignments/ipsec-registry>

[IANAISAKMP] Internet Assigned Numbers Authority, "'Magic Numbers' for ISAKMP Protocol", October 2006, <http://www.iana.org/assignments/isakmp-registry>

[MS-ERREF] Microsoft Corporation, "[Windows Error Codes](#)".

[MS-IKEE] Microsoft Corporation, "[Internet Key Exchange Protocol Extensions](#)".

[MS-KILE] Microsoft Corporation, "[Kerberos Protocol Extensions](#)".

[MS-NLMP] Microsoft Corporation, "[NT LAN Manager \(NTLM\) Authentication Protocol Specification](#)".

[MS-WSO] Microsoft Corporation, "[Windows System Overview](#)".

[RFC768] Postel, J., "User Datagram Protocol", STD 6, RFC 768, August 1980, <http://www.ietf.org/rfc/rfc768.txt>

[RFC792] Postel, J., "Internet Control Message Protocol", RFC 792, September 1981, <http://www.ietf.org/rfc/rfc792.txt>

[RFC1122] Braden, R., Ed., "Requirements for Internet Hosts -- Communication Layers", STD 3, RFC 1122, October 1989, <http://www.ietf.org/rfc/rfc1122.txt>

[RFC1812] Baker, F., Ed., "Requirements for IP Version 4 Routers", RFC 1812, June 1995, <http://www.ietf.org/rfc/rfc1812.txt>

[RFC1964] Linn, J., "The Kerberos Version 5 GSS-API Mechanism", RFC 1964, June 1996, <http://www.ietf.org/rfc/rfc1964.txt>

[RFC2119] Bradner, S., "Key words for use in RFCs to Indicate Requirement Levels", BCP 14, RFC 2119, March 1997, <http://www.rfc-editor.org/rfc/rfc2119.txt>

[RFC2405] Madson, C., and Doraswamy, N., "The ESP DES-CBC Cipher Algorithm With Explicit IV", RFC 2405, November 1998, <http://www.ietf.org/rfc/rfc2405.txt>

[RFC2407] Piper, D., "The Internet IP Security Domain of Interpretation for ISAKMP", RFC 2407, November 1998, <http://www.ietf.org/rfc/rfc2407.txt>

[RFC2408] Maughan, D., Schertler, M., Schneider, M., and Turner, J., "Internet Security Association and Key Management Protocol (ISAKMP)", RFC 2408, November 1998, <http://www.ietf.org/rfc/rfc2408.txt>

[RFC2409] Harkins, D., and Carrel, D., "The Internet Key Exchange (IKE)", RFC 2409, November 1998, <http://www.ietf.org/rfc/rfc2409.txt>

[RFC2410] Glenn, R., and Kent, S., "The NULL Encryption Algorithm and Its Use With IPsec", RFC 2410, November 1998, <http://www.ietf.org/rfc/rfc2410.txt>

[RFC2451] Pereira, R., and Adams, R., "The ESP CBC-Mode Cipher Algorithms", RFC 2451, November 1998, <http://www.ietf.org/rfc/rfc2451.txt>

[RFC3546] Blake-Wilson, S., Nystrom, M., Hopwood, D., et al., "Transport Layer Security (TLS) Extensions", RFC 3546, June 2003, <http://www.ietf.org/rfc/rfc3546.txt>

[RFC3602] Frankel, S., Glenn, R., and Kelly, S., "The AES-CBC Cipher Algorithm and Its Use with IPsec", RFC 3602, September 2003, <http://www.ietf.org/rfc/rfc3602.txt>

[RFC3947] Kivinen, T., Swander, B., Huttunen, A., and Volpe, V., "Negotiation of NAT-Traversal in the IKE", RFC 3947, January 2005, <http://www.ietf.org/rfc/rfc3947.txt>

[RFC3948] Huttunen, A., Swander, B., Volpe, V., et al., "UDP Encapsulation of IPsec ESP Packets", RFC 3948, January 2005, <http://www.ietf.org/rfc/rfc3948.txt>

[RFC4301] Kent, S., and Seo, K., "Security Architecture for the Internet Protocol", RFC 4301, December 2005, <http://www.ietf.org/rfc/rfc4301.txt>

[RFC4303] Kent, S., "IP Encapsulating Security Payload (ESP)", RFC 4303, December 2005, <http://www.ietf.org/rfc/rfc4303.txt>

[RFC4868] Kelly, S., and Frankel, S., "Using HMAC-SHA-256, HMAC-SHA-384, and HMAC-SHA-512 with IPsec", RFC 4868, May 2007, <http://www.ietf.org/rfc/rfc4868.txt>

[RFC5246] Dierks, T., and Rescorla, E., "The Transport Layer Security (TLS) Protocol Version 1.2", RFC 5246, August 2008, <http://www.ietf.org/rfc/rfc5246.txt>

[SHA256] National Institute of Standards and Technology, "FIPS 180-2, Secure Hash Standard (SHS)", August 2002, <http://csrc.nist.gov/publications/fips/fips180-2/fips180-2withchangenotice.pdf>

[SP800-56A] Barker, E., Johnson, D., and Smid, M., "Recommendation for Pair-Wise Key Establishment Schemes Using Discrete Logarithm Cryptography", March 2006, http://csrc.nist.gov/groups/ST/toolkit/documents/SP800-56Arev1_3-8-07.pdf

1.2.2 Informative References

[ECP] Fu, D. and Solinas, J., "ECP Groups For IKE and IKEv2", September 2005, <http://tools.ietf.org/id/draft-ietf-ipsec-ike-ecp-groups-02.txt>

[FIPS140] National Institute of Standards and Technology, "Federal Information Processing Standards Publication 140-2: Security Requirements for Cryptographic Modules", December 2002, <http://csrc.nist.gov/publications/fips/fips140-2/fips1402.pdf>

[FIPS180] Federal Information Processing Standards Publication, "Secure Hash Standard", FIPS PUB 180-1, April 1995, <http://www.itl.nist.gov/fipspubs/fip180-1.htm>

[MS-GLOS] Microsoft Corporation, "[Windows Protocols Master Glossary](#)".

[MS-GPFAS] Microsoft Corporation, "[Group Policy: Firewall and Advanced Security Data Structure](#)".

[MS-GPIPESEC] Microsoft Corporation, "[Group Policy: IP Security \(IPsec\) Protocol Extension](#)".

[RFC2104] Krawczyk, H., Bellare, M., and Canetti, R., "HMAC: Keyed-Hashing for Message Authentication", RFC 2104, February 1997, <http://www.ietf.org/rfc/rfc2104.txt>

[RFC2403] Madson, C., and Glenn, R., "The Use of HMAC-MD5-96 Within ESP and AH", RFC 2403, November 1998, <http://www.ietf.org/rfc/rfc2403.txt>

[RFC2404] Madson, C., and Glenn, R., "The Use of HMAC-SHA-1-96 Within ESP and AH", RFC 2404, November 1998, <http://www.ietf.org/rfc/rfc2404.txt>

[RFC2451] Pereira, R., and Adams, R., "The ESP CBC-Mode Cipher Algorithms", RFC 2451, November 1998, <http://www.ietf.org/rfc/rfc2451.txt>

[RFC2743] Linn, J., "Generic Security Service Application Program Interface Version 2, Update 1", RFC 2743, January 2000, <http://www.ietf.org/rfc/rfc2743.txt>

[RFC3526] Kivinen, T., and Kojo, M., "More Modular Exponential (MODP) Diffie-Hellman Groups for Internet Key Exchange (IKE)", RFC 3526, May 2003, <http://www.ietf.org/rfc/rfc3526.txt>

[RFC3602] Frankel, S., Glenn, R., and Kelly, S., "The AES-CBC Cipher Algorithm and Its Use with IPsec", RFC 3602, September 2003, <http://www.ietf.org/rfc/rfc3602.txt>

[RFC4106] Viega, J., and McGrew, D., "The Use of Galois/Counter Mode (GCM) in IPsec Encapsulating Security Payload (ESP)", RFC 4106, June 2005, <http://www.ietf.org/rfc/rfc4106.txt>

[RFC4120] Neuman, C., Yu, T., Hartman, S., and Raeburn, K., "The Kerberos Network Authentication Service (V5)", RFC 4120, July 2005, <http://www.ietf.org/rfc/rfc4120.txt>

[RFC4302] Kent, S., "IP Authentication Header", RFC 4302, December 2005, <http://www.ietf.org/rfc/rfc4302.txt>

[RFC4306] Kaufman, C., "Internet Key Exchange (IKEv2) Protocol", RFC 4306, December 2005, <http://www.ietf.org/rfc/rfc4306.txt>

[RFC4543] McGrew, D., and Viega, J., "The Use of Galois Message Authentication Code (GMAC) in IPsec ESP and AH", RFC 4543, May 2006, <http://www.ietf.org/rfc/rfc4543.txt>

1.3 Overview

The Authenticated Internet Protocol (AuthIP) is a keying protocol that is similar to Internet Key Exchange version 1 (IKEv1) as specified in [\[RFC2409\]](#) and Internet Key Exchange version 2 (IKEv2) as specified in [\[RFC4306\]](#). The Authenticated Internet Protocol uses the same basic protocol constructs and message formats as IKEv1 and IKEv2, and serves the same purpose: peer authentication and keying of **authentication header (AH)** [\[RFC4302\]](#) and **Encapsulating Security Payload (ESP)** [\[RFC4303\]](#) **security associations (SAs)**.

The Authenticated Internet Protocol does not interoperate with IKEv1 or IKEv2. The main differences between the Authenticated Internet Protocol, and IKEv1 and IKEv2 are:

- Two rounds of authentication: The Authenticated Internet Protocol adds an **extended mode (EM)** exchange to IKE during which a second set of credentials (for example, user credentials) can be negotiated. IKEv1 allows only a single round of authentication. IKEv2 can support multiple rounds of authentication by using the Extensible Authentication Protocol (EAP) as specified in [\[RFC4306\]](#) section 3.16.
- Credentials are negotiated per **flow**: The Authenticated Internet Protocol allows credentials to be negotiated on a per-flow basis. IKEv1 and IKEv2 allow only a single set of credentials for all flows between two peers.
- Authentication method retry: All the mutually acceptable authentication methods are tried in sequence until one succeeds or all fail. In IKEv1, the first authentication failure causes the entire **negotiation** to fail. IKEv2 has the same behavior for the non-EAP methods. Authentication retry for EAP is implementation dependent.
- One-way trust: The Authenticated Internet Protocol allows one-way trust between peers. IKEv1 always requires **mutual authentication**. IKEv2 can support **one-way authentication** by using EAP methods that support one-way authentication.
- Optimized exchanges: The **quick mode (QM)** exchange can overlap with the end of the **main mode (MM)** exchange. In the optimal configuration, two roundtrips are sufficient to establish quick mode security associations (SAs). IKEv1 requires three roundtrips for the same negotiation. IKEv2 requires only two roundtrips in the optimal configuration.
- NAT traversal: The Authenticated Internet Protocol uses [\[RFC3947\]](#) when operating over Internet Protocol (IP) v4 and when one or both peers are behind a network address translation (NAT).

In both the Authenticated Internet Protocol and IKE, each negotiation is composed of a series of one or more exchanges. An exchange consists of one request from the **initiator**, followed by one response from the **responder**. The initiator starts all exchanges. The roles do not reverse during a negotiation. The initiator and responder go through successive exchanges until the protocol successfully terminates (and **quick mode security associations** are created); or until the protocol fails (and all corresponding states are deleted). During **phase 1**, as specified in the Internet Key Exchange of the protocol, a **main mode security association (MM SA)** is established. The MM SA is used to encrypt additional Authenticated Internet Protocol and IKE traffic. Multiple negotiations can occur over the lifetime of an MM SA.

In both the Authenticated Internet Protocol and IKE, the initiator and responder roles are dynamically determined based on higher-layer events and local policy. After an MM SA is established between peers, either peer may function as the initiator or the responder in subsequent negotiations over the lifetime of the MM SA. Unlike IKE, the Authenticated Internet Protocol maintains the initial initiator or responder relationship over an MM SA lifetime. This is required when AuthIP performs user authentication.

An Authenticated Internet Protocol implementation may support the [Internet Key Exchange Protocol Extensions](#): IKE fragmentation, fast failover, negotiation discovery, and denial of service protection as specified in [MS-IKEE].<1>

1.4 Relationship to Other Protocols

The Authenticated Internet Protocol operates on top of the User Datagram Protocol (UDP) as specified in [RFC768](#). This protocol extends the Internet Key Exchange version 1 (IKEv1) and retains most IKEv1 structure and message formats. Authenticated Internet Protocol semantics can be used instead of or in cooperation with IKEv1 and/or IKEv2 between peers when keying authentication header (AH) and Encapsulating Security Payload (ESP) security associations (SAs).

For authentication purposes, the Authenticated Internet Protocol depends on **Generic Security Services (GSS)**-API as described in [MS-WSO](#), and specified in [RFC2743](#), [GSS](#), and section [2.2.3.1](#). The authentication methods that are used may introduce dependencies on other protocols, such as Kerberos, Transport Layer Security (TLS), and NTLM. For more information, see [RFC4120](#), [RFC1964](#), [RFC3546](#), and [MS-NLMP](#).

The GSS-API implementation details are described in [MS-WSO](#) and specified in section [2.2.3.1](#).

The relationship between the Authenticated Internet Protocol and the Group Policy: IP Security (IPSec) Protocol Extension [MS-GPIPSEC](#) and Group Policy: Firewall and Advanced Security Data Structure [MS-GPFAS](#) is described in [MS-WSO](#) section 3.1.1.6.

1.5 Prerequisites/Preconditions

The Authenticated Internet Protocol assumes that both the initiator and the responder have an IP address and have UDP connectivity. The Authenticated Internet Protocol also assumes that the initiator possesses the responder's IP address.

1.6 Applicability Statement

The Authenticated Internet Protocol extends IKEv1 and can be enabled for negotiating any **Internet Protocol security (IPsec) transport mode** or **tunnel mode** security associations (SAs).

Credentials that are negotiated on a per-flow basis can be used to implement fine-grained access control on the responder, for example, per connection/per user. This fine-grained access control is not possible in IKEv1 or IKEv2.

1.7 Versioning and Capability Negotiation

This document covers versioning in the following areas:

- Protocol versions: The protocol version is part of the **Internet Security Association and Key Management Protocol (ISAKMP)** header as specified in [RFC2408](#) section 3.1. Both IKE and the Authenticated Internet Protocol use version 1.0.

- Exchange modes and authentication: The Authenticated Internet Protocol supports the following varieties of **anonymous**, one-way, and mutual authentications, which depend on the exchange mode that is in use (either main mode or extended mode).

Exchange mode	Authentication modes
Main mode (MM)	Anonymous, one-way, and mutual
Extended mode (EM)	One-way and mutual

Extended mode (EM) does not support an anonymous authentication option because an anonymous authentication in EM would be the same as EM authentication not performing at all. In MM, anonymous authentication mode is accompanied by a Diffie-Hellman exchange.

The following authentication methods are supported. See section [2.2.3.4](#) for details on the corresponding values for each authentication method.

Authentication method	Options
Anonymous	No authentication.
Kerberos [RFC4120]	Mutual authentication only.
NTLM [MS-NLMP]	One-way authentication only (client authentication).
TLS [RFC3546]	One-way or mutual authentication. If one-way, always server authentication.

- Cryptographic parameters: These parameters are negotiated in different phases of the protocol (MM and QM). The algorithm and parameter numbers are specified in [\[IANAIPSEC\]](#) and [\[IANAISAKMP\]](#). The vendor can implement any cryptographic algorithms. [<2>](#)
- Capability negotiation: Similar to IKE, the Authenticated Internet Protocol can advertise specific capabilities through Vendor ID payloads as specified in [\[RFC2408\]](#) section 3.16. [<3>](#)

Vendors can create unique vendor IDs for their specific implementation. [<4>](#)

- IKEv1 coexistence: When the initiator supports both IKEv1 and the Authenticated Internet Protocol, the initiator determines which protocol to use in negotiating SAs that are based on the capabilities of its remote peer. See section [3.2](#) for more information.

1.8 Vendor-Extensible Fields

The Authenticated Internet Protocol inherits the extensibility features of the **Internet Security Association and Key Management Protocol (ISAKMP)**: private **exchange types**, private payload types, Vendor ID payloads, and encryption and authentication algorithms. These extensibility mechanisms are specified in [\[RFC2408\]](#) section 3. This protocol does not add any new extensibility mechanisms to ISAKMP or IKEv1. Vendors MAY extend the Authenticated Internet Protocol by using the mechanisms that are provided by ISAKMP and IKEv1.

The Authenticated Internet Protocol uses GSS-API exchanges for authentication as specified in [\[RFC2743\]](#) section 2, but non-extensibly, supporting only a fixed set of security services.

1.9 Standards Assignments

The Authenticated Internet Protocol uses the assigned numbers from the Internet Assigned Numbers Authority (IANA), IPsec Registry (IANAIPSEC), and ISAKMP Registry (IANAISAKMP). All the new

values that are used in the Authenticated Internet Protocol are in the private range as specified in [\[IANAIPSEC\]](#) and [\[IANAISAKMP\]](#). Standard assignments have not been received for this protocol.

2 Messages

2.1 Transport

Authenticated Internet Protocol messages are transported over the Internet Security Association and Key Management Protocol (ISAKMP) as specified in [\[RFC2408\]](#), which by default, uses UDP port 500. If a NAT has been detected, the Authenticated Internet Protocol runs over ports 500 and 4500, as specified in [\[RFC3947\]](#) section 4. However, the Authenticated Internet Protocol MAY run over a different set of ports that are mutually agreed upon by the peers. [<5>](#)

The Authenticated Internet Protocol payload formats are specified in [\[RFC2408\]](#), with additions defined in section [2.2](#) of this document. Authenticated Internet Protocol messages have a header with a fixed format, followed by a variable number of payloads. The protocol uses the ISAKMP header format as specified in [\[RFC2408\]](#) section 3.1.

Unless otherwise specified, all fields are sent and encoded in network order.

2.2 Message Syntax

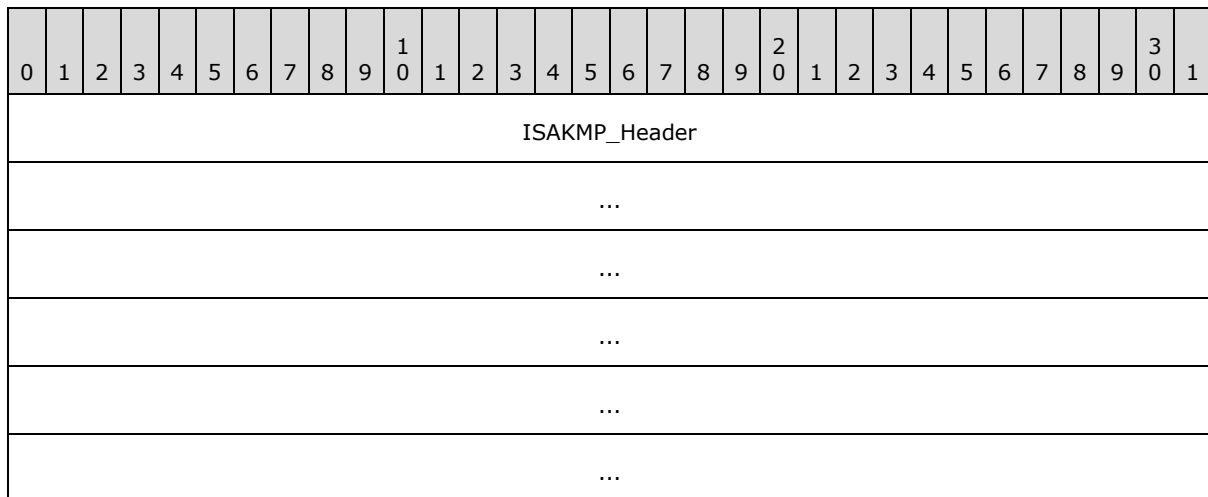
2.2.1 ISAKMP Header Format Packet

The Authenticated Internet Protocol messages are Internet Security Association and Key Management Protocol (ISAKMP) messages, as specified in [\[RFC2408\]](#) section 3, and [\[RFC3947\]](#) sections 3.2 and 5.2. Except where otherwise specified, each Authenticated Internet Protocol message consists of an ISAKMP header and a single Crypto payload that encapsulates a sequence of Authenticated Internet Protocol payloads. The payloads that are encapsulated by the Crypto payload are encrypted when the MM session keys are available. Prior to encryption, the Crypto payload is in clear text.

This protocol defines additional values for the **Exchange_Type** field of an ISAKMP message.

The ISAKMP message packet is used in the establishment, negotiation, modification, and deletion of security associations (SAs).

The following diagram shows the format of an ISAKMP message.



ISAKMP payload type	Value
SecurityAssociation	0x01
Proposal	0x02
Transform	0x03
KeyExchange	0x04
Identification	0x05
Certificate	0x06
CertificateRequest	0x07
Hash	0x08
Signature	0x09
Nonce	0x0A
Notification	0x0B
Delete	0x0C
VendorID	0x0D
NAT Discovery Payload	0x14
NAT Original Address Payload	0x15
Reserved	0x0E — 0x7F
PrivateUse	0x80 — 0xFF

Major_Version (4 bits): Indicates the major version of the ISAKMP protocol in use. Implementations MUST set the major version to 1. This is identical to those specified in [\[RFC2408\]](#) section 3.1.

Minor_Version (4 bits): Indicates the minor version of the ISAKMP protocol in use. Implementations SHOULD set the minor version to 0. Packets that have a minor version number that is larger than 0 MUST be accepted.

Exchange_Type (1 byte): The Authenticated Internet Protocol exchange types are in the private use range, as specified in [\[RFC2408\]](#) section 3.1.

The Authenticated Internet Protocol main mode (MM) exchange corresponds to the IKEv1 identity protection exchange, as specified in [\[RFC2408\]](#) section 4.5.

The Authenticated Internet Protocol quick mode (QM) exchange corresponds to the IKEv1 quick mode exchange (as specified in [\[RFC2409\]](#) section 5.5).

The Authenticated Internet Protocol extended mode (EM) exchange corresponds to the identity protection exchange, as specified in section [3.7](#).

The Authenticated Internet Protocol notify exchange corresponds to the IKEv1 informational exchange, as specified in [\[RFC2408\]](#) section 4.8.

This protocol defines the exchange types that are shown in the following table.

Value	Meaning
0xF3	MM exchange type
0xF4	QM exchange type
0xF5	EM exchange type
0xF6	Notify exchange type

Flags (1 byte): Identical to those specified in [\[RFC2408\]](#) section 3.1. Only the E(encryption) flag is used. Use of the encryption flag is the same as [\[RFC2408\]](#). The encryption flag MUST be set as specified in [\[RFC2408\]](#), section 3.1. The encryption flag MUST be set whenever an encrypted payload is sent. Encrypted payloads are denoted as HDR* in the diagrams in this specification. All other flags MUST be set to 0. In particular, there is no C(Commit) bit functionality as defined in [\[RFC2408\]](#), section 3.1.

Message_ID (4 bytes): The unique message identifier that is used to demultiplex messages from concurrent QM negotiations. This field MUST be set to 0 during Main Mode negotiations and MUST be set to 1 during Extended Mode negotiations. This value is generated by the initiator of the QM negotiation. This is identical to those specified in [\[RFC2408\]](#) section 3.1. This is set from the **Current state** field in the SA. See section [3.1.1](#) for details.

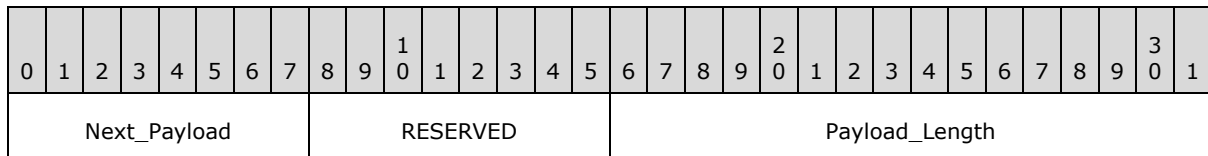
Length (4 bytes): The length, in bytes, of the total message (header + payloads). This is identical to those specified in [\[RFC2408\]](#) section 3.1.

Payload (variable): MUST contain a valid ISAKMP payload. The payload is used to transfer information such as SA data, or key generation and authentication data.

2.2.2 Generic Payload Header Packet

Each payload in Authenticated Internet Protocol messages starts with the Generic payload header, as specified in [\[RFC2408\]](#) section 3.2.

The following diagram shows the Generic payload header packet structure.



Next_Payload (1 byte): Indicates the payload type of the next payload in the message. If the current payload is the last in the message, this field MUST be 0.

RESERVED (1 byte): Unused. This field MUST be set to 0. The responder MUST ignore this field.

Payload_Length (2 bytes): The length, in bytes, of this payload, including the Generic payload header.

2.2.3 Payload Types

The Authenticated Internet Protocol reuses the following payload types from [\[RFC2408\]](#) section 3.1.

RFC 2408 payload types	Value
NONE	0x00
Security association (SA)	0x01
Proposal (P)	0x02
Transform (T)	0x03
Key exchange (KE)	0x04
Identification (ID)	0x05
Hash (HASH)	0x08
Nonce (NONCE)	0x0A
Notification (N)	0x0B
Vendor ID	0x0D

The Certificate, Certificate Request, Signature, and Delete payload types are not used by the Authenticated Internet Protocol. Certificate-based authentication is performed in this protocol through GSS-API, as described in [\[MS-WSO\]](#).

This protocol also defines the following additional payload types. The payload types are allocated from the private use range as defined in [\[RFC2408\]](#) section 3.1.

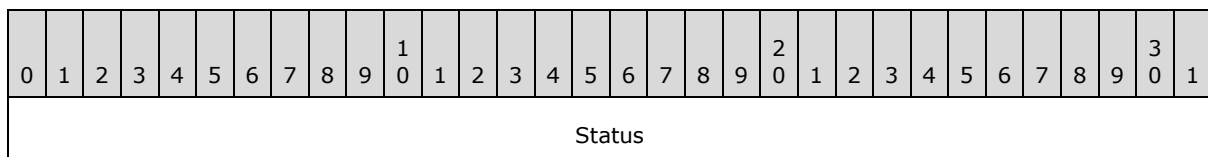
AuthIP payload types	Value
Security Support Provider Interface Token (GSS-API) as defined in [GSS]	0x81
Crypto payload (CRYPTO)	0x85
GSS-API Endpoint Name (GSS_ID)	0x86
Authentication (Auth)	0x87

Implementers can add additional payload types for their own purposes.

2.2.3.1 GSS-API Payload (Payload Type 0x81) Packet

This is the GSS-API payload (as specified in [\[GSS\]](#) section 3.3.3) without the vendor-encoding field and with additional status and flag fields.

The following diagram shows the GSS-API Payload 0x81 packet structure.



Flags	GSS-API_Token (variable)
...	

Status (4 bytes): On failure, a 4-byte error code is returned by GSS-API. This value MUST be 0x00000000 on success. Error logging can be implemented in a variety of ways. [<6>](#)

Flags (1 byte): The following table shows the possible flag values.

Value	Meaning
0x01	GSS_NEW_GSS_EXCHANGE This flag indicates the start of a new authentication exchange. It is only valid on messages sent by an initiator.
0x02	GSS_IMPERSONATION_ACTIVE This flag indicates that the GSS-API security principal name (SPN) for this exchange should be interpreted as a user SPN. It is only valid on messages sent by an initiator. When this flag is set, the corresponding security association (Main mode or Extended mode) MUST have the Impersonation active flag set to TRUE (see section 3.1.1).
0x04	GSS_RETRY_CURRENT_AUTHENTICATION This flag is set by the initiator or the responder to indicate the retry of the current authentication exchange with different credentials. It is valid on messages sent by an initiator or a responder.
0x08	GSS_EXPLICIT_CREDENTIALS This flag indicates that explicit credentials are being used for this GSS-API exchange. It is only valid on messages sent by an initiator. When this flag is set, the corresponding security association (Main mode or Extended mode) MUST have the explicit credentials flag set to TRUE (see section 3.1.1).
0x10	GSS_RESPONDER_AUTH_COMPLETE This flag is set by the responder to indicate that the authentication has completed successfully. It is only valid on messages sent by a responder.

All other flag fields MUST be set to 0 on the initiator and ignored on the responder. For more details on flag semantics, see section [3.1.1](#).

GSS-API_Token (variable): As specified in [\[GSS\]](#) section 3.3. For anonymous authentication, the GSS-API data field has a zero length. This token is obtained from the GSS subsystem as described in [\[GSS\]](#) section 3, with the following differences. The **conf_req_flag** MUST always be specified. When using Kerberos authentication, the **mutual_req_flag** MUST always be specified. When using NTLM, the **mutual_req_flag** MUST NOT be specified. Because TLS allows both mutual as well as one-way authentication, the **mutual_req_flag** reflects the authentication mode as follows: when using mutual authentication in TLS, the **mutual_req_flag** MUST be specified, and when using one-way authentication in TLS, the **mutual_req_flag** MUST NOT be specified.

If the [\[GSS\]](#) subsystem on the responder has successfully completed but the [\[GSS\]](#) subsystem does not return GSS-API_Token data to send back to the initiator, the responder MUST send a 0-byte GSS-API_Token payload with a 0-byte GSS-API_Token.

For Kerberos, the GSS-API_Token is as specified in [\[RFC1964\]](#) section 1. For NTLM, the GSS-API_Token is in the format specified in [\[MS-NLMP\]](#), section [3.1.5.2.1](#) for initiator tokens, and section [3.2.5.2.1](#) and section [3.2.5.2.2](#) for responder tokens. There is no additional GSS encapsulation over what is specified in [\[MS-NLMP\]](#) for the tokens. For TLS, the GSS-API_Token is as specified in [\[RFC5246\]](#) section 7.3. The initiator tokens are the client messages, and the responder tokens are the server messages as defined in [\[RFC5246\]](#) section 7.3. As with NTLM, there is no additional GSS encapsulation. For anonymous, the GSS-API_Token must be 0 bytes. No additional GSS methods are supported.

Simple and Protected GSS-API Negotiation Mechanism (SPNEGO) is not supported in authIP. See section [2.2.3.4](#) for specific GSS method negotiation.

2.2.3.2 Crypto Payload (Payload Type 0x85) Packet

The Crypto payload is used to encrypt other payloads. On the wire, Authenticated Internet Protocol messages MUST contain one and only one Crypto payload, which MUST follow and be adjacent to the Internet Security Association and Key Management Protocol (ISAKMP) header. The only exception is the message that contains the Notify payload with a NOTIFY_DOS_COOKIE notify message type, as specified in [\[MS-IKEE\]](#) section 2.2.6. This message MUST NOT contain the Crypto payload and MUST contain only a Notify payload.

The format of the Crypto payload differs based on whether the encryption flag is set in the flags field of the ISAKMP header, as specified in [\[RFC2408\]](#) section 3.1.

If the encryption flag is set, all other payloads MUST be embedded within the Crypto payload. If the encryption flag is not set, an empty Crypto payload MUST be inserted in front of all the other payloads.

The encryption flag MUST be set on any payload indicated with a HDR* in the payload exchanges. See the figure in section [3.4.7.3](#) for an example. If the payloads are denoted HDR* in the payload exchanges, then the receiver MUST verify that the encryption flag is set.

2.2.3.2.1 Crypto Payload 0x85 Encryption Flag Set

The Crypto payload is constructed in a similar manner as ESP (see [\[RFC4303\]](#) section 2) minus the SPI field.

The Crypto payload type 0x85 with the encryption flag set format is structured as follows.

0	1	2	3	4	5	6	7	8	9	10	11	12	13	14	15	16	17	18	19	20	21	22	23	24	25	26	27	28	29	30	31
seqNUM																															
Initialization_Vector (variable)																															
...																															
Encrypted_Payloads (variable)																															
...																															
Padding (variable)																															

...		
Pad_Length	Next_Payload	Integrity_Checksum_Data (variable)
...		

seqNUM (4 bytes): The **seqNUM** field is a sequence number for the next expected packet number. Sequence number generation is described in section [3.1.1](#).

Initialization_Vector (variable): The length of the **Initialization_Vector** (IV) field MUST equal the block size that is used by the encryption algorithm as specified in [RFC3602](#) section 2.4 and [RFC2451](#) section 2.4. The presence and content of the **Initialization_Vector** depends on the encryption and authentication algorithms used, as specified in [RFC4303](#) section 2.2. Encryption begins immediately after the **Initialization_Vector** and encrypts up to the beginning of the integrity checksum data.

Encrypted_Payloads (variable): A variable-length sequence of encrypted Authenticated Internet Protocol payloads, each payload starting with the generic payload header. The entire payload sequence, including the generic payload headers, MUST be encrypted. This is identical to [RFC4303](#) section 2.3. The **Padding**, **Pad_Length**, and **Next_Payload** are also encrypted, and are therefore conceptually included in the **Encrypted_Payloads**.

Padding (variable): 0 to 255 bytes of padding as required by the encryption algorithm.

Pad_Length (1 byte): The length of the preceding padding. The **Pad_Length** field is located after the variable-length padding; hence, the payload MUST be decoded starting from the end. ESP uses an identical technique for encoding the pad length, as specified in [RFC4303](#) sections 2.4 and 2.5.

Next_Payload (1 byte): The payload type of the first payload in the Encrypted payload sequence that is carried by this Crypto payload.

Integrity_Checksum_Data (variable): As required by the negotiated integrity algorithm (see [RFC4303](#) section 2.8). The integrity checksum data covers the ISAKMP header to the beginning of the integrity checksum data. To compute the checksum successfully, the ISAKMP header length MUST be set to zero.

If one of the following vendor IDs is received, the integrity checksum data size of 12 bytes MUST be used for all algorithms.

Vendor IDs that require 12-byte integrity checksum data:

1E 2B 51 69 05 99 1C 7D 7C 96 FC BF B5 87 E4 61 00 00 00 05

1E 2B 51 69 05 99 1C 7D 7C 96 FC BF B5 87 E4 61 00 00 00 06

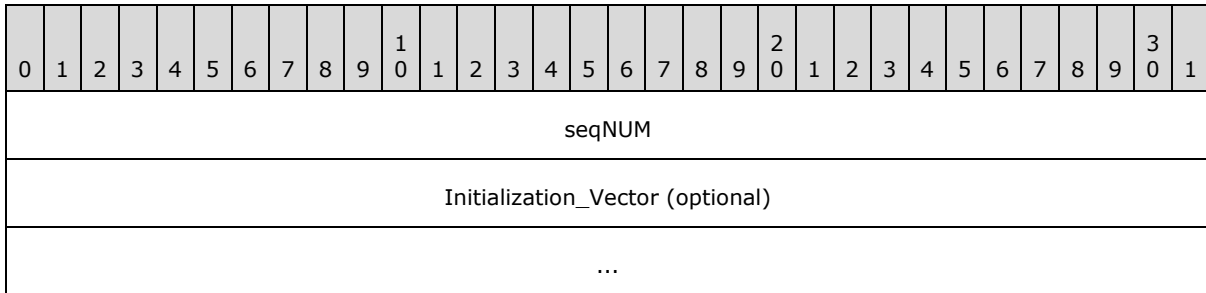
1E 2B 51 69 05 99 1C 7D 7C 96 FC BF B5 87 E4 61 00 00 00 07

Otherwise, the size of the integrity checksum data depends on the negotiated integrity algorithm. The algorithm itself is denoted "hash" in section [3.1](#) and is stored in the **security association database (SAD)**, as described in [RFC4301](#) section 4.4.2. For the negotiated integrity algorithms HMAC-MD5 and HMAC-SHA-1, the integrity checksum data size is 12 bytes. For all other integrity algorithms, the integrity checksum data size is specified in [RFC4868](#) section 2.3.

2.2.3.2.2 Crypto Payload 0x85 Encryption Flag Not Set

If the encryption flag is not set in the flags field of the ISAKMP header, the format is as follows.

The following diagram shows the format of the Crypto Payload 0x85 Encryption Flag Not Set.



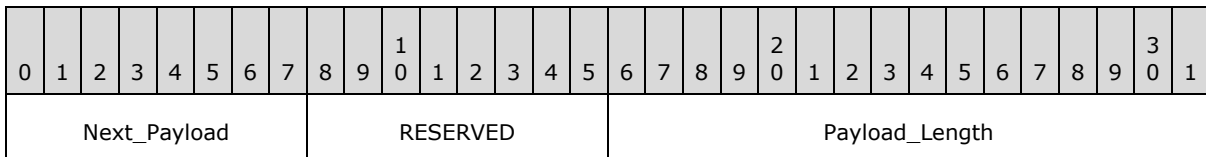
seqNUM (4 bytes): The **seqNUM** field is a sequence number for the next expected packet number. Sequence number generation is specified in section [3.1.1](#).

Initialization_Vector (8 bytes): The **Initialization_Vector** field is an optional field that MAY be present. [<7>](#) The presence of the **Initialization_Vector** is indicated by the length of the Crypto payload (greater than 8 bytes if the **Initialization_Vector** is present; otherwise, 8 bytes).

Note The Crypto payload with the encryption flag not set MUST be followed by a variable-length sequence of unencrypted Authenticated Internet Protocol payloads, each starting with the Generic payload header. In addition, the next payload field of the Generic payload header of the Crypto payload MUST be set to the payload type of the first payload in the clear-text payload sequence that is carried by the Crypto payload.

2.2.3.2.3 Format of the Generic Payload Header for the Crypto Payload

The following diagram shows the format of the Generic payload header for the Crypto payload.



Next_Payload (1 byte): 0 if the encrypted flag is set; otherwise, the next payload.

RESERVED (1 byte): MUST be set to 0. The responder MUST ignore this field.

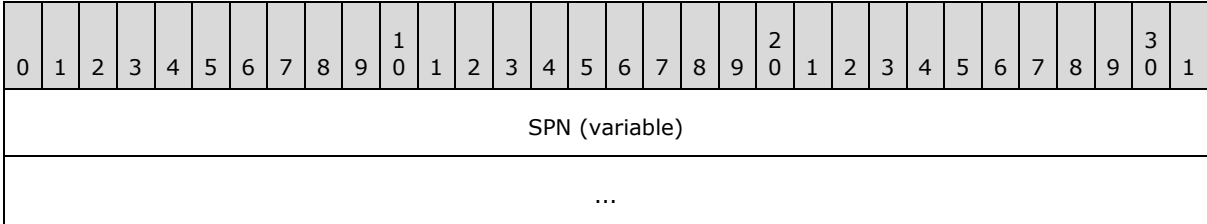
Payload_Length (2 bytes): The value of the payload length is computed as:

4 (the header) + 4 (the sequence number) + the length of the IV in bytes.

2.2.3.3 GSS_ID 0x86 Payload Packet

In IKEv1, the identity information is passed between peers as an attribute of the security association (SA) in the form of an identity payload, as specified in [\[RFC2408\]](#) section 3.8. In the Authenticated Internet Protocol, a separate payload is used to convey identity information in the form of a security principal name (SPN).

The following diagram shows the GSS_ID 0x86 payload packet structure.

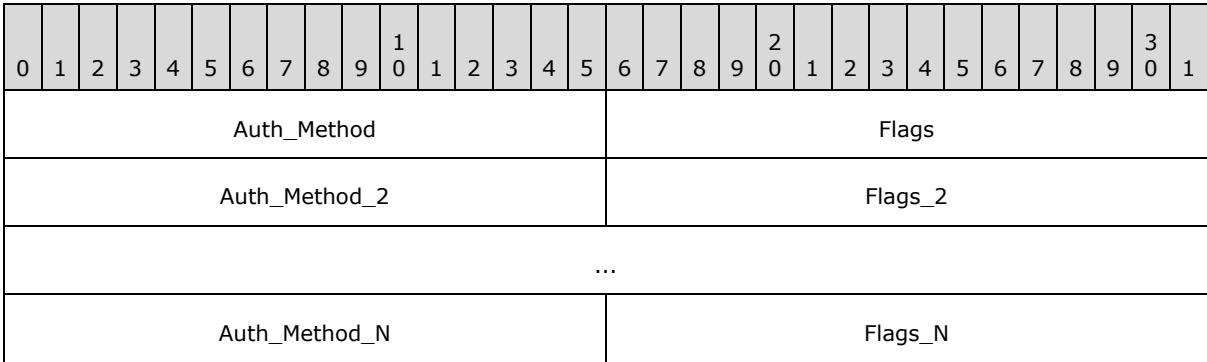


SPN (variable): The GSS-API representation of an SPN, as specified in [\[MS-KILE\]](#) section 3.1.5.12. The SPN sent MUST be a **Unicode string**. The SPN MUST NOT contain the NULL string terminator. All authentication mechanisms MUST use this representation of the SPN.

2.2.3.4 Auth Payload (Payload Type 0x87) Packet

The authenticated payload is used to convey a list of authentication methods to the responder. The number of authentication methods MUST be computed from the payload size in the generic header when decoding the Auth payload. When constructing the Auth payload, the payload size MUST be computed from the number of authentication methods.

The following diagram shows the Auth payload 0x87 packet structure.



Auth_Method (2 bytes): Indicates the proposed authentication method. The following table shows the allowed values.

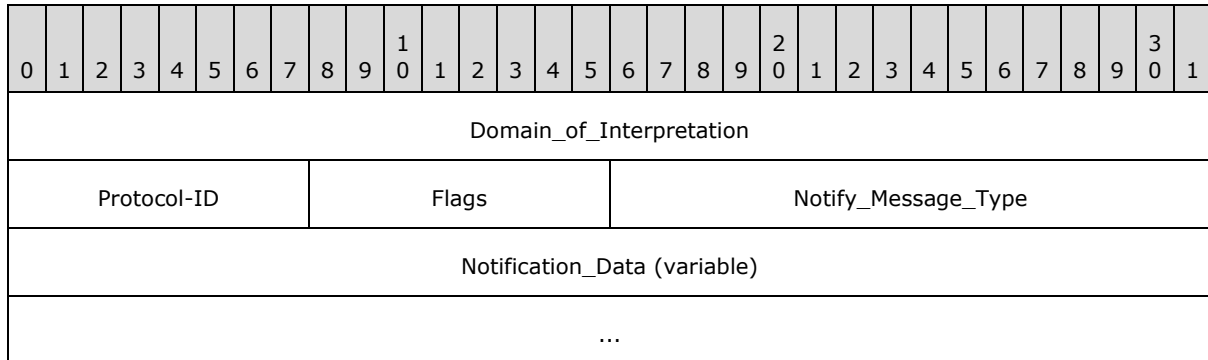
Value	Meaning
0x0002	Kerberos [RFC1964]
0x0003	Anonymous
0x0004	TLS [RFC3546]
0x0005	NTLM [MS-NLMP]

Flags (2 bytes): This field is currently unused. It MUST be set to 0 by the initiator and ignored by the responder.

2.2.3.5 Notify Payload (Payload Type 0x0B) Packet

The notify payload is similar to the IKEv1 notification payload, as specified in [RFC2408](#) section 3.14. However, the field that is referred to as **spiSize** in IKEv1 is referred to as Flags in the Authenticated Internet Protocol; also, the SPI field is absent. The receiver MUST interpret the **spiSize** field as a Flags field if the exchange type for the message is an Authenticated Internet Protocol private exchange type, as specified in section [2.2.1](#).

The following diagram shows the Notify payload 0x0B packet structure.



Domain_of_Interpretation (4 bytes): This field, which specifies the **domain of interpretation (DOI)**, MUST be set to 1 (IPSEC_DOI) as specified in [RFC2408](#) section A.2.

Protocol-ID (1 byte): This field indicates the exchange type to which this notification applies. It MUST be one of the following values.

Value	Meaning
0x01	MM/EM notification
0x02	QM notification

Flags (1 byte): This flag indicates a reliable notify message, which MUST be acknowledged by the peer. If this flag is not set, the recipient MUST NOT acknowledge the notify message. See section [3.1.5.1](#) for additional information. The following table shows the only allowed Flags field.

Value	Meaning
0x01	RELIABLE_NOTIFY_FLAG Reliable notification

All other flags MUST be set to zero by the sender and MUST be ignored by the recipient.

Notify_Message_Type (2 bytes): The Notify_Message_Type identifies the type of notification that is sent with this message. The notify message types are from the private range, as specified in [RFC2408](#) section 3.14.1.

Value	Meaning
0x9C45	EXCHANGE_INFO

Value	Meaning
	This notify message type is used by the negotiation discovery IKE protocol extension, as specified in [MS-IKEE] section 3.7.
0x9C54	NOTIFY_STATUS This notify message type is used to request the peer to delete its state for the corresponding security association (SA), as specified in [MS-IKEE] section 3.8.
0x9C55	NOTIFY_DOS_COOKIE This notify message type is used by the responder under the denial of service protection mode, as specified in [MS-IKEE] section 3.9.
0x9C56	NOTIFY_ACK This notify message type is used to acknowledge a reliable notify message.
0x9C57	NOTIFY_QM_SYNCHRONIZE This notify message type is used to signal the end of the quick mode (QM) phase.
0x9C58	NOTIFY_ACQUIRE This notify message type is used to instruct the peer to negotiate a new main mode security association (MM SA).

Notification_Data (variable): The contents of this field depend on the **Notify_Message_Type** field. The following list describes the field contents for various notify message types:

- NOTIFY_QM_SYNCHRONIZE (0 bytes): No notification data.
- NOTIFY_STATUS (4 bytes): An error code that indicates the type of failure that is triggering the SA deletion notification. The values that are transmitted as error codes are implementation-specific. [<8>](#)
- NOTIFY_ACK (4 bytes): The sequence number of the Crypto payload that carried the Notify payload that is being acknowledged.
- NOTIFY_ACQUIRE: (See section [2.2.3.6](#))

A Notify payload of type NOTIFY_ACQUIRE MUST be followed by two phase-2 Identification payloads, as specified in [\[RFC2407\]](#) section 4.6.2. Each of these phase-2 Identification payloads MUST have the Generic payload header and MUST follow and be adjacent to the Notify payload. The first Identification payload MUST be the initiator Identification payload. The second payload MUST be the peer Identification payload. If any of these conditions is not met, the responder MUST silently discard the packet.

- NOTIFY_DOS_COOKIE (8 bytes): The responder cookie value.

When the NOTIFY_DOS_COOKIE notify message type is used, it MUST be the only payload in the message, and it MUST NOT be within a Crypto payload.

- EXCHANGE_INFO (4 bytes): Flags. The following table describes the flag values.

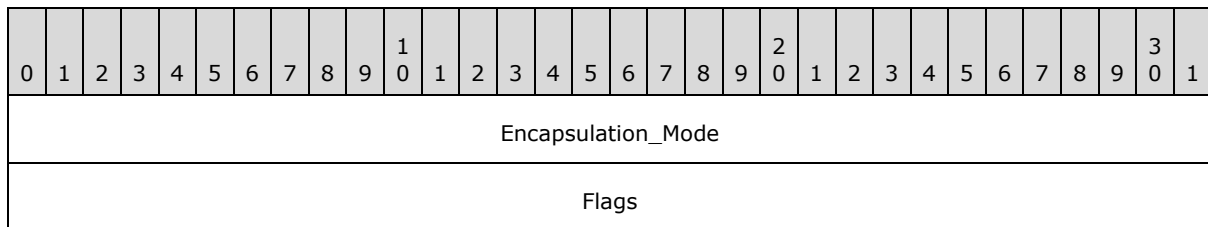
Value	Meaning
0x00000001	IKE_EXCHANGE_INFO_ND_BOUNDARY This flag is used by the negotiation discovery IKE protocol extension, as specified in

Value	Meaning
	[MS-IKEE] section 2.2.6.
0x00000002	IKE_EXCHANGE_INFO_GUARANTEE_ENCRYPTION This flag is used by the negotiation discovery IKE protocol extension, as specified in [MS-IKEE] section 2.2.6.

These flags can be set independently. All other flags MUST be set to zero by the sender and MUST be ignored by the recipient.

2.2.3.6 Notify Payload (Payload Type 0x0B) Notify Acquire Packet

The following diagram shows the Notify Acquire packet structure.



Encapsulation_Mode (4 bytes): This is an encapsulation mode as specified in [\[IANAISAKMP\]](#).

Flags (4 bytes): The following table describes the value of the Flags field.

Value	Meaning
0x00000002	IKE_EXCHANGE_INFO_GUARANTEE_ENCRYPTION This flag is used by the negotiation discovery Internet Key Exchange (IKE) protocol extension, as specified in [MS-IKEE] section 2.2.6.

All other flags MUST be set to zero by the sender and MUST be ignored by the recipient.

3 Protocol Details

3.1 Common Details

This section specifies details common to all roles in AuthIP.

Exchange State Machine

The state diagrams for a single exchange in a negotiation with the initiator and the responder are shown in the following figure.

Responder

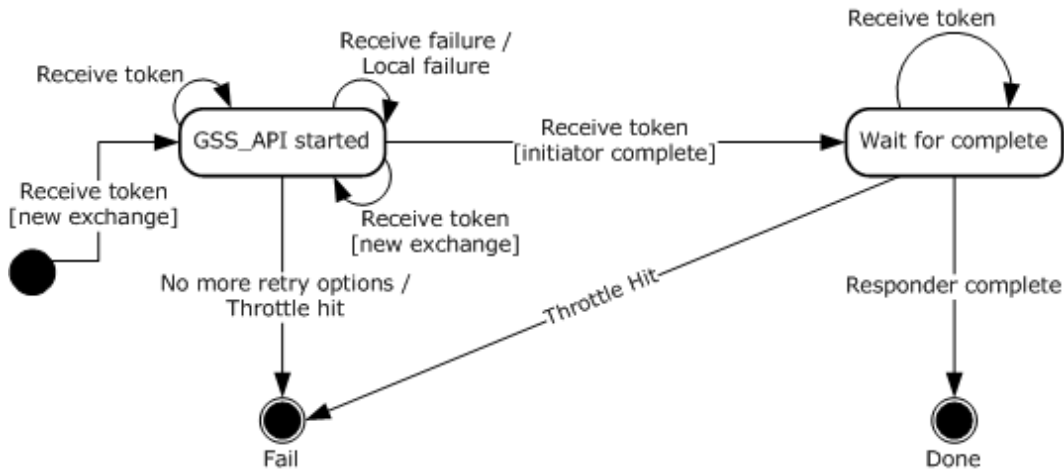


Figure 1: Single exchange state

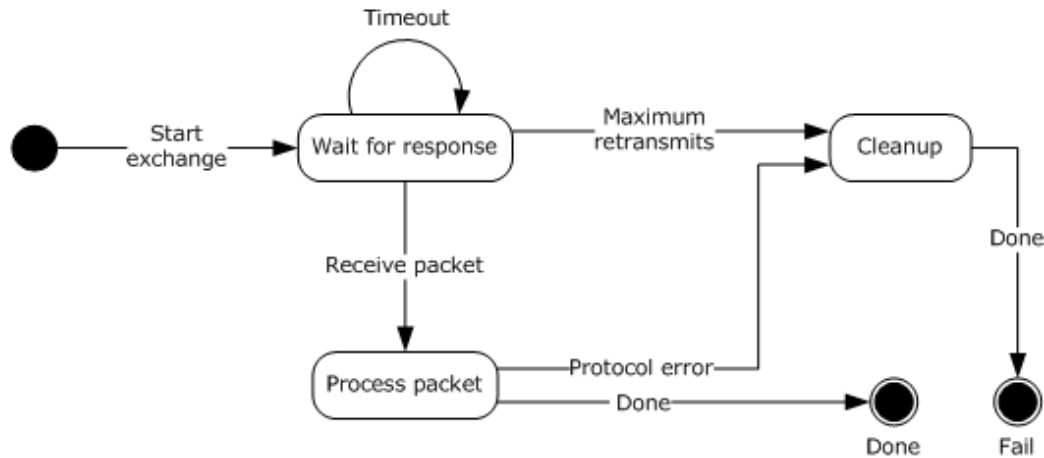
The initiator MUST start a retransmission timer when it sends the first packet of an exchange. If the timer expires before a response is received, the initiator retransmits the message and restarts the timer. After a predefined number of retransmissions, the exchange is aborted. [<9>](#)

Authentication Retry State Machine

The logic for authentication retry is triggered within a negotiation when the current authentication method fails and there are remaining authentication methods (or remaining authentication parameters for the current methods) that can be tried before failing the negotiation. Authenticated Internet Protocol implementations MUST support authentication retry.

The state diagrams for authentication retry for the initiator and responder are shown in the following figure.

Initiator



Responder

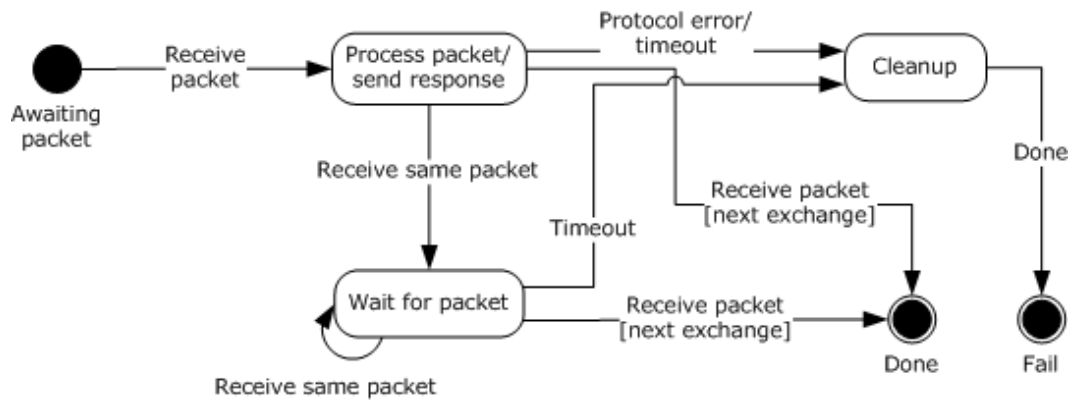


Figure 2: Authentication retry state (initiator and responder)

In processing the protocol error transition, the peer encountering the error **MUST** send a notify message of type NOTIFY_STATUS containing the error code corresponding to the error to the peer. See section [2.2.3.5](#) for details.

moving to the next authentication method. The authentication retry is controlled by flags on the GSS-API payload.

The rules for setting the GSS-API payload flags are as follows:

- The GSS-API flags (GSS_RETRY_CURRENT_AUTHENTICATION and GSS_NEW_GSS_EXCHANGE, as specified in section [2.2.3.1](#)) MUST be set by the initiator to signal that it is retrying the TLS negotiation.
- The GSS-API flag GSS_NEW_GSS_EXCHANGE MUST be set by the initiator when TLS negotiation has failed, to advance to the next authentication method.
- The **Status** field in the GSS-API payload MUST be set to a nonzero value by the responder if no other TLS credentials are acceptable. When this field is set, the initiator MUST advance to the next authentication method.
- The **Status** field in the GSS-API payload MUST be set to a nonzero value and the GSS_RETRY_CURRENT_AUTHENTICATION flag MUST be set by the responder to instruct the initiator that it MUST retry TLS with a different credential, if available. When the initiator retries TLS with a different credential, it MUST set the **Status** field by using the nonzero value that is received from the responder in the GSS-API payload.

Notation used to describe common details and specific roles in the remainder of section 3

This specification uses the same notation that is specified in [\[RFC2409\]](#) section 3.2, with a few additions that are noted as "additional notation" in this topic:

- HDR: An ISAKMP header whose exchange type is the method. When written as HDR*, it indicates payload encryption.
- Security Association (SA): An SA negotiation payload that embeds one or more Proposal and Transform payloads. See [\[RFC2409\]](#) section 3.4.
- CKY-I and CKY-R: The initiator cookie and responder cookie, respectively, from the ISAKMP header. These are used together with initiator and responder IP addresses as a unique key for looking up each session.
- g^{xy} : The Diffie-Hellman shared secret.
- $g(qm)^{xy}$ (additional notation): The Diffie-Hellman secret in the quick mode negotiation phase.
- KE: The Key Exchange payload that contains the public information that is exchanged in a Diffie-Hellman exchange.
- Nx: The Nonce payload. x can be "I" or "r" for the ISAKMP initiator and responder, respectively. $x(qm)$ is the quick-mode nonce.
- IDx: The Identity payload for "X". x can be: "I" or "r" for the ISAKMP initiator and responder, respectively. The Identity payload format for the Internet DOI is specified in [\[RFC2407\]](#) section 4.6.2.
- hash(msg) (additional notation): The negotiated hash algorithm for the main mode security association (MM SA). Msg is the quantity to hash.
- sha1 (additional notation): The SHA-1 hash function, as specified in [\[FIPS180\]](#). [\[SHA256\]](#) is used until the hash function has been negotiated.

- prf(key, msg): The keyed pseudorandom function (PRF) that is used to generate a deterministic output that appears pseudorandom. PRF is used both for key derivations and for authentication (for example, as a keyed MAC). PRF is implemented as an HMAC of the negotiated hash algorithm, as defined in [\[RFC2104\]](#).
- SKEYID: A string that is derived from a secret that is known only to the active players in the exchange.
- SKEYID_e: The **keying material** that is used by the ISAKMP SA to protect its messages.
- SKEYID_a: The keying material that is used by the ISAKMP SA to authenticate its messages.
- SKEYID_d: The keying material that is used to derive keys for non-ISAKMP SAs.
- SKEYID_em: The keying material that is used by AuthIP to authenticate extended mode negotiation messages.
- Notify (additional notation): The ISAKMP Notify payload as specified in [\[RFC2408\]](#) section 3.14.
- Authx (additional notation): The authentication proof for x, where x is either the first or second authentication and has a value of 1 to 4. It is embedded in a Hash payload.
- Auth payload (auth): The payload that is constructed by looking up the peer authentication database (PAD) and the **security policy database (SPD)**. The Auth payload contains the authentication methods that are valid for this negotiation.
- VID (additional notation): The Vendor ID payload.
- A-KDF(Z, OtherInfo, keydatalen) (additional notation): Invoke the Key Derivation Function (KDF), as specified in [\[SP800-56A\]](#). The Key Derivation Function uses the negotiated main mode hash function as its hash function.
- Crypto-ID (additional notation): A 16-bit number that corresponds to the negotiated main mode encryption algorithm. The table that maps the algorithm identifiers to the corresponding numbers is defined in [\[RFC2409\]](#) Appendix A.
- GSS-APIsecret, GSS-APIsecret_em (additional notation): The session key that is obtained from a successful GSS-API exchange in main mode (MM) and extended mode (EM), respectively, as specified in [\[GSS\]](#).
- hashLength, cryptLength (additional notation): The length, in bytes, of the key for the negotiated MM SA authentication and encryption algorithms. [<10>](#)
- ipsechashLength, ipseccryptLength (additional notation): The length, in bytes, of the key for the QM SA authentication and encryption algorithms.
- #n (additional notation): Numbers the packet within a series of exchanges for reference. This information is not on the wire.
- [x]: Indicates that x is optional.

3.1.1 Abstract Data Model

This section describes a conceptual model of possible data organization that an implementation maintains to participate in this protocol. The described organization is provided to facilitate the explanation of how the protocol behaves. This document does not mandate that implementations

adhere to this model as long as their external behavior is consistent with the behavior that is described in this document.

The flags bit semantics used by this document are as follows: For a flag, its "value" signifies a mask which, when its bitwise logical AND with the flags field is computed, yields either a zero value (all zero bits) if the flag is unset (set to FALSE), and a nonzero value otherwise. For example, a flag mask/value of 0x01 signifies that the bitwise logical AND of a single-byte flag field with 0x01 is zero if and only if the flag is set to FALSE. Assuming no other flag masks/values for this field, then, both 0x00 and 0x01 are valid values for this single-byte flag field--the former corresponding to the flag being unset, and the latter to the flag being set.

The main data elements that are required by any implementation are:

- Main mode security association (MM SA) database: A database that contains the operational state for each MM SA. The entry for each MM SA contains the following data elements:
 - Current role: type: flag. Used to store the current role (initiator or responder) for use in a key generation algorithm as described in [3.1.7.4](#).
 - Current state: type: **DWORD**. Stores the current message number within a negotiation, for use in header construction as described in [2.2.1](#).
 - Per-negotiation timers: type: System timer. Authentication protocol timers as described in [3.1.2](#).
 - Sequence numbers: type: **DWORD**. Stores sequence numbers for main mode (MM), quick mode (QM), extended mode (EM), and notification exchange types. The sequence numbers MUST start at zero and MUST be incremented for each exchange. The sequence number is used as the **seqNUM** field of the Crypto payload.
 - Cryptographic parameters: type: array of {Authentication attribute (type: **DWORD**)}. Stores Cryptographic parameters for the MM SA as described in the attribute class table in [\[RFC2409\]](#) appendix A. The attributes used are: encryption algorithm, hash algorithm, group description, life type, and life duration. In addition, a set of one or more authentication methods (defined as in the same table) is included.
 - Auth methods: type: array of {AuthMethodType (type: **DWORD**)}. A set of one or more authentication methods (as defined in [\[RFC2409\]](#) Appendix A and section [1.7](#)) for main mode (MM).
 - Auth methods (EM): type: array of {AuthMethodType (type: **DWORD**)}. A set of one or more authentication methods (as defined in [\[RFC2409\]](#) Appendix A and section [1.7](#)) for extended mode (EM).
 - QM Pointers: type: array of indexes into the SAD described below. A list of indexes for SAD entries corresponding to QM SAs established under the protection of the MM SA.
 - NAT traversal state. See [\[RFC3947\]](#) section 3.2. The state contains a **BOOLEAN**: *isNatPresent*. This MUST be initialized to FALSE. It is set to true if NAT is detected as described in [\[RFC3947\]](#) section 3.2.
 - Negotiation retransmission timer context: This timer context keeps track of the packet being retransmitted, and how many retransmissions have currently been sent.
 - Request Non-notify Message pending Queue: When there is an outstanding notify request any non-notify request generated will be queued here until an ACK arrives (see section [3.1.7.5](#)).

- DoS protection mode bit: A **BOOLEAN** value indicating whether the host is in DoS protection mode (see section [3.1.7.6](#)).
- Explicit credentials MM: A **BOOLEAN** value indicating whether explicit credentials were used in the MM negotiation (see section [3.8.7.1](#)).
- Explicit credentials EM: A **BOOLEAN** value indicating whether explicit credentials were used in the EM negotiation (see section [3.8.7.1](#)).
- Impersonation active MM: A **BOOLEAN** value indicating whether Impersonation is enabled in the MM negotiation (see section [2.2.3.1](#)).
- Impersonation active EM: A **BOOLEAN** value indicating whether Impersonation is enabled in the EM negotiation (see section [2.2.3.1](#)).
- ImpersonationHandle: A handle {**DWORD**} that represents the user corresponding to this MM SA.
- Connection state table: Stores a set of connection entries. This table manages the connection state necessary to perform an **authFW** mode. These connection entries correspond to active TCP/UDP/ICMP, or protocol-only connections.

The possible connection entries are:

- V4 TCP/UDP state entry: {IPv4 source address {**DWORD**}, IPv4 destination address {**DWORD**}, IP protocol {**DWORD**}, source port {**DWORD**}, destination port {**DWORD**}.
- V6 TCP/UDP state entry: {IPv6 source address {16 bytes}, IPv6 destination address {16 bytes}, IP protocol {**DWORD**}, source port {**DWORD**}, destination port {**DWORD**}.
- V4 ICMP state entry: {IPv4 source address {**DWORD**}, IPv4 destination address {**DWORD**}, IP protocol {**DWORD**}, ICMP type {**DWORD**}, ICMP code {**DWORD**} [\[RFC792\]](#).
- V6 ICMP state entry: {IPv6 source address {16 bytes}, IPv6 destination address {16 bytes}, IP protocol {**DWORD**}, ICMP type {**DWORD**}, ICMP code {**DWORD**} [\[RFC792\]](#).
- V4 protocol-only state entry: {IPv4 source address {**DWORD**}, IPv4 destination address {**DWORD**}, IP protocol {**DWORD**}.
- V6 protocol-only state entry: {IPv6 source address {16 bytes}, IPv6 destination address {16 bytes}, IP protocol {**DWORD**}.

Every connection state entry also includes:

- *IsAuthenticatedFirewallConnection* Type: **BOOLEAN**. Indicates whether the connection uses [Authenticated Firewall Mode \(section 3.10\)](#).
- *AuthFWAuthorized* Type: **BOOLEAN**. In the case of an Authenticated Firewall Mode connection, indicates whether an authenticated packet has been received (see section [3.10.5.1](#)).
- *PeerIsNegotiationDiscoveryCapable* Type: **BOOLEAN**. Indicates whether the peer associated with the connection has indicated support for Negotiation Discovery (See [\[MS-IKEE\]](#), section [3.7](#)).
- *ImpersonationHandle*: Type {**DWORD**} A handle that represents the user corresponding to the MM SA associated with the connection.

- *IsImpersonationConnection*: Type: **BOOLEAN**. Indicates whether impersonation was used in the EM negotiation for the MM SA associated with the connection.

The MM SA is indexed by the local and peer IP address and the initiator and responder cookies that are found in the ISAKMP header, as in IKEv1.

- Security policy database (SPD): The SPD and its management operations are specified in [\[RFC4301\]](#) section 4.4.1. The SPD that is referred to in this specification contains rules that describe whether and how IPsec protection is applied to inbound or outbound IP traffic. The SPD is looked up by using tuples that contain flow information for the packet. The encapsulation type is already a part of the SPD. This specification adds two new encapsulation values to the encapsulation type. See section [3.10.4.2](#).

This specification also adds a policy option to enable impersonation, which is configurable per-SPD entry. The corresponding state consists of two Boolean values: *RequireImpersonationMM* and *RequireImpersonationEM*.

- The EM authentication SPD adds local and remote ports to the SPD selector. See [\[RFC4301\]](#), section 4.4.1.1. Associated with each selector are the EM Auth methods. These are an array of {AuthMethodType (type: **DWORD**)}, which is a set of one or more authentication methods (as defined in [\[RFC2409\]](#) Appendix A and section [1.7](#)) for extended mode (EM). Each authentication method's specific configuration is specified in that authentication method's documentation. For instance, 1-way certificate authentication versus mutual certificate authentication configuration is covered in [\[RFC5246\]](#).
- Peer authentication database (PAD): The PAD and its management operations are specified in [\[RFC4301\]](#) section 4.4.3. The PAD that is referred to in this specification contains rules that describe whether and how the Authenticated Internet Protocol should negotiate SAs with a remote peer. The PAD is looked up by using tuples that are composed of local and remote IP addresses.

This specification adds:

- Allow Explicit credentials MM: Type: **BOOLEAN**. Indicates whether the use of explicit credentials is permitted during main mode security association (MM SA) negotiation.
- Allow Explicit credentials EM: Type: **BOOLEAN**. Indicates whether the use of explicit credentials is permitted during extended mode (EM) SA negotiation.
- Security association database (SAD): The SAD contains the parameters of each QM SA. The SAD and its management operations are specified in [\[RFC4301\]](#) section 4.4.2.

This specification adds:

- *IsAuthenticatedFWSA*: Type: **BOOLEAN**. This flag, when set, indicates that the SA is an authFW mode SA.
- *ImpersonationHandle*: Type: **DWORD**. A handle to the impersonated identity associated with the selector of each SAD entry. See [\[RFC4301\]](#) section 4.4.1.1.
- The NAT traversal state in the MM SA is propagated from the MM SA to all SAD entries established using that MM SA.

3.1.2 Timers

The following timers are used by the Authenticated Internet Protocol: [<11>](#)

- Negotiation retransmission timer (for each main mode security association): Triggers a message retransmission by the initiator.
- Notify retransmission timer (for each MM SA): Triggers a Notification payload retransmission.
- Authentication retry timer (for each MM SA): Triggers the authentication retry.
- Responder time-out timer (for each MM SA): Controls how long the responder should wait for a message from the initiator.
- MM SA lifetime (for each MM SA): The MM SA lifetime is negotiated between the peers.
- NAT-T keep-alive timer (for each MM SA): This timer doesn't affect any MM SA state. This timer only controls sending the NAT-T keep alive packet, as specified in [\[RFC3948\]](#) section 4.
- Quick mode (QM) rekey timer (for each MM SA): This timer is used during QM rekey.
- Quick mode security association (QM SA) lifetime (for each QM SA): The lifetime for QM SAs is specified in bytes or seconds. After the lifetime of bytes or seconds expires, the IPsec implementation **MUST** start a new QM exchange. The Authenticated Internet Protocol then acts as the initiator for the rekey.
- Per-Connection state entry timer: All entries in the connection state table (except the TCP state entries) each have their own timer. This timer triggers connection entry state deletion.

3.1.3 Initialization

The following flags **MUST** be initialized to FALSE in the MM SA database:

- Explicit credentials MM
- Explicit credentials EM
- Impersonation active MM
- Impersonation active EM

The ImpersonationHandle **MUST** be set to 0.

3.1.4 Higher-Layer Triggered Events

3.1.4.1 IP Traffic Match SPD Protect-using-IPsec Rule

When inbound or outbound packets trigger AuthIP negotiation based on standard Ipsec processing rules ([\[RFC4301\]](#) section 5), the protocol acts as the initiator for this negotiation and sends message #1 of the first main mode (MM) exchange (section [3.2.4](#)). The initiator **MUST** create a main mode security association (MM SA) entry in its **main mode security association database (MMSAD)** containing encryption algorithm, hash algorithm, group description, life type, and life duration values before sending message #1.

In the new MMSAD entry, the initiator **MUST** also copy the values "Require Impersonation MM" and "Require Impersonation EM" from the SPD to the Impersonation active MM and Impersonation active EM flags, and copy the ImpersonationHandle value representing the user that generated the traffic to ImpersonationHandle.

3.1.4.2 Explicit IPsec Negotiation Request

The Authenticated Internet Protocol negotiation may be explicitly triggered by the user or administrator prior to packets being sent or received. The protocol then acts as the initiator for this negotiation. This trigger is a local higher layer triggering event and does not otherwise affect SA negotiation. When triggered this way, the initiator **MUST** create a main mode security association (MM SA) entry in the main mode security association database (MMSAD) containing encryption algorithm, hash algorithm, group description, life type, and life duration values before sending message #1 (section [3.2.4](#)).

3.1.5 Processing Events and Sequencing Rules

Authenticated Internet Protocol negotiations are tracked according to the same rules that are specified for IKE negotiations, as specified in [\[RFC2409\]](#). Each Authenticated Internet Protocol negotiation is uniquely identified by the pair of the initiator cookie and responder cookie (plus UDP ports and IP addresses of each peer). The cookies are transmitted in the ISAKMP header, which begins every message.

Within an Authenticated Internet Protocol negotiation, quick mode (QM) exchanges are demultiplexed by using the **message ID** field of the IKE header. The **message ID** field **MUST** be zero during main mode (MM) and **MUST** be one during extended mode (EM).

All Authenticated Internet Protocol exchanges follow the retransmission state transitions that are presented in section [3.1](#).

3.1.5.1 Receiving a Reliable Notify Message

When an Authenticated Internet Protocol peer receives a Notify message with **RELIABLE_NOTIFY_FLAG** set (as specified in section [2.2.3.5](#)), it **MUST** send an acknowledgment consisting of a Notify message of type **NOTIFY_ACK**. The data of the Notify message is initialized to contain the sequence number from the Crypto header of the message being acknowledged.

After processing and acknowledging the notify, the recipient of the notify **MUST NOT** delete the MM SA until QM delete processing has been completed for all QMs formed on this MM SA. The MM SA **MUST NOT** be used to establish any new QM SAs. Moreover, the QM SAs associated with the MM SA **MUST NOT** be deleted until deletion is triggered by other protocol events, as specified in [\[RFC2409\]](#) section 5.5. Once all the QM SAs associated with the MM SA have been deleted, the MM SA **MUST** be deleted.

3.1.5.2 Receiving an Unreliable Notify Message

When an Authenticated Internet Protocol peer receives a Notify message with **RELIABLE_NOTIFY_FLAG** not set (as specified in section [2.2.3.5](#)) then it **MUST** handle it exactly like a reliable notify (section [3.1.5.1](#)) except for not sending back an acknowledgment.

3.1.5.3 Receiving a Reliable Notify Acknowledgement

When an Authenticated Internet Protocol peer receives a Notify message of type **NOTIFY_ACK** (see section [2.2.3.5](#) for verification details), it **MUST** check to see if any Notify messages are queued waiting for the notify ACK to arrive. If so, the first non-Notify message in the Request Non-notify Message pending Queue is sent at this time (section [3.1.7.5](#)).

3.1.6 Timer Events

3.1.6.1 Negotiation Retransmission Timer

The negotiation retransmission timer is started by the initiator when it sends a message. Upon expiration of this timer, the initiator MUST retransmit the message and increment the retransmission counter. After seven retransmissions (tracked by the Retransmission timer context of the MM SA (section [3.1.1](#)), the initiator MUST delete the state for the corresponding MM SA.

3.1.6.2 Notify Retransmission Timer

The notify retransmission timer is started by the initiator or the responder when it sends a Notify payload within a message. Upon expiration of this timer, the initiator MUST retransmit the Notify payload and increment the retransmission counter. After 7 retransmissions, the initiator MUST delete the state for the corresponding main mode security association (MMSA). During AuthIP shutdown, however, the delete notification messages (section [3.1.7.3](#)) are retransmitted at most once if not acknowledged.

3.1.6.3 Responder Time-Out Timer

This timer MUST be started by the responder upon receipt of a message from the initiator if the responder expects a subsequent message from the initiator. Upon expiration of this timer, the responder MUST delete the corresponding main mode security association (MM SA).

3.1.6.4 MM SA Lifetime

The main mode security association (MM SA) lifetime is negotiated between peers. Upon expiration of this timer, the initiator or responder MUST delete the corresponding MM SA.

3.1.6.5 QM Rekey Timer

This timer starts at the beginning of a quick mode (QM) rekey. Upon expiration, any other quick mode security associations (QM SAs) MUST be deleted.

3.1.6.6 Connection State Timer Events

On per-connection timer expiry, the connection state for the timer's associated connection MUST be deleted from the connection state table.

TCP connection state maintenance is described in [\[RFC793\]](#) section 3.4.

3.1.7 Other Local Events

3.1.7.1 IP Address Deletion

The Authenticated Internet Protocol reacts to IP address Plug and Play notifications. If an IP address on the system is deleted, the Authenticated Internet Protocol MUST delete all corresponding SAs and send a Notify payload of Notify type NOTIFY_STATUS ([2.2.3.5](#)) to the peer for each deleted SA. This packet MUST be constructed as follows:

- **HDR:** The ISAKMP header MUST be identical to the IKE Informational packet, as specified in [\[RFC2409\]](#) section 5.7, and the exchange type MUST be 246 (NOTIFY exchange type).
- **Notify (Status):** This notify MUST have the RELIABLE_NOTIFY_FLAG, as specified in section [2.2.3.5](#), set to TRUE.

3.1.7.2 AuthIP Shutdown

Upon shutdown of the AuthIP protocol implementation, the Authenticated Internet Protocol MUST send delete notification messages (Notify payload of Notify type NOTIFY_STATUS) for all SAs (section 2.2.3.5) and starts a retransmission timer (section 3.1.6.2)

This packet MUST be constructed as follows:

- **HDR:** The ISAKMP header MUST be identical to the IKE Informational packet, as specified in [\[RFC2409\]](#) section 5.7, and the exchange type MUST be 246 (NOTIFY exchange type).
- **Notify (Status):** This notify MUST have the RELIABLE_NOTIFY_FLAG, as specified in section 2.2.3.5, set to TRUE.

3.1.7.3 IPSec Policy Change

Upon policy change, the Authenticated Internet Protocol MUST revalidate all SAs against the new policy, delete SAs that do not match the new policy, and send a delete notification to the peer for each such SA (section 2.2.3.5).

This delete notification packet MUST be constructed as follows:

- **HDR:** The ISAKMP header MUST be identical to the IKE Informational packet, as specified in [\[RFC2409\]](#) section 5.7, and the exchange type MUST be 246 (NOTIFY exchange type).
- **Notify (Status):** This notify MUST have the RELIABLE_NOTIFY_FLAG, as specified in section 2.2.3.5, set to TRUE.

3.1.7.4 AuthIP Key Material Generation

A number of Authenticated Internet Protocol exchanges involve the generation of keying material. Each AuthIP peer MUST generate keying material as follows.

Notation:

This specification uses SKEYID_d, SKEYID_a, and SKEYID in the same manner as described in [\[RFC2409\]](#) section 5.

A-KDF refers to the key derivation function specified in [\[SP800-56A\]](#). The output of the [\[SP800-56A\]](#) KDF is the bit string DerivedKeyingMaterial of length ByteLength bytes.

"|" signifies concatenation of information. For example, X | Y is the concatenation of X with Y, as specified in [\[RFC2409\]](#).

```
Define Function: OtherInfo (pubInfo, privInfo) as:  
AlgorithmID|PartyUInfo|PartyVInfo|pubInfo|privInfo
```

The function **OtherInfo** takes as input (pubInfo, privInfo), and performs the given concatenation. *AlgorithmID*, *PartyInfo*, and *PartyVInfo* are known externally as defined below, and hence not passed directly to the function. For instance, when run for SKEYID:

{ } indicates function invocation.

```
COMPUTE SKEYID as A-KDF  
(Z, {OtherInfo} (SuppPubInfo-SKEYID, SuppPrivInfo-SKEYID),
```



```
hashLength)
```

This substitutes SuppPubInfo-SKEYID into pubInfo and SuppPrivInfo-SKEYID into privInfo, and then executes the **OtherInfo** concatenation. Hence the variables *pubInfo* and *privInfo* themselves are function parameters, whose values are filled in by the caller.

```
Set AlgorithmID to Crypto-ID
Set PartyUInfo to CKY-I
Set PartyVInfo to CKY-R

SuppPubInfo-SKEYID = Ni|Nr
SuppPubInfo-SKEYID_d = Ni|Nr|0x00
SuppPubInfo-SKEYID_a = Ni|Nr|0x01
SuppPubInfo-SKEYID_e = Ni|Nr|0x02

Set SuppPrivInfo-SKEYID to GSS-APIsecret
Set SuppPrivInfo-SKEYID_em to GSS-APIsecret_em
Set SuppPrivInfo-SKEYID_d to SKEYID

SuppPrivInfo-SKEYID_a = SKEYID_d|SKEYID
SuppPrivInfo-SKEYID_e = SKEYID_a|SKEYID

If DH is used then
  set Z to g^xy
Else
  set Z to a zero-length byte string
END IF

COMPUTE SKEYID_d as A-KDF (Z, {OtherInfo} (SuppPubInfo-SKEYID_d,
  SuppPrivInfo-SKEYID_d), hashLength)
COMPUTE SKEYID_a as A-KDF (Z, {OtherInfo} (SuppPubInfo-SKEYID_a,
  SuppPrivInfo-SKEYID_a), hashLength)
COMPUTE SKEYID_e as A-KDF (Z, {OtherInfo} (SuppPubInfo-SKEYID_e,
  SuppPrivInfo-SKEYID_e), max(hashLength, cryptLength))
COMPUTE SKEYID_em as A-KDF (Z, {OtherInfo} (SuppPubInfo-SKEYID,
  SuppPrivInfo-SKEYID_em), hashLength)

SuppPubInfo-IPsecEncryptKey = MessageId|SPI|Ni(qm)|Nr(qm)|SKEYID_d

if EM exchanges THEN
  SuppPrivInfo-IPsecEncryptKey = Ni(mm)|Nr(mm)|SKEYID_em
ELSE
  Set SuppPrivInfo-IPsecEncryptKey = zero-length byte string
END IF

COMPUTE IPsecEncryptKey as A-KDF (Z(qm),
  OtherInfo(SuppPubInfo-IPsecEncryptKey,
  SuppPrivInfo-IPsecEncryptKey), ipsechashLength+ipseccryptLength)
COMPUTE Auth1 as prf(SKEYID,
  hash(#4|( #3|sha256(#2|sha256(#1))))|0x01)
COMPUTE Auth2 as prf(SKEYID, hash(#4|hash(#3|sha256(#2|sha256(#1))))|0x02)
```

For the first two payloads, the cumulative hash for Auth1 MUST start with a hard-coded sha256 (as specified in [\[SHA256\]](#)) because a hash method has not yet been negotiated between the peers. Starting with payload #3, the peers MUST use the negotiated hash algorithm.

Extended mode (EM) also uses the following hashes.

```
COMPUTE Auth3 as prf(SKEYID_em, hash(#12|hash(#11|hash(#10|
    hash(#9|hash(#8|hash(#7)))))) |Auth1
COMPUTE Auth4 as prf(SKEYID_em,
    hash(#12|hash(#11|hash(#10|hash(#9|hash(#8|hash(#7)))))) |Auth2
```

The length of the hash chains for computing Auth3 and Auth4 depends on the number of messages in the exchange. Each peer MUST hash all the IKE payloads as plaintext, for example, unencrypted.

The quick mode security association (QM SA) authentication key MUST be set to the first part of IPsecEncryptKey (up to ipsechashLength bytes). The QM encryption key MUST be set to the remainder of IPsecEncryptKey.

DES-CBC [\[RFC2405\]](#) and TripleDES-CBC [\[RFC2451\]](#) require the parity and weak key checks. This formatting MUST be applied to SKEYID_e when using these algorithms.

For DES-CBC and TripleDES-CBC, the key MUST be computed in the following way:

1. Truncate the key to 8 bytes (DES-CBC) or 24 bytes (TripleDES-CBC).
2. For each byte, if the number of bits set to one in the byte is even, adjust the least significant bit so that the number of bits set to one is odd.

3.1.7.5 Sending QM Notify Messages

Each Authenticated Internet Protocol peer MUST allow only one outstanding Notify message affiliated with a QM SA (section [2.2.3.5](#)) at a time. The initiator MUST NOT send a Notify message until it has received a response to all previous messages. This behavior does not apply to Notify messages that do not have the Reliable message flag set, but MUST include Notify messages that have the Reliable message flag set.

If the sender of a Notify message generates one or multiple Notify messages while it waits for a response to a previously sent message, each message MUST be queued in the Request Non-notify Message pending Queue (section [3.1.1](#)) until all preceding Notify messages are acknowledged (section [3.1.5.3](#)). If there are no outstanding notifies the packet MUST be sent immediately.

3.1.7.6 Enter DoS Protection Mode

When the number of SAs in a state other than Quick Mode Initiator Done or Quick Mode Responder Done states is at least 500, the host MUST enter DoS protection mode. This mode is used by the responder to handle denial of service protection attacks. While the host is in DoS protection mode, it MUST behave as specified in [\[MS-IKEE\]](#) section 3.9.

3.1.7.7 New Connection Initiation

Whenever a new connection is initiated, a new entry MUST first be created and stored in the connection state table (see section [3.1.1](#)). The **IsAuthenticatedFirewallConnection** and **AuthFWAuthorized** flags MUST be set to FALSE. The type of the new entry MUST match the IP version (IPv4 or IPv6) and the protocol (TCP/UDP, ICMP, or protocol-only) of the new connection.

When an entry is created for a non-TCP connection, a per-connection timer MUST be set, as specified in section 3.10.4. The IsImpersonatedConnection flag MUST be set to FALSE. ImpersonationHandle MUST be set to a locally unique ID value that represents the user who initiated the connection. This ID value MUST stay constant for the given user for each new connection initiated by the user.

The host determines which SA to use to secure the traffic as specified in [RFC4301] section 4.4.2.2. If the SA is an authFW SA (that is, if IsAuthenticatedFWSA is set to TRUE for the SA), then the **IsAuthenticatedFirewallConnection** and **AuthFWAuthorized** flags MUST be set to TRUE.

The connection state tracking timer for the connection MUST be reset back to its default time every time a packet is sent or received on that connection.

3.2 AuthIP Main Mode Initiator Role

3.2.1 Abstract Data Model

See section 3.1.1.

3.2.2 Timers

On receiving the new MM request, the responder MUST set the Current role to responder. See sections 3.1.1 and 3.1.2.

3.2.3 Initialization

See section 3.2.4.

3.2.4 Higher-Layer Triggered Events

When the higher level event described in section 3.1.4 is triggered, it MUST create a main mode security association (MM SA) in its main mode security association database (MMSAD) containing encryption algorithm, hash algorithm, group description, life type, and life duration values and send the first main mode exchange packet with the following form:

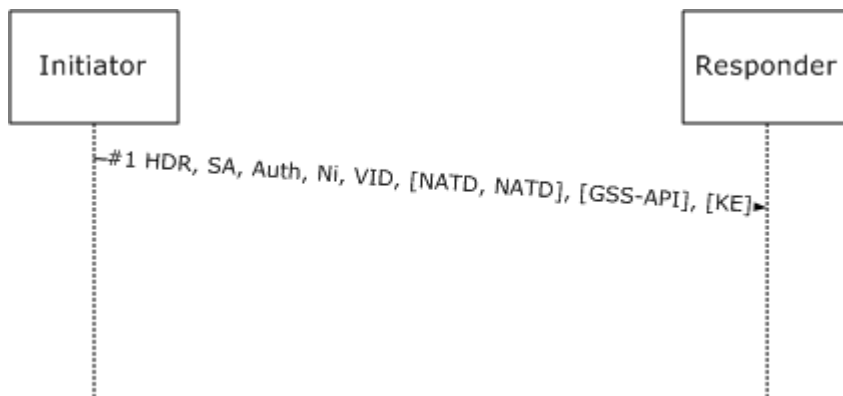


Figure 4: Main Mode First Exchange Packet

The packet MUST be constructed as follows:

- HDR: The ISAKMP header MUST be identical to the first IKE phase 1 initiator header (see section [2.2.1](#)), except that the exchange type MUST be 243 (main mode exchange type). The Encrypted flag SHOULD NOT be set.
- The remaining payloads MUST follow a non-encrypted Crypto payload. If an error has occurred at this stage or before, the responder MUST silently discard the message.
- Security association (SA): The SA payload MUST be determined by looking up the PAD and the SPD, and constructed in an identical way to the IKE SA payload, as specified in [RFC2408](#) section 3.4. If a Diffie-Hellman exchange is required by the authentication method (for example, the authentication method is anonymous or the NTLM authentication protocol), the Diffie-Hellman group MUST be the same for all proposals in the SA payload. If a Diffie-Hellman exchange is not required, then the DH attribute in the SA (see [RFC2409](#) Appendix A, attribute classes) MUST be 0, and the KE payload MUST NOT be present.
- Auth payload (auth): The Auth payload MUST be constructed by looking up the PAD and the SPD to determine the list of authentication methods that are valid for this negotiation, and including exactly this list of methods.
- Ni: The initiator Nonce payload MUST be constructed as specified in [RFC2408](#) section 3.13. Nonces MUST be cryptographically strong random numbers generated by using a [FIPS140](#)-compliant random-number generator.
- VID: A sequence of Vendor ID payloads that indicate the capabilities supported. These payloads MUST be constructed as specified in [RFC2408](#) section 3.16.
- NATD: Nat discovery payloads. If the IP addresses of the authIP peers are IPv4 addresses, these payloads SHOULD be constructed as specified in [RFC3947](#) section 3.2 and included. If the IP addresses of the authIP peers are IPv6 addresses, then these payloads SHOULD NOT be included.
- GSS-API: The GSS-API payload is optional. If the initiator already possesses the peer security principal name (SPN) (for example, by locating it in the SAD), the initiator MUST use the peer SPN to construct the GSS-API payload as specified in [GSS](#) and section [2.2.3.1](#). If on the other hand the initiator does not have the peer SPN, this payload MUST NOT be sent.
- [KE]: The GSS-API payload is optional. The KE payload, if included, MUST be identical to the one specified in [RFC2409](#) section 5. The KE payload MUST be included if the authentication method is anonymous or NTLM. Otherwise, it MUST NOT be included.

After sending the packet, the main mode initiator MUST transition to the Main Mode First Generalized Packet Sent state.

In addition to the message specified above, the initiator MUST also send the first message sent by an IKEv1 initiator, as specified in [RFC2409](#) section 5. This message MUST contain the "MS-MamieExists" IKE Vendor ID payload. [<12>](#)

The initiator MUST also set the negotiation retransmission timer for each of these messages (section [3.1.2](#)).

3.2.5 Processing Events and Sequencing Rules

3.2.5.1 Received Generalized Main Mode First Exchange Response

When the initiator receives a response:

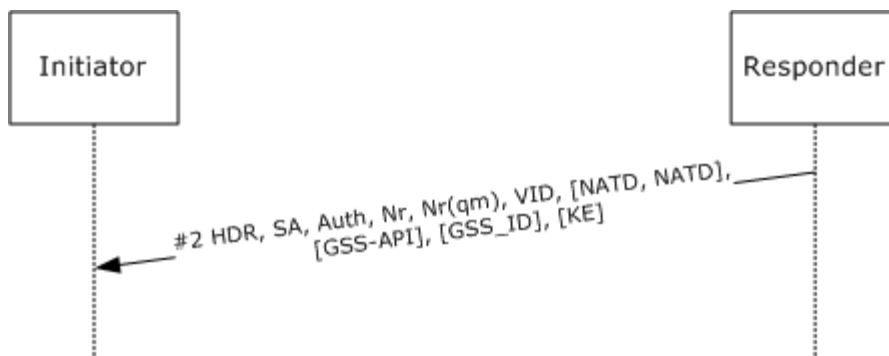


Figure 5: Main Mode First Exchange Response packet

On receiving a packet when initiator is in the Main Mode First Generalized Packet Sent state, the initiator MUST verify that the exchange type in the ISAKMP header of the response indicates that the responder supports the Authenticated Internet Protocol.

If so, the initiator MUST transition to the Main Mode Initiator First exchange Done state.

The initiator MUST also verify that the message is constructed as follows:

- HDR: The ISAKMP header MUST be identical to the first IKE phase 1 initiator header (see section [2.2.1](#)), except that the exchange type MUST be 243 (main mode exchange type). The Encrypted flag SHOULD NOT be set.
 1. The initiator MUST verify that the encrypted flag is set to zero.
 2. The initiator MUST verify that the **message ID** field is zero. [<13>](#)
- The remaining payloads MUST follow an unencrypted Crypto payload.
- Security association (SA): The SA payload MUST be verified by looking up the PAD and the SPD and checking if the proposed transforms are acceptable, as specified in [\[RFC2408\]](#) section 5.4.
- Auth payload (auth): The Auth payload MUST be verified by looking up the PAD and the SPD and confirming that the chosen authentication method by peer is acceptable as specified in [\[RFC2408\]](#) section 5.4.

If the NATD payloads are present, they MUST be processed as specified in [\[RFC3947\]](#) section 3.2. If the presence of a NAT is detected ([\[RFC3947\]](#) section 3.2), then the isNatPresent setting MUST be set to TRUE (see section [3.1.1](#)).

The same Vendor ID interpretation rules as specified in [\[MS-IKEE\]](#) section 3.7.5.1 MUST be used to determine whether to mark the peer as Negotiation Discovery capable (by setting the PeerIsNegotiationDiscoveryCapable flag) in the MMSAD. If the cryptographic parameters in the MMSAD entry for this main mode SA indicate that the initiator was using Diffie Hellman key exchange, then the initiator MUST additionally verify the presence of a KE payload in the received message and calculate the DH shared secret g^{xy} (section [3.1.7.4](#)).

If the peer SPN isn't stored in the MMSAD for this main mode SA, then the initiator MUST additionally verify the presence of a GSS_ID payload in the received message and update the Peer SPN in main mode SA with the ID stored in the payload.

If the initiator is not in Main Mode First Generalized Packet Sent state when it receives this packet, it MUST tear down the corresponding main mode SA if it can match the packet to one, or silently discard the packet otherwise.

3.2.6 Timer Events

See section [3.1.6](#).

3.2.7 Other Local Events

None.

3.3 AuthIP Main Mode Responder Role

3.3.1 Abstract Data Model

See section [3.1.1](#).

3.3.2 Timers

See section [3.1.2](#).

3.3.3 Initialization

None.

3.3.4 Higher-Layer Triggered Events

None.

3.3.5 Processing Events and Sequencing Rules

3.3.5.1 Received Generalize Main Mode First Exchange Response

If the responder is not in Start state, when it receives the above packet it MUST tear down the corresponding main mode SA if it can match the packet to an existing main mode, or silently discard the packet otherwise.

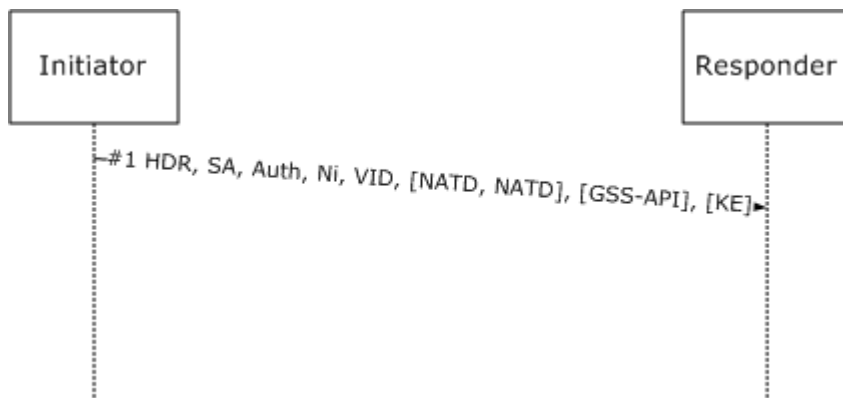


Figure 6: Main Mode First Exchange packet

On receiving a packet in Start state the responder MUST verify that message #1 is formatted as specified in the preceding diagram, and constructed as follows:

- HDR: The ISAKMP header MUST be identical to the first IKE phase 1 initiator header (see section [2.2.1](#)), except that the exchange type MUST be 243 (main mode exchange type). The Encrypted flag SHOULD NOT be set.
- The initiator MUST set the encrypted flag to zero.
- The responder MUST ignore the encrypted flag.
- The responder MUST verify that the **message ID** field is zero. [<14>](#)

If a receiver encounters any errors in the processing of a message it MUST be treated as an Invalid Message event. See section [3.3.7.1](#).

Upon receipt, the responder MUST look up its SAD and SPD to determine whether one of the proposals in the SA payload is acceptable. If more than one acceptable proposal is received, then the responder MUST construct the list of (all acceptable) proposals that it would send to this peer if the responder were the initiator, and accept the first proposal on this constructed list that is also in the received SA payload. The responder MUST choose one proposal or none.

If the NATD payloads are present, they MUST be processed as specified in [\[RFC3947\]](#) section 3.2. If the presence of a **NAT** is detected ([\[RFC3947\]](#) section 3.2), then the isNatPresent setting MUST be set to TRUE (see section [3.1.1](#)).

If the responder encounters no errors in processing message #1, the responder MUST create an MM SA in its MMSAD. The responder MUST update the encryption algorithm, hash algorithm, group description, life type, and life duration values in the MMSAD from the SA payload, and the set of authentication methods in the same MMSAD from the auth payload.

If the "Impersonation Active MM" flag on the MM SA is TRUE, then the responder MUST set the ImpersonationHandle to a locally **unique identifier (UID)** value that uniquely represents the incoming user.

The responder MUST then transition to Main Mode responder First Exchange Done state and send a packet out formatted as specified in the following diagram.

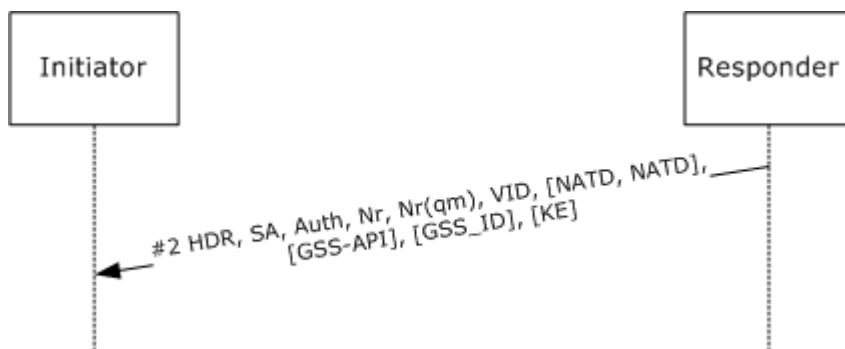


Figure 7: Main Mode First Exchange Response packet

The responder MUST construct this message as follows:

- HDR: The ISAKMP header MUST be identical to the first IKE phase 1 responder packet, except that the exchange type MUST be 243 (MM exchange type). The Encrypted flag MUST not be set.

- The responder MUST set the **message ID** value to zero in message #2 (in MM exchange).
- The remaining payloads MUST follow a nonencrypted Crypto payload.
- SA: The SA payload MUST contain the accepted proposal, as specified in [\[RFC2408\]](#) section 5.4.
- Auth: The responder MUST determine which set of the proposed authentication methods is acceptable (by comparing the proposals with the PAD's IKE Peer Authentication Data (see [\[RFC 4301\]](#) section 4.4.3.2) and MUST respond with at least one method from that set. To allow for Auth retry, the responder MUST respond with all valid authentication methods. When responding with multiple authentication methods, the responder MUST put the methods in its Auth payload in the same order as they were in the initiator payload.
- Nr, Nr(qm): The responder **Nonce** and the quick mode (QM) responder Nonce payloads. The nonce value generation MUST be performed as specified in [\[RFC2408\]](#) section 3.13.
- VID: A sequence of **Vendor ID payloads** that indicate the capabilities supported. See IKE [\[RFC2408\]](#) section 3.16.
- NATD: NAT discovery payloads. If the IP addresses of the **AuthIP** peers are **IPv4** addresses, these payloads SHOULD be constructed as specified in [\[RFC3947\]](#) section 3.2 and included. If the IP addresses of the AuthIP peers are **IPv6** addresses, then these payloads SHOULD NOT be included.
- GSS-API: If the GSS-API payload was provided in message #1, the responder MUST generate the response GSS_API payload as defined in [\[GSS\]](#) and in section [2.2.3.1](#). If the GSS_API payload was not provided in message #1, the responder MUST send its security principal name (SPN) in a GSS_ID payload.
- GSS_ID: The responder SPN, if a GSS-API payload was not present in message #1.
- KE: The KE payload, if requested by the initiator. The KE payload MUST be constructed as specified in IKE [\[RFC2408\]](#) section 3.13.

3.3.5.2 Received IKEv1 Packet

If a responder supports the Authenticated Internet Protocol and receives an IKEv1 initiator packet, the responder MUST silently discard the packet. (See [\[MS-IKEE\]](#) section 3 for details on the IKEv1 initiator packet).

3.3.5.3 Invalid Message Received

If the main mode responder encounters any errors in the processing of a message after the Crypto payload has been processed, it MUST handle them by returning a Notify message with a Notify type NOTIFY_STATUS and an error code, as specified by the "protocol error transition" on the state machine from section [3.1](#). This behavior applies to every message received, as well as to messages received out of order. The only exception is the DoS protection mode, as specified in [\[MS-IKEE\]](#) section 3.9.

3.3.6 Timer Events

See section [3.1.6](#).

3.3.7 Other Local Events

3.3.7.1 Limits on New Negotiations from Peer Reached

When processing an incoming Main Mode First Exchange Request packet (section [3.3.5.1](#)), the receiver silently drops incoming new negotiation requests from a peer if any of the following conditions are met:

- More than 20 MM SAs already exist in the MMSAD with the same peer.
- More than 35 in-progress negotiations exist in the MMSAD with the same peer.

3.4 AuthIP Quick Mode Initiator Role

3.4.1 Abstract Data Model

See section [3.1.1](#).

3.4.2 Timers

3.4.2.1 QM SA Time Lifetime Expiration

This timer is started when a QM SA is negotiated. Its duration is the lifetime of the QM SA, as specified in the SAD.

3.4.3 Initialization

Initial state for this role is captured in section [3.2.5.1](#).

3.4.4 Higher-Layer Triggered Events

None.

3.4.5 Processing Events and Sequencing Rules

3.4.5.1 Quick Mode First Exchange Response

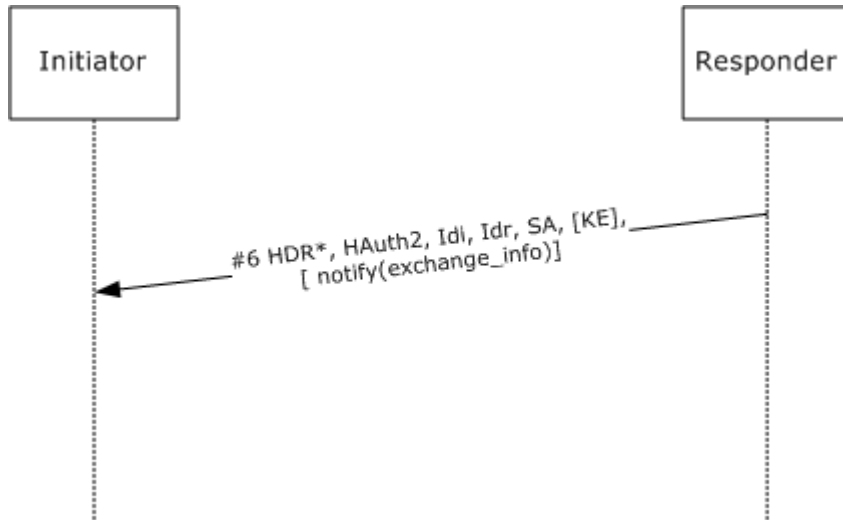


Figure 8: Quick Mode First Exchange Response packet

If the initiator is not in Quick Mode Initiator First Packet Sent state, when the responder receives the above packet it **MUST** tear down the corresponding main mode security association (MM SA) if it can match the packet to an existing one, or silently discard the packet otherwise.

On receiving this packet when the initiator is in Quick Mode Initiator First Packet Sent state (see section [3.4.7.3](#)), the initiator **MUST** verify that message is constructed as follows:

- HDR: The [ISAKMP](#) header **MUST** be identical in format to the first IKE phase 2 initiator packet, as specified in [RFC2409](#) section 5.5, with this exception: the exchange type **MUST** be 243 (MM exchange type) for the first QM exchange under this main mode or 244 (QM exchange type) for any subsequent QM exchange. The Encrypted flag **MUST** be set.
- The following payloads **MUST** be encapsulated in an encrypted Crypto payload. The Crypto payload **MUST** be verified to have been constructed in the following way:
 - The **seqNUM** field **MUST** be set to the current value of the main mode security association database (MMSAD) sequence number for the current exchange type, as specified in section [3.1.4](#).
 - The **Initialization_Vector** and **Encrypted** payload fields **MUST** be computed as specified in [RFC4303](#) section 2.3.
 - The **Padding** field **MUST** be computed as specified in [RFC4303](#) section 2.4.
 - The **Integrity Checksum Data** field **MUST** be computed as specified in [RFC4303](#) section 2.8, and **MUST** cover the ISAKMP header to the beginning of the **Integrity Checksum Data**. It **MUST** be computed using the **HMAC** of the hash algorithm that is negotiated in main mode. The default mechanism specified in [RFC4303](#) **MUST** be used to generate the pad contents.
- HAuth2: The **ISAKMP** Hash payload that contains Auth2. Auth2 **MUST** be computed as specified in section [3.1.7.4](#).

- IDi, IDr, SA, Ni(qm), KE: These payloads MUST be identical to the corresponding IKE payloads ([RFC2408] sections 3.8, 3.4, and 3.13). The SA, IDi, and IDr payloads MUST be constructed by looking up the PAD Entry IDs ([RFC4301] section 4.4.3.1). The **key exchange (KE)** payload MUST be sent if quick mode (QM) **perfect forward secrecy** is required by the SPD.
- Notify (exchange_info): The EXCHANGE_INFO Notify payload MAY be used to indicate to the peer that either guaranteed encryption is active, or that the sender uses negotiation discovery. A precondition for sending this notify is that the MM SA MUST have the PeerIsNegotiationDiscoveryCapable flag set (section 3.2.5.1). These two policy options are specified in [MS-IKEE] section 3.7.4.

If the initiator encounters any errors in the processing of the received message, it MUST be treated as an Invalid Message event as specified in section 3.4.7.1.

Otherwise, it MUST add inbound QM SA to SAD and send the second Quick Mode exchange request specified in the following diagram, and transition to Quick Mode Initiator Second Packet Sent state.

If the QM SA is added and if either the ImpersonationActiveMM or ImpersonationActive EM flag is TRUE for the MM SA corresponding to the QM SA, then the value of ImpersonationHandle from the MM SA MUST be copied over to the QM SA.

This packet MUST contain only a Notify payload of Notify type NOTIFY_QM_SYNCHRONIZE. See section 2.2.3.5.

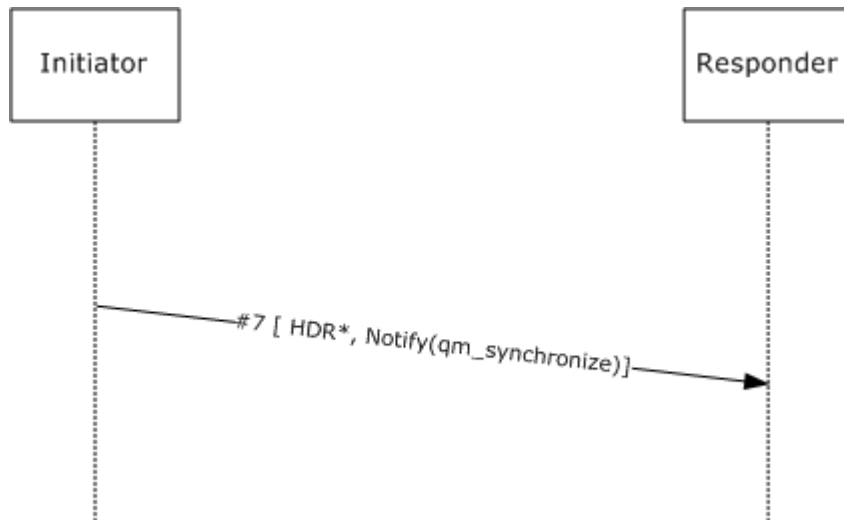


Figure 9: Quick Mode Synchronize Notify packet

3.4.5.2 Quick Mode Second Exchange Response

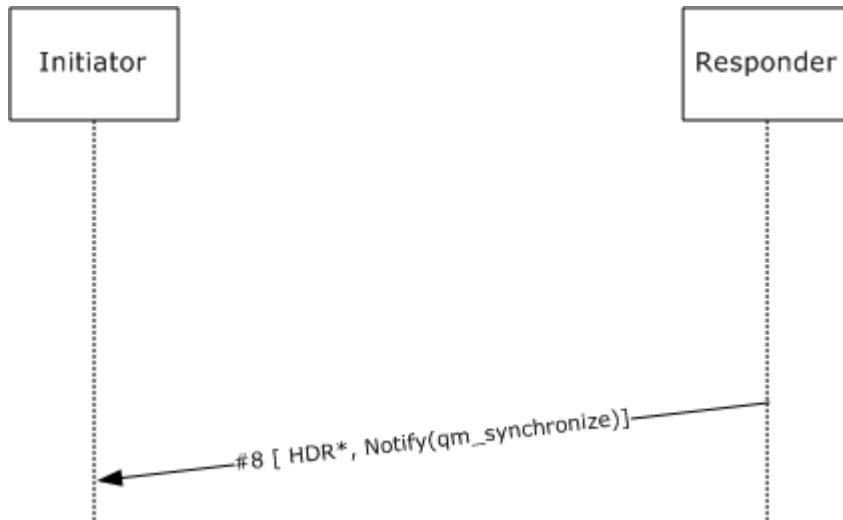


Figure 10: Quick Mode Second Exchange Response packet

If the initiator is not in Quick Mode Initiator Second Packet Sent state when it receives the above packet, it **MUST** tear down the corresponding main mode security association (MM SA) if it can match the packet to an existing main mode, or silently discard the packet otherwise.

If the initiator is in state Quick Mode Initiator Second Packet Sent state, it **MUST** transition to Quick Mode Initiator Done state.

The QM SA keys **MUST** be computed at this stage by using the key material generation algorithm from section [3.1](#). The first ipsechashLength [bytes](#) of IPSecEncryptKey **MUST** be used as the QM SA authentication key and the last ipseccryptLength **bytes** **MUST** be used as the QM SA encryption key.

If either the ImpersonationActiveMM or ImpersonationActive EM flag is TRUE, for the MM SA corresponding to the QM SA, then the ImpersonationHandle from the MM SA **MUST** be copied over to the QM SA.

If the SAD indicates that an extended mode (EM) exchange is not expected to follow the just-completed QM exchange, the outbound QM SA **MUST** be added to the SAD after processing the incoming message.

If the initiator encounters any errors in the processing of a message, it **MUST** be treated as an Invalid Message event. See section [3.4.7.1](#).

The initiator **MUST** start an EM exchange, as specified in section [3.6.7.2](#), if the PAD requires it.

3.4.5.3 QM Rekey Acquire Notification Received

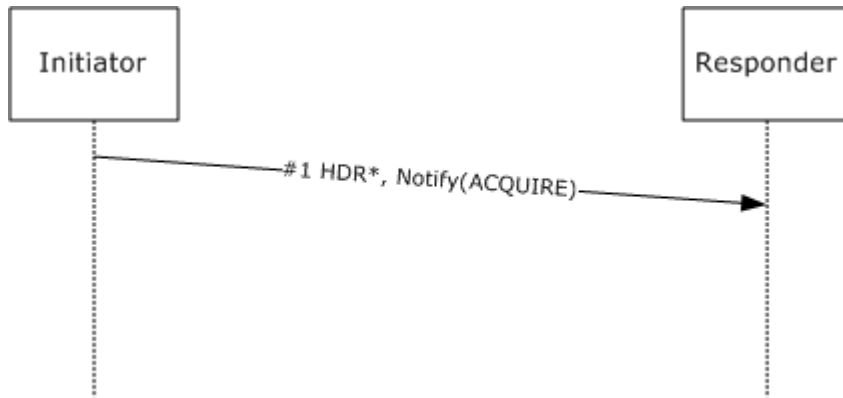


Figure 11: Quick Mode Rekey Acquire Notification packet

On receiving this packet in any state, the responder MUST verify that the message is constructed as follows:

- HDR: The [ISAKMP](#) header exchange type MUST be 246 (Notify exchange type). The Encrypted flag MUST be set.
- Notify (Acquire): The ACQUIRE Notify payload MUST be included and have the RELIABLE_NOTIFY_FLAG set (section [2.2.3.5](#)).

On verification, the responder MUST send back a NOTIFY ACK message formatted as specified in the following diagram.

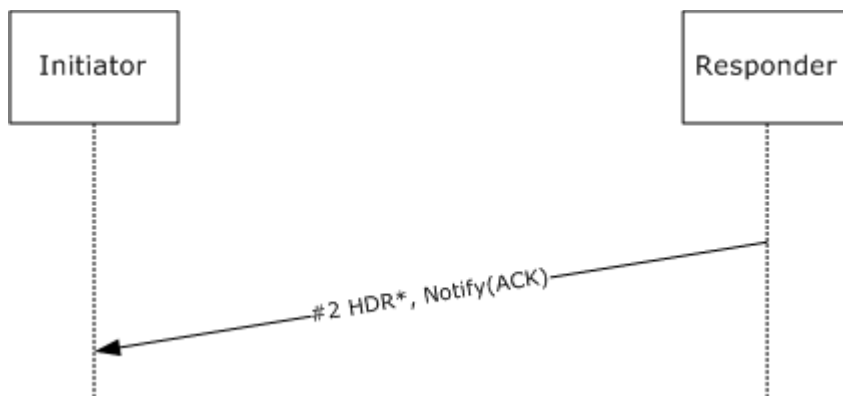


Figure 12: Quick Mode Rekey ACK notify packet

The message MUST be constructed as follows:

- HDR: ISAKMP header MUST be identical to the IKE Informational packet, as specified in [\[RFC2409\]](#) section 5.7, and the exchange type MUST be 246 (NOTIFY exchange type).
- Notify (Status): This notify MUST have the RELIABLE_NOTIFY_FLAG, as specified in section [2.2.3.5](#), set to FALSE.

After sending this packet, the responder MUST transition to Quick Mode Rekey Requested State and proceed as specified in section [3.4.7.4](#).

3.4.5.4 Error Notify Received

Upon receipt of this message, the initiator MUST delete its state for its corresponding MM SA.

3.4.6 Timer Events

3.4.6.1 QM SA Lifetime Timer Expiration

When the QMSA lifetime expiration timer (see section [3.4.2.1](#)) fires, the initiator or responder MUST enter the QM Rekey Requested State.

3.4.7 Other Local Events

3.4.7.1 Invalid Message Received

If an invalid message is received, the initiator MUST send a NOTIFY_STATUS Notify payload and delete its SA state for this negotiation.

The message MUST be constructed as follows:

- HDR: The [ISAKMP](#) header MUST be identical to the IKE Informational packet, as specified in [\[RFC2409\]](#) section 5.7, and the exchange type MUST be 246 (NOTIFY exchange type).
- Notify (Status): This notify MUST have the RELIABLE_NOTIFY_FLAG, as specified in section [2.2.3.5](#), set to TRUE.

3.4.7.2 QM SA Byte Lifetime Expiration

When the number of bytes transmitted over the SA exceeds the byte lifetime of the QM SA, as specified in the SAD, the initiator or responder MUST transition into QM Rekey Requested state.

3.4.7.3 Transition to Main Mode Initiator First Exchange Done

When the Main Mode initiator enters Main Mode Initiator First Exchange Done state, it MUST proceed to Quick Mode Initiator First Packet Sent state after sending a packet formatted as specified in the following diagram.

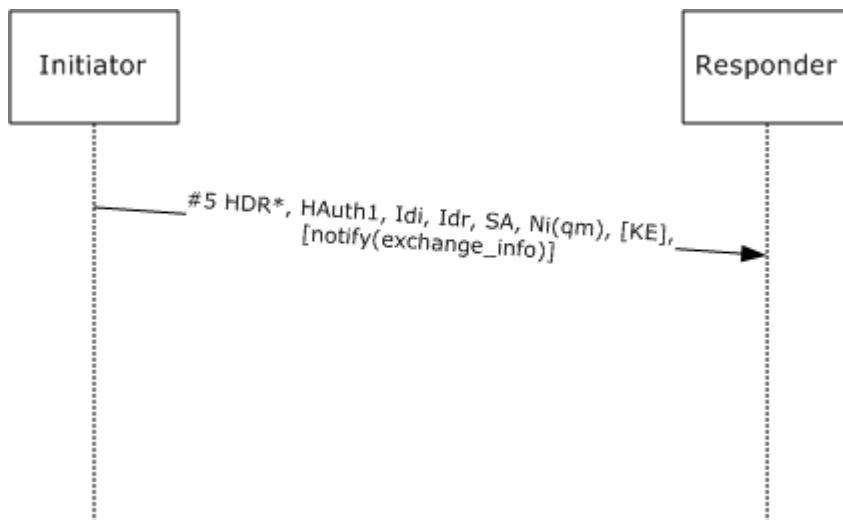


Figure 13: Quick Mode First Exchange packet

The Authenticated Internet Protocol supports two types of quick mode (QM) exchanges:

- Normal (two exchanges)
- Fast (one exchange)

The initiator MAY use fast QM if its SPD lookup returns a single QM proposal and if quick mode perfect forward secrecy is not required by the SPD. Fast QM is optional and implementation-specific.

The first QM exchange (normal or fast) MUST be performed within the MM exchange, that is, using the MM exchange type instead of the QM exchange type.

The message MUST be constructed as follows:

- HDR: The [ISAKMP](#) header MUST be identical to the first IKE phase 2 initiator packet, as specified in [\[RFC2409\]](#) section 5.5, with this exception: the exchange type MUST be 243 (MM exchange type) for the first quick mode exchange under this main mode or 244 (QM exchange type) for any subsequent QM exchange. The Encrypted flag MUST be set.
- The following payloads MUST be encapsulated in an encrypted Crypto payload. The Crypto payload MUST be constructed in the following way:
 - The **seqNUM** field MUST be set to the current value of the main mode security association database (MMSAD) sequence number for the current exchange type, as specified in section [3.1.4](#).
 - The **Initialization_Vector** and **Encrypted** payload fields MUST be computed as specified in [\[RFC4303\]](#) section 2.3.
 - The **Padding** field MUST be computed as specified in [\[RFC4303\]](#) section 2.4.
 - The Integrity Checksum Data field MUST be computed as specified in [\[RFC4303\]](#) section 2.8, and MUST cover the ISAKMP header to the beginning of the Integrity Checksum Data. It MUST be computed using the HMAC of the hash algorithm that is negotiated in main mode. The default mechanism specified in [\[RFC4303\]](#) MUST be used to generate the pad contents.
- H: The ISAKMP Hash payload that contains Auth1. Auth1 MUST be computed as defined in section [3.1.7.4](#).
- IDi, IDr, SA, Ni(qm), KE: These payloads MUST be identical to the corresponding IKE payloads, as specified in [\[RFC2408\]](#) sections 3.8, 3.4 and 3.13. The SA, IDi, and IDr payloads MUST be constructed by looking up the PAD Entry IDs (see [\[RFC4301\]](#) section 4.4.3.1). The key exchange (KE) payload MUST be sent if quick mode perfect forward secrecy is required according to the policy stored in the SPD.
- Notify(exchange_info): The EXCHANGE_INFO Notify payload MUST be included if the SPD indicates either that guaranteed encryption is active, or the sender uses negotiation discovery (based on SPD lookup). A precondition for sending this notify is that the MM SA MUST have the PeerIsNegotiationDiscoveryCapable bit set in the MMSAD (see section [3.2.5.1](#)). These two policy options MUST be implemented as specified in [\[MS-IKEE\]](#) section 3.7.4.

3.4.7.4 Transition to QM Rekey Requested State

When initiator enters Quick Mode Rekey Requested state (see sections [3.4.5.3](#) and [3.4.7.4](#)), it MUST check whether all the following conditions are met:

- The maximum number of QMs for this main mode security association (MM SA) has been reached, or the lifetime of the MM has expired.
- One-way authentication is used to establish the MM. This information is included in the IKE Peer Authentication Data stored in the PAD (see [\[RFC4301\]](#) section 4.4.3.2).

If not all these conditions are met, the initiator MUST proceed to Quick Mode Initiator First Packet Sent state as specified in section [3.4.7.3](#).

Otherwise, the initiator MUST proceed to Quick Mode Notify Acquire Sent state after sending a packet formatted as specified in the following diagram:

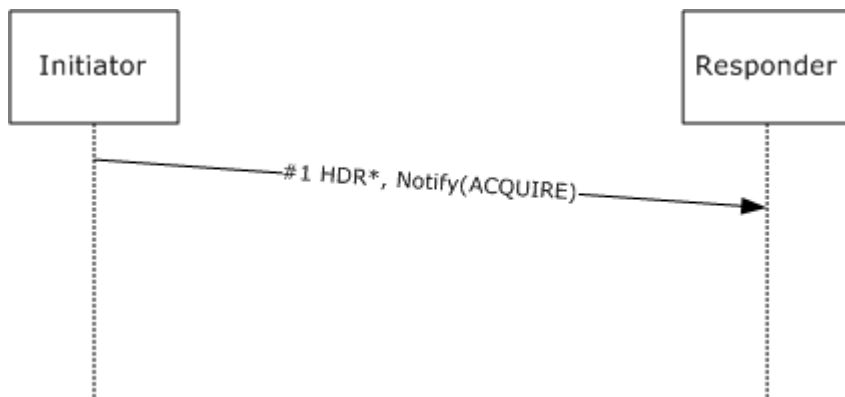


Figure 14: Quick Mode Acquire Notify packet

The message MUST be constructed as follows:

- HDR: The [ISAKMP](#) header MUST be identical to the first IKE phase 2 initiator packet, as specified in [\[RFC2409\]](#) section 5.5, with this exception: the exchange type MUST be 246 (Notify exchange type). The Encrypted flag MUST be set.
- Notify (Acquire): The ACQUIRE Notify payload MUST be included, be constructed as specified in section [2.2.3.5](#), and have the RELIABLE_NOTIFY_FLAG set.

3.5 AuthIP Quick Mode Responder Role

3.5.1 Abstract Data Model

See section [3.1.1](#).

3.5.2 Timers

See section [3.1.2](#).

3.5.3 Initialization

Initial state for this role is captured in section [3.3.5.1](#).

3.5.4 Higher Layer Triggered Events

None.

3.5.5 Processing Events and Sequencing Rules

3.5.5.1 Received Quick Mode First Exchange Request

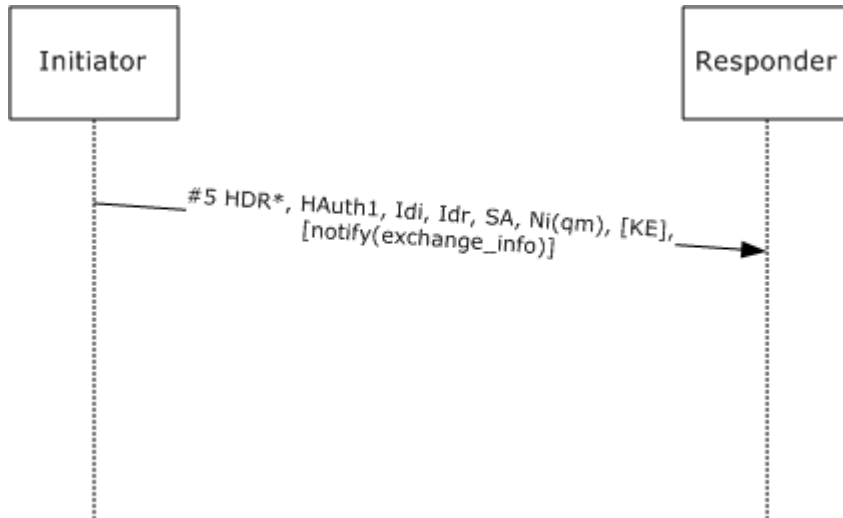


Figure 15: Quick Mode First Exchange packet

If the responder is not in Main Mode Responder First Exchange Done state, when it receives the above packet it **MUST** tear down the corresponding main mode (MM) if it can match the packet to an existing main mode, and silently discard the packet otherwise.

If the responder encounters any errors in the processing of a message it **MUST** be treated as an Invalid Message event. See section [3.5.7.1](#).

Upon receipt of message #5 (as labeled in the previous diagram), the responder **MUST**:

- Decrypt the Crypto payload.
- Compute Auth1 as specified in section [3.1.7.4](#).
- Verify that the HAuth1 payload contains the computed Auth1 value.
- Consult the SPD to select a proposal from the SA, IDi, and IDr payloads, and generate the KE by using Diffie-Hellman, as specified in [\[RFC2408\]](#) section 3.7.

If the responder encounters no errors while it processes message #5 and at least one of the initiator proposals is acceptable (under the criteria specified in IKEv1; for more information, see [\[RFC2408\]](#) section 5.4), it **MUST** construct message #6 in response as follows:

- HDR: The [ISAKMP](#) header **MUST** be identical to the first IKE phase 2 initiator packet (as specified in [\[RFC2409\]](#) section 5.5), except that the exchange type **MUST** be 243 (MM exchange type) for the first quick mode exchange under this main mode or 244 (QM exchange type) for any subsequent QM exchange. The Encrypted flag **MUST** be set.
- The payloads that remain **MUST** be encapsulated in a Crypto payload.
- HAuth2: The ISAKMP Hash payload **MUST** contain the field Auth2 computed as defined in section [3.1.7.4](#).

- IDi, IDr, SA, KE: These payloads MUST be identical to the corresponding IKE payloads specified in [RFC2408](#) sections 3.8, 3.4, and 3.13.
- Notify(exchange_info): If either guaranteed encryption is active or the sender uses negotiation discovery, the EXCHANGE_INFO Notify payload MUST be used to indicate this information to the peer. A precondition for sending this notify is that the MM SA MUST have its PeerIsNegotiationDiscoveryCapable flag set in the MMSAD (see section [3.2.5.1](#)). These two policy options are specified in [MS-IKEE](#), section 3.7.4.

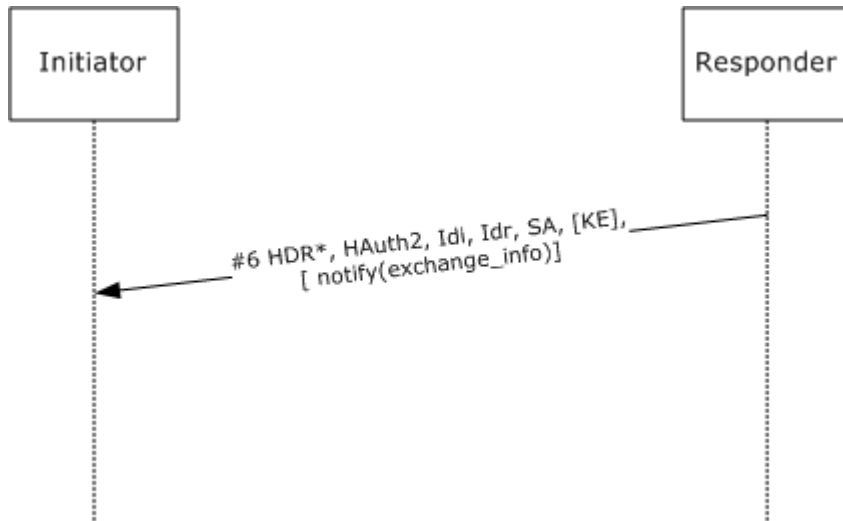


Figure 16: Quick Mode Exchange Info notify packet

If no proposal is acceptable (as determined by the procedure specified in [RFC2408](#) section 5.4), the responder MUST send a Notification NO-PROPOSAL-CHOSEN payload (section [2.2.3.5](#)) with RELIABLE_NOTIFY_FLAG set to indicate that no proposal was chosen. The payload MUST be formatted as specified in [RFC2408](#) section 5.4.

3.5.5.2 Received Quick Mode Second Exchange Request

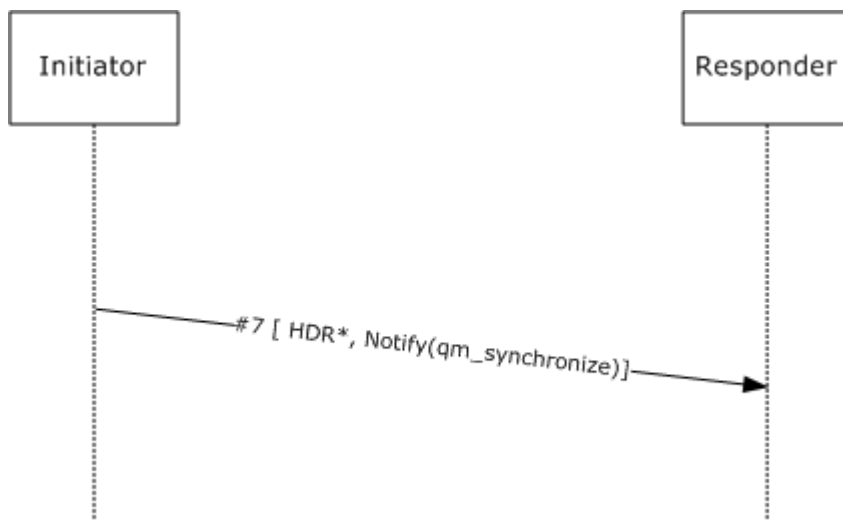


Figure 17: Quick Mode Synchronize Notify packet

If the responder is not in Quick Mode Responder First Exchange Done state, when the responder receives the above packet it MUST tear down the corresponding main mode if it can match the packet to an existing main mode, and silently discard the packet otherwise.

On receiving the above packet in Quick Mode Responder First Exchange Done state, the responder MUST verify the packet, and if it is valid, send out the response specified by the following diagram, and transition to Quick Mode Responder Done state.

To verify the incoming packet, the responder MUST do the following:

- HDR: Verify that the [ISAKMP](#) header is identical to the first IKE phase 2 initiator packet (as specified in [RFC2409](#) section 5.5), except that the exchange type MUST be 244 (QM exchange type)
- Decrypt the Crypto payload to obtain the rest of the payloads and verify the AuthIP packet integrity check. The decryption and integrity verification procedure is specified in [RFC4303](#) section 3.4.
- Verify that the decrypted packet contains only a single payload, which MUST be a Notify payload of Notify type NOTIFY_QM_SYNCHRONIZE (see section [2.2.3.5](#)).

If the responder encounters any errors in verifying the packet, it MUST be treated as an Invalid Message event. See section [3.5.7.1](#).

The QM SA keys MUST be computed using the key material generation algorithm from section [3.1](#). The first ipsechashLength [bytes](#) of IPSecEncryptKey MUST be used for the QM SA authentication key and the last ipsecryptLength bytes MUST be used for the QM SA encryption key.

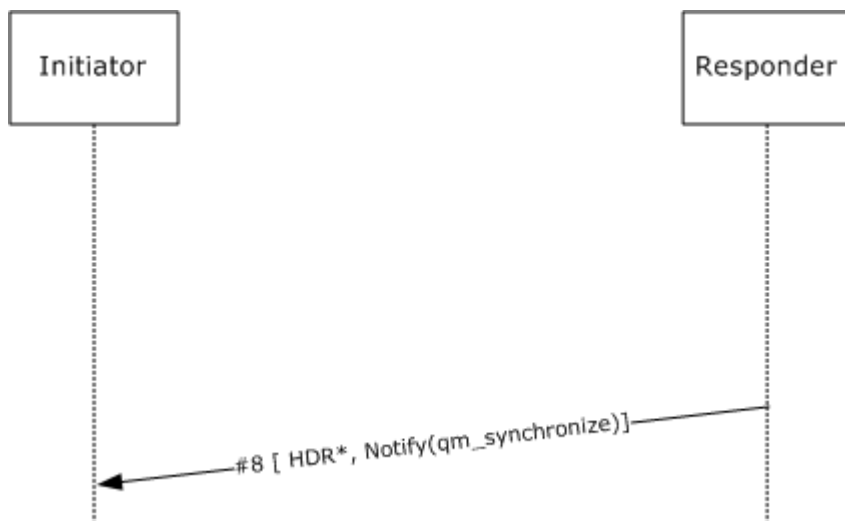


Figure 18: Quick Mode Synchronize Notify Response packet

If either the ImpersonationActiveMM or ImpersonationActive EM flag is TRUE for the MM SA corresponding to the QM SA, then the ImpersonationHandle value from the MMSA MUST be copied over to the QM SA.

The inbound/outbound QM SAs MUST also be added to the SAD prior to sending this packet.

3.5.6 Timer Events

See section [3.1.6](#).

3.5.7 Other Local Events

3.5.7.1 Invalid Message Received

If the AuthIP responder experiences a failure in processing a packet, the responder MUST send the initiator a Notify message with a Notify type of NOTIFY_STATUS and tear down the corresponding Quick Mode state.

3.6 AuthIP Extended Mode Initiator Role

3.6.1 Abstract Data Model

See section [3.1.1](#).

3.6.2 Timers

See section [3.1.2](#).

3.6.3 Initialization

Initial State for this role is captured in section [3.4.5.2](#).

3.6.4 Higher Layer Triggered Events

None.

3.6.5 Processing Events and Sequencing Rules

3.6.5.1 Received Extended Mode First Exchange Response

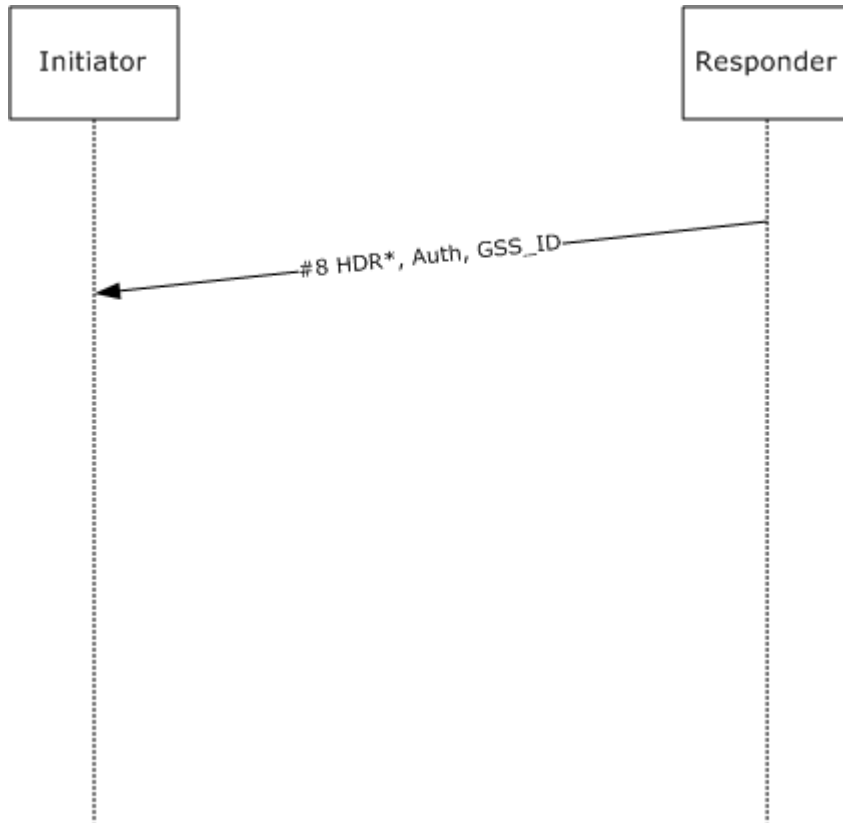


Figure 19: Extended Mode First Exchange Response packet

If the initiator is not in Extended Mode First Request Sent State (see section [3.6.7.1](#)), when the initiator receives the above packet it **MUST** tear down the corresponding main mode (MM) if it can match the packet to an existing main mode, or silently discard the packet otherwise.

If the initiator encounters any errors in the processing of this message, it **MUST** be treated as an Invalid Message event. See section [3.6.5.3](#).

On receiving the above packet in Extended Mode First Request Sent State (see section [3.6.7.1](#)), the initiator **MUST** verify that message #3 (in the diagram above) is constructed as follows:

- HDR: The [ISAKMP](#) header **MUST** be identical to the first IKE phase 2 initiator packet, as specified in [RFC2409](#) section 5.5, except that the exchange type **MUST** be 243 (MM exchange type). The Encrypted flag **SHOULD NOT** be set. [<15>](#)
- The remaining payloads **MUST** follow a non-encrypted Crypto payload.
- GSS-API: This payload **MUST** be constructed as specified in [\[GSS\]](#) and section [2.2.3.1](#).

If the initiator encounters no errors in processing this message, it **MUST** start a GSS-API exchange by transitioning to the GSS_API Start state (see the GSS state machine in section [3.8](#)).

3.6.5.2 Received Extended Mode Final Exchange Response

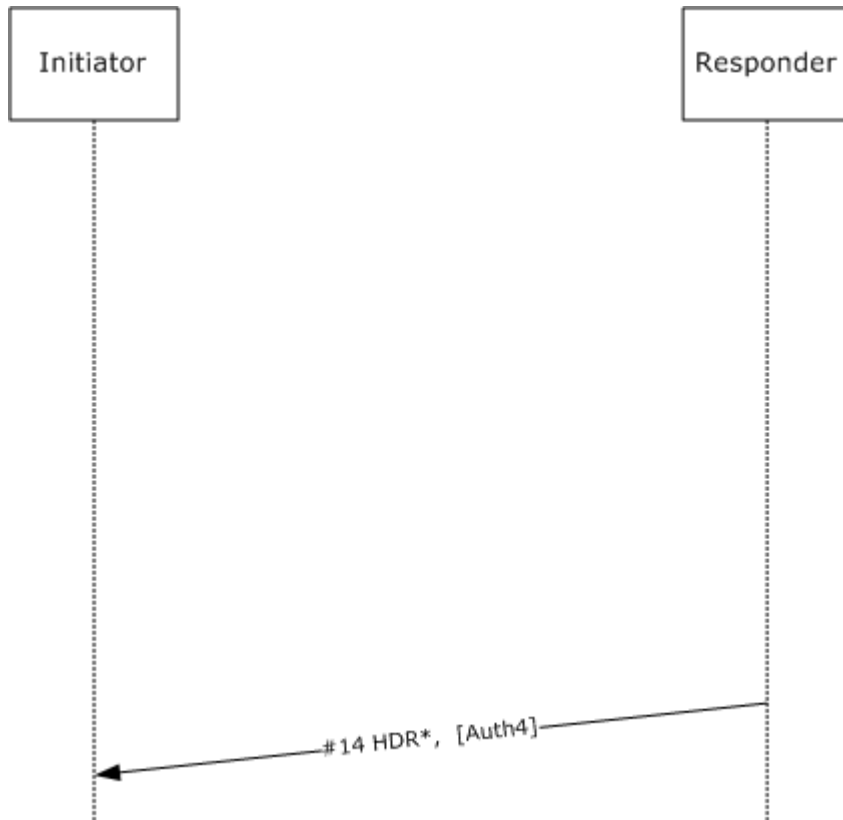


Figure 20: Extended Mode Final Exchange Response packet

If the initiator is not in Extended Mode Initiator Final Exchange Request Sent state (see section [3.6.7.2](#)) when it receives this packet, it **MUST** tear down the corresponding main mode (MM) if it can match the packet to an existing main mode, or silently discard the packet otherwise.

On receiving the Extended Mode Final Exchange Response packet in Extended Mode Initiator Final Exchange Request Sent state (see section [3.6.7.2](#)), the initiator **MUST**:

- Decrypt the Crypto payload.
- Compute Auth4, as specified in section [3.1.7.4](#).
- Verify that the HAuth4 payload contains the computed Auth4 value.

If either the ImpersonationActiveMM or ImpersonationActive EM flag value is TRUE for the MM SA corresponding to the QM SA, then the ImpersonationHandle value from the MM SA **MUST** be copied over to the QM SA.

- Add the outbound QM SA to the SAD after it verifies Auth4 (message #14) as valid.
 - Transition to Extended Mode Complete state.

If the initiator encounters any errors in the processing of this message, it **MUST** be treated as an Invalid Message event. See section [3.6.7.1](#).

3.6.5.3 Invalid Message Received

If the AuthIP Extended Mode initiator receives an invalid packet that causes an error in response processing, the initiator **MUST** tear down the corresponding Main Mode and Quick Mode states.

3.6.6 Timer Events

See section [3.1.6](#).

3.6.7 Other Local Events

3.6.7.1 Transition Quick Mode Initiator Done

On reaching the Quick Mode Initiator Done state, the initiator **MUST** automatically proceed to Extended Mode, if required by policy, by sending the packet specified in the following diagram, and transitioning to Extended Mode First Request Sent state. If no Extended Mode is required, the SA negotiation is already complete and **MUST NOT** proceed further.

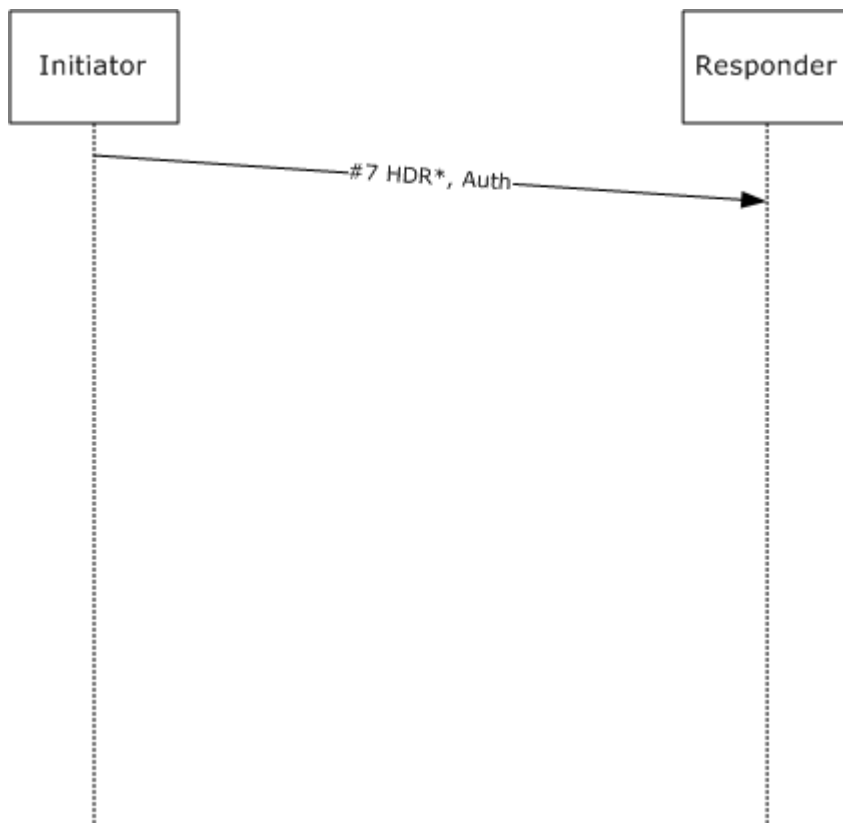


Figure 21: Transition to Extended Mode Initiator packet

The initiator **MUST** construct the message as follows:

- HDR: The [ISAKMP](#) header **MUST** be constructed identically to the first IKE phase 2 initiator packet, as specified in [RFC2409](#) section 5.5, except that the exchange type **MUST** be 245 (EM exchange type). The Encrypted flag **MUST** be set.

- The payloads that remain MUST be encapsulated in a Crypto payload.
- Auth: The proposed authentication methods for Extended Mode round of authentication MUST be constructed by looking up the PAD's Peer Authentication Data (see [\[RFC4301\]](#) section 4.4.3.2).

3.6.7.2 Extended Mode Initiator GSS Exchange Success

On successfully completing the GSS exchange within Extended mode (that is, reaching GSS_API_Done state in the GSS state machine, as in section [3.8.5.1](#)), the initiator MUST add the inbound QM SA to the SAD and send a packet constructed as specified in the following diagram, then transition to Extended Mode Initiator Final Exchange Request Sent state.

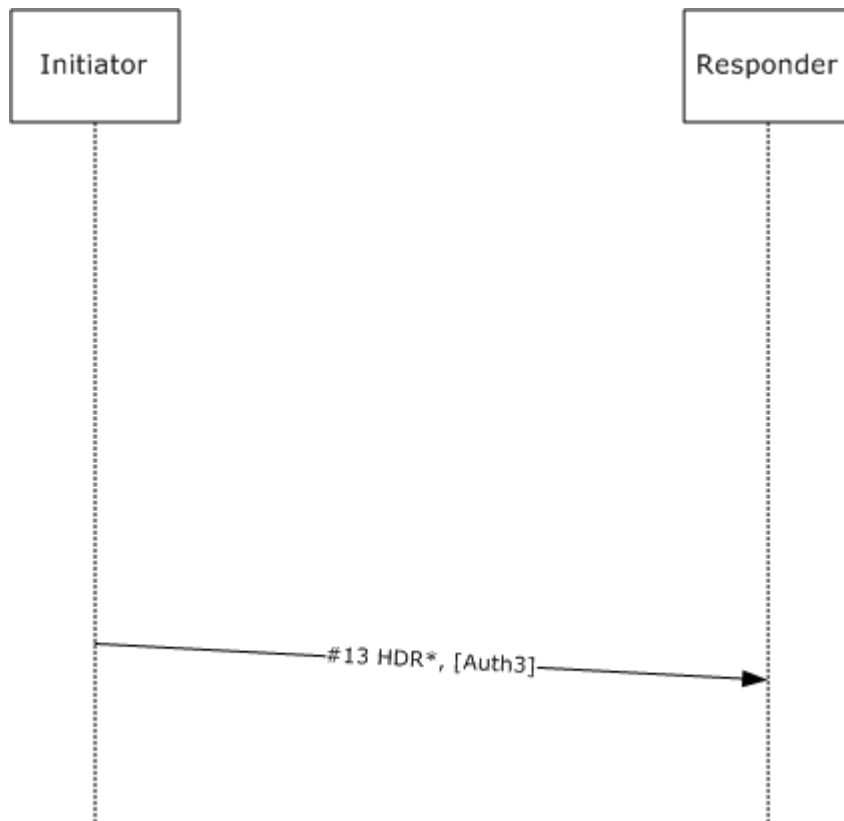


Figure 22: Extended Mode Initiator final exchange packet

The initiator MUST construct the packet as follows:

- HDR: The [ISAKMP](#) header MUST be identical to the first Internet Key Exchange (IKE) phase 2 initiator packet (as specified in [\[RFC2409\]](#) section 5.5), except that the exchange type MUST be 245 (EM exchange type). The Encrypted flag MUST be set.
- The remaining payloads MUST be encapsulated in a Crypto payload. The Crypto payload MUST be constructed as specified in section [3.4.7.3](#).
- HAuth3: The ISAKMP Hash payload, as specified in [\[RFC2408\]](#) section 12. It MUST contain Auth3, computed as specified in section [3.1.7.4](#).

3.7 AuthIP Extended Mode Responder Role

3.7.1 Abstract Data Model

See section [3.1.1](#).

3.7.2 Timers

See section [3.1.2](#).

3.7.3 Initialization

The initial state for this role is captured in section [3.5.5.2](#).

3.7.4 Higher-Layer Triggered Events

None.

3.7.5 Processing Events and Sequencing Rules

3.7.5.1 Received Extended Mode First Exchange Request

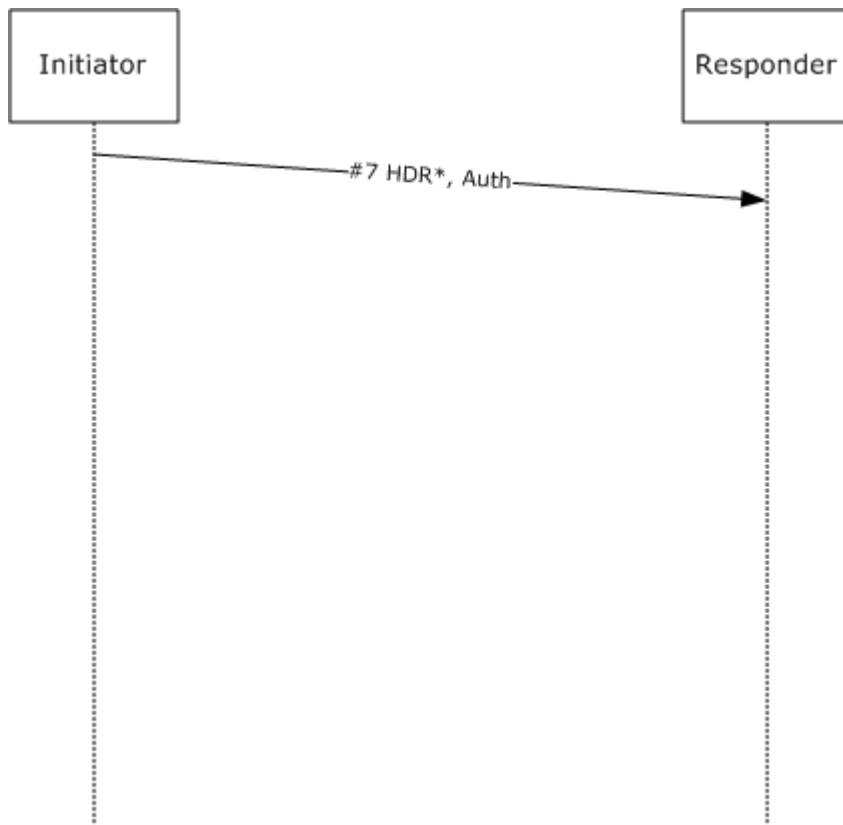


Figure 23: Transition to Extended Mode Initiator packet

If the responder is not in Quick Mode Responder Done state when it receives the above packet, the responder MUST tear down the corresponding main mode (MM) if it can match the packet to an existing main mode, or silently discard it otherwise.

On receiving the above packet in Quick Mode Responder Done state, the responder MUST verify that message #7 is constructed as follows:

- HDR: The ISAKMP header MUST have a format identical to the first IKE phase 2 initiator packet, as specified in [\[RFC2409\]](#) section 5.5, except that the exchange type MUST be 245 (EM exchange type). The Encrypted flag MUST be set. The responder SHOULD also verify that the message ID field value is set to one. [<16>](#)
- The payloads that remain MUST be encapsulated in a Crypto payload. If an error occurs at this stage or before, the responder MUST silently discard the message. The Crypto payload MUST be constructed as specified in section [3.3.5.1](#).
- Auth: The proposed authentication methods. This payload MUST be processed identically to the Auth payload in the MM exchange (see section [3.3.5.1](#)), except that all operations on the MMSAD are on the EM Auth method state.

If the responder encounters no errors while it processes message #7, the responder MUST construct message #8 in response, formatted as specified in the following diagram and constructed as follows:

- HDR: The ISAKMP header MUST have an identical format to the first IKE phase 2 initiator packet, as specified in [\[RFC2409\]](#) section 5.5, except that the exchange type MUST be 245 (EM exchange type). The Encrypted flag MUST be set. The responder MUST also set the message ID value to zero.
- The payloads that remain MUST be encapsulated in a Crypto payload. The Crypto payload MUST be constructed as specified in section [3.3.5.1](#).
- Auth: The responder MUST determine which set of the proposed authentication methods is acceptable (by comparing the proposals with the PAD's IKE Peer Authentication Data (see [\[RFC4301\]](#) section 4.4.3.2) and MUST respond with at least one method of that set. To allow for Auth retry, the responder MUST respond with all valid authentication methods. When responding with multiple authentication methods, the responder MUST put the methods in its Auth payload in the same order as they were in the initiator payload.
- GSS_ID: This payload MUST have identical format to the GSS_ID payload sent as part of the MM exchange (see section [3.3.5.1](#)).

After sending this response, the Responder MUST transition to the Extended Mode Responder first exchange done state.

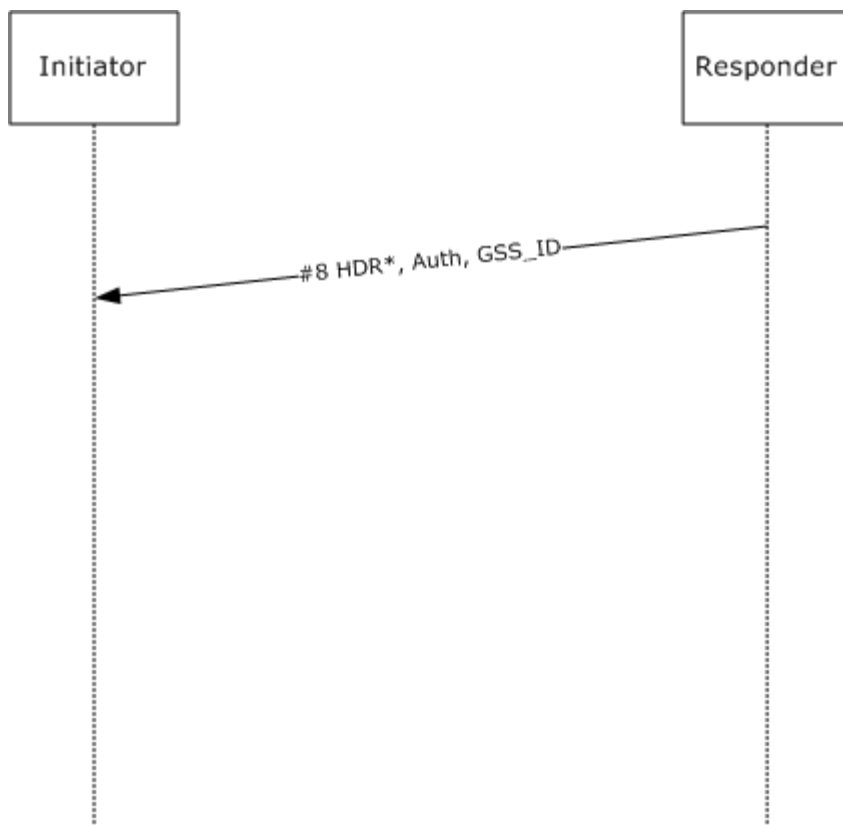


Figure 24: Quick Mode Synchronize Notify packet

If the responder encounters any errors in the processing of this message, it MUST be treated as an [Invalid Message Received \(section 3.7.7.1\)](#) event.

3.7.5.2 Received Extended Mode Final Exchange Request

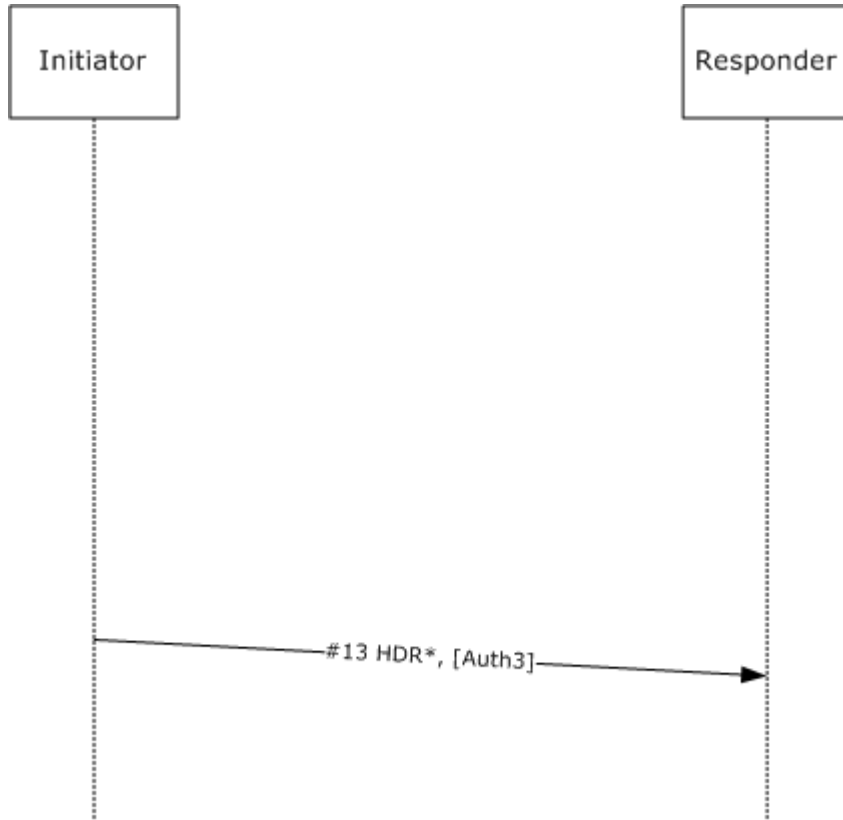


Figure 25: Extended Mode Final Exchange packet

If the Extended Mode responder has finished GSS-API negotiation successfully, that is, it is in the GSS_API Done state and receives the above packet, then the responder **MUST**:

- Decrypt the Crypto payload.
- Compute Auth3, as specified in section [3.1.7.4](#).
- Verify that the HAuth3 payload contains the computed Auth3 value.

If the responder is not in GSS_API_Done state when it receives the above packet, it **MUST** tear down the corresponding main mode if it can match the packet to an existing main mode, or silently discard it otherwise.

- If the "Impersonation Active EM" flag on the MM SA is true, then the responder **MUST** set the ImpersonationHandle to a locally unique value that represents the incoming user.

If the responder encounters no errors while it processes this packet, the responder **MUST** send a message formatted as specified in the following diagram in response.

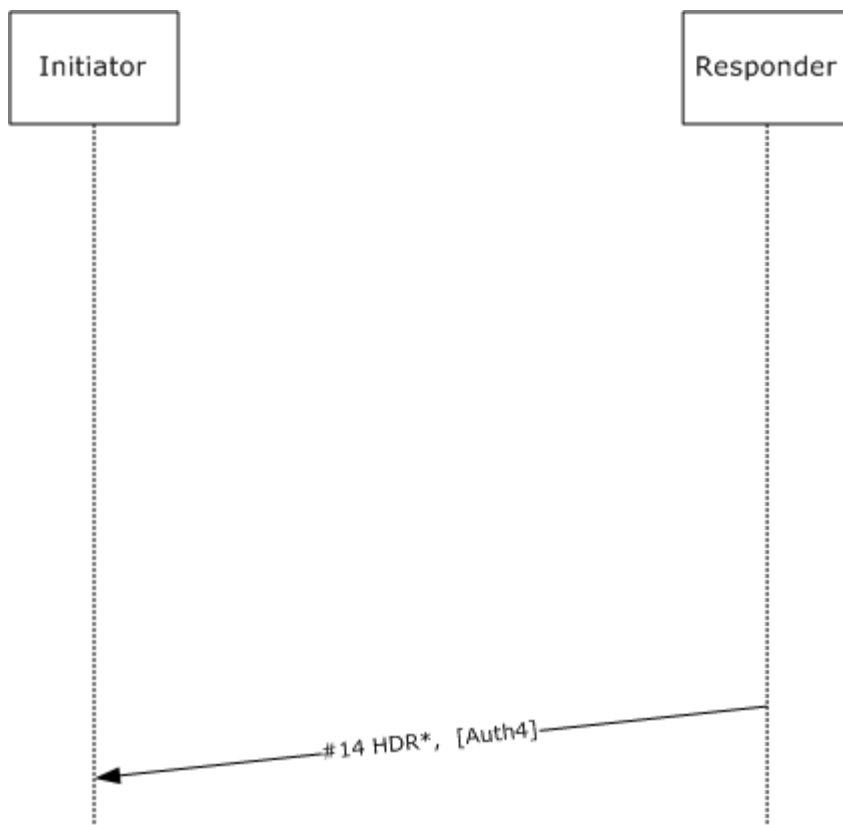


Figure 26: Extended Mode Final Exchange Response packet

The responder MUST construct the response message as follows:

- HDR: The ISAKMP header MUST have identical format to the first IKE phase 2 initiator packet (as specified in [RFC2409](#) section 5.5), except that the exchange type MUST be 245 (EM exchange type). The Encrypted flag MUST be set.
- The remaining payload MUST be encapsulated in a Crypto payload. The Crypto payload MUST be constructed as specified in section [3.5.5](#).
- HAuth4: The ISAKMP Hash payload that contains Auth4 MUST be computed as specified in section [3.1](#).

Before it sends the above response, the responder MUST add both QM SAs to the SAD and transition to Extended Mode Complete state and MUST enforce the rules defined in the PAD including the policy for use of Explicit Credentials in **EM** (see section [3.1.1](#)), as follows: If Allow Explicit Credentials in EM is FALSE but Explicit Credentials EM is TRUE, then the responder MUST fail the connection. See section [3.7.7.1](#).

If the responder encounters any errors in the processing of this message. it MUST be treated as an Invalid Message Received (section 3.7.7.1) event.

3.7.6 Timer Events

See section [3.1.6](#).

3.7.7 Other Local Events

3.7.7.1 Invalid Message Received

If the AuthIP Extended mode responder receives an invalid packet that causes an error in request processing, it MUST tear down the corresponding Main Mode and Quick Mode state.

3.8 Generalized AuthIP GSS-API Initiator Role

3.8.1 Abstract Data Model

See section [3.1.1](#).

3.8.2 Timers

See section [3.1.2](#).

3.8.3 Initialization

The initial state for this role is captured in section [3.6.5.1](#).

3.8.4 Higher-Layer Triggered Events

None.

3.8.5 Processing Events and Sequencing Rules

3.8.5.1 GSS-API Response Received

To understand how the initiator can get to GSS-API Request Sent state, see section [3.8.7.1](#).

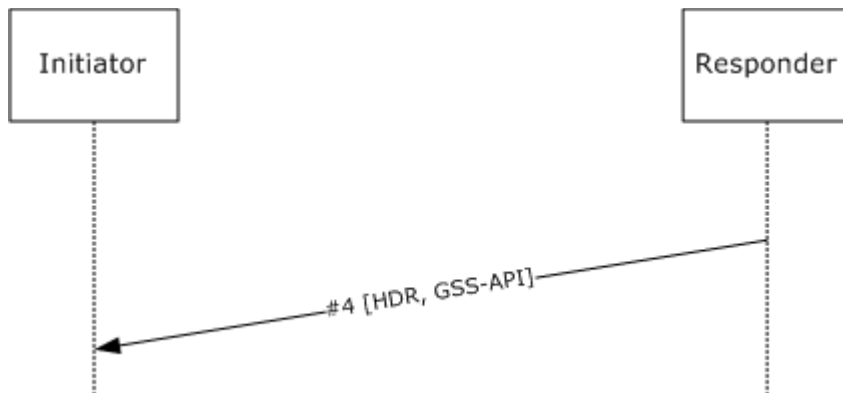


Figure 27: GSS-API Response packet

If the responder is not in GSS-API Request Sent state when it receives the above packet, it MUST tear down the corresponding main if it can match the packet to an existing main mode, or silently discard the packet otherwise.

On receiving the above packet in GSS-API Request Sent state, if the initiator is successfully done (as defined in [\[GSS\]](#) and section [2.2.3.1](#)), it MUST transition to GSS-API Done state. Otherwise, the packet MUST be passed to the GSS-API layer for processing. If an error results from this processing,

the responder MUST silently discard the packet. Otherwise, the initiator MUST send another GSS-API request formatted as specified below, and return to GSS-API Request Sent state.

In the latter case, the initiator MUST send a message #3 constructed as follows:

- HDR: The ISAKMP header MUST have identical format to the first IKE phase 2 initiator packet (as specified in [\[RFC2409\]](#) section 5.5), except that the exchange type MUST be 243 (MM exchange type). The Encrypted flag SHOULD NOT be set. [<17>](#)
- The remaining payloads MUST follow a non-encrypted Crypto payload.
- GSS-API: MUST be constructed as specified in [\[GSS\]](#) and section [2.2.3.1](#).

3.8.6 Timer Events

See section [3.1.6](#).

3.8.7 Other Local Events

3.8.7.1 GSS-API Start

When the initiator starts a GSS-API exchange, it MUST begin by sending a packet formatted as specified in the following diagram, and transition into the GSS-API Request Sent state.

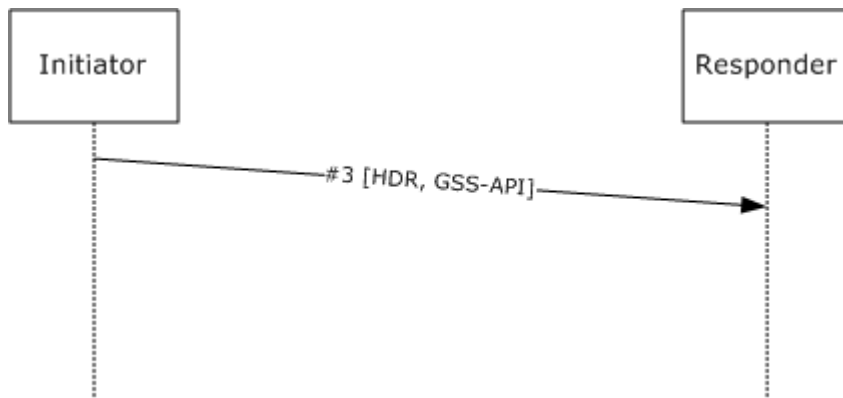


Figure 28: GSS-API initial exchange packet

The initiator MUST start the GSS handshake by using the first GSS-API type that is returned in the Auth payload of the responder (see section [3.2.5.1](#) for Main Mode, or section [3.7.5.1](#) for Extended Mode).

The message MUST be constructed as follows:

- HDR: The ISAKMP header MUST have identical format to the first IKE phase 2 initiator packet (as specified in [\[RFC2409\]](#) section 5.5), except that the exchange type MUST be 243 (MM exchange type). The Encrypted flag SHOULD NOT be set. [<18>](#)
- The remaining payloads MUST follow a non-encrypted Crypto payload.
- GSS-API: As specified in [\[GSS\]](#) and section [2.2.3.1](#). If the initiator is using explicit credentials, it MUST set the GSS_EXPLICIT_CREDENTIALS in the Flags field of the GSS-API payload to "1" (see section [2.2.3.1](#)).

3.9 Generalized AuthIP GSS-API Responder Role

3.9.1 Abstract Data Model

See section [3.1.1](#).

3.9.2 Timers

See section [3.1.2](#).

3.9.3 Initialization

The initial state for this role is captured in sections [3.3.5.1](#) and [3.7.5.1](#).

3.9.4 Higher-Layer Triggered Events

None.

3.9.5 Processing Events and Sequencing Rules

3.9.5.1 GSS-API Request Received

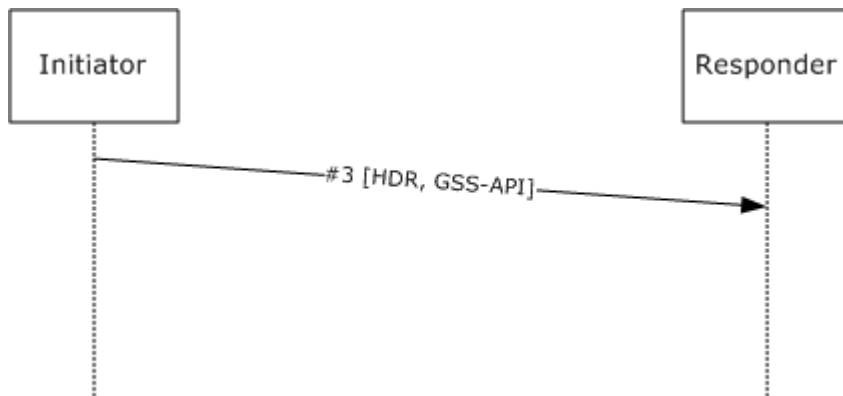


Figure 29: GSS-API initial exchange packet

If the responder is not in either Main Mode First Exchange Done state or Extended Mode Responder First Exchange Done state when it receives the above packet, the responder **MUST** tear down the corresponding main mode if it can match the packet to an existing main mode, or silently discard the packet otherwise.

When either in Main Mode First Exchange Done state or Extended Mode Responder First Exchange Done state, the responder receives a packet formatted as specified in the above diagram. It **MUST** verify that message #3 is constructed as follows:

- HDR: The ISAKMP header **MUST** have identical format to the first IKE phase 2 initiator packet (as specified in [\[RFC2409\]](#) section 5.5), except that the exchange type **MUST** be 243 (MM exchange type). The Encrypted flag **MUST NOT** be set.
- The remaining payloads **MUST** follow a non-encrypted Crypto payload.
- GSS-API: **MUST** be constructed as specified in [\[GSS\]](#) and section [2.2.3.1](#).

On successful completion of the QM exchange, both initiator and responder MUST update the QM pointers (see section [3.1.1](#)) to associate this QM with the MM that carried it.

If the responder encounters any errors in the processing of this message, it MUST be treated as an Invalid Message Received event (see section [3.9.7.1](#)).

If the responder encounters no errors in processing message #3, it MUST construct message #4 in response, as follows:

- HDR: The ISAKMP header MUST have identical format to the first IKE phase 2 initiator packet (as specified in [RFC2409](#) section 5.5), except that the exchange type MUST be 243 (MM exchange type). The Encrypted flag MUST NOT be set.
- The remaining payloads MUST follow a non-encrypted Crypto payload.
- GSS-API: MUST be constructed as specified in [GSS](#) and section [2.2.3.1](#).

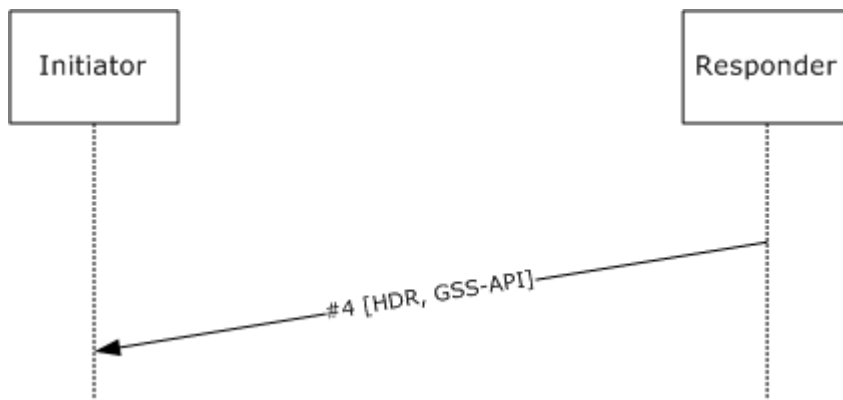


Figure 30: GSS-API Response packet

3.9.6 Timer Events

See section [3.1.6](#).

3.9.7 Other Local Events

3.9.7.1 Invalid Message Received

If the AuthIP GSS_API exchange responder receives an invalid packet that causes an error in request processing, it MUST tear down the corresponding Main Mode state (and Quick Mode state if present).

3.10 Authenticated Firewall Mode

3.10.1 Abstract Data Model

All necessary state information is described in section [3.1.1](#).

3.10.2 Timers

None.

3.10.3 Initialization

None.

3.10.4 Higher-Layer Triggered Events

3.10.4.1 New Connection Initiated

If the *IsAuthenticatedFirewallConnection* flag is set to TRUE in the connection state table entry corresponding to the connection, the first packet of every new connection (that is, the first packet sent by the connection initiator after creating the new entry in the connection state table) MUST be sent twice: initially with IPsec encapsulation and then again without IPsec encapsulation.

Whenever a non-cleartext packet is sent using authenticated firewall mode, the format MUST be as follows:

- If the selected encapsulation in the SAD (section [3.1.1](#)) for the SA associated with the connection ([\[RFC4301\]](#) section 4.4.2.2) is IPSEC_TRANSPORT_AUTH_FW, then the encapsulation format MUST be the standard IPsec ESP transport encapsulation of the original packet, as specified in [\[RFC2406\]](#).
- If the selected encapsulation in the SAD (section [3.1.1](#)) for the SA associated with the connection ([\[RFC4301\]](#) section 4.4.2.2) is IPSEC_TRANSPORT_UDP_AUTH_FW, then the encapsulation format MUST be the standard IPsec UDP ESP transport encapsulation of the packet, as specified in [\[RFC3948\]](#).

3.10.4.2 Negotiation of Authenticated Firewall Encapsulation

To negotiate Authenticated Firewall encapsulation, the initiator MUST include one of the two encapsulation attributes listed below in the SA payload of quick mode (see section [3.4.7.3](#)). The negotiation MUST then proceed as specified in [\[RFC2407\]](#) section 4.5.

The authenticated firewall encapsulation uses these two values for the encapsulation mode attribute:

IPSEC_TRANSPORT_AUTH_FW: 62000

IPSEC_TRANSPORT_UDP_AUTH_FW: 62001

The former signals authenticated firewall mode with ESP encapsulation. The latter signals authenticated firewall mode with UDP-encapsulated. If a NAT was detected, then the latter attribute MUST be used; otherwise, the former attribute MUST be used.

On negotiating an authenticated firewall SA, both peers MUST set the *IsAuthenticatedFWSA* attribute of the SA to TRUE.

3.10.4.3 Sending a Packet on an Existing Connection

If *IsAuthenticatedFirewallConnection* is set to TRUE for this connection, then the packet MUST be sent in the clear with no IPsec encapsulation applied, unless exception conditions where IPsec encapsulation is used as specified in section [3.1.7.7](#) are met. This specifies the sending of data packets by both the initiator and the responder once the connection has been flagged *IsAuthenticatedFirewallConnection* as specified in section [3.1.7.7](#).

3.10.5 Message Processing Rules

3.10.5.1 Responder Receiving an Encapsulated Authenticated Firewall Connection Packet

On receiving an IPSec encapsulation packet, the responder processes the packet as defined in [\[RFC2402\]](#) or [\[RFC2406\]](#) for AH or ESP encapsulation, respectively. If the packet IPSec processing succeeded, and *IsAuthenticatedFWSA* is set to TRUE for the SA that secured that packet (section [3.1.1](#)), then the responder MUST set the *authFWAuthorized* flag in the corresponding entry for this connection in the connection state table to TRUE, and the responder MUST drop this packet.

3.10.5.2 Responder Receiving a Plaintext Authenticated Firewall Connection Packet

When the responder receives any plaintext packet, the responder MUST look up the SA that would secure that packet, as specified in [\[RFC4301\]](#) section 4.4.2.2. If this packet is a non-TCP packet that doesn't match any connection state, it MUST request that the next packet for a given connection be sent doubled. To do this, the responder generates an Internet Control Message Protocol (ICMP) packet as defined in [\[RFC792\]](#) and [\[RFC1122\]](#) section 3.2.2.1. This ICMP packet MUST have the type field set to Destination Unreachable (value 3). The ICMP packet MUST have the code field set to Communication Administratively Prohibited (value 13) as specified in [\[RFC1812\]](#) section 5.2.7.1. All other fields MUST be set as specified in [\[RFC792\]](#) and [\[RFC1122\]](#) section 3.2.2.

If the cleartext packet matches an authFW mode SA, and the connection state table entry for the connection has its *authFWAuthorized* flag set to TRUE, then the packet MUST be accepted as valid, and further IPSec processing MUST NOT be performed on that packet.

On receiving a non-TCP packet, if there is a connection state entry that matches that packet, the per-connection timer MUST be reset to 60 seconds.

3.10.5.3 Initiator Receiving a Plaintext Authenticated Firewall Connection Packet

When the initiator receives any plaintext packet, the initiator MUST look up the SA that would secure that packet, as described in [\[RFC4301\]](#) section 4.4.2.2. If the cleartext packet matches an authFW mode SA, then the packet MUST be accepted as valid and further IPSec processing MUST NOT be performed on that packet.

3.10.5.4 Receiving an ICMP Packet

After receiving an ICMP packet and processing it as specified in [\[RFC792\]](#) and [\[RFC1122\]](#), if the traffic description that is embedded in the ICMP packet matches a connection state table entry for which *IsAuthenticatedFirewallConnection* is set to TRUE, the receiver of the ICMP packet MUST send the next packet on the connection doubled as specified in section [3.10.4.2](#).

3.11 Impersonated SA lookup

3.11.1 Abstract Data Model

All necessary state information is specified in section [3.1.1](#).

3.11.2 Timers

None.

3.11.3 Initialization

None.

3.11.4 Higher-Layer Triggered Events

3.11.4.1 New Connection Initiated

When a new connection is initiated, the initiator MUST use the ImpersonationHandle from the connection's Connection State Table entry to look up the corresponding SA in the SAD, as specified in [\[RFC4301\]](#), section 4.4.2.2. If a corresponding SA is found in the SAD, the IsImpersonatedConnection flag MUST be set to TRUE. Otherwise,

- If the IsImpersonatedConnection flag is already set to TRUE, then the SA MUST be negotiated as specified in [\[RFC4301\]](#), section 4.5.2.
- If the IsImpersonatedConnection flag is set to FALSE, the initiator MUST retry the SA lookup without specifying any ImpersonationHandle, and perform the lookup as specified in [\[RFC4301\]](#), section 4.2.

When the correct SA is found, the initiator MUST process the packet as specified in [\[RFC4301\]](#), section 5.1.

3.11.4.2 Sending a Packet on an Existing Connection

If the IsImpersonatedConnection flag is TRUE in the connection state table entry corresponding to the connection, the ImpersonationHandle from the connection MUST be used to look up the correct SA for the packet in the SAD. See [\[RFC4301\]](#), section 4.4.2.2.

3.11.5 Message Processing Rules

3.11.5.1 Responder Receiving a Packet on an SA

On receiving an IPsec encapsulation packet, the responder MUST process the packet as specified in [\[RFC4301\]](#), section 5.2. If this processing succeeds, and the ImpersonationHandle on the **SA** is not zero, the responder MUST set IsImpersonationConnection to TRUE on the connection entry for this connection.

4 Protocol Examples

4.1 Main Mode - No Extended Mode

The following figure details a main mode (MM) exchange without a Diffie-Hellman exchange where the GSS-API secret is used to generate the keying material.

The exchanges are as shown in the following figure.

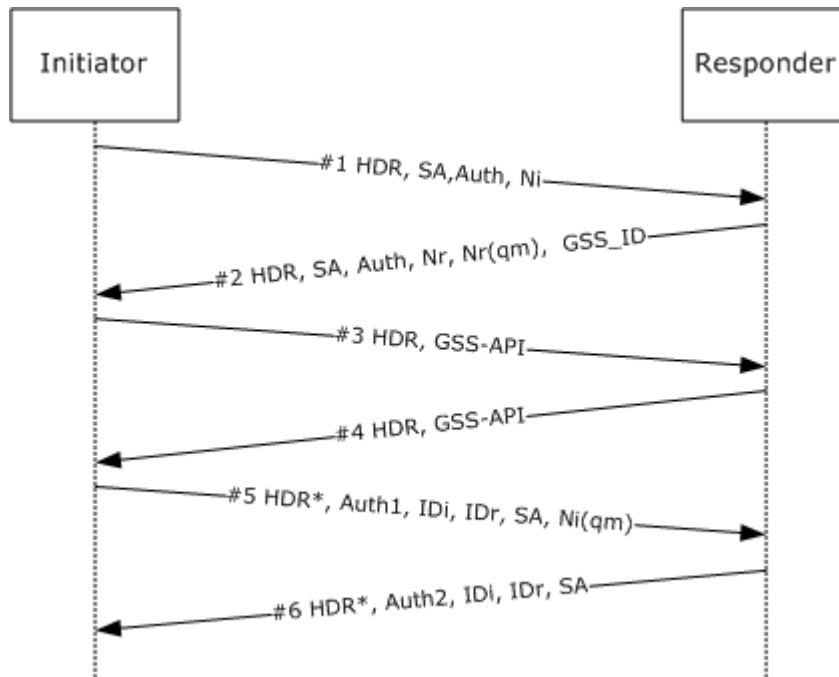


Figure 31: Main mode - no extended mode exchange

Message #1: The initiator sends security association (SA) proposals (Kerberos or TLS), the MM crypto options, and a nonce. Diffie-Hellman is not required, and the initiator does not send a key exchange (KE) payload.

Message #2: The responder looks up the policy based on IP addresses only. It chooses an SA proposal, such as Kerberos with 3DES. The responder also sends its SPN, the MM nonce, and the quick mode (QM) nonce.

Message #3: The initiator calls GSS-API to get a token for the peer SPN. This token is sent unmodified.

Message #4: The responder calls GSS-API on the initiator token. This generates a new token, which the responder sends back. In this example, only one exchange is needed. The responder's GSS-API exchange is done, and a GSS-API cryptographic context is available.

Message #5: The initiator calls GSS-API on the responder token. This succeeds, and the initiator now has a cryptographic context. All the previous payloads are hashed and then signed with the key that is generated by the GSS-API exchange. This is the HAuth1 payload. The initiator includes the traffic selectors (IDi, IDr) for the traffic to be secure on the wire, proposals for encryption or integrity in the QM SA payload, and a nonce.

Message #6: The responder verifies HAuth1 and generates a similar HAuth2. The responder looks up its policy based on the traffic selectors. The responder sends back the traffic selectors and SA proposals that it has chosen. The responder then adds the QM SAs.

When the initiator receives the last packet, it validates HAuth2 and adds its QM SAs. If the last packet that is sent by the responder is lost, the initiator retransmits its last packet. Upon receiving it, the responder resends its last Authenticated Internet Protocol packet.

4.2 Kerberos Extended Mode

The following example shows a Kerberos authentication in extended mode (EM).

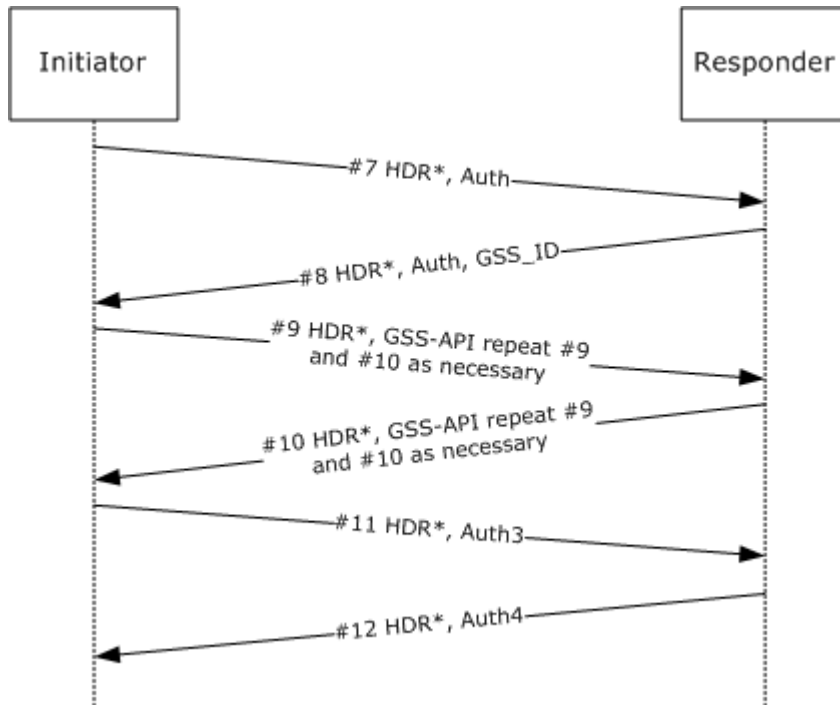


Figure 32: Kerberos extended mode authentication

Message numbering starts on top of the base-mode numbering. This is an example of the extended authentication exchanges between the initiator (section [3.6](#)) and responder (section [3.7](#)).

The following security association (SA) addition rules apply to the initiator and responder.

Initiator:

- The inbound SA is added prior to sending #9.
- The outbound SA is added after processing #10.

Responder:

- The inbound/outbound SAs are added prior to sending #10.

4.3 Extended Mode Authentication Retry

In extended mode (EM), failures are handled by retrying the authentication, if possible. The following example shows an authentication retry.

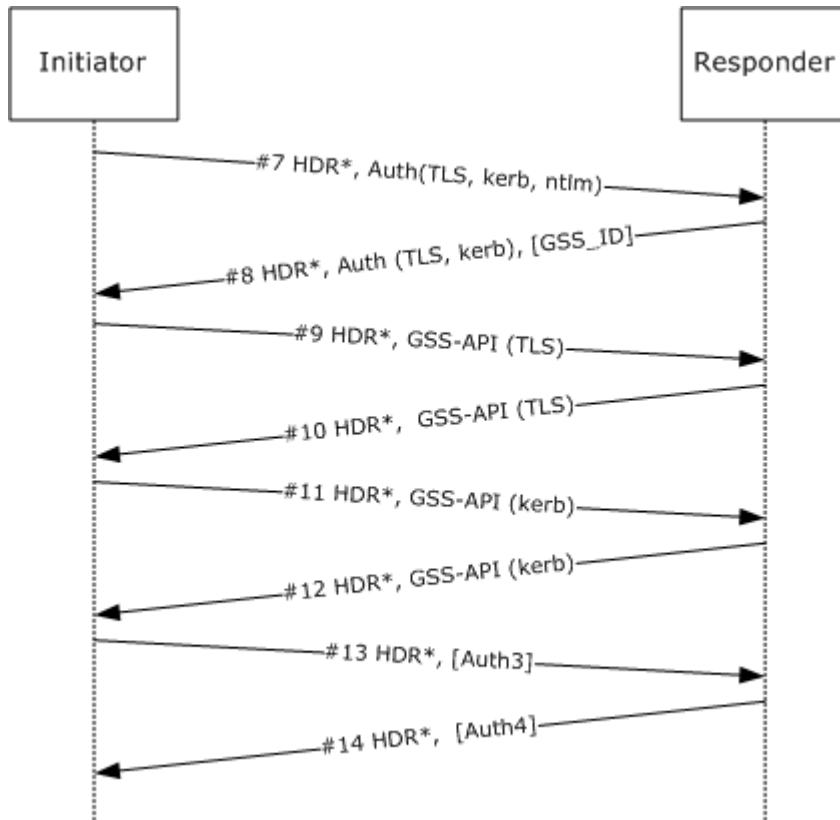


Figure 33: Extended mode authentication retry

In message #7, the initiator proposes TLS, Kerberos, and NTLM authentication protocols. In message #8, the responder accepts only TLS and Kerberos. The initiator begins the TLS exchange in message #9. Failures, if any, that occur during TLS in messages #9 and #10, cause empty GSS-API payloads to be sent. When the initiator constructs message #11, it attempts the next agreed upon authentication method, which is Kerberos. Whenever the initiator begins a new GSS-API exchange, it sets the GSS_NEW_GSS_EXCHANGE bit in the **Flags** field of the GSS-API payload. Only the initiator can begin a new GSS-API exchange. If the responder fails and wants to initiate a new GSS-API exchange, it sets the status field to a nonzero value that corresponds to the error code [19](#) in the next GSS-API payload. This signals the initiator to retry.

5 Security

5.1 Security Considerations for Implementers

The security considerations that are listed for IKEv1 in the relevant RFCs apply to the Authenticated Internet Protocol. In addition, protocol-specific security considerations may apply.

5.1.1 Policy Construction

The Authenticated Internet Protocol supports different authentication methods that do not necessarily offer the same strength. These differences should be taken into account when designing Authenticated Internet Protocol policies in order to minimize the risk of downgrade attacks.

5.1.2 Credential/Identity Protection

When the Authenticated Internet Protocol performs an authentication, it may be necessary for one party to reveal information about its identity to the other party in order to perform the authentication. The type of information that is leaked depends on the authentication method that is used, as described below. Therefore, the choice of supported authentication methods affects the privacy of the authenticating parties.

Kerberos authentication

In a Kerberos authentication exchange, the initiator never has to leak its identity and only members of the trusted domain are able to access the ticket that is sent, assuming the integrity of the Kerberos protocol. The Kerberos responder needs to provide information to the initiator about its identity so that the Kerberos token can be validated; to do this, the responder puts its security principal name (SPN) in the Principal Name field of the GSS_ID payload.

Certificates

As part of a TLS exchange, the responder may pass a list of trusted roots in the clear so that the initiator can select a certificate that is trusted by the responder.

5.2 Index of Security Parameters

Security parameter	Section
Authentication method	1.7
Encryption/authentication algorithms	1.7
Diffie-Hellman	1.7
Target principal name	2.2.2
Key derivation function	3.1

6 Appendix A: Product Behavior

The information in this specification is applicable to the following Microsoft products or supplemental software. References to product versions include released service packs:

- Windows Vista® operating system
- Windows Server® 2008 operating system
- Windows® 7 operating system
- Windows Server® 2008 R2 operating system

Exceptions, if any, are noted below. If a service pack or Quick Fix Engineering (QFE) number appears with the product version, behavior changed in that service pack or QFE. The new behavior also applies to subsequent service packs of the product unless otherwise specified. If a product edition appears with the product version, behavior is different in that product edition.

Unless otherwise specified, any statement of optional behavior in this specification that is prescribed using the terms SHOULD or SHOULD NOT implies product behavior in accordance with the SHOULD or SHOULD NOT prescription. Unless otherwise specified, the term MAY implies that the product does not follow the prescription.

<1> [Section 1.3](#): IKE extensions. Implemented in Windows Vista, Windows Server 2008, Windows 7, and Windows Server 2008 R2. The following [Internet Key Exchange Protocol Extensions](#) (defined in [\[MS-IKEE\]](#)) are supported:

IKE fragmentation

Fast failover

Negotiation discovery

Denial of service protection

<2> [Section 1.7](#): Cryptographic parameters. The Authenticated Internet Protocol is implemented only in Windows Vista, Windows Server 2008, Windows 7, and Windows Server 2008 R2. Microsoft implements the following algorithms.

Message authentication algorithm	Operating systems
NULL [RFC2410]	Windows Vista, Windows Server 2008, Windows 7, and Windows Server 2008 R2
HMAC-SHA1-96 [RFC2404]	Windows Vista, Windows Server 2008, Windows 7, and Windows Server 2008 R2
HMAC-MD5-96 [RFC2403]	Windows Vista, Windows Server 2008, Windows 7, and Windows Server 2008 R2
AES-GMAC [RFC4543]	Windows Server 2008, Windows 7, and Windows Server 2008 R2
SHA-256 [SHA256]	Windows Server 2008, Windows 7, and Windows Server 2008 R2

Encryption algorithm	Operating systems
NULL [RFC2410]	Windows Vista, Windows Server 2008, Windows 7, and Windows Server 2008 R2
DES-CBC [RFC2405]	Windows Vista, Windows Server 2008, Windows 7, and Windows Server 2008 R2
Triple DES-CBC [RFC2451]	Windows Vista, Windows Server 2008, Windows 7, and Windows Server 2008 R2
AES-CBC with key sizes of 128, 192, and 256 bits [RFC3602]	Windows Vista, Windows Server 2008, Windows 7, and Windows Server 2008 R2
AES-GCM with key sizes of 128, 192, and 256 bits [RFC4106]	Windows Server 2008, Windows 7, and Windows Server 2008 R2

Diffie-Hellman	Operating systems
The default 768-bit modular exponential (MODP) group [RFC2409]	Windows Vista, Windows Server 2008, Windows 7, and Windows Server 2008 R2
The alternate 1024-bit MODP group [RFC2409]	Windows Vista, Windows Server 2008, Windows 7, and Windows Server 2008 R2
The 2048-bit MODP group [RFC3526]	Windows Vista, Windows Server 2008, Windows 7, and Windows Server 2008 R2
ECP_256 [ECP]	Windows Vista, Windows Server 2008, Windows 7, and Windows Server 2008 R2
ECP_384 [ECP]	Windows Vista, Windows Server 2008, Windows 7, and Windows Server 2008 R2

<3> Section 1.7: Capability negotiation. Implemented in Windows Vista, Windows Server 2008, Windows 7, and Windows Server 2008 R2. The following vendor IDs are supported by the Microsoft implementation of the Authenticated Internet Protocol.

Operating system version	4-byte version number
Windows Vista	00 00 00 05
Windows Server 2008	00 00 00 06
Windows 7	00 00 00 07
Windows Server 2008 R2	00 00 00 08

Common name	String representation	Wire representation (MD5 hash of string)
Microsoft implementation Windows Vista	"MS NT5 ISAKMPOAKLEY" +version number 5	1E 2B 51 69 05 99 1C 7D 7C 96 FC BF B5 87 E4 61 00 00 00 05
Microsoft implementation Windows Vista SP1, Windows Server 2008	"MS NT5 ISAKMPOAKLEY" +version number 6	1E 2B 51 69 05 99 1C 7D 7C 96 FC BF B5 87 E4 61 00 00 00 06
Microsoft implementation Windows 7	"MS NT5 ISAKMPOAKLEY" +version number 7	1E 2B 51 69 05 99 1C 7D 7C 96 FC BF B5 87 E4 61 00 00 00 07
Microsoft implementation Windows Server 2008 R2	"MS NT5 ISAKMPOAKLEY" +version number 8	1E 2B 51 69 05 99 1C 7D 7C 96 FC BF B5 87 E4 61 00 00 00 08
Kerberos authentication supported [GSS]	"GSSAPI"	62 1B 04 BB 09 88 2A C1 E1 59 35 FE FA 24 AE EE
NLB/MSCS fast failover supported [MS-IKEE]	"Vid-Initial-Contact"	26 24 4D 38 ED DB 61 B3 17 2A 36 E3 D0 CF B8 19
NLB/MSCS fast failover supported [MS-IKEE]	"NLBS_PRESENT"	72 87 2B 95 FC DA 2E B7 08 EF E3 22 11 9B 49 71
Fragmentation avoidance supported [MS-IKEE]	"FRAGMENTATION"	40 48 B7 D5 6E BC E8 85 25 E7 DE 7F 00 D6 C2 D3
NAT-T supported [MS-IKEE]	"RFC 3947"	4A 13 1C 81 07 03 58 45 5C 57 28 F2 0E 95 45 2F
Negotiation discovery supported [MS-IKEE]	"MS-Negotiation Discovery Capable"	FB 1D E3 CD F3 41 B7 EA 16 B7 E5 BE 08 55 F1 20

[<4> Section 1.7:](#) Vendor ID payload. Implemented in Windows Vista, Windows Server 2008, Windows 7, and Windows Server 2008 R2. The following Vendor ID is sent by the Microsoft IKEv1 implementation when the initiator or responder supports both IKEv1 and the Authenticated Internet Protocol.

Common name	String representation	Wire representation (MD5 hash of string)
Authenticated Internet Protocol supported	MS-MamieExists	21 4C A4 FA FF A7 F3 2D 67 48 E5 30 33 95 AE 83

[<5> Section 2.1:](#) UDP ports. Implemented in Windows Vista, Windows Server 2008, Windows 7, and Windows Server 2008 R2. The Authenticated Internet Protocol runs on UDP ports 500 and 4500. The UDP ports are not configurable.

[<6> Section 2.2.3.1:](#) Error codes. Implemented in Windows Vista, Windows Server 2008, Windows 7, and Windows Server 2008 R2. The Authenticated Internet Protocol logs the failure to the Security Event Log. The Authenticated Internet Protocol does not report the error to the application whose network activity triggered the Authenticated Internet Protocol exchange. For more information about these codes, see [\[MS-ERREF\]](#).

[<7> Section 2.2.3.2.2:](#) In Windows Vista, Windows Server 2008, Windows 7, and Windows Server 2008 R2 implementations of the Authenticated Internet Protocol, the responder adds 8 bytes

of **Initialization_Vector** after the seqNUM field if the GSS-API exchange has completed. The presence of the **Initialization_Vector** is indicated by the length of the Crypto payload (16 bytes if the **Initialization_Vector** is present; otherwise, 8 bytes).

<8> [Section 2.2.3.5](#): Error codes. Implemented in Windows Vista, Windows Server 2008, Windows 7, and Windows Server 2008 R2. This field may take on any Windows error-code value. For more information about these codes, see [\[MS-ERREF\]](#).

<9> [Section 3.1](#): Negotiation retransmission timer. Implemented in Windows Vista, Windows Server 2008, Windows 7, and Windows Server 2008 R2. See section [3.1.2](#) and its associated Windows behavior information for details about a Windows implementation of retransmission timers.

<10> [Section 3.1](#): Cryptographic parameters. The Authenticated Internet Protocol is implemented in Windows Vista, Windows Server 2008, Windows 7, and Windows Server 2008 R2 only. Microsoft implements the following algorithms.

Message authentication algorithm	Key length (bytes)	Operating systems
NULL [RFC2410]	N/A	Windows Vista, Windows Server 2008, Windows 7, and Windows Server 2008 R2
HMAC-SHA1-96 [RFC2404]	20	Windows Vista, Windows Server 2008, Windows 7, and Windows Server 2008 R2
HMAC-MD5-96 [RFC2403]	16	Windows Vista, Windows Server 2008, Windows 7, and Windows Server 2008 R2
AES-GMAC with key sizes of 128, 192, and 256 bits [RFC4543]	16, 24, and 32	Windows Server 2008, Windows 7, and Windows Server 2008 R2
SHA-256 [SHA256]	32	Windows Server 2008, Windows 7, and Windows Server 2008 R2

Encryption algorithm	Key length (bytes)	Operating systems
NULL [RFC2410]	N/A	Windows Vista, Windows Server 2008, Windows 7, and Windows Server 2008 R2
DES-CBC [RFC2405]	8	Windows Vista, Windows Server 2008, Windows 7, and Windows Server 2008 R2
Triple DES-CBC [RFC2451]	24	Windows Vista, Windows Server 2008, Windows 7, and Windows Server 2008 R2
AES-CBC with key sizes of 128, 192, and 256 bits [RFC3602]	16, 24, and 32	Windows Vista, Windows Server 2008, Windows 7, and Windows Server 2008 R2
AES-GCM with key sizes of 128, 192, and 256 bits [RFC4106]	16, 24, and 32	Windows Server 2008, Windows 7, and Windows Server 2008 R2

Diffie-Hellman	Operating systems
Default 768-bit MODP group [RFC2409]	Windows Vista, Windows Server 2008, Windows 7, and Windows Server 2008 R2
Alternate 1024-bit MODP group [RFC2409]	Windows Vista, Windows Server 2008, Windows 7, and Windows Server 2008 R2
2048-bit MODP group [RFC3526]	Windows Vista, Windows Server 2008, Windows 7, and Windows Server 2008 R2
ECP_256 [ECP]	Windows Vista, Windows Server 2008, Windows 7, and Windows Server 2008 R2
ECP_384 [ECP]	Windows Vista, Windows Server 2008, Windows 7, and Windows Server 2008 R2

<11> Section 3.1.2: Negotiation retransmission timer, notify retransmission timer, authentication retry timer, responder time-out timer, NAT-T keep-alive timer, QM rekey timer. Implemented in Windows Vista, Windows Server 2008, Windows 7, and Windows Server 2008 R2.

Negotiation retransmission timer: The first retransmission occurs after two seconds. The time-out is doubled for each subsequent retransmission up to a maximum of four retransmissions. In the shutdown phase, one retransmission, at most, is performed as described in section [3.1.7](#).

In Windows 7 and Windows Server 2008 R2, the number of retransmissions of the first negotiation packet sent by the initiator is reduced to 3. Additionally, if in co-existence mode (section [1.7](#)), and the IKEv1 negotiation gets a valid response to its first packet, then AuthIP stops its retransmission timer. If in negotiation discovery mode (see [\[MS-IKEE\]](#) section 1.3.5), and the responder replies with cleartext (TCP or UDP for example), then AuthIP stops its retransmission timer on receiving cleartext for the same connection that caused the initial the AuthIP negotiation.

Notify retransmission timer: The first retransmission occurs after two seconds. The time-out is doubled for each subsequent retransmission up to a maximum of four retransmissions. In the shutdown phase, one retransmission, at most, is performed as described in section [3.1.7](#).

Authentication retry timer: The first authentication retry is triggered within a negotiation when the current authentication method fails and there are remaining authentication methods (or remaining authentication parameters for the current methods) that can be tried before failing the negotiation. The retry timer expires when all existing authentication methods (and all authentication parameters for each configured authentication method) are exhausted. The timers mentioned in the retry state (section [3.1](#)) are explicitly the negotiation retransmission timer on initiator and the responder time-out timer on responder.

Responder time-out timer: The responder deletes its state if it does not receive a message from the initiator within 60 seconds. The responder MUST send a NOTIFY_STATUS notify payload.

NAT-T keep-alive timer: The timer expires after 20 seconds.

QM rekey timer: The timer expires after 60 seconds and all old QM SAs are deleted. The responder MUST send a NOTIFY_STATUS notify payload.

<12> Section 3.2.4: Vendor ID payload. Implemented in Windows Vista, Windows Server 2008, Windows 7, and Windows Server 2008 R2. The following Vendor ID is sent by the Microsoft IKEv1 implementation when the initiator or responder supports both IKEv1 and the Authenticated Internet Protocol.

Common name	String representation	Wire representation (MD5 hash of string)
Authenticated Internet Protocol supported	MS-MamieExists	21 4C A4 FA FF A7 F3 2D 67 48 E5 30 33 95 AE 83

<13> [Section 3.2.5.1](#): **Message ID** field verification. Implemented in Windows Vista, Windows Server 2008, Windows 7 and Windows Server 2008 R2. These operating systems do not verify that the **message ID** field is zero.

<14> [Section 3.3.5.1](#): **Message ID** field verification. Implemented in Windows Vista, Windows Server 2008, Windows 7, and Windows Server 2008 R2. These operating systems do not verify that the **message ID** field is zero.

<15> [Section 3.6.5.1](#): Encrypted flag verification is implemented in Windows Vista, Windows Server 2008, Windows 7, and Windows Server 2008 R2. The Windows Vista, Windows Server 2008, Windows 7, and Windows Server 2008 R2 implementations do not verify that the encrypted flag is not set for payloads denoted as HDR in the payload exchange.

<16> [Section 3.7.5.1](#): Message ID field verification is implemented in Windows Vista, Windows Server 2008, Windows 7, and Windows Server 2008 R2. Windows Vista does not verify that the message ID field is set to one. Windows Server 2008, Windows 7, and Windows Server 2008 R2 verify that the message ID field is one.

<17> [Section 3.8.5.1](#): Encrypted flag verification is implemented in Windows Vista, Windows Server 2008, Windows 7, and Windows Server 2008 R2. The Windows Vista, Windows Server 2008, Windows 7, and Windows Server 2008 R2 implementations do not verify that the encrypted flag is not set for payloads denoted as HDR in the payload exchange.

<18> [Section 3.8.7.1](#): Encrypted flag verification is implemented in Windows Vista, Windows Server 2008, Windows 7, and Windows Server 2008 R2. The Windows Vista, Windows Server 2008, Windows 7, and Windows Server 2008 R2 implementations do not verify that the encrypted flag is not set for payloads denoted as HDR in the payload exchange.

<19> [Section 4.3](#): Error codes. Implemented in Windows Vista, Windows Server 2008, Windows 7, and Windows Server 2008 R2. The Authenticated Internet Protocol logs the failure to the Security Event Log. For more information about these codes, see [\[MS-ERREF\]](#).

7 Change Tracking

This section identifies changes that were made to the [MS-AIPS] protocol document between the May 2011 and June 2011 releases. Changes are classified as New, Major, Minor, Editorial, or No change.

The revision class **New** means that a new document is being released.

The revision class **Major** means that the technical content in the document was significantly revised. Major changes affect protocol interoperability or implementation. Examples of major changes are:

- A document revision that incorporates changes to interoperability requirements or functionality.
- An extensive rewrite, addition, or deletion of major portions of content.
- The removal of a document from the documentation set.
- Changes made for template compliance.

The revision class **Minor** means that the meaning of the technical content was clarified. Minor changes do not affect protocol interoperability or implementation. Examples of minor changes are updates to clarify ambiguity at the sentence, paragraph, or table level.

The revision class **Editorial** means that the language and formatting in the technical content was changed. Editorial changes apply to grammatical, formatting, and style issues.

The revision class **No change** means that no new technical or language changes were introduced. The technical content of the document is identical to the last released version, but minor editorial and formatting changes, as well as updates to the header and footer information, and to the revision summary, may have been made.

Major and minor changes can be described further using the following change types:

- New content added.
- Content updated.
- Content removed.
- New product behavior note added.
- Product behavior note updated.
- Product behavior note removed.
- New protocol syntax added.
- Protocol syntax updated.
- Protocol syntax removed.
- New content added due to protocol revision.
- Content updated due to protocol revision.
- Content removed due to protocol revision.
- New protocol syntax added due to protocol revision.

- Protocol syntax updated due to protocol revision.
- Protocol syntax removed due to protocol revision.
- New content added for template compliance.
- Content updated for template compliance.
- Content removed for template compliance.
- Obsolete document removed.

Editorial changes are always classified with the change type **Editorially updated**.

Some important terms used in the change type descriptions are defined as follows:

- **Protocol syntax** refers to data elements (such as packets, structures, enumerations, and methods) as well as interfaces.
- **Protocol revision** refers to changes made to a protocol that affect the bits that are sent over the wire.

The changes made to this document are listed in the following table. For more information, please contact protocol@microsoft.com.

Section	Tracking number (if applicable) and description	Major change (Y or N)	Change type
1.2 References	Added explanatory statement regarding the removal of the publishing year from Microsoft Open Specification document references.	N	Content updated.

8 Index

A

Abstract data model ([section 3.1.1](#) 33, [section 3.10.1](#) 73)
[Applicability](#) 13
[Auth Payload packet](#) 25
[Authentication retry state machine](#) 29
[AuthIP key material generation](#) 40

C

[Capability negotiation](#) 13
[Change tracking](#) 87
[Crypto Payload 0x85 Encryption Flag Not Set packet](#) 24
[Crypto Payload Encryption Flag Set packet](#) 22

D

Data model - abstract ([section 3.1.1](#) 33, [section 3.10.1](#) 73)

E

Examples
[extended mode authentication retry](#) 79
[Kerberos extended mode](#) 78
[main mode - no extended mode](#) 77
[Exchange state machine](#) 29
[Extended mode authentication retry example](#) 79

F

[Fields - vendor-extensible](#) 14
[Format of the Generic Payload Header for the Crypto Payload packet](#) 24

G

[Generic Payload Header packet](#) 19
[Glossary](#) 8
[GSS API Payload packet](#) 20
[GSS ID 0x86 Payload packet](#) 24

H

Higher-layer triggered events
[negotiation of authenticated firewall encapsulation](#) 74
[new connection initiated](#) 74
[overview](#) 37
[sending a packet on an existing connection](#) 74

I

Implementer - security considerations
[credential protection](#) 80
[identity protection](#) 80

[overview](#) 80
[policy construction](#) 80
[Index of security parameters](#) 80
[Informative references](#) 11
Initialization ([section 3.1.3](#) 37, [section 3.10.3](#) 74)
[Introduction](#) 8
[ISAKMP Header packet](#) 16

K

[Kerberos extended mode example](#) 78

L

[Local events](#) 39

M

[Main mode - no extended mode example](#) 77
Message processing
[connection state management](#) 42
[initiator receiving - plaintext authenticated firewall connection packet](#) 75
[overview](#) 38
[receiving ICMP packet](#) 75
responder receiving
[encapsulated authenticated firewall connection packet](#) 75
[plaintext authenticated firewall connection packet](#) 75
Messages
[payload types](#) 20
[transport](#) 16

N

[Normative references](#) 9
[Notation](#) 29
[Notify Acquire packet](#) 28
[Notify Payload packet](#) 26

O

[Overview \(synopsis\)](#) 12

P

[Parameters - security index](#) 80
[Payload types](#) 20
[Preconditions](#) 13
[Prerequisites](#) 13
[Product behavior](#) 81

R

References
[informative](#) 11
[normative](#) 9

[Relationship to other protocols](#) 13

S

Security

implementer considerations

[credential protection](#) 80

[identity protection](#) 80

[overview](#) 80

[policy construction](#) 80

[parameter index](#) 80

Sequencing rules

[connection state management](#) 42

[overview](#) 38

[Standards assignments](#) 14

State machines

[authentication retry](#) 29

[exchange](#) 29

T

Timer events

[connection state](#) 39

[MM SA lifetime](#) 39

[negotiation retransmission timer](#) 39

[notify retransmission timer](#) 39

[QM rekey timer](#) 39

[responder time-out timer](#) 39

Timers ([section 3.1.2](#) 36, [section 3.10.2](#) 73)

[Tracking changes](#) 87

[Transport](#) 16

Triggered events

[negotiation of authenticated firewall](#)

[encapsulation](#) 74

[new connection initiated](#) 74

[overview](#) 37

[sending a packet on an existing connection](#) 74

V

[Vendor-extensible fields](#) 14

[Versioning](#) 13