

[MS-ADMINS]: Administration Web Service Protocol Specification

Intellectual Property Rights Notice for Open Specifications Documentation

- **Technical Documentation.** Microsoft publishes Open Specifications documentation for protocols, file formats, languages, standards as well as overviews of the interaction among each of these technologies.
- **Copyrights.** This documentation is covered by Microsoft copyrights. Regardless of any other terms that are contained in the terms of use for the Microsoft website that hosts this documentation, you may make copies of it in order to develop implementations of the technologies described in the Open Specifications and may distribute portions of it in your implementations using these technologies or your documentation as necessary to properly document the implementation. You may also distribute in your implementation, with or without modification, any schema, IDL's, or code samples that are included in the documentation. This permission also applies to any documents that are referenced in the Open Specifications.
- **No Trade Secrets.** Microsoft does not claim any trade secret rights in this documentation.
- **Patents.** Microsoft has patents that may cover your implementations of the technologies described in the Open Specifications. Neither this notice nor Microsoft's delivery of the documentation grants any licenses under those or any other Microsoft patents. However, a given Open Specification may be covered by Microsoft's Open Specification Promise (available here: <http://www.microsoft.com/interop/osp>) or the Community Promise (available here: <http://www.microsoft.com/interop/cp/default.msp>). If you would prefer a written license, or if the technologies described in the Open Specifications are not covered by the Open Specifications Promise or Community Promise, as applicable, patent licenses are available by contacting iplq@microsoft.com.
- **Trademarks.** The names of companies and products contained in this documentation may be covered by trademarks or similar intellectual property rights. This notice does not grant any licenses under those rights.
- **Fictitious Names.** The example companies, organizations, products, domain names, e-mail addresses, logos, people, places, and events depicted in this documentation are fictitious. No association with any real company, organization, product, domain name, email address, logo, person, place, or event is intended or should be inferred.

Reservation of Rights. All other rights are reserved, and this notice does not grant any rights other than specifically described above, whether by implication, estoppel, or otherwise.

Tools. The Open Specifications do not require the use of Microsoft programming tools or programming environments in order for you to develop an implementation. If you have access to Microsoft programming tools and environments you are free to take advantage of them. Certain Open Specifications are intended for use in conjunction with publicly available standard specifications and network programming art, and assumes that the reader either is familiar with the aforementioned material or has immediate access to it.

Revision Summary

Date	Revision History	Revision Class	Comments
04/04/2008	0.1		Initial Availability
06/27/2008	1.0	Major	Revised and edited the technical content
10/06/2008	1.01	Editorial	Revised and edited the technical content
12/12/2008	1.02	Editorial	Revised and edited the technical content
07/13/2009	1.03	Major	Revised and edited the technical content
08/28/2009	1.04	Editorial	Revised and edited the technical content
11/06/2009	1.05	Editorial	Revised and edited the technical content
02/19/2010	2.0	Minor	Updated the technical content
03/31/2010	2.01	Editorial	Revised and edited the technical content
04/30/2010	2.02	Editorial	Revised and edited the technical content
06/07/2010	2.03	Editorial	Revised and edited the technical content
06/29/2010	2.04	Editorial	Changed language and formatting in the technical content.
07/23/2010	2.04	No change	No changes to the meaning, language, or formatting of the technical content.
09/27/2010	2.04	No change	No changes to the meaning, language, or formatting of the technical content.
11/15/2010	2.04	No change	No changes to the meaning, language, or formatting of the technical content.
12/17/2010	2.04	No change	No changes to the meaning, language, or formatting of the technical content.
03/18/2011	2.04	No change	No changes to the meaning, language, or formatting of the technical content.
06/10/2011	2.04	No change	No changes to the meaning, language, or formatting of the technical content.

Table of Contents

1	Introduction	5
1.1	Glossary	5
1.2	References.....	5
1.2.1	Normative References.....	5
1.2.2	Informative References	6
1.3	Protocol Overview (Synopsis)	6
1.4	Relationship to Other Protocols.....	6
1.5	Prerequisites/Preconditions	7
1.6	Applicability Statement.....	7
1.7	Versioning and Capability Negotiation.....	7
1.8	Vendor-Extensible Fields.....	7
1.9	Standards Assignments	7
2	Messages.....	8
2.1	Transport.....	8
2.2	Common Message Syntax	8
2.2.1	Namespaces	8
2.2.2	Messages	8
2.2.3	Elements.....	8
2.2.4	Complex Types	9
2.2.4.1	SOAPFaultDetails.....	9
2.2.5	Simple Types.....	9
2.2.6	Attributes.....	9
2.2.7	Groups.....	9
2.3	Directory Service Schema Elements	9
3	Protocol Details.....	10
3.1	Windows SharePoint Services Server Details	10
3.1.1	Abstract Data Model	10
3.1.2	Timers	10
3.1.3	Initialization	11
3.1.4	Message Processing Events and Sequencing Rules.....	11
3.1.4.1	CreateSite	11
3.1.4.1.1	Messages	11
3.1.4.1.1.1	CreateSiteSoapIn	11
3.1.4.1.1.2	CreateSiteSoapOut	12
3.1.4.1.2	Elements.....	12
3.1.4.1.2.1	CreateSite	12
3.1.4.1.2.2	CreateSiteResponse	13
3.1.4.2	DeleteSite.....	13
3.1.4.2.1	Messages	14
3.1.4.2.1.1	DeleteSiteSoapIn.....	14
3.1.4.2.1.2	DeleteSiteSoapOut	14
3.1.4.2.2	Elements.....	14
3.1.4.2.2.1	DeleteSite	14
3.1.4.2.2.2	DeleteSiteResponse	14
3.1.4.3	GetLanguages	14
3.1.4.3.1	Messages	15
3.1.4.3.1.1	GetLanguagesSoapIn	15
3.1.4.3.1.2	GetLanguagesSoapOut.....	15

3.1.4.3.2	Elements.....	15
3.1.4.3.2.1	GetLanguages	15
3.1.4.3.2.2	GetLanguagesResponse.....	15
3.1.4.4	RefreshConfigCache	16
3.1.4.4.1	Messages	16
3.1.4.4.1.1	RefreshConfigCacheSoapIn	16
3.1.4.4.1.2	RefreshConfigCacheSoapOut	16
3.1.4.4.2	Elements.....	17
3.1.4.4.2.1	RefreshConfigCache	17
3.1.4.4.2.2	RefreshConfigCacheResponse.....	17
3.1.4.4.3	Complex Types	17
3.1.4.4.4	Simple Types.....	17
3.1.4.4.5	Attributes.....	17
3.1.4.4.6	Groups.....	17
3.1.4.4.7	Attribute Groups	17
3.1.5	Timer Events	17
3.1.6	Other Local Events	18
4	Protocol Examples.....	19
4.1	CreateSite	19
4.2	DeleteSite.....	19
4.3	GetLanguages	20
5	Security.....	21
5.1	Security Considerations for Implementers.....	21
5.2	Index of Security Parameters	21
6	Appendix A: Full WSDL	22
7	Appendix B: Product Behavior	26
8	Change Tracking.....	27
9	Index	28

1 Introduction

This document specifies the Administration Web Service Protocol. This protocol enables a protocol client to create and delete Web sites and to retrieve information about the languages supported by a Web site.

1.1 Glossary

The following terms are defined in [\[MS-GLOS\]](#):

GUID
language code identifier (LCID)

The following terms are defined in [\[MS-OFCGLOS\]](#):

configuration database
portal site
site
site collection
site definition
site template
SOAP action
SOAP body
SOAP fault
Uniform Resource Locator (URL)
user name
Web application
Web Services Description Language (WSDL)
WSDL operation
XML namespace
XML schema

The following terms are specific to this document:

MAY, SHOULD, MUST, SHOULD NOT, MUST NOT: These terms (in all caps) are used as described in [\[RFC2119\]](#). All statements of optional behavior use either MAY, SHOULD, or SHOULD NOT.

1.2 References

1.2.1 Normative References

We conduct frequent surveys of the normative references to assure their continued availability. If you have any issue with finding a normative reference, please contact dochelp@microsoft.com. We will assist you in finding the relevant information. Please check the archive site, <http://msdn2.microsoft.com/en-us/library/E4BD6494-06AD-4aed-9823-445E921C9624>, as an additional source.

[MS-LCID] Microsoft Corporation, "[Windows Language Code Identifier \(LCID\) Reference](#)".

[MS-SITESS] Microsoft Corporation, "[Sites Web Service Protocol Specification](#)".

[MS-WSSTS] Microsoft Corporation, "[Windows SharePoint Services Technical Specification](#)".

[RFC2119] Bradner, S., "Key words for use in RFCs to Indicate Requirement Levels", BCP 14, RFC 2119, March 1997, <http://www.rfc-editor.org/rfc/rfc2119.txt>

[RFC2616] Fielding, R., Gettys, J., Mogul, J., et al., "Hypertext Transfer Protocol -- HTTP/1.1", RFC 2616, June 1999, <http://www.ietf.org/rfc/rfc2616.txt>

[SOAP1.1] Box, D., Ehnebuske, D., Kakivaya, G., et al., "Simple Object Access Protocol (SOAP) 1.1", May 2000, <http://www.w3.org/TR/2000/NOTE-SOAP-20000508/>

[SOAP1.2/1] Gudgin, M., Hadley, M., Mendelsohn, N., Moreau, J., and Nielsen, H.F., "SOAP Version 1.2 Part 1: Messaging Framework", W3C Recommendation, June 2003, <http://www.w3.org/TR/2003/REC-soap12-part1-20030624>

[SOAP1.2/2] Gudgin, M., Hadley, M., Mendelsohn, N., Moreau, J., and Nielsen, H.F., "SOAP Version 1.2 Part 2: Adjuncts", W3C Recommendation, June 2003, <http://www.w3.org/TR/2003/REC-soap12-part2-20030624>

[WSDL] Christensen, E., Curbera, F., Meredith, G., and Weerawarana, S., "Web Services Description Language (WSDL) 1.1", W3C Note, March 2001, <http://www.w3.org/TR/2001/NOTE-wsdl-20010315>

[XMLNS] Bray, T., Hollander, D., Layman, A., et al., Eds., "Namespaces in XML 1.0 (Third Edition)", W3C Recommendation, December 2009, <http://www.w3.org/TR/2009/REC-xml-names-20091208/>

[XMLSCHEMA1] Thompson, H.S., Ed., Beech, D., Ed., Maloney, M., Ed., and Mendelsohn, N., Ed., "XML Schema Part 1: Structures", W3C Recommendation, May 2001, <http://www.w3.org/TR/2001/REC-xmlschema-1-20010502/>

[XMLSCHEMA2] Biron, P.V., Ed. and Malhotra, A., Ed., "XML Schema Part 2: Datatypes", W3C Recommendation, May 2001, <http://www.w3.org/TR/2001/REC-xmlschema-2-20010502/>

1.2.2 Informative References

[MS-GLOS] Microsoft Corporation, "[Windows Protocols Master Glossary](#)".

[MS-OFCGLOS] Microsoft Corporation, "[Microsoft Office Master Glossary](#)".

[RFC2818] Rescorla, E., "HTTP Over TLS", RFC 2818, May 2000, <http://www.ietf.org/rfc/rfc2818.txt>

1.3 Protocol Overview (Synopsis)

This protocol allows a protocol client to create or delete a **site collection** and to retrieve information about which languages are supported by a site collection.

1.4 Relationship to Other Protocols

This protocol uses the SOAP messaging protocol for formatting requests and responses as described either in [\[SOAP1.1\]](#) or in [\[SOAP1.2/1\]](#) and [\[SOAP1.2/2\]](#). It transmits these messages using the HTTP protocol as described in [\[RFC2616\]](#) or the HTTPS protocol as described in [\[RFC2818\]](#).

The following diagram shows the underlying messaging and transport stack that the protocol uses:

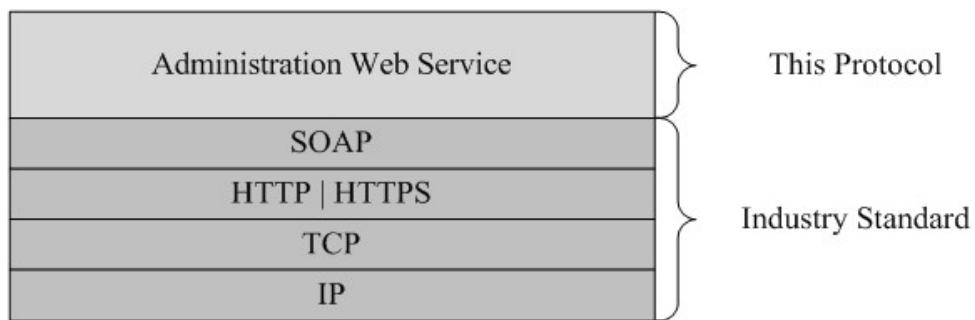


Figure 1: This protocol in relation to other protocols

1.5 Prerequisites/Preconditions

This protocol operates against a **site(2)** that is identified by a **URL** that is known by protocol clients. The protocol server endpoint is formed by appending `"/_vti_adm/admin.asmx"` to the URL of the site, for example `http://www.contoso.com/Repository/_vti_adm/admin.asmx`.

This protocol assumes that authentication has been performed by the underlying protocols.

1.6 Applicability Statement

This protocol is applicable in scenarios where managing site collections is required.

1.7 Versioning and Capability Negotiation

This document covers versioning issues in the following areas:

Supported Transports: This protocol uses multiple transports with SOAP as specified in section [2.1](#), Transport.

1.8 Vendor-Extensible Fields

None.

1.9 Standards Assignments

None.

2 Messages

2.1 Transport

Protocol servers **MUST** support SOAP over HTTP. Protocol servers **SHOULD** additionally support SOAP over HTTPS for securing communication with clients.

Protocol messages **MUST** be formatted as specified either in [\[SOAP1.1\]](#), section 4 "SOAP Envelope" or in [\[SOAP1.2/1\]](#), section 5 "SOAP Message Construct." Protocol server faults **MUST** be returned either using HTTP Status Codes as specified in [\[RFC2616\]](#), section 10 "Status Code Definitions" or using **SOAP faults** as specified either in [\[SOAP1.1\]](#), section 4.4 "SOAP Fault" or in [\[SOAP1.2/1\]](#), section 5.4 "SOAP Fault."

2.2 Common Message Syntax

This section contains common structures used by this protocol. The syntax of the structures uses XML Schema, as specified in [\[XMLSCHEMA1\]](#) and [\[XMLSCHEMA2\]](#), and Web Services Description Language, as specified in [\[WSDL\]](#).

2.2.1 Namespaces

This protocol specifies and references **XML namespaces** using the mechanisms specified in [\[XMLNS\]](#). Although this document associates a prefix for each XML namespace that is used, the choice of any particular prefix is implementation-specific and not significant for interoperability.

Prefix	Namespace URI	Reference
soap	http://schemas.xmlsoap.org/wsdl/soap/	[SOAP1.1]
tns	http://schemas.microsoft.com/sharepoint/soap/	
s	http://www.w3.org/2001/XMLSchema	[XMLSCHEMA1] [XMLSCHEMA2]
soap12	http://schemas.xmlsoap.org/wsdl/soap12/	[SOAP1.2/1] [SOAP1.2/2]
(none)	http://schemas.microsoft.com/sharepoint/soap/	
wsdl	http://schemas.xmlsoap.org/wsdl/	[WSDL]
mime	http://schemas.xmlsoap.org/wsdl/mime/	[WSDL]
s1	http://microsoft.com/wsdl/types/	
tm	http://microsoft.com/wsdl/mime/textMatching/	
http	http://schemas.xmlsoap.org/wsdl/http/	[RFC2616]
soapenc	http://schemas.xmlsoap.org/soap/encoding/	[SOAP1.2/1] [SOAP1.2/2]

2.2.2 Messages

None.

2.2.3 Elements

This specification does not define any common XML Schema element definitions.

2.2.4 Complex Types

2.2.4.1 SOAPFaultDetails

The details of a SOAP fault.

```
<s:schema xmlns:s="http://www.w3.org/2001/XMLSchema" targetNamespace="http://schemas.microsoft.com/sharepoint/soap">
  <s:complexType name="SOAPFaultDetails">
    <s:sequence>
      <s:element name="errorstring" type="s:string"/>
      <s:element name="errorcode" type="s:string" minOccurs="0"/>
    </s:sequence>
  </s:complexType>
</s:schema>
```

errorstring: A human-readable text explaining the application-level fault.

errorcode: The hexadecimal representation of a 4-byte result code. The format inside the string MUST be 0xAAAAAAAA.

2.2.5 Simple Types

This specification does not define any common XML Schema simple type definitions.

2.2.6 Attributes

This specification does not define any common XML Schema attribute definitions.

2.2.7 Groups

This specification does not define any common XML Schema group definitions.

2.3 Directory Service Schema Elements

None.

3 Protocol Details

The client side of this protocol is simply a pass-through. That is, no additional timers or other state is required on the client side of this protocol. Calls made by the higher-layer protocol or application are passed directly to the transport, and the results returned by the transport are passed directly back to the higher-layer protocol or application.

Except where specified, protocol clients SHOULD interpret HTTP Status Codes returned by the protocol server as specified in [\[RFC2616\]](#), section 10 "Status Code Definitions."

This protocol allows protocol servers to notify protocol clients of application-level faults using SOAP faults. This protocol allows protocol servers to provide additional details for SOAP faults by including a **detail** element as specified either in [\[SOAP1.1\]](#), section 4.4 "SOAP Fault" or [\[SOAP1.2/1\]](#), section 5.4 "SOAP Fault" that conforms to the **XML schema** of the **SOAPFaultDetails** complex type specified in section [2.2.4.1](#). Except where specified, these SOAP faults are not significant for interoperability, and protocol clients can interpret them in an implementation-specific manner.

This protocol allows protocol servers to perform implementation-specific authorization checks and to notify protocol clients of authorization faults either using HTTP status codes or SOAP faults as specified previously in this section.

3.1 Windows SharePoint Services Server Details

The following diagram describes the communication between the protocol client and the protocol server:

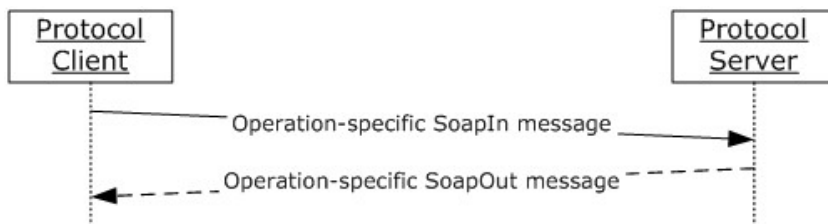


Figure 2: Message exchange between client and server

3.1.1 Abstract Data Model

This section describes a conceptual model of possible data organization that an implementation maintains to participate in this protocol. The described organization is provided to facilitate the explanation of how the protocol behaves. This document does not mandate that implementations adhere to this model as long as their external behavior is consistent with that described in this document.

There is a list of **site definitions** supported by this protocol server. The protocol client can customize a site to create custom templates. The protocol server maintains a mapping between a custom template and its site definition.

For an overview of site, site collection and site definition and protocol server in general, see [\[MS-WSSTS\]](#) section 2.1.2.6 Site, [\[MS-WSSTS\]](#) section 2.1.2.5 Site Collection, and [\[MS-WSSTS\]](#) section 2.1.3.1 Site Definition.

3.1.2 Timers

None.

3.1.3 Initialization

None.

3.1.4 Message Processing Events and Sequencing Rules

The following table summarizes the list of **WSDL operations** defined in this specification.

Operation	Description
CreateSite	Creates a site collection.
DeleteSite	Deletes the specified site collection.
GetLanguages	Returns information about the languages used in the protocol server deployment.
RefreshConfigCache	This operation does nothing and is now obsolete.

3.1.4.1 CreateSite

This operation creates a site collection.

```
<wsdl:operation name="CreateSite">
  <wsdl:input message="CreateSiteSoapIn" />
  <wsdl:output message="CreateSiteSoapOut" />
</wsdl:operation>
```

The client sends a **CreateSiteSoapIn** request message and the server responds with a **CreateSiteSoapOut** response message.

3.1.4.1.1 Messages

3.1.4.1.1.1 CreateSiteSoapIn

The request message that initiates the creation of the site collection.

The **SOAP action** value of the message is as follows:

```
http://schemas.microsoft.com/sharepoint/soap/CreateSite
```

The **SOAP body** contains a **CreateSite** element. The request message is governed by the following rules:

- The absolute URL of the site collection to be created **MUST** be included in the request message.
- If the URL is missing, the server **MUST** return a SOAP fault.
- If the URL is not valid, the server **MUST** return a SOAP fault.
- If the URL already exists, the server **MUST** return a SOAP fault.
- If the **LCID** is not installed, then the server **MUST** return a SOAP fault with error code 0x8102005e.

- If **WebTemplate** is not empty, and if it is not available in the list of templates and it is not a custom template, then the server MUST return a SOAP fault.
- The valid **OwnerLogin** MUST be included in the request message.
- If **OwnerLogin** is not an existing domain user account, the server MUST return a SOAP fault with error code 0x80131600.

3.1.4.1.1.2 CreateSiteSoapOut

The response message in reply to the request initiated with the **CreateSiteSoapIn** message to create a site collection.

The SOAP action value of the message is as follows:

```
http://schemas.microsoft.com/sharepoint/soap/CreateSite
```

The SOAP body contains a **CreateSiteResponse** element.

3.1.4.1.2 Elements

3.1.4.1.2.1 CreateSite

Creates a site collection.

```
<s:element name="CreateSite">
  <s:complexType>
    <s:sequence>
      <s:element name="Url" type="s:string" minOccurs="1"/>
      <s:element name="Title" type="s:string" minOccurs="0"/>
      <s:element name="Description" type="s:string" minOccurs="0"/>
      <s:element name="Lcid" type="s:int" minOccurs="1"/>
      <s:element name="WebTemplate" type="s:string" minOccurs="0"/>
      <s:element name="OwnerLogin" type="s:string" minOccurs="1"/>
      <s:element name="OwnerName" type="s:string" minOccurs="0"/>
      <s:element name="OwnerEmail" type="s:string" minOccurs="0"/>
      <s:element name="PortalUrl" type="s:string" minOccurs="0"/>
      <s:element name="PortalName" type="s:string" minOccurs="0"/>
    </s:sequence>
  </s:complexType>
</s:element>
```

Url: The absolute URL of the site collection. It MUST be formatted as either `http://ServerName:PortNumber/sites/SiteCollectionName` or `http://ServerName/sites/SiteCollectionName`. Its maximum length, not including `http://ServerName`, is 128 characters. If it is missing or absent, the server MUST return a SOAP fault. **PortNumber** in the first format MUST be either 80 or the port number used by administration Web service on the protocol server.

Title: The display name of the site collection. It MUST be less than or equal to 255 characters. If nothing is specified, the site will not have a title.

Description: A description of the site collection. It MUST be less than or equal to 255 characters. If nothing is specified, the site will not have a description.

Lcid: A valid LCID as specified in [\[MS-LCID\]](#), that specifies the language that is used in the site collection. If it is missing, the server MUST return a SOAP fault.

WebTemplate: The name of the **site template** to use when creating the site collection.

GetSiteTemplates in [\[MS-SITESS\]](#) section 3.1.4.2 can be used to get a list of site template. If no template is specified, then no template will be applied to the site at creation time.

OwnerLogin: The **user name** of the site collection owner. It MUST be less than or equal to 255 characters. [<1>](#) If it is missing, the server MUST return a SOAP fault.

OwnerName: The display name of the owner. It MUST be less than or equal to 255 characters. If it is not specified, the name will be taken from the user database entry corresponding to the owner user.

OwnerEmail: The e-mail address of the owner. It MUST be less than or equal to 255 characters. If it is not specified, the e-mail will be taken from the user database entry corresponding to the owner user.

PortalUrl: The URL of the **portal site** for the site collection. It MUST be less than or equal to 260 characters. If nothing is specified, no portal URL will be set in the database. There is no URL validation performed on this element other than the check for its existence. If the URL is absent or empty, no portal URL will be set in the database.

PortalName: The name of the portal site for the site collection. It MUST be less than or equal to 255 characters. If nothing is specified, no portal name will be set in the database.

3.1.4.1.2.2 CreateSiteResponse

CreateSiteResponse is returned as the response to the **CreateSiteRequest** message.

```
<s:element name="CreateSiteResponse">
  <s:complexType>
    <s:sequence>
      <s:element name="CreateSiteResult" type="s:string" minOccurs="0"/>
    </s:sequence>
  </s:complexType>
</s:element>
```

CreateSiteResult: Specifies the URL of the new site collection.

3.1.4.2 DeleteSite

This operation deletes the specified site collection.

```
<wsdl:operation name="DeleteSite">
  <wsdl:input message="DeleteSiteSoapIn" />
  <wsdl:output message="DeleteSiteSoapOut" />
</wsdl:operation>
```

The client sends a **DeleteSiteSoapIn** request message and the server responds with a **DeleteSiteSoapOut** response message.

- The request message MUST contain the absolute URL of the site collection to be deleted.

3.1.4.2.1 Messages

3.1.4.2.1.1 DeleteSiteSoapIn

The message requesting deletion of the site collection.

The SOAP action value of the message is as follows:

```
http://schemas.microsoft.com/sharepoint/soap/DeleteSite
```

The SOAP body contains a **DeleteSite** element.

3.1.4.2.1.2 DeleteSiteSoapOut

The response message reply to the request initiated with the **DeleteSiteSoapIn** message to delete the site collection.

The SOAP action value of the message is as follows:

```
http://schemas.microsoft.com/sharepoint/soap/DeleteSite
```

The SOAP body contains a **DeleteSiteResponse** element.

3.1.4.2.2 Elements

3.1.4.2.2.1 DeleteSite

Deletes the specified site collection.

```
<s:element name="DeleteSite">
  <s:complexType>
    <s:sequence>
      <s:element name="Url" type="s:string" minOccurs="1"/>
    </s:sequence>
  </s:complexType>
</s:element>
```

Url: The absolute URL of the site collection to be deleted.

3.1.4.2.2.2 DeleteSiteResponse

DeleteSiteResponse is returned as the response to the **DeleteSiteRequest**.

```
<s:element name="DeleteSiteResponse" <s:complexType/></s:element>
```

3.1.4.3 GetLanguages

Returns LCID values that specify the languages used in the protocol server deployment.

```
<wsdl:operation name="GetLanguages">
```

```

        <wsdl:input message="GetLanguagesSoapIn" />
        <wsdl:output message="GetLanguagesSoapOut" />
    </wsdl:operation>

```

The client sends a **GetLanguagesSoapIn** request message and the server responds with a **GetLanguagesSoapOut** response message.

3.1.4.3.1 Messages

3.1.4.3.1.1 GetLanguagesSoapIn

Provides the request message to obtain LCID values.

The SOAP action value of the message is as follows:

```
http://schemas.microsoft.com/sharepoint/soap/GetLanguages
```

The SOAP body contains a **GetLanguages** element.

3.1.4.3.1.2 GetLanguagesSoapOut

The response message to the LCID request.

The SOAP action value of the message is as follows:

```
http://schemas.microsoft.com/sharepoint/soap/GetLanguages
```

The SOAP body contains a **GetLanguagesResponse** element.

3.1.4.3.2 Elements

3.1.4.3.2.1 GetLanguages

GetLanguages returns LCID values that specify the languages used in the protocol server deployment.

```

<s:element name="GetLanguages">
  <s:complexType/>
</s:element>

```

3.1.4.3.2.2 GetLanguagesResponse

GetLanguagesResponse is returned as the response message in reply to the **GetLanguagesRequest** message.

```

<s:element name="GetLanguagesResponse">
  <s:complexType>
    <s:sequence>
      <s:element name="GetLanguagesResult" minOccurs="1">
        <s:complexType>

```

```

    <s:sequence>
      <s:element name="Languages">
        <s:complexType>
          <s:sequence>
            <s:element maxOccurs="unbounded" name="LCID" type="s:int" />
          </s:sequence>
        </s:complexType>
      </s:element>
    </s:sequence>
  </s:complexType>
</s:element>
</s:sequence>
</s:complexType>
</s:element>

```

GetLanguagesResult: Provides the locale identifiers (LCIDs) of languages used in the deployment.

3.1.4.4 RefreshConfigCache

This operation does nothing and is obsolete. **RefreshConfigCache** SHOULD NOT [<2>](#) be used.

```

<wsdl:operation name="RefreshConfigCache">
  <wsdl:input message="RefreshConfigCacheSoapIn" />
  <wsdl:output message="RefreshConfigCacheSoapOut" />
</wsdl:operation>

```

The client sends a **RefreshConfigCacheSoapIn** request message and the server responds with a **RefreshConfigCacheSoapOut** response message.

3.1.4.4.1 Messages

3.1.4.4.1.1 RefreshConfigCacheSoapIn

The response message reply to the request initiated with the **RefreshConfigCacheSoapIn** message is obsolete.

The SOAP action value of the message is as follows:

```
http://schemas.microsoft.com/sharepoint/soap/RefreshConfigCache
```

The SOAP body contains a **RefreshConfigCache** element.

3.1.4.4.1.2 RefreshConfigCacheSoapOut

RefreshConfigCacheSoapOut does nothing and is obsolete.

The SOAP action value of the message is:

```
http://schemas.microsoft.com/sharepoint/soap/RefreshConfigCache
```

The SOAP body contains a **RefreshConfigCacheResponse** element.

3.1.4.4.2 Elements

3.1.4.4.2.1 RefreshConfigCache

This element does nothing and is obsolete.

```
<s:element name="RefreshConfigCache">
  <s:complexType>
    <s:sequence>
      <s:element name="VirtualServerId" type="s1:guid"/>
      <s:element name="AdminGroupChanged" type="s:boolean"/>
    </s:sequence>
  </s:complexType>
</s:element>
```

VirtualServerId: The **GUID** for **Web application**.

AdminGroupChanged: Set to "true" to specify that the administrator group has changed; otherwise, "false".

3.1.4.4.2.2 RefreshConfigCacheResponse

RefreshConfigCacheResponse does nothing and is obsolete.

```
<s:element name="RefreshConfigCacheResponse">
  <s:complexType/>
</s:element>
```

3.1.4.4.3 Complex Types

None.

3.1.4.4.4 Simple Types

None.

3.1.4.4.5 Attributes

None.

3.1.4.4.6 Groups

None.

3.1.4.4.7 Attribute Groups

None.

3.1.5 Timer Events

None.

3.1.6 Other Local Events

None.

4 Protocol Examples

4.1 CreateSite

The following example demonstrates the protocol client requests and protocol server responses from the Administration Web Service Protocol to create a site collection.

The protocol client sends a **CreateSite** request to create a site collection.

```
<?xml version="1.0" encoding="utf-8"?><soap:Envelope
xmlns:soap="http://schemas.xmlsoap.org/soap/envelope/"
xmlns:xsi="http://www.w3.org/2001/XMLSchema-instance"
xmlns:xsd="http://www.w3.org/2001/XMLSchema"><soap:Body><CreateSite
xmlns="http://schemas.microsoft.com/sharepoint/soap/"><Url>http://server/sites/examplesite</U
rl><Title>ExampleSite</Title><Description>ExampleSite description
</Description><Lcid>1033</Lcid><WebTemplate>STS#0</WebTemplate><OwnerLogin>domain\username</O
wnerLogin><OwnerName>owner
name</OwnerName><OwnerEmail>someone@microsoft.com</OwnerEmail><PortalUrl /><PortalName
/></CreateSite></soap:Body></soap:Envelope>
```

The protocol server creates the site collection and responds as follows:

```
<?xml version="1.0" encoding="utf-8"?><soap:Envelope
xmlns:soap="http://schemas.xmlsoap.org/soap/envelope/"
xmlns:xsi="http://www.w3.org/2001/XMLSchema-instance"
xmlns:xsd="http://www.w3.org/2001/XMLSchema"><soap:Body><CreateSiteResponse
xmlns="http://schemas.microsoft.com/sharepoint/soap/"><CreateSiteResult>http://server/sites/e
xamplesite</CreateSiteResult></CreateSiteResponse></soap:Body></soap:Envelope>
```

4.2 DeleteSite

The following example demonstrates the protocol client requests and protocol server responses from the Administration Web Service Protocol to delete the site collection.

The protocol client sends a **DeleteSite** request to delete the site collection.

```
<?xml version="1.0" encoding="utf-8"?><soap:Envelope
xmlns:soap="http://schemas.xmlsoap.org/soap/envelope/"
xmlns:xsi="http://www.w3.org/2001/XMLSchema-instance"
xmlns:xsd="http://www.w3.org/2001/XMLSchema"><soap:Body><DeleteSite
xmlns="http://schemas.microsoft.com/sharepoint/soap/"><Url>http://server/sites/examplesite</U
rl></DeleteSite></soap:Body></soap:Envelope>
```

The protocol server deletes the site collection and responds as follows:

```
<?xml version="1.0" encoding="utf-8"?><soap:Envelope
xmlns:soap="http://schemas.xmlsoap.org/soap/envelope/"
xmlns:xsi="http://www.w3.org/2001/XMLSchema-instance"
xmlns:xsd="http://www.w3.org/2001/XMLSchema"><soap:Body><DeleteSiteResponse
xmlns="http://schemas.microsoft.com/sharepoint/soap/" /></soap:Body></soap:Envelope>
```

4.3 GetLanguages

The following example demonstrates the protocol client requests and protocol server responses from the Administration Web Service Protocol to get information about languages used in the deployment of the protocol server.

The protocol client sends a **GetLanguages** request.

```
<?xml version="1.0" encoding="utf-8"?><soap:Envelope
xmlns:soap="http://schemas.xmlsoap.org/soap/envelope/"
xmlns:xsi="http://www.w3.org/2001/XMLSchema-instance"
xmlns:xsd="http://www.w3.org/2001/XMLSchema"><soap:Body><GetLanguages
xmlns="http://schemas.microsoft.com/sharepoint/soap/" /></soap:Body></soap:Envelope>
```

The protocol server responds as follows:

```
<?xml version="1.0" encoding="utf-8"?><soap:Envelope
xmlns:soap="http://schemas.xmlsoap.org/soap/envelope/"
xmlns:xsi="http://www.w3.org/2001/XMLSchema-instance"
xmlns:xsd="http://www.w3.org/2001/XMLSchema"><soap:Body><GetLanguagesResponse
xmlns="http://schemas.microsoft.com/sharepoint/soap/"><GetLanguagesResult><Languages
xmlns="http://schemas.microsoft.com/sharepoint/soap/"><LCID>1033</LCID></Languages></GetLanguagesResult></GetLanguagesResponse></soap:Body></soap:Envelope>
```

5 Security

5.1 Security Considerations for Implementers

This protocol introduces no additional security considerations beyond those applicable to its underlying protocols.

5.2 Index of Security Parameters

None.

6 Appendix A: Full WSDL

For ease of implementation, the following full **WSDL** is provided:

```
<?xml version="1.0" encoding="utf-8"?>
<wsdl:definitions xmlns:s="http://www.w3.org/2001/XMLSchema"
xmlns:soap12="http://schemas.xmlsoap.org/wsdl/soap12/"
xmlns:mime="http://schemas.xmlsoap.org/wsdl/mime/"
xmlns:tns="http://schemas.microsoft.com/sharepoint/soap/"
xmlns:s1="http://microsoft.com/wsdl/types/"
xmlns:soap="http://schemas.xmlsoap.org/wsdl/soap/"
xmlns:tm="http://microsoft.com/wsdl/mime/textMatching/"
xmlns:http="http://schemas.xmlsoap.org/wsdl/http/"
xmlns:soapenc="http://schemas.xmlsoap.org/soap/encoding/"
targetNamespace="http://schemas.microsoft.com/sharepoint/soap/"
xmlns:wsdl="http://schemas.xmlsoap.org/wsdl/">
  <wsdl:types>
    <s:schema elementFormDefault="qualified"
targetNamespace="http://schemas.microsoft.com/sharepoint/soap/">
      <s:import namespace="http://microsoft.com/wsdl/types/" />
      <s:element name="CreateSite">
        <s:complexType>
          <s:sequence>
            <s:element name="Url" type="s:string" />
            <s:element minOccurs="0" maxOccurs="1" name="Title" type="s:string" />
            <s:element minOccurs="0" maxOccurs="1" name="Description" type="s:string" />
            <s:element name="Lcid" type="s:int" />
            <s:element minOccurs="0" maxOccurs="1" name="WebTemplate" type="s:string" />
            <s:element name="OwnerLogin" type="s:string" />
            <s:element minOccurs="0" maxOccurs="1" name="OwnerName" type="s:string" />
            <s:element minOccurs="0" maxOccurs="1" name="OwnerEmail" type="s:string" />
            <s:element minOccurs="0" maxOccurs="1" name="PortalUrl" type="s:string" />
            <s:element minOccurs="0" maxOccurs="1" name="PortalName" type="s:string" />
          </s:sequence>
        </s:complexType>
      </s:element>
      <s:element name="CreateSiteResponse">
        <s:complexType>
          <s:sequence>
            <s:element minOccurs="0" maxOccurs="1" name="CreateSiteResult" type="s:string" />
          </s:sequence>
        </s:complexType>
      </s:element>
      <s:element name="DeleteSite">
        <s:complexType>
          <s:sequence>
            <s:element name="Url" type="s:string" />
          </s:sequence>
        </s:complexType>
      </s:element>
      <s:element name="DeleteSiteResponse">
        <s:complexType />
      </s:element>
      <s:element name="GetLanguages">
        <s:complexType />
      </s:element>
      <s:element name="GetLanguagesResponse">
        <s:complexType>
          <s:sequence>
```

```

        <s:element minOccurs="1" maxOccurs="1" name="GetLanguagesResult">
            <s:complexType>
                <s:sequence>
                    <s:element name="Languages">
                        <s:complexType>
                            <s:sequence>
                                <s:element maxOccurs="unbounded" name="LCID" type="s:int" />
                            </s:sequence>
                        </s:complexType>
                    </s:element>
                </s:sequence>
            </s:complexType>
        </s:element>
        <s:element name="RefreshConfigCache">
            <s:complexType>
                <s:sequence>
                    <s:element name="VirtualServerId" type="s1:guid" />
                    <s:element name="AdminGroupChanged" type="s:boolean" />
                </s:sequence>
            </s:complexType>
        </s:element>
        <s:element name="RefreshConfigCacheResponse">
            <s:complexType />
        </s:element>
    </s:schema>
    <s:schema elementFormDefault="qualified"
        targetNamespace="http://microsoft.com/wsdl/types/">
        <s:simpleType name="guid">
            <s:restriction base="s:string">
                <s:pattern value="[0-9a-fA-F]{8}-[0-9a-fA-F]{4}-[0-9a-fA-F]{4}-[0-9a-fA-F]{4}-[0-9a-fA-F]{12}" />
            </s:restriction>
        </s:simpleType>
    </s:schema>
    <s:schema targetNamespace="http://schemas.microsoft.com/sharepoint/soap">
        <s:complexType name="SOAPFaultDetails">
            <s:sequence>
                <s:element name="errorstring" type="s:string"/>
                <s:element name="errorcode" type="s:string" minOccurs="0"/>
            </s:sequence>
        </s:complexType>
    </s:schema>
</wsdl:types>
<wsdl:message name="CreateSiteSoapIn">
    <wsdl:part name="parameters" element="tns:CreateSite" />
</wsdl:message>
<wsdl:message name="CreateSiteSoapOut">
    <wsdl:part name="parameters" element="tns:CreateSiteResponse" />
</wsdl:message>
<wsdl:message name="DeleteSiteSoapIn">
    <wsdl:part name="parameters" element="tns:DeleteSite" />
</wsdl:message>
<wsdl:message name="DeleteSiteSoapOut">
    <wsdl:part name="parameters" element="tns:DeleteSiteResponse" />
</wsdl:message>
<wsdl:message name="GetLanguagesSoapIn">

```

```

        <wsdl:part name="parameters" element="tns:GetLanguages" />
    </wsdl:message>
    <wsdl:message name="GetLanguagesSoapOut">
        <wsdl:part name="parameters" element="tns:GetLanguagesResponse" />
    </wsdl:message>
    <wsdl:message name="RefreshConfigCacheSoapIn">
        <wsdl:part name="parameters" element="tns:RefreshConfigCache" />
    </wsdl:message>
    <wsdl:message name="RefreshConfigCacheSoapOut">
        <wsdl:part name="parameters" element="tns:RefreshConfigCacheResponse" />
    </wsdl:message>
    <wsdl:portType name="AdminSoap">
        <wsdl:operation name="CreateSite">
            <wsdl:input message="tns:CreateSiteSoapIn" />
            <wsdl:output message="tns:CreateSiteSoapOut" />
        </wsdl:operation>
        <wsdl:operation name="DeleteSite">
            <wsdl:input message="tns>DeleteSiteSoapIn" />
            <wsdl:output message="tns>DeleteSiteSoapOut" />
        </wsdl:operation>
        <wsdl:operation name="GetLanguages">
            <wsdl:input message="tns:GetLanguagesSoapIn" />
            <wsdl:output message="tns:GetLanguagesSoapOut" />
        </wsdl:operation>
        <wsdl:operation name="RefreshConfigCache">
            <wsdl:input message="tns:RefreshConfigCacheSoapIn" />
            <wsdl:output message="tns:RefreshConfigCacheSoapOut" />
        </wsdl:operation>
    </wsdl:portType>
    <wsdl:binding name="AdminSoap" type="tns:AdminSoap">
        <soap:binding transport="http://schemas.xmlsoap.org/soap/http" />
        <wsdl:operation name="CreateSite">
            <soap:operation soapAction="http://schemas.microsoft.com/sharepoint/soap/CreateSite"
style="document" />
            <wsdl:input>
                <soap:body use="literal" />
            </wsdl:input>
            <wsdl:output>
                <soap:body use="literal" />
            </wsdl:output>
        </wsdl:operation>
        <wsdl:operation name="DeleteSite">
            <soap:operation soapAction="http://schemas.microsoft.com/sharepoint/soap/DeleteSite"
style="document" />
            <wsdl:input>
                <soap:body use="literal" />
            </wsdl:input>
            <wsdl:output>
                <soap:body use="literal" />
            </wsdl:output>
        </wsdl:operation>
        <wsdl:operation name="GetLanguages">
            <soap:operation soapAction="http://schemas.microsoft.com/sharepoint/soap/GetLanguages"
style="document" />
            <wsdl:input>
                <soap:body use="literal" />
            </wsdl:input>
            <wsdl:output>
                <soap:body use="literal" />
            </wsdl:output>
        </wsdl:operation>
    </wsdl:binding>

```



```

        </wsdl:output>
    </wsdl:operation>
    <wsdl:operation name="RefreshConfigCache">
        <soap:operation
soapAction="http://schemas.microsoft.com/sharepoint/soap/RefreshConfigCache" style="document"
/>
        <wsdl:input>
            <soap:body use="literal" />
        </wsdl:input>
        <wsdl:output>
            <soap:body use="literal" />
        </wsdl:output>
    </wsdl:operation>
</wsdl:binding>
<wsdl:binding name="AdminSoap12" type="tns:AdminSoap">
    <soap12:binding transport="http://schemas.xmlsoap.org/soap/http" />
    <wsdl:operation name="CreateSite">
        <soap12:operation soapAction="http://schemas.microsoft.com/sharepoint/soap/CreateSite"
style="document" />
        <wsdl:input>
            <soap12:body use="literal" />
        </wsdl:input>
        <wsdl:output>
            <soap12:body use="literal" />
        </wsdl:output>
    </wsdl:operation>
    <wsdl:operation name="DeleteSite">
        <soap12:operation soapAction="http://schemas.microsoft.com/sharepoint/soap/DeleteSite"
style="document" />
        <wsdl:input>
            <soap12:body use="literal" />
        </wsdl:input>
        <wsdl:output>
            <soap12:body use="literal" />
        </wsdl:output>
    </wsdl:operation>
    <wsdl:operation name="GetLanguages">
        <soap12:operation
soapAction="http://schemas.microsoft.com/sharepoint/soap/GetLanguages" style="document" />
        <wsdl:input>
            <soap12:body use="literal" />
        </wsdl:input>
        <wsdl:output>
            <soap12:body use="literal" />
        </wsdl:output>
    </wsdl:operation>
    <wsdl:operation name="RefreshConfigCache">
        <soap12:operation
soapAction="http://schemas.microsoft.com/sharepoint/soap/RefreshConfigCache" style="document"
/>
        <wsdl:input>
            <soap12:body use="literal" />
        </wsdl:input>
        <wsdl:output>
            <soap12:body use="literal" />
        </wsdl:output>
    </wsdl:operation>
</wsdl:binding>
</wsdl:definitions>

```

7 Appendix B: Product Behavior

The information in this specification is applicable to the following Microsoft products or supplemental software. References to product versions include released service packs:

- Microsoft® SharePoint® Foundation 2010
- Windows® SharePoint® Services 2.0
- Windows® SharePoint® Services 3.0

Exceptions, if any, are noted below. If a service pack or Quick Fix Engineering (QFE) number appears with the product version, behavior changed in that service pack or QFE. The new behavior also applies to subsequent service packs of the product unless otherwise specified. If a product edition appears with the product version, behavior is different in that product edition.

Unless otherwise specified, any statement of optional behavior in this specification that is prescribed using the terms SHOULD or SHOULD NOT implies product behavior in accordance with the SHOULD or SHOULD NOT prescription. Unless otherwise specified, the term MAY implies that the product does not follow the prescription.

[<1> Section 3.1.4.1.2.1:](#) The max length for **OwnerLogin** is 20 characters on Windows Server 2008.

[<2> Section 3.1.4.4:](#) Windows SharePoint Services 2.0 uses this operation to refresh in-memory copies of data from the **configuration database**.

8 Change Tracking

No table of changes is available. The document is either new or has had no changes since its last release.

9 Index

A

Abstract data model
 [server](#) 10
[Applicability](#) 7
[Attributes](#) 9

C

[Capability negotiation](#) 7
[Change tracking](#) 27
Client
 [overview](#) 10
Complex types
 [SOAPFaultDetails](#) 9
[CreateSite example](#) 19

D

Data model - abstract
 [server](#) 10
[DeleteSite example](#) 19
[Directory service schema elements](#) 9

E

[Elements - directory service schema](#) 9
Events
 [local - server](#) 18
 [timer - server](#) 17
Examples
 [CreateSite](#) 19
 [DeleteSite](#) 19
 [GetLanguages](#) 20

F

[Fields - vendor-extensible](#) 7
[Full WSDL](#) 22

G

[GetLanguages example](#) 20
[Glossary](#) 5
[Groups](#) 9

I

[Implementer - security considerations](#) 21
[Index of security parameters](#) 21
[Informative references](#) 6
Initialization
 [server](#) 11
[Interfaces -Windows SharePoint Services](#) 10
[Introduction](#) 5

L

Local events

[server](#) 18

M

Message processing
 [server](#) 11
Messages
 [attributes](#) 9
 [elements](#) 8
 [enumerated](#) 8
 [groups](#) 9
 [namespaces](#) 8
 [simple types](#) 9
 [SOAPFaultDetails complex type](#) 9
 [syntax](#) 8
 [transport](#) 8

N

[Namespaces](#) 8
[Normative references](#) 5

O

Operations
 [CreateSite](#) 11
 [DeleteSite](#) 13
 [GetLanguages](#) 14
 [RefreshConfigCache](#) 16
[Overview \(synopsis\)](#) 6

P

[Parameters - security index](#) 21
[Preconditions](#) 7
[Prerequisites](#) 7
[Product behavior](#) 26

R

References
 [informative](#) 6
 [normative](#) 5
[Relationship to other protocols](#) 6

S

[Schema elements - directory service](#) 9
Security
 [implementer considerations](#) 21
 [parameter index](#) 21
Sequencing rules
 [server](#) 11
Server
 [abstract data model](#) 10
 [CreateSite operation](#) 11
 [DeleteSite operation](#) 13
 [GetLanguages operation](#) 14
 [initialization](#) 11

- [local events](#) 18
- [message processing](#) 11
- [overview](#) 10
- [RefreshConfigCache operation](#) 16
- [sequencing rules](#) 11
- [timer events](#) 17
- [timers](#) 10
- [Windows SharePoint Services interface](#) 10
- [Simple types](#) 9
- [SOAPFaultDetails complex type](#) 9
- [Standards assignments](#) 7
- Syntax
 - [messages - overview](#) 8

T

- Timer events
 - [server](#) 17
- Timers
 - [server](#) 10
- [Tracking changes](#) 27
- [Transport](#) 8
- Types
 - [simple](#) 9

V

- [Vendor-extensible fields](#) 7
- [Versioning](#) 7

W

- [Windows SharePoint Services interface](#) 10
- [WSDL](#) 22