

# [MS-RAI]: Remote Assistance Initiation Protocol Specification

---

## Intellectual Property Rights Notice for Open Specifications Documentation

- **Technical Documentation.** Microsoft publishes Open Specifications documentation for protocols, file formats, languages, standards as well as overviews of the interaction among each of these technologies.
- **Copyrights.** This documentation is covered by Microsoft copyrights. Regardless of any other terms that are contained in the terms of use for the Microsoft website that hosts this documentation, you may make copies of it in order to develop implementations of the technologies described in the Open Specifications and may distribute portions of it in your implementations using these technologies or your documentation as necessary to properly document the implementation. You may also distribute in your implementation, with or without modification, any schema, IDL's, or code samples that are included in the documentation. This permission also applies to any documents that are referenced in the Open Specifications.
- **No Trade Secrets.** Microsoft does not claim any trade secret rights in this documentation.
- **Patents.** Microsoft has patents that may cover your implementations of the technologies described in the Open Specifications. Neither this notice nor Microsoft's delivery of the documentation grants any licenses under those or any other Microsoft patents. However, a given Open Specification may be covered by Microsoft [Open Specification Promise](#) or the [Community Promise](#). If you would prefer a written license, or if the technologies described in the Open Specifications are not covered by the Open Specifications Promise or Community Promise, as applicable, patent licenses are available by contacting [iplg@microsoft.com](mailto:iplg@microsoft.com).
- **Trademarks.** The names of companies and products contained in this documentation may be covered by trademarks or similar intellectual property rights. This notice does not grant any licenses under those rights.
- **Fictitious Names.** The example companies, organizations, products, domain names, e-mail addresses, logos, people, places, and events depicted in this documentation are fictitious. No association with any real company, organization, product, domain name, email address, logo, person, place, or event is intended or should be inferred.

**Reservation of Rights.** All other rights are reserved, and this notice does not grant any rights other than specifically described above, whether by implication, estoppel, or otherwise.

**Tools.** The Open Specifications do not require the use of Microsoft programming tools or programming environments in order for you to develop an implementation. If you have access to Microsoft programming tools and environments you are free to take advantage of them. Certain Open Specifications are intended for use in conjunction with publicly available standard specifications and network programming art, and assumes that the reader either is familiar with the aforementioned material or has immediate access to it.

## Revision Summary

Date	Revision History	Revision Class	Comments
02/22/2007	0.01		MCPD Milestone 3 Initial Availability
06/01/2007	1.0	Major	Updated and revised the technical content.
07/03/2007	1.0.1	Editorial	Revised and edited the technical content.
07/20/2007	1.1	Minor	Updated the technical content.
08/10/2007	1.2	Minor	Updated the technical content.
09/28/2007	1.3	Minor	Updated the technical content.
10/23/2007	1.3.1	Editorial	Revised and edited the technical content.
11/30/2007	1.4	Minor	Updated the technical content.
01/25/2008	1.4.1	Editorial	Revised and edited the technical content.
03/14/2008	1.4.2	Editorial	Revised and edited the technical content.
05/16/2008	1.4.3	Editorial	Revised and edited the technical content.
06/20/2008	1.5	Minor	Updated the technical content.
07/25/2008	1.5.1	Editorial	Revised and edited the technical content.
08/29/2008	1.5.2	Editorial	Revised and edited the technical content.
10/24/2008	1.5.3	Editorial	Revised and edited the technical content.
12/05/2008	1.6	Minor	Updated the technical content.
01/16/2009	1.6.1	Editorial	Revised and edited the technical content.
02/27/2009	1.6.2	Editorial	Revised and edited the technical content.
04/10/2009	1.6.3	Editorial	Revised and edited the technical content.
05/22/2009	1.7	Minor	Updated the technical content.
07/02/2009	2.0	Major	Updated and revised the technical content.
08/14/2009	2.1	Minor	Updated the technical content.
09/25/2009	2.2	Minor	Updated the technical content.
11/06/2009	2.3	Minor	Updated the technical content.
12/18/2009	2.4	Minor	Updated the technical content.
01/29/2010	2.5	Minor	Updated the technical content.

<b>Date</b>	<b>Revision History</b>	<b>Revision Class</b>	<b>Comments</b>
03/12/2010	2.5.1	Editorial	Revised and edited the technical content.
04/23/2010	2.5.2	Editorial	Revised and edited the technical content.
06/04/2010	2.5.3	Editorial	Revised and edited the technical content.
07/16/2010	2.5.3	No change	No changes to the meaning, language, or formatting of the technical content.
08/27/2010	2.5.3	No change	No changes to the meaning, language, or formatting of the technical content.
10/08/2010	2.5.3	No change	No changes to the meaning, language, or formatting of the technical content.
11/19/2010	2.5.3	No change	No changes to the meaning, language, or formatting of the technical content.
01/07/2011	2.5.3	No change	No changes to the meaning, language, or formatting of the technical content.
02/11/2011	2.5.3	No change	No changes to the meaning, language, or formatting of the technical content.
03/25/2011	2.5.3	No change	No changes to the meaning, language, or formatting of the technical content.
05/06/2011	2.5.3	No change	No changes to the meaning, language, or formatting of the technical content.
06/17/2011	2.6	Minor	Clarified the meaning of the technical content.

# Contents

<b>1</b>	<b>Introduction .....</b>	<b>6</b>
1.1	Glossary .....	6
1.2	References.....	7
1.2.1	Normative References.....	7
1.2.2	Informative References .....	7
1.3	Overview .....	7
1.4	Relationship to Other Protocols.....	8
1.5	Prerequisites/Preconditions .....	9
1.6	Applicability Statement.....	9
1.7	Versioning and Capability Negotiation.....	10
1.8	Vendor-Extensible Fields.....	10
1.9	Standards Assignments .....	10
<b>2</b>	<b>Messages.....</b>	<b>12</b>
2.1	Transport.....	12
2.2	Common Data Types .....	12
2.2.1	Remote Assistance Connection String 1.....	12
2.2.2	Remote Assistance Connection String 2.....	13
2.2.3	SessionStateEnum.....	14
<b>3</b>	<b>Protocol Details.....</b>	<b>16</b>
3.1	IPCHService Remote Assistance Server Details .....	16
3.1.1	Abstract Data Model .....	16
3.1.2	Timers .....	16
3.1.3	Initialization .....	16
3.1.4	Message Processing Events and Sequencing Rules.....	16
3.1.4.1	IPCHService.....	16
3.1.4.1.1	RemoteConnectionParms (Opnum 19) .....	17
3.1.4.1.2	RemoteUserSessionInfo (Opnum 20) .....	19
3.1.4.1.2.1	IPCHCollection .....	19
3.1.4.1.2.1.1	_NewEnum (Opnum 7) .....	20
3.1.4.1.2.1.2	Item (Opnum 8) .....	20
3.1.4.1.2.1.3	Count (Opnum 9).....	21
3.1.4.1.2.2	ISAFSession.....	21
3.1.4.1.2.2.1	DomainName (Get) (Opnum 11) .....	22
3.1.4.1.2.2.2	DomainName (Set) (Opnum 12) .....	23
3.1.4.1.2.2.3	SessionID (Get) (Opnum 7).....	23
3.1.4.1.2.2.4	SessionID (Set) (Opnum 8).....	24
3.1.4.1.2.2.5	SessionState (Get) (Opnum 9).....	24
3.1.4.1.2.2.6	SessionState (Set) (Opnum 10).....	25
3.1.4.1.2.2.7	UserName (Get) (Opnum 13) .....	25
3.1.4.1.2.2.8	UserName (Set) (Opnum 14).....	26
3.1.5	Timer Events .....	26
3.1.6	Other Local Events .....	26
3.2	IPCHService Remote Assistance Client Details .....	26
3.2.1	Abstract Data Model .....	26
3.2.2	Timers .....	27
3.2.3	Initialization .....	27
3.2.4	Message Processing Events and Sequencing Rules.....	27
3.2.5	Timer Events .....	27

3.2.6	Other Local Events .....	27
3.3	IRASrv Remote Assistance Server Details .....	28
3.3.1	Abstract Data Model .....	28
3.3.2	Timers .....	28
3.3.3	Initialization .....	28
3.3.4	Message Processing Events and Sequencing Rules .....	28
3.3.4.1	IRASrv .....	28
3.3.4.1.1	GetNoviceUserInfo (Opnum 7) .....	29
3.3.4.1.2	GetSessionInfo (Opnum 8) .....	29
3.3.5	Timer Events .....	30
3.3.6	Other Local Events .....	30
3.4	IRASrv Remote Assistance Client Details.....	30
3.4.1	Abstract Data Model .....	30
3.4.2	Timers .....	31
3.4.3	Initialization .....	31
3.4.4	Message Processing Events and Sequencing Rules .....	31
3.4.5	Timer Events .....	31
3.4.6	Other Local Events .....	31
<b>4</b>	<b>Protocol Examples .....</b>	<b>32</b>
<b>5</b>	<b>Security .....</b>	<b>33</b>
5.1	Security Considerations for Implementers .....	33
5.2	Index of Security Parameters .....	33
<b>6</b>	<b>Appendix A: Remote Assistance Invitation File Format .....</b>	<b>34</b>
<b>7</b>	<b>Appendix B: Full IDL.....</b>	<b>36</b>
<b>8</b>	<b>Appendix C: Product Behavior .....</b>	<b>39</b>
<b>9</b>	<b>Change Tracking.....</b>	<b>43</b>
<b>10</b>	<b>Index .....</b>	<b>45</b>

# 1 Introduction

The Remote Assistance Initiation Protocol is a set of **Distributed Component Object Model (DCOM)** interfaces, as specified in [\[MS-DCOM\]](#), for initiating a **Remote Assistance connection** to another computer in a **domain**. The Remote Assistance Initiation Protocol allows an authorized **expert** to start **Remote Assistance (RA)** on a remote **novice** computer to retrieve data that is required to make a Remote Assistance connection from the expert computer to the novice computer.

## 1.1 Glossary

The following terms are defined in [\[MS-GLOS\]](#):

**binary large object (BLOB)**  
**class identifier (CLSID)**  
**computer name**  
**Distributed Component Object Model (DCOM)**  
**domain**  
**domain name (3)**  
**fully qualified domain name (FQDN)**  
**opnum**  
**remote procedure call (RPC)**  
**Terminal Services**  
**Unicode**  
**Unicode string**  
**universally unique identifier (UUID)**  
**well-known endpoint**

The following terms are specific to this document:

**expert:** The side of a **Remote Assistance connection** that is able to view the remote screen of the other computer in order to provide help.

**novice:** The side of a **Remote Assistance connection** that shares its screen with the other computer in order to receive help.

**RDP:** See **Remote Desktop Protocol**.

**Remote Assistance:** A feature of the operating system that allows screen, keyboard, and mouse sharing so that a computer user can be assisted by a remote helper.

**Remote Assistance connection:** A communication framework that is established between two computers that facilitates **Remote Assistance**.

**Remote Desktop Protocol:** A protocol that enables the exchange of client and server settings and the negotiation of common settings to use for the duration of the connection, so that input, graphics, and other data can be exchanged and processed between client and server.

**virtual channel:** A static transport used for lossless communication between two computers over a main data connection, in 1600-byte chunks, that is created once a **Remote Assistance connection** has been established. A **virtual channel** allows data and control messages to be exchanged between the two computers. The **virtual channel** that is used by the **Remote Assistance** Protocol is described in the [Remote Desktop Protocol: Basic Connectivity and Graphics Remoting Specification](#) ([MS-RDPBCGR]) document.

**MAY, SHOULD, MUST, SHOULD NOT, MUST NOT:** These terms (in all caps) are used as specified in [\[RFC2119\]](#). All statements of optional behavior use either MAY, SHOULD, or SHOULD NOT.

## 1.2 References

References to Microsoft Open Specification documents do not include a publishing year because links are to the latest version of the documents, which are updated frequently. References to other documents include a publishing year when one is available.

### 1.2.1 Normative References

We conduct frequent surveys of the normative references to assure their continued availability. If you have any issue with finding a normative reference, please contact [dochelp@microsoft.com](mailto:dochelp@microsoft.com). We will assist you in finding the relevant information. Please check the archive site, <http://msdn2.microsoft.com/en-us/library/E4BD6494-06AD-4aed-9823-445E921C9624>, as an additional source.

[C706] The Open Group, "DCE 1.1: Remote Procedure Call", C706, August 1997, <http://www.opengroup.org/public/pubs/catalog/c706.htm>

[MS-DCOM] Microsoft Corporation, "[Distributed Component Object Model \(DCOM\) Remote Protocol Specification](#)".

[MS-DTYP] Microsoft Corporation, "[Windows Data Types](#)".

[MS-ERREF] Microsoft Corporation, "[Windows Error Codes](#)".

[MS-OAUT] Microsoft Corporation, "[OLE Automation Protocol Specification](#)".

[MS-RA] Microsoft Corporation, "[Remote Assistance Protocol Specification](#)".

[MS-RDPBCGR] Microsoft Corporation, "[Remote Desktop Protocol: Basic Connectivity and Graphics Remoting Specification](#)".

[MS-RPCE] Microsoft Corporation, "[Remote Procedure Call Protocol Extensions](#)".

[RFC2119] Bradner, S., "Key words for use in RFCs to Indicate Requirement Levels", BCP 14, RFC 2119, March 1997, <http://www.rfc-editor.org/rfc/rfc2119.txt>

### 1.2.2 Informative References

[MS-GLOS] Microsoft Corporation, "[Windows Protocols Master Glossary](#)".

[MSDN-CRYPTO] Microsoft Corporation, "Cryptography Reference", <http://msdn.microsoft.com/en-us/library/aa380256.aspx>

## 1.3 Overview

The Remote Assistance Initiation Protocol provides a set of DCOM interfaces that enable an expert to retrieve the Remote Assistance connection-specific data from the remote novice computer. This Remote Assistance connection-specific data is subsequently used to initiate a Remote Assistance connection as explained in the Remote Assistance Initiation Protocol.

The expert must have the IP address or **FQDN** of the novice computer in order to use this protocol.

The expert is the DCOM client and the novice is the DCOM server.

Before the expert's DCOM call is executed on the novice computer, DCOM performs a check to verify that the expert is on the list of authorized Remote Assistance helpers on the novice computer. [<1>](#)

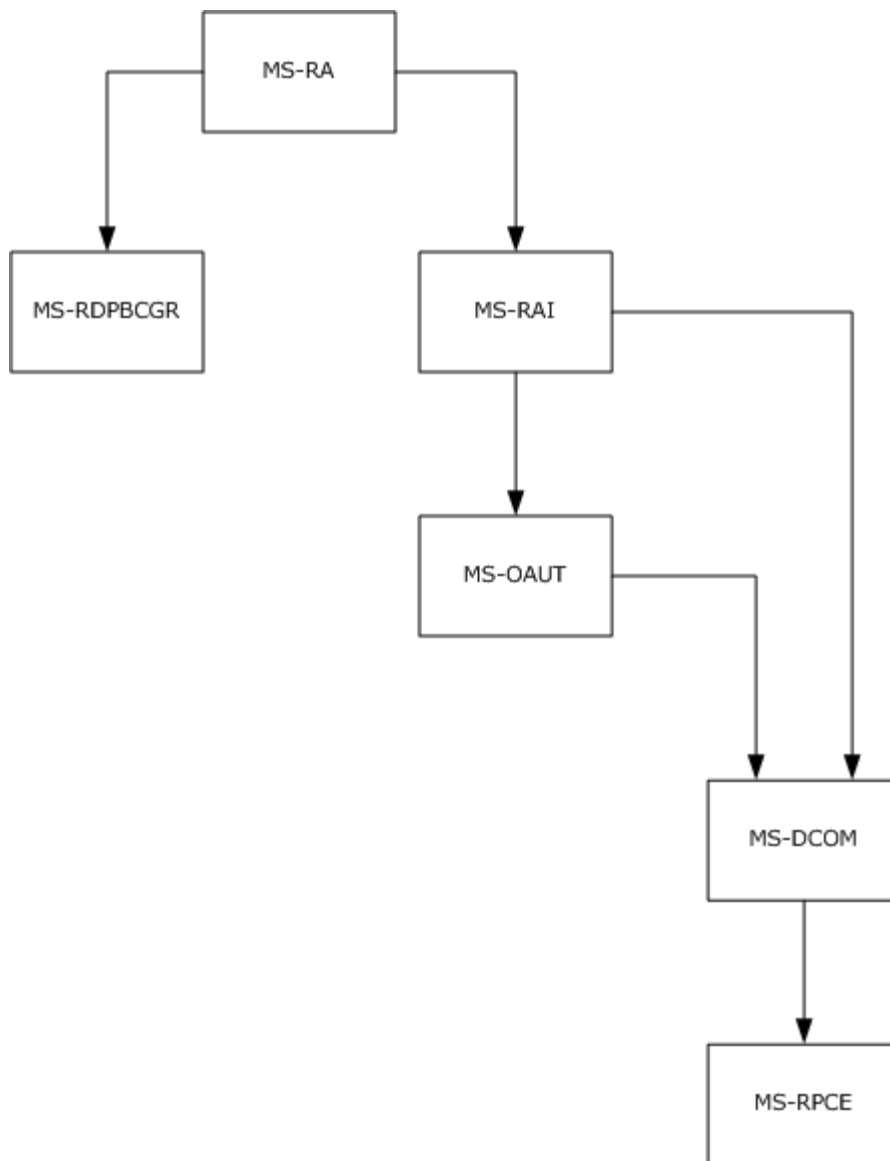
## 1.4 Relationship to Other Protocols

The Remote Assistance Initiation Protocol relies on the OLE Automation Protocol [\[MS-OAUT\]](#), the Distributed Component Object Model (DCOM) Remote Protocol [\[MS-DCOM\]](#), and on the Microsoft **remote procedure call (RPC)**, as specified in the Remote Procedure Call Protocol Extensions [\[MS-RPCE\]](#).

The Remote Assistance Protocol [\[MS-RA\]](#) is dependent on both the Remote Assistance Initiation Protocol and the Remote Desktop Protocol: Basic Connectivity and Graphics Remoting [\[MS-RDPBCGR\]](#).

The following diagram illustrates the relationships between the preceding protocols.





**Figure 1: Relationships between protocols**

### 1.5 Prerequisites/Preconditions

This protocol is implemented over DCOM and RPC, and, as a result, has the prerequisites specified in the Distributed Component Object Model (DCOM) Remote Protocol [\[MS-DCOM\]](#) and Remote Procedure Call Protocol Extensions [\[MS-RPCE\]](#) as being common to DCOM and RPC interfaces.

The Remote Assistance Initiation Protocol assumes that the expert has the IP Address or the fully-qualified domain name (FQDN) of the novice computer.

### 1.6 Applicability Statement

This protocol is used to perform the following functions:

- Using the novice IP address or FQDN, the expert queries the novice for a list of active **terminal services** sessions running on the novice computer. Additional information about each terminal services session—DomainName, UserName, terminal services SessionID, and terminal services SessionState—is also obtained.
- Using the DomainName, UserName, and SessionID of a specific session on the novice computer, the expert queries the novice for a Remote Assistance Connection String. The novice starts Remote Assistance and returns a Remote Assistance Connection String. The novice is now waiting for the expert to make a peer-to-peer connection to its terminal services session.
- After a Remote Assistance Connection String is obtained by the expert, it is used to make a peer-to-peer Remote Assistance connection to the novice's Terminal Service session on the novice computer.

## 1.7 Versioning and Capability Negotiation

This document covers versioning issues in the following areas.

**Supported Transports:** This protocol uses the DCOM [\[MS-DCOM\]](#) technology, which provides capabilities to query for interface versions.

**Protocol Versions:** This protocol is composed of the following two primary DCOM interfaces, which are version 0.0: [<2>](#)

- IPCHService
- IRASrv

Both these interfaces offer similar functionality through their methods. An RPC client determines if a method is supported by attempting to invoke the method; if the method is not supported, the RPC server returns the "RPC\_S\_PROCNUM\_OUT\_OF\_RANGE" error, as specified in [\[MS-RPCE\]](#) section 3.1.1.5.5.

When an expert attempts to connect using this protocol, it uses only one of these two interfaces.

The novice computer implements at least one of these two interfaces, and can implement both interfaces.

The expert computer negotiates for a given set of server functionality by specifying the **UUID** corresponding to the wanted RPC interface when binding to the novice.

## 1.8 Vendor-Extensible Fields

This protocol does not define any vendor-extensible fields.

## 1.9 Standards Assignments

No standards assignments have been received for this protocol. All values used in these extensions are in private ranges specified in section [2.1](#).

Parameter	Value	Reference
RPC Interface UUID for IPCHService	833E4200-AFF7-4AC3-AAC2-9F24C1457BCE	<a href="#">IPCHService</a>
RPC Interface UUID for IPCHCollection	833E4100-AFF7-4AC3-AAC2-9F24C1457BCE	<a href="#">IPCHCollection</a>

Parameter	Value	Reference
RPC Interface UUID for ISAFSession	833E41AA-AFF7-4AC3-AAC2-9F24C1457BCE	<a href="#">ISAFSession</a>
RPC Interface UUID for IRASrv	F120A684-B926-447F-9DF4-C966CB785648	<a href="#">IRASrv</a>
<b>CLSID</b> for PCHService object	833E4010-AFF7-4AC3-AAC2-9F24C1457BCE	<a href="#">PCHService</a>
CLSID for RASrv object	3C3A70A7-A468-49B9-8ADA-28E11FCCAD5D	<a href="#">RASrv</a>

## 2 Messages

### 2.1 Transport

DCOM [\[MS-DCOM\]](#) is used as the transport protocol. The Remote Assistance Initiation Protocol documented here relies upon DCOM [MS-DCOM] authentication and encryption for all protocol messages.

This protocol MUST use these universally unique identifier (UUID) interfaces, as explained in section [1.9](#):

- (833E4200-AFF7-4AC3-AAC2-9F24C1457BCE)
- (833E4100-AFF7-4AC3-AAC2-9F24C1457BCE)
- (833E41AA-AFF7-4AC3-AAC2-9F24C1457BCE)
- (F120A684-B926-447F-9DF4-C966CB785648)

The following two are the CLSIDs of the objects implementing these interfaces, as explained in section [1.9](#):

- (833E4010-AFF7-4AC3-AAC2-9F24C1457BCE)
- (3C3A70A7-A468-49B9-8ADA-28E11FCCAD5D)

### 2.2 Common Data Types

In addition to RPC base types and definitions specified in [\[C706\]](#) and [\[MS-DTYP\]](#), additional data types are defined in the following sections.

There are two version-specific forms of the Remote Assistance Connection String, appended with 1 and 2 to differentiate them.

#### 2.2.1 Remote Assistance Connection String 1

The Remote Assistance Connection String 1 contains the **Remote Desktop Protocol** parameters to establish a Remote Assistance connection. The Remote Assistance Connection String 1 is a comma-delimited **Unicode string** comprising the following pieces of data. [<3>](#)

```
<ProtocolVersion>,<protocolType>,<machineAddressList>,<assistantAccountPwd>,  
<RASessionID>,<RASessionName>,<RASessionPwd>,<protocolSpecificParms>
```

The elements are defined as follows.

**ProtocolVersion:** Identifies the protocol version. The value MUST be 65,538.

**protocolType:** Identifies the protocol type. The value MUST be 1.

**machineAddressList:** Identifies network address of server machine. It is a semicolon-delimited list of IPAddress(or **computer name**):PortID string pairs. The IPAddress is of type IPV4.

**assistantAccountPwd:** Password for Remote Assistance Account Name. This MUST be set to "\*".

**RASessionID:** Remote Assistance session unique identifier.

**RASessionName:** Remote Assistance session name. This MUST be set to "\*".

**RASessionPwd:** Remote Assistance session password. This MUST be set to "\*".

**protocolSpecificParms:** Parameter specific to a Remote Desktop Protocol.

The following is an example of Remote Assistance Connection String 1.

```
65538,1,172.31.243.138:3389;MIKE_HOME:3389,*,Uj7Rp0lU80SibpRw
RZ9+z1vbh7nIgVn89XlAiKp15Vc=,*,*,RcfwecK8dpcT1fjZ6iQ5M0+q7iU=
```

The values for the Remote Assistance Connection String 1 entities in the preceding example are as follows.

```
ProtocolVersion = 65538
protocolType = 1
machineAddressList = 172.31.243.138:3389;MIKE_HOME:3389
assistantAccountPwd = *
RASessionID = Uj7Rp0lU80SibpRwRZ9+z1vbh7nIgVn89XlAiKp15Vc=
RASessionName = *
RASessionPwd = *
protocolSpecificParms = RcfwecK8dpcT1fjZ6iQ5M0+q7iU=
```

## 2.2.2 Remote Assistance Connection String 2

The second type of the Remote Assistance Connection String packet is a Unicode string in XML format.[<4>](#) The details of this are as follows.

```
<E>
  <A KH="Protocol-specific Parameter" ID="Authorization String Identifier" />
  <C>
    <T ID="Transport ID" SID="Session ID">
      <L P="Port" N="Server Name" />
    </T>
  </C>
</E>
```

The Remote Assistance Connection String 2 starts with the root Node <E>. This root Node contains the following child nodes:

1. The Auth String Node <A> has the following attributes.

Value	Meaning
KH	Parameters specific to a Remote Desktop Protocol
ID	Authstring identifier

2. The Connector Node <C> has child nodes that give information on the underlying Transport used. This Transport Node <T> has the following attributes.

Value	Meaning
ID	Transport Identifier
SID	Session Identifier

3. The Transport Node has Listener child Nodes that give information about the Server IP and port. This Listener node <L> has the following attributes.

Value	Meaning
P	Port: The dynamic port on which the Remote Assistance connection could happen.
N	Server Name: The name/IP address of the server, that is, the novice computer.

The following is an example of Remote Assistance Connection String 2:

```
<E>
  <A KH="YiKwWUY8Ioq5NB3wAQHSbs5kwrM=" ID="8rYm30RBW8/4dAWoUsWbFCF5jno/7jr5t
NpHQc2goLbw4uuBBJvLsU02YYLlBMg5"/>
  <C>
    <T ID="1" SID="1440550163">
      <L P="49749" N="2001:4898:1a:5:79e2:3356:9b22:3470"/>
      <L P="49751" N="172.31.250.64"/>
    </T>
  </C>
</E>
```

In the preceding example:

1. The Auth String Node <A> has the attribute KH="YiKwWUY8Ioq5NB3wAQHSbs5kwrM=" and attribute ID = "8rYm30RBW8/4dAWoUsWbFCF5jno/7jr5tNpHQc2goLbw4uuBBJvLsU02YYLIBMg5".
2. The Connector Node <C> has one Transport child Node <T> with the following attributes:

ID = "1"

Session ID - SID = "1440550163"

3. The Transport Node has two Listener child Nodes <L> with the following server and port information attributes:

Port - P = "49749"

Server Name - N = "2001:4898:1a:5:79e2:3356:9b22:3470", and

Port - P = "49751"

Server Name - N = "172.31.250.64".

### 2.2.3 SessionStateEnum

The **SessionStateEnum** enumeration defines the states of a terminal services session.

```
typedef enum
```

```

{
    pchActive = 0,
    pchConnected = 1,
    pchConnectQuery = 2,
    pchShadow = 3,
    pchDisconnected = 4,
    pchIdle = 5,
    pchListen = 6,
    pchReset = 7,
    pchDown = 8,
    pchInit = 9,
    pchStateInvalid = 10
} SessionStateEnum;

```

**pchActive:** The user is logged on and active.

**pchConnected:** The server is connected to the client.

**pchConnectQuery:** The server is in the process of connecting to the client.

**pchShadow:** The session is shadowing another session.

**pchDisconnected:** The client has disconnected from the session.

**pchIdle:** The session is waiting for a client to connect.

**pchListen:** The session is listening for a request for a new connection. No user is logged on to a listener session. A listener session cannot be reset, shadowed, or changed to a regular client session.

**pchReset:** The session is being reset.

**pchDown:** The session is down due to an error.

**pchInit:** The session is initializing.

**pchStateInvalid:** The session is in an unknown state.

## 3 Protocol Details

### 3.1 IPCHService Remote Assistance Server Details

The Remote Assistance server provides methods that allow a client to:

- Get the collection of the terminal services sessions on the remote novice computer.
- Get a Remote Assistance Connection String for a specific Terminal Server session.

The following sections specify server details of the IPCHService interface of the Remote Assistance Initiation Protocol, including abstract data models, timers, and message processing rules.

#### 3.1.1 Abstract Data Model

No abstract data model is used.

#### 3.1.2 Timers

No timers or time-out periods are associated with this section of the protocol.

#### 3.1.3 Initialization

The server MUST listen on the **well-known endpoint** defined for this RPC interface. For more information, see section [2.1](#).

#### 3.1.4 Message Processing Events and Sequencing Rules

##### 3.1.4.1 IPCHService

The **IPCHService** interface is implemented by the novice to allow the expert to request a Remote Assistance Connection String. [<5>](#)

The UUID for this interface is: "833E4200-AFF7-4AC3-AAC2-9F24C1457BCE".

**Opnums** 3 and 4 are not used across the network. These opnums are reserved and MUST NOT be reused by non-Microsoft implementations. [<6>](#)

Methods in RPC Opnum Order

Method	Description
Opnum7NotUsedByProtocol	Opnum: 7
Opnum8NotUsedByProtocol	Opnum: 8
Opnum9NotUsedByProtocol	Opnum: 9
Opnum10NotUsedByProtocol	Opnum: 10
Opnum11NotUsedByProtocol	Opnum: 11
	Opnum: 12



Method	Description
Opnum12NotUsedByProtocol	
Opnum13NotUsedByProtocol	Opnum: 13
Opnum14NotUsedByProtocol	Opnum: 14
Opnum15NotUsedByProtocol	Opnum: 15
Opnum16NotUsedByProtocol	Opnum: 16
Opnum17NotUsedByProtocol	Opnum: 17
Opnum18NotUsedByProtocol	Opnum: 18
<a href="#">RemoteConnectionParms</a>	Gets the Remote Assistance connection parameters for a specified UserName, DomainName, and SessionID triple. Opnum: 19
<a href="#">RemoteUserSessionInfo</a>	Returns the collection of the terminal services sessions on the remote novice computer. All the terminal services session information is returned as a standard IPCHCollection interface. The members of this collection are objects of type ISAFSession. ISAFSession includes the DomainName, UserName, SessionID, and User SessionState for each session. Opnum: 20
Opnum21NotUsedByProtocol	Opnum: 21

Opnums 0, 1, and 2 are reserved for the **IUnknown\_QueryInterface**, **AddRef**, and **Release** methods used by the standard COM IUnknown interface, as specified in [\[MS-DCOM\]](#) section 3.1.1.5.8. Opnums 5 and 6 are reserved for the **GetIDsOfNames** and **Invoke** methods in the IDispatch interface, as specified in [\[MS-OAUT\]](#) section 3.1. Opnums 7 through 18 and opnum 21 are not used by this protocol.

#### 3.1.4.1.1 RemoteConnectionParms (Opnum 19)

The **RemoteConnectionParms** method gets the Remote Assistance connection parameters for a specific UserName, DomainName, and SessionID triple.

```
[id(DISPID_PCH_SVC__REMOTECONNECTIONPARMS)] HRESULT RemoteConnectionParms(
    [in] BSTR bstrUserName,
    [in] BSTR bstrDomainName,
    [in] long lSessionID,
    [in] BSTR bstrUserHelpBlob,
    [out, retval] BSTR* pbstrConnectionString
);
```

**bstrUserName:** The UserName part of the DomainName\UserName string corresponding to the terminal services session for which the client is requesting a Remote Assistance Connection String.

**bstrDomainName:** The DomainName part of the DomainName\UserName string corresponding to the terminal services session for which the client is requesting a Remote Assistance Connection String.

**lSessionID:** Identifier of the terminal services session for which the client is requesting a Remote Assistance Connection String.

**bstrUserHelpBlob:** A semicolon-delimited string that contains the domain and user names of the expert requesting a Remote Assistance Connection String. The format of the string is as follows.

```
<Length of the string>;  
<"UNSOLICITED=1"> (Note: no semicolon)  
<Length of the DomainName\UserName string>;  
<ID=DomainName\UserName> (Note: characters 'ID=' count toward string length)
```

The following is an example.

```
"13;UNSOLICITED=118;ID=EXDOMAIN\EXUSER"
```

**pbstrConnectionString:** Pointer to a Remote Assistance Connection String for the requested session.

**Return Values:** A signed 32-bit value indicating return status. This method MUST return zero to indicate success, or an [HRESULT](#) error value (as specified in [\[MS-ERREF\]](#) section 2.1.1) to indicate failure. If the UserName and DomainName are valid [BSTRs](#), the return code is one listed in the following table. If the UserName and DomainName are invalid [BSTRs](#), the **HRESULT** value returned is the corresponding **HRESULT** to the system error code ERROR\_NONE\_MAPPED.

Return value/code	Description
0x00000000 S_OK	The call was successful.
0x80070005 E_ACCESSDENIED	General access denied error. <a href="#">&lt;7&gt;</a>
0x8007000E E_OUTOFMEMORY	Out of memory.
0x800704EC ERROR_ACCESS_DISABLED_BY_POLICY	Windows cannot open this program because it has been prevented from doing so by a software restriction policy. For more information, open Event Viewer or contact the system administrator.

Exceptions Thrown:

No exceptions are thrown beyond those thrown by the underlying RPC protocol [\[MS-RPCE\]](#).

### 3.1.4.1.2 RemoteUserSessionInfo (Opnum 20)

The **RemoteUserSessionInfo** method returns the collection of the terminal services sessions on the remote novice machine. All the terminal services session information is returned as a standard **IPCHCollection** interface. The members of this collection are objects of type **ISAFSession**. **ISAFSession** includes the **DomainName**, **SessionID**, **SessionState**, and **UserName** for each session.

```
[id(DISPID_PCH_SVC_REMOTEUSERSESSIONINFO)] HRESULT RemoteUserSessionInfo(  
    [out, retval] IPCHCollection** pVal  
);
```

**pVal:** Pointer to an [IPCHCollection](#) interface containing terminal services sessions information on the server.

**Return Values:** A signed 32-bit value indicating return status. This method MUST return zero to indicate success, or an [HRESULT](#) error value (as specified in [\[MS-ERREF\]](#) section 2.1.1) to indicate failure.

Return value/code	Description
0x00000000 S_OK	The call was successful.
0x80070005 E_ACCESSDENIED	General access denied error. <a href="#">&lt;8&gt;</a>
0x8007000E E_OUTOFMEMORY	Out of memory.
0x800704EC ERROR_ACCESS_DISABLED_BY_POLICY	Windows cannot open this program because it has been prevented from doing do by a software restriction policy. For more information, open Event Viewer or contact the system administrator.

Exceptions Thrown:

No exceptions are thrown beyond those thrown by the underlying RPC protocol [\[MS-RPCE\]](#).

#### 3.1.4.1.2.1 IPCHCollection

The **IPCHCollection** interface provides methods to enumerate the elements of a collection.

The UUID for this interface is: "833E4100-AFF7-4AC3-AAC2-9F24C1457BCE".

Opnums 3 and 4 are not used across the network. These opnums are reserved and MUST NOT be reused by non-Microsoft implementations. [<9>](#)

Methods in RPC Opnum Order

Method	Description
<a href="#">NewEnum</a>	Creates a copy of the collection. Opnum: 7
<a href="#">Item</a>	Retrieves an element.

Method	Description
	Opnum: 8
<a href="#">Count</a>	Retrieves the number of elements in the collection. Opnum: 9

Opnums 0, 1, and 2 are reserved for the **IUnknown\_QueryInterface**, **AddRef**, and **Release** methods used by the standard COM IUnknown interface, as specified in [\[MS-DCOM\]](#) section 3.1.1.5.8. Opnums 5 and 6 are reserved for the **GetIDsOfNames** and **Invoke** methods in the IDispatch interface, as specified in [\[MS-OAUT\]](#) section 3.1.

#### 3.1.4.1.2.1.1 \_NewEnum (Opnum 7)

The **\_NewEnum** method creates a copy of the collection.

```
[propget, id(DISPID_NEWENUM)] HRESULT _NewEnum(
    [out, retval] IUnknown** pVal
);
```

**pVal:** Pointer to a pointer to the **IUnknown** interface of a new copy of the collection.

**Return Values:** A signed 32-bit value indicating return status. This method MUST return zero to indicate success, or an [HRESULT](#) error value (as specified in [\[MS-ERREF\]](#) section 2.1.1) to indicate failure.

Return value/code	Description
0x00000000 S_OK	The call was successful.
0x80004003 E_POINTER	The method failed due to an invalid pointer.
0x8007000E E_OUTOFMEMORY	The method was unable to allocate required memory.

Exceptions Thrown:

No exceptions are thrown beyond those thrown by the underlying RPC protocol [\[MS-RPCE\]](#).

#### 3.1.4.1.2.1.2 Item (Opnum 8)

The **Item** method retrieves an element.

```
[propget, id(DISPID_VALUE)] HRESULT Item(
    [in] long vIndex,
    [out, retval] VARIANT* ppEntry
);
```

**vIndex:** One-indexed number of the element to retrieve.

**ppEntry:** Pointer to the element at *vIndex*, of type [VARIANT](#) as defined in [\[MS-OAUT\]](#) section 2.2.29.2.

**Return Values:** A signed 32-bit value indicating return status. This method MUST return zero to indicate success, or an [HRESULT](#) error value (as specified in [\[MS-ERREF\]](#) section 2.1.1) to indicate failure.

Return value/code	Description
0x00000000 S_OK	The call was successful.
0x80004003 E_POINTER	The method failed due to an invalid pointer.
0x8007000E E_OUTOFMEMORY	The method was unable to allocate required memory.

Exceptions Thrown:

No exceptions are thrown beyond those thrown by the underlying RPC protocol [\[MS-RPCE\]](#).

### 3.1.4.1.2.1.3 Count (Opnum 9)

The **Count** method retrieves the number of elements in the collection.

```
[propget, id(DISPID_PCH_COL__COUNT)] HRESULT Count(  
    [out, retval] long* pVal  
);
```

**pVal:** Pointer to the number of elements in the collection.

**Return Values:** A signed 32-bit value indicating return status. This method MUST return zero to indicate success, or an [HRESULT](#) error value (as specified in [\[MS-ERREF\]](#) section 2.1.1) to indicate failure.

Return value/code	Description
0x00000000 S_OK	The call was successful.
0x80004003 E_POINTER	The method failed due to an invalid pointer.
0x8007000E E_OUTOFMEMORY	The method was unable to allocate required memory.

Exceptions Thrown:

No exceptions are thrown beyond those thrown by the underlying RPC protocol [\[MS-RPCE\]](#).

### 3.1.4.1.2.2 ISAFSession

The **ISAFSession** interface is implemented by servers to describe sessions.

The UUID for this interface is:

"833E41AA-AFF7-4AC3-AAC2-9F24C1457BCE".

Opnums 3 and 4 are not used across the network. These opnums are reserved and MUST NOT be reused by non-Microsoft implementations. <10>

Methods in RPC Opnum Order

Method	Description
<a href="#">SessionID (Get)</a>	Retrieves the identifier number of the session. Opnum: 7
<a href="#">SessionID (Set)</a>	Sets the identifier number of the session. Opnum: 8
<a href="#">SessionState (Get)</a>	Retrieves the state of the session. Opnum: 9
<a href="#">SessionState (Set)</a>	Sets the state of the session. Opnum: 10
<a href="#">DomainName (Get)</a>	Retrieves the <b>domain name</b> for the session user. Opnum: 11
<a href="#">DomainName (Set)</a>	Sets the domain name for the session user. Opnum: 12
<a href="#">UserName (Get)</a>	Retrieves the user name for the session. Opnum: 13
<a href="#">UserName (Set)</a>	Sets the user name for the session. Opnum: 14

Opnums 0, 1, and 2 are reserved for the **IUnknown\_QueryInterface**, **AddRef**, and **Release** methods used by the standard COM IUnknown interface, as specified in [\[MS-DCOM\]](#) section 3.1.1.5.8. Opnums 5 and 6 are reserved for the **GetIDsOfNames** and **Invoke** methods in the IDispatch interface, as specified in [\[MS-OAUT\]](#) section 3.1.

### 3.1.4.1.2.2.1 DomainName (Get) (Opnum 11)

The **DomainName (Get)** method retrieves the domain name for the session user.

```
[propget, id(DISPID_SAF_SESS__DOMAINNAME)] HRESULT DomainName(
    [out, retval] BSTR* pVal
);
```

**pVal:** Pointer to the domain name for the session user.

**Return Values:** A signed 32-bit value indicating return status. This method MUST return zero to indicate success, or an [HRESULT](#) error value (as specified in [\[MS-ERREF\]](#) section 2.1.1) to indicate failure.

Return value/code	Description
0x00000000	The call was successful.

Return value/code	Description
S_OK	
0x80004003 E_POINTER	The method failed due to an invalid pointer.

Exceptions Thrown:

No exceptions are thrown beyond those thrown by the underlying RPC protocol [\[MS-RPCE\]](#).

#### 3.1.4.1.2.2.2 DomainName (Set) (Opnum 12)

The **DomainName (Set)** method sets the domain name for the session user.

```
[propput, id(DISPID_SAF_SESS__DOMAINNAME)] HRESULT DomainName(
    [in] BSTR pVal
);
```

**pVal:** Domain name to assign for the session user.

**Return Values:** A signed 32-bit value indicating return status. This method MUST return zero to indicate success, or an [HRESULT](#) error value (as specified in [\[MS-ERREF\]](#) section 2.1.1) to indicate failure.

Return value/code	Description
0x00000000 S_OK	The call was successful.

Exceptions Thrown:

No exceptions are thrown beyond those thrown by the underlying RPC protocol [\[MS-RPCE\]](#).

#### 3.1.4.1.2.2.3 SessionID (Get) (Opnum 7)

The **SessionID (Get)** method retrieves the identifier number of the session.

```
[propget, id(DISPID_SAF_SESS__SESSIONID)] HRESULT SessionID(
    [out, retval] DWORD* pVal
);
```

**pVal:** Pointer to the identifier number of the session.

**Return Values:** A signed 32-bit value indicating return status. This method MUST return zero to indicate success, or an [HRESULT](#) error value (as specified in [\[MS-ERREF\]](#) section 2.1.1) to indicate failure.

Return value/code	Description
0x00000000 S_OK	The call was successful.

Return value/code	Description
0x80000003 E_INVALIDARG	One or more arguments are invalid.

Exceptions Thrown:

No exceptions are thrown beyond those thrown by the underlying RPC protocol [\[MS-RPCE\]](#).

#### 3.1.4.1.2.2.4 SessionID (Set) (Opnum 8)

The **SessionID (Set)** method sets the identifier number of the session.

```
[propput, id(DISPID_SAF_SESS__SESSIONID)] HRESULT SessionID(
    [in] DWORD pVal
);
```

**pVal:** Identifier number of the session to assign.

**Return Values:** A signed 32-bit value indicating return status. This method MUST return zero to indicate success, or an [HRESULT](#) error value (as specified in [\[MS-ERREF\]](#) section 2.1.1) to indicate failure.

Return value/code	Description
0x00000000 S_OK	The call was successful.

Exceptions Thrown:

No exceptions are thrown beyond those thrown by the underlying RPC protocol [\[MS-RPCE\]](#).

#### 3.1.4.1.2.2.5 SessionState (Get) (Opnum 9)

The **SessionState (Get)** method retrieves the state of the session.

```
[propget, id(DISPID_SAF_SESS__SESSIONSTATE)] HRESULT SessionState(
    [out, retval] SessionStateEnum* pVal
);
```

**pVal:** Pointer to an integer that represents the state of the session. The integer MUST be one of the values of [SessionStateEnum](#), as specified in section [2.2.3](#).

**Return Values:** A signed 32-bit value indicating return status. This method MUST return zero to indicate success, or an [HRESULT](#) error value (as specified in [\[MS-ERREF\]](#) section 2.1.1) to indicate failure.

Return value/code	Description
0x00000000 S_OK	The call was successful.
0x80000003	One or more arguments are invalid.



Return value/code	Description
E_INVALIDARG	

Exceptions Thrown:

No exceptions are thrown beyond those thrown by the underlying RPC protocol [\[MS-RPCE\]](#).

### 3.1.4.1.2.2.6 SessionState (Set) (Opnum 10)

The **SessionState (Set)** method sets the state of the session.

```
[propput, id(DISPID_SAF_SESS__SESSIONSTATE)] HRESULT SessionState(
    [in] SessionStateEnum pVal
);
```

**pVal:** An integer that represents the state of the session. The integer **MUST** be one of the values of the [SessionStateEnum](#) enumeration, as specified in section [2.2.3](#).

**Return Values:** A signed 32-bit value indicating return status. This method **MUST** return zero to indicate success, or an [HRESULT](#) error value (as specified in [\[MS-ERREF\]](#) section 2.1.1) to indicate failure.

Return value/code	Description
0x00000000 S_OK	The call was successful.
0x80000003 E_INVALIDARG	One or more arguments are invalid.

Exceptions Thrown:

No exceptions are thrown beyond those thrown by the underlying RPC protocol [\[MS-RPCE\]](#).

### 3.1.4.1.2.2.7 UserName (Get) (Opnum 13)

The **UserName (Get)** method retrieves the user name for the session.

```
[propget, id(DISPID_SAF_SESS__USERNAME)] HRESULT UserName(
    [out, retval] BSTR* pVal
);
```

**pVal:** Pointer to the user name for the session.

**Return Values:** A signed 32-bit value indicating return status. This method **MUST** return zero to indicate success, or an [HRESULT](#) error value (as specified in [\[MS-ERREF\]](#) section 2.1.1) to indicate failure.

Return value/code	Description
0x00000000 S_OK	The call was successful.

Return value/code	Description
0x80004003 E_POINTER	The method failed due to an invalid pointer.

Exceptions Thrown:

No exceptions are thrown beyond those thrown by the underlying RPC protocol [\[MS-RPCE\]](#).

#### 3.1.4.1.2.2.8 UserName (Set) (Opnum 14)

The **UserName (Set)** method sets the user name for the session.

```
[propput, id(DISPID_SAF_SESS__USERNAME)] HRESULT UserName(
    [in] BSTR pVal
);
```

**pVal:** User name to assign for the session.

**Return Values:** A signed 32-bit value indicating return status. This method MUST return zero to indicate success, or an [HRESULT](#) error value (as specified in [\[MS-ERREF\]](#) section 2.1.1) to indicate failure.

Return value/code	Description
0x00000000 S_OK	The call was successful.

Exceptions Thrown:

No exceptions are thrown beyond those thrown by the underlying RPC protocol [\[MS-RPCE\]](#).

#### 3.1.5 Timer Events

No timer events are required beyond the events maintained in the underlying RPC transport (see section [2.1](#)).

#### 3.1.6 Other Local Events

No additional local events are used beyond the events maintained in the underlying RPC transport (see section [2.1](#)).

### 3.2 IPCHService Remote Assistance Client Details

The following sections specify client details of the Remote Assistance Initiation Protocol, including abstract data models, timers, and message processing rules.

#### 3.2.1 Abstract Data Model

The expert MUST specify the IP address or FQDN of the novice computer to use this protocol.

Using the specified IP address or FQDN of the novice computer, the expert connects to the novice computer and invokes the [RemoteUserSessionInfo](#) method of IPCHService on the remote novice

computer and gets back a collection containing the DomainName, UserName, SessionID and SessionState of the terminal services sessions from the novice computer.

The expert selects the terminal services session where Remote Assistance is to be offered and by specifying the terminal services Session's DomainName, UserName and SessionID, invokes the [RemoteConnectionParms](#) method of IPCHService on the remote novice computer to obtain the Remote Assistance Connection String.

### 3.2.2 Timers

No protocol timers are required other than those internal ones used in RPC to implement resiliency to network outages, as specified in [\[MS-RPCE\]](#).

### 3.2.3 Initialization

The client creates an RPC association (or binding) to the server RPC before an RPC method is called. The client MAY create a separate association for each method invocation, or it MAY reuse an association for multiple invocations.

### 3.2.4 Message Processing Events and Sequencing Rules

The following list shows the sequence of steps involved in a Remote Assistance Connection String request:

1. The client initiates the conversation with the server by performing DCOM activation, as specified in [\[MS-DCOM\]](#) section 3.2.4.1.1, of the **PCHService** CLSID specified in section [1.9](#). As a result of the activation, the client gets the **PCHService**'s interface from the server.
2. The client then obtains an additional **IPCHService** interface from the **PCHService** interface as specified in [\[MS-DCOM\]](#) section 3.2.4.4.3.
3. The client then invokes the [RemoteUserSessionInfo](#) method of the **IPCHService** interface to retrieve an **ISAFSession** interface pointers' collection of type **IPCHCollection**.
4. Enumerate the **ISAFSession** interfaces of the server by repeatedly calling the Item method of the **IPCHCollection** interface. The collected list of session information is presented to the Remote Assistance user, by means of an implementation-specific user interface, to decide which session to connect to.
5. From the collected **ISAFSession** interface values, a session is chosen by the Remote Assistance user. The SessionID and corresponding DomainName and UserName are passed in a call to the [RemoteConnectionParms](#) method of the **IPCHService** interface. This call returns the Remote Assistance Connection String for the specified session. Sessions with no DomainName or UserName MUST be ignored.
6. This Remote Assistance Connection String is valid to begin the Remote Assistance connection.

### 3.2.5 Timer Events

No protocol timer events are required on the client other than the events maintained in the underlying RPC transport.

### 3.2.6 Other Local Events

No additional local events are used on the client other than the events maintained in the underlying RPC transport.

### 3.3 IRASrv Remote Assistance Server Details

The Remote Assistance Server provides methods to allow a client to:

- Get the collection of the terminal services sessions on the remote novice computer.
- Get a Remote Assistance Connection String for a specified user session on the remote novice computer.

The following sections specify server details of the Remote Assistance Initiation Protocol, including abstract data models, timers, and initialization.

#### 3.3.1 Abstract Data Model

No abstract data model is used.

#### 3.3.2 Timers

No protocol timers are required other than those internal ones used in RPC to implement resiliency to network outages, as specified in [\[MS-RPCE\]](#).

#### 3.3.3 Initialization

The server MUST listen on the well-known endpoint defined for this RPC interface. For more information, see section [2.1](#).

#### 3.3.4 Message Processing Events and Sequencing Rules

##### 3.3.4.1 IRASrv

The **IRASrv** interface is implemented by the novice computer to allow the expert computer to request a Remote Assistance Connection String. [<11>](#)

The UUID for this interface is: "F120A684-B926-447F-9DF4-C966CB785648".

Opnums 3 and 4 are not used across the network. These opnums are reserved and MUST NOT be reused by non-Microsoft implementations. [<12>](#)

Methods in RPC Opnum Order

Method	Description
<a href="#">GetNoviceUserInfo</a>	Retrieves the Remote Assistance Connection String information for a specified terminal services session. Opnum: 7
<a href="#">GetSessionInfo</a>	Returns the collection of the terminal services sessions on the remote novice computer. This method also returns the number of terminal services sessions running on the novice computer. All the terminal services session information is returned as a SAFEARRAY. The elements of this SAFEARRAY are strings with information about the DomainName, UserName, and SessionID for each terminal services session. Opnum: 8

Opnums 0, 1, and 2 are reserved for the **IUnknown\_QueryInterface**, **AddRef**, and **Release** methods used by the standard COM IUnknown interface, as specified in [\[MS-DCOM\]](#) section 3.1.1.5.8. Opnums 5 and 6 are reserved for the **GetIDsOfNames**, and **Invoke** methods in the IDispatch interface, as specified in [\[MS-OAUT\]](#) section 3.1.

### 3.3.4.1.1 GetNoviceUserInfo (Opnum 7)

The **GetNoviceUserInfo** method is received by the server in an RPC\_REQUEST packet. The method is received in the terminal services session as specified by the Client. In response, the server returns the [Remote Assistance Connection String 2](#) for the specified terminal services session.

```
[id(1), helpstring("method GetNoviceUserInfo")] HRESULT GetNoviceUserInfo(
    [in, out] LPWSTR* szName
);
```

**szName:** Pointer to a null-terminated Unicode string that contains the Remote Assistance Connection String 2 for the specified terminal services session.

**Return Values:** A signed 32-bit value indicating return status. This method MUST return zero to indicate success, or an [HRESULT](#) error value (as specified in [\[MS-ERREF\]](#) section 2.1.1) to indicate failure.

Return value/code	Description
0x00000000 S_OK	The call was successful.
0x80004003 E_POINTER	The method failed due to an invalid pointer for szName.
0x8007000E E_OUTOFMEMORY	Out of memory.
0x80070052 ERROR_CANNOT_MAKE	An instance of Remote Assistance is already running on the novice's machine.

Exceptions Thrown:

No exceptions are thrown beyond those thrown by the underlying RPC protocol [\[MS-RPCE\]](#).

### 3.3.4.1.2 GetSessionInfo (Opnum 8)

The **GetSessionInfo** method is received by the server in an RPC\_REQUEST packet. In response, the server returns the terminal services session information for the various sessions on the computer. The terminal services session information is returned as a SAFEARRAY of BSTRs. Each BSTR contains the DomainName, UserName and SessionID in the format DomainName\UserName:SessionID.

This method also returns the count of the total number of sessions.

This method does not return Idle and Disconnected terminal services sessions. Any null values returned in the SAFEARRAY should be ignored.

```
[id(2), helpstring("method GetSessionInfo")] HRESULT GetSessionInfo(
    [in, out] SAFEARRAY(BSTR) * UserNames,
```

```
[in, out] INT* Count  
);
```

**UserNames:** Pointer to a [SAFEARRAY](#), as specified in [\[MS-OAUT\]](#), of BSTRs containing the terminal services session information. Each BSTR element in the array contains the DomainName, UserName, and SessionID in the format DomainName\UserName:SessionID. This is returned to the expert.

**Count:** Pointer to an INT that returns the number of terminal services sessions on the novice.

**Return Values:** A signed 32-bit value indicating return status. This method MUST return zero to indicate success, or an [HRESULT](#) error value (as specified in [\[MS-ERREF\]](#) section 2.1.1) to indicate failure.

Return value/code	Description
0x00000000 S_OK	The call was successful.
0x80004003 E_POINTER	The method failed due to an invalid pointer.
0x8007000E E_OUTOFMEMORY	The method was unable to allocate required memory.

Exceptions Thrown:

No exceptions are thrown beyond those thrown by the underlying RPC protocol [\[MS-RPCE\]](#).

### 3.3.5 Timer Events

No protocol timer events are required on the client other than the events maintained in the underlying RPC transport.

### 3.3.6 Other Local Events

No additional local events are used other than the events maintained in the underlying RPC transport.

## 3.4 IRASrv Remote Assistance Client Details

The following sections specify client details of the Remote Assistance Initiation Protocol, including abstract data models, timers, and message processing rules.

### 3.4.1 Abstract Data Model

The expert computer MUST specify the IP address or FQDN of the novice computer to use this protocol.

Using the specified IP Address or FQDN of the novice computer, the expert computer connects to the novice computer and invokes the [GetSessionInfo](#) method of IRASrv on the remote novice computer. **GetSessionInfo** returns a [SAFEARRAY](#) of BSTRs containing the DomainName, UserName and SessionID of the terminal services sessions from the novice computer.

The expert computer selects the terminal services session where Remote Assistance is to be offered and invokes the [GetNoviceUserInfo](#) method of the IRASrv interface running on the remote novice computer. The GetNoviceUserInfo method returns the Remote Assistance Connection String for the terminal services session where it is being invoked.

### 3.4.2 Timers

No protocol timers are required other than those internal ones used in RPC to implement resiliency to network outages, as specified in [\[MS-RPCE\]](#).

### 3.4.3 Initialization

The client creates an RPC association (or binding) to the server RPC before an RPC method is called. The client MAY create a separate association for each method invocation, or it MAY reuse an association for multiple invocations.

### 3.4.4 Message Processing Events and Sequencing Rules

The following list shows the sequence of steps involved in a Remote Assistance Connection String request:

1. The client initiates the conversation with the server by performing DCOM activation, as specified in [\[MS-DCOM\]](#) section 3.2.4.1.1, of the **RASrv** CLSID specified in section [1.9](#). As a result of the activation, the client gets the **RASrv**'s interface from the server.
2. The client then obtains an additional **IRASrv** interface from the **RASrv** interface as specified in [\[MS-DCOM\]](#) section 3.2.4.4.3.
3. The client then invokes the [GetSessionInfo](#) method of the **IRASrv** interface to retrieve the terminal services session information as a SAFEARRAY of BSTRs and the count of the number of sessions.
4. From the collected terminal services session entries, choose a session and use the corresponding SessionID to invoke the [GetNoviceUserInfo](#) method of **IRASrv** in the specified session. This call returns the Remote Assistance Connection String for the specified session.
5. This Remote Assistance Connection String is valid to begin the Remote Assistance connection from the expert computer to the novice computer.

### 3.4.5 Timer Events

No protocol timer events are required on the client other than the events maintained in the underlying RPC transport.

### 3.4.6 Other Local Events

No additional local events are used on the client other than the events maintained in the underlying RPC transport.

## 4 Protocol Examples

The following example demonstrates the client and server for [IPCHService](#) interface, using the [RemoteUserSessionInfo](#) and [RemoteConnectionParms](#) methods.

1. The client (expert) calls the **RemoteUserSessionInfo** method on the server.
2. The server (novice) returns with code 0x00000000 and with the [IPCHCollection](#) interface pointer.
3. The client gets the count of the terminal services sessions in the collection by calling the [Count](#) method on the **IPCHCollection** interface.
4. The client indexes the collection from 1 through count using the [Item](#) method, and for each item in the collection retrieves the [ISAFSession](#) interface pointer.
5. From the **ISAFSession** interface the client gets:
  1. The DomainName using the [DomainName\(Get\)](#) method.
  2. The UserName using the [UserName\(Get\)](#) method.
  3. The SessionID using the [SessionID\(Get\)](#) method.
6. The Client selects a DomainName, UserName, and SessionID.
7. The client formats the UserBlob, for example:  
"13;UNSOLICITED=119;ID=TESTDOMAIN\\Admin".
8. The Client calls the **RemoteConnectionParms** method using the UserName, DomainName, SessionID, and UserBlob.
9. The server returns with code 0x00000000, and with the Remote Assistance Connection String.



## 5 Security

### 5.1 Security Considerations for Implementers

This protocol relies on the security features provided by DCOM [\[MS-DCOM\]](#). Implementers SHOULD review the security considerations listed in [\[MS-RPCE\]](#) section 5.1, as these are also valid for DCOM and DCOM-based protocols. [<13>](#)

### 5.2 Index of Security Parameters

There are no security parameters for this protocol.

## 6 Appendix A: Remote Assistance Invitation File Format

The purpose of the Remote Assistance Initiation Protocol is to obtain the Remote Assistance Connection String using DCOM. However, the implementer is free to use alternative approaches to obtain the connection string. One such alternative approach implemented in Windows is to transmit the Remote Assistance Invitation File over e-mail as an XML file. [<14>](#)

The expert computer parses the Remote Assistance Invitation File to extract the Remote Assistance Connection String and other information.

There are two version-specific types of the Remote Assistance Invitation File.

Following is a sample Remote Assistance Invitation File of the first type: [<15>](#)

```
<?xml version="1.0" encoding="Unicode" ?>
  <UPLOADINFO TYPE="Escalated">
    <UPLOADDATA
      USERNAME="jeff"
      RCTICKET="65538,1,192.168.1.65:3389;jeff_xp:3389,*,ot9B5Ut8n6FmiIOr2Aa91
      5WwuLcMdtNl5AoXFiA4wLg=,*,*,5nKH3X0Ikre0jjL9SaRlfN10p9o="
      RCTICKETENCRYPTED="1"
      DtStart="1160080069"
      DtLength="60"
      PassStub="o2*5GdBARK_JBB"
      L="0" />
    </UPLOADDATA>
  </UPLOADINFO>
```

The file contains the following pieces of information:

Value	Meaning
UPLOADINFO	The UPLOADINFO TYPE MUST be "Escalated".
UPLOADDATA	The UPLOADDATA contains the following information: <b>USERNAME:</b> The name of the Remote Assistance novice computer. <b>RCTICKET:</b> The Remote Assistance Connection String. <b>DtStart:</b> The time when the Remote Assistance Connection String was created. This time is the number of seconds elapsed since UTC 1/1/70. <b>DtLength:</b> The duration for which the Remote Assistance Connection String is valid. This is expressed in minutes. If the expert computer cannot connect to the novice computer successfully within this time, Remote Assistance closes on the novice computer. <b>PassStub:</b> The encrypted novice computer's password string. When the Remote Assistance Connection String is sent as a file over e-mail, to provide additional security, a password is used. <a href="#">&lt;16&gt;</a> <b>L:</b> Indicates whether the novice computer is connected via a modem. L = 1 means MODEM is used, 0 means high-speed connectivity is used.

Following is a sample Remote Assistance Invitation File of the second type: [<17>](#)

```
<?xml version="1.0" encoding="Unicode" ?>
  <UPLOADINFO TYPE="Escalated">
    <UPLOADDATA
      USERNAME="jeff"
```

```

LHTICKET="3CD9C8A0DB0628410E91EC277CAEB705E5422CE1DA55E0C118155A8BA465C3E81552DC
B85D03F6A7F2F930C44C1D097239DB8B47339A01D4392F4F05985106757148AEA4C6832BA2AC7C46
0B958BD4F47966DBBC76E72F6F47FEE1AC50844D654D2D86A760854286F9DAA3823F0346D41063C7
6378535688017C2D00D263AC187F6BE26FDB854B01E1BC8E4328F54163DB2E901D3805E0D6CF2593
7A2D43C959F51809124DA2E70807A737323968644CB8BC56ECD43AAA40B3B2BA7021198D98AA4D
5B9818095053C0104A52743343489AD1E12AC0CB7001E56910718B9A8155A60AFF3CC26D2B163629
46C32F7F9C22AE844D731740301FBF5951FCF765E052D793F526603AA6B7F86C0697BD02FEF32A8F
4031E30AD55F9752FCA3DB60F8A12466D256F29B22131C1D8ED43E9ACA2BBD172C27D1FD284F825E
E4E65F2D201E042C1C4DEE6C06522A3F015036F7603AAF16D8A6CB595E22CA80572C91F9E163028C
AA4A3E7EA0152045BDAAE8C1221283FF2E23CCC53D34870348D6D9CBD5B93411D4F9BB8180062D6B
573CF2D428FDB1CA7142885F6B2A966A149E19F5D00E22E18A3802612521C126455B675F4D7E12C3
6B861C19A2795CE87ED592CCCB735A081E428CC50BC23B460794B53601221FFCCCB458090DEB9B59
19C942A6FD6937F49F9951A9CD416E8E356A6293443EC11798DE204CC67B652C5B62491E37455098
764EE6727AB8272827411A712C62012026C71BC408D09F6B5FEEB85BF9DE434A5A2BB6F514C4BD06
4D643F0AEEAE46CCACA4994A6E7CEC42B70EC020DD2CB42058DC919EBE2CBCBE34575F4A40D47D1
EEA092653FC6723B2EC2E88231E46E98598218AA305810360CA972C935B5BCB73769197FD78B835C
3A63A7D603E6CB51F6E84B377D731FEF38C6A9FE68640B58506486C76C33B7F53176E7A52D753DD2
EAEE34FB2812663D94B5F6BEF6C878BCD7D41F1983A5B87F1F797D4D7504F9C83A9FE661EBBD57FB
3A01CF82D2E7FF01AE38F70EB8FA8A77B2A4DAB5BDA0E0B458A8FC51F3A354AB9F104DD7B91144D5
E8589F319CDB5ABD4A2B5DBB4B9C43E74309DE5C30102E7165507C5B2A5E613E30F784A0540E206C
38965F1869EE53BD0CC8056B324C242F4DFD5D70EB55082F5A9F5513164D1097536037AB6964DBF4
D3425CBC5F2564B8DBC13889782BFE2C3DB391992781A80B187F6DAE15D643C85BAB3E12B535FEB0
E0BF79FF58"
RCTICKET="65538,1,172.31.244.101:55646,*,BnrZvG4FglMwHBhZgo7SkJEqD90DrPYPnxtC/lv
UcczDCZJacjm0w80gKyzCHTTc,*,*,VasNb+Ymg1mvJ/AJWSh56qq7pk4="
  RCTICKETENCRYPTED="1"
  DtStart="1160080069"
  DtLength="60"
  PassStub= "fg^2IkiL*z3j4U"
  L="0" />
</UPLOADINFO>

```

The file contains the following pieces of information:

Value	Meaning
UPLOADINFO	The UPLOADINFO TYPE MUST be "Escalated".
UPLOADDATA	<p>The UPLOADDATA contains the following information:</p> <p><b>USERNAME:</b> The name of the Remote Assistance novice.</p> <p><b>LHTICKET:</b> The encrypted <a href="#">Remote Assistance Connection String 2</a> where each byte is converted to two HEX numbers&lt;18&gt;</p> <p><b>RCTICKET:</b> The version-specific&lt;19&gt; Remote Assistance Connection String.</p> <p><b>DtStart:</b> The time when the Remote Assistance Connection String was created. This time is the number of seconds elapsed since UTC 1/1/70.</p> <p><b>DtLength:</b> The duration for which the Remote Assistance Connection String is valid. This is expressed in minutes. If the expert computer cannot connect to the novice computer successfully within this time, Remote Assistance closes on the novice computer.</p> <p><b>PassStub:</b> The encrypted novice computer password string. When the Remote Assistance Connection String is sent as a file over e-mail, to provide additional security, a password is used.</p> <p><b>L:</b> Indicates whether the novice computer is connected via a modem. L = 1 means MODEM is used, 0 means high-speed connectivity is used.</p>

## 7 Appendix B: Full IDL

For ease of implementation, the full IDL is provided below.

This IDL imports the IDL from the OLE Automation Protocol [\[MS-OAUT\]](#), Appendix A, to provide support for the type definitions VARIANT and SAFEARRAY.

```
import "ms-olut.idl";
#define SAFEARRAY(type) SAFEARRAY
#define DISPID_PCH_BASE 0x08010000
#define DISPID_PCH_BASE_COL (DISPID_PCH_BASE + 0x0000)
#define DISPID_PCH_HELPSPVC_BASE 0x08000000
#define DISPID_PCH_HELPSPVC_BASE_SVC (DISPID_PCH_HELPSPVC_BASE + 0x0000)
#define DISPID_PCH_SVC_REMOTECONNECTIONPARMS (DISPID_PCH_HELPSPVC_BASE_SVC + 0x0040)
#define DISPID_PCH_SVC_REMOTEUSERSESSIONINFO (DISPID_PCH_HELPSPVC_BASE_SVC + 0x0041)
#define DISPID_PCH_COL_COUNT (DISPID_PCH_BASE_COL + 0x0000)

#define DISPID_SAF_BASE 0x08020000
#define DISPID_SAF_BASE_RCD (DISPID_SAF_BASE + 0x0B00)
#define DISPID_SAF_BASE_USER (DISPID_SAF_BASE + 0x0C00)
#define DISPID_SAF_BASE_SESS (DISPID_SAF_BASE + 0x0D00)
#define DISPID_SAF_USER_DOMAINNAME (DISPID_SAF_BASE_USER + 0x0010)
#define DISPID_SAF_USER_USERNAME (DISPID_SAF_BASE_USER + 0x0011)
#define DISPID_SAF_SESS_SESSIONID (DISPID_SAF_BASE_SESS + 0x0010)
#define DISPID_SAF_SESS_SESSIONSTATE (DISPID_SAF_BASE_SESS + 0x0011)
#define DISPID_SAF_SESS_DOMAINNAME (DISPID_SAF_BASE_SESS + 0x0012)
#define DISPID_SAF_SESS_USERNAME (DISPID_SAF_BASE_SESS + 0x0013)

typedef enum
{
    pchActive = 0,
    pchConnected = 1,
    pchConnectQuery = 2,
    pchShadow = 3,
    pchDisconnected = 4,
    pchIdle = 5,
    pchListen = 6,
    pchReset = 7,
    pchDown = 8,
    pchInit = 9,
    pchStateInvalid = 10
} SessionStateEnum;

[
    object,
    uuid(833E4100-AFF7-4AC3-AAC2-9F24C1457BCE),
    dual,
    oleautomation,
    helpstring("IPCHCollection Interface"),
    pointer_default(unique)
]

interface IPCHCollection : IDispatch
{
    [propget, id(DISPID_NEWENUM)] HRESULT _NewEnum(
```

```

        [out, retval] IUnknown* *pVal    );
    [propget, id(DISPID_VALUE)          ] HRESULT Item      (
        [in] long vIndex,
        [out, retval] VARIANT    *ppEntry );
    [propget, id(DISPID_PCH_COL_COUNT)] HRESULT Count      (
        [out, retval] long      *pVal    );
};

[
    object,
    uuid(833E4200-AFF7-4AC3-AAC2-9F24C1457BCE),
    dual,
    oleautomation,
    helpstring("IPCHService Interface"),
    pointer_default(unique)
]
interface IPCHService : IDispatch
{
    HRESULT Opnum7NotUsedByProtocol(void);
    HRESULT Opnum8NotUsedByProtocol(void);
    HRESULT Opnum9NotUsedByProtocol(void);
    HRESULT Opnum10NotUsedByProtocol(void);
    HRESULT Opnum11NotUsedByProtocol(void);
    HRESULT Opnum12NotUsedByProtocol(void);
    HRESULT Opnum13NotUsedByProtocol(void);
    HRESULT Opnum14NotUsedByProtocol(void);
    HRESULT Opnum15NotUsedByProtocol(void);
    HRESULT Opnum16NotUsedByProtocol(void);
    HRESULT Opnum17NotUsedByProtocol(void);
    HRESULT Opnum18NotUsedByProtocol(void);
    [id(DISPID_PCH_SVC__REMOTECONNECTIONPARMS)] HRESULT RemoteConnectionParms(
        [in] BSTR bstrUserName,
        [in] BSTR bstrDomainName,
        [in] long lSessionID,
        [in] BSTR bstrUserHelpBlob,
        [out, retval] BSTR *pbstrConnectionString );
    [id(DISPID_PCH_SVC__REMOTEUSERSESSIONINFO)] HRESULT RemoteUserSessionInfo(
        [out, retval] IPCHCollection* *pVal );
    HRESULT Opnum21NotUsedByProtocol(void);
};

[
    object,
    uuid(833E41AA-AFF7-4AC3-AAC2-9F24C1457BCE),
    dual,
    oleautomation,
    helpstring("ISAFSession Interface"),
    pointer_default(unique)
]
interface ISAFSession : IDispatch
{
    [propget, id(DISPID_SAF_SESS__SESSIONID )] HRESULT SessionID (
        [out, retval] DWORD                    *pVal    );
    [propput, id(DISPID_SAF_SESS__SESSIONID )] HRESULT SessionID (
        [in          ] DWORD                    pVal    );
    [propget, id(DISPID_SAF_SESS__SESSIONSTATE)] HRESULT SessionState(
        [out, retval] SessionStateEnum        *pVal    );
};

```

```

        [propput, id(DISPID_SAF_SESS__SESSIONSTATE)] HRESULT SessionState(
        [in          ] SessionStateEnum          pVal      );
        [propget, id(DISPID_SAF_SESS__DOMAINNAME )] HRESULT DomainName (
        [out, retval] BSTR                        *pVal      );
        [propput, id(DISPID_SAF_SESS__DOMAINNAME )] HRESULT DomainName (
        [in          ] BSTR                        pVal      );
        [propget, id(DISPID_SAF_SESS__USERNAME   )] HRESULT UserName   (
        [out, retval] BSTR                        *pVal      );
        [propput, id(DISPID_SAF_SESS__USERNAME   )] HRESULT UserName   (
        [in          ] BSTR                        pVal      );
    };

    [
        object,
        uuid(F120A684-B926-447F-9DF4-C966CB785648),
        dual,
        nonextensible,
        helpstring("IRASrv Interface"),
        pointer_default(unique)
    ]
    interface IRASrv : IDispatch{
        [id(1), helpstring("method GetNoviceUserInfo")] HRESULT GetNoviceUserInfo(
        [in,out] LPWSTR * szName);
        [id(2), helpstring("method GetSessionInfo")] HRESULT GetSessionInfo(
        [in,out] SAFEARRAY(BSTR) * UserNames, [in,out] INT * Count);
    };

    [
        uuid(833E4010-AFF7-4AC3-AAC2-9F24C1457BCE),
        helpstring("PCHService Class")
    ]
    coclass PCHService
    {
        [default] interface IPCHService;
    }

    [
        uuid(3C3A70A7-A468-49B9-8ADA-28E11FCCAD5D),
        helpstring("RASrv Class")
    ]
    coclass RASrv
    {
        [default] interface IRASrv;
    };

```

## 8 Appendix C: Product Behavior

The information in this specification is applicable to the following Microsoft products or supplemental software. References to product versions include released service packs:

- Windows® XP operating system
- Windows Server® 2003 operating system
- Windows Vista® operating system
- Windows Server® 2008 operating system
- Windows® 7 operating system
- Windows Server® 2008 R2 operating system

Exceptions, if any, are noted below. If a service pack or Quick Fix Engineering (QFE) number appears with the product version, behavior changed in that service pack or QFE. The new behavior also applies to subsequent service packs of the product unless otherwise specified. If a product edition appears with the product version, behavior is different in that product edition.

Unless otherwise specified, any statement of optional behavior in this specification that is prescribed using the terms SHOULD or SHOULD NOT implies product behavior in accordance with the SHOULD or SHOULD NOT prescription. Unless otherwise specified, the term MAY implies that the product does not follow the prescription.

[<1> Section 1.3:](#) Windows implements expert authentication using the Offer Remote Assistance Helpers Group. DCOM will only allow members of this group to execute the Remote Assistance Initiation Protocol methods.

[<2> Section 1.7:](#)

- Windows Vista, Windows Server 2008, Windows 7, and Windows Server 2008 R2 implement IRASrv. A Windows Vista, Windows Server 2008, Windows 7, or Windows Server 2008 R2 novice can be initiated only through IRASrv.
- Windows XP and Windows Server 2003 implement IPCHService. A Windows XP or Windows Server 2003 novice can be initiated only through IPCHService.
- Windows Vista, Windows Server 2008, Windows 7, and Windows Server 2008 R2 expert first attempt to call IRASrv, and if it fails, they then attempt to call the IPCHService interface.
- Windows XP and Windows Server 2003 expert will only attempt to call IPCHService and will not be able to connect to a Windows Vista, Windows Server 2008, Windows 7, or Windows Server 2008 R2 novice.

[<3> Section 2.2.1:](#) This form of the Remote Assistance Connection String is obtained from Remote Assistance running on a Windows XP or Windows Server 2003 Novice.

[<4> Section 2.2.2:](#) This form of the Remote Assistance Connection String is obtained from Remote Assistance running on a Windows Vista, Windows Server 2008, Windows 7, or Windows Server 2008 R2 novice computer.

[<5> Section 3.1.4.1:](#) This interface and its called interfaces, IPCHCollection and ISAFSession, are only called by Windows XP and Windows Server 2003.

<6> [Section 3.1.4.1.1](#): Gaps in the opnum numbering sequence apply to Windows as follows.

Opnum	Description
3-4	Only used locally by Windows, never remotely.

<7> [Section 3.1.4.1.1](#): Access denied error is returned only for Windows XP SP1 and the initial release of Windows Server 2003 (it is not returned by Windows Server 2003 with SP1 or later releases.)

<8> [Section 3.1.4.1.2](#): Access denied error is returned only for Windows XP SP1 and the initial release of Windows Server 2003 (it is not returned by Windows Server 2003 with SP1 or later releases.)

<9> [Section 3.1.4.1.2.1](#): Gaps in the opnum numbering sequence apply to Windows as follows.

Opnum	Description
3-4	Only used locally by Windows, never remotely.

<10> [Section 3.1.4.1.2.2](#): Gaps in the opnum numbering sequence apply to Windows as follows.

Opnum	Description
3-4	Only used locally by Windows, never remotely.

<11> [Section 3.3.4.1](#): This interface is used only by Windows Vista, Windows Server 2008, Windows 7, and Windows Server 2008 R2.

<12> [Section 3.3.4.1](#): Gaps in the opnum numbering sequence apply to Windows as follows.

Opnum	Description
3-4	Only used locally by Windows, never remotely.

<13> [Section 5.1](#): For DCOM authentication/authorization in Windows Vista, Windows Server 2008, Windows 7, and Windows Server 2008 R2, the following are used:

- Authentication Service - RPC\_C\_AUTHN\_WINNT
- Authorization Service - RPC\_C\_AUTHZ\_DEFAULT
- Authentication Level - RPC\_C\_AUTHN\_LEVEL\_PKT\_PRIVACY
- Impersonation Level - RPC\_C\_IMP\_LEVEL\_IMPERSONATE

For DCOM authentication/authorization in Windows XP and Windows Server 2003, all defaults are used.

<14> [Section 6](#): In Windows XP, Windows Server 2003, Windows Vista, Windows Server 2008, Windows 7, and Windows Server 2008 R2, the XML file has the extension MSRCIncident.

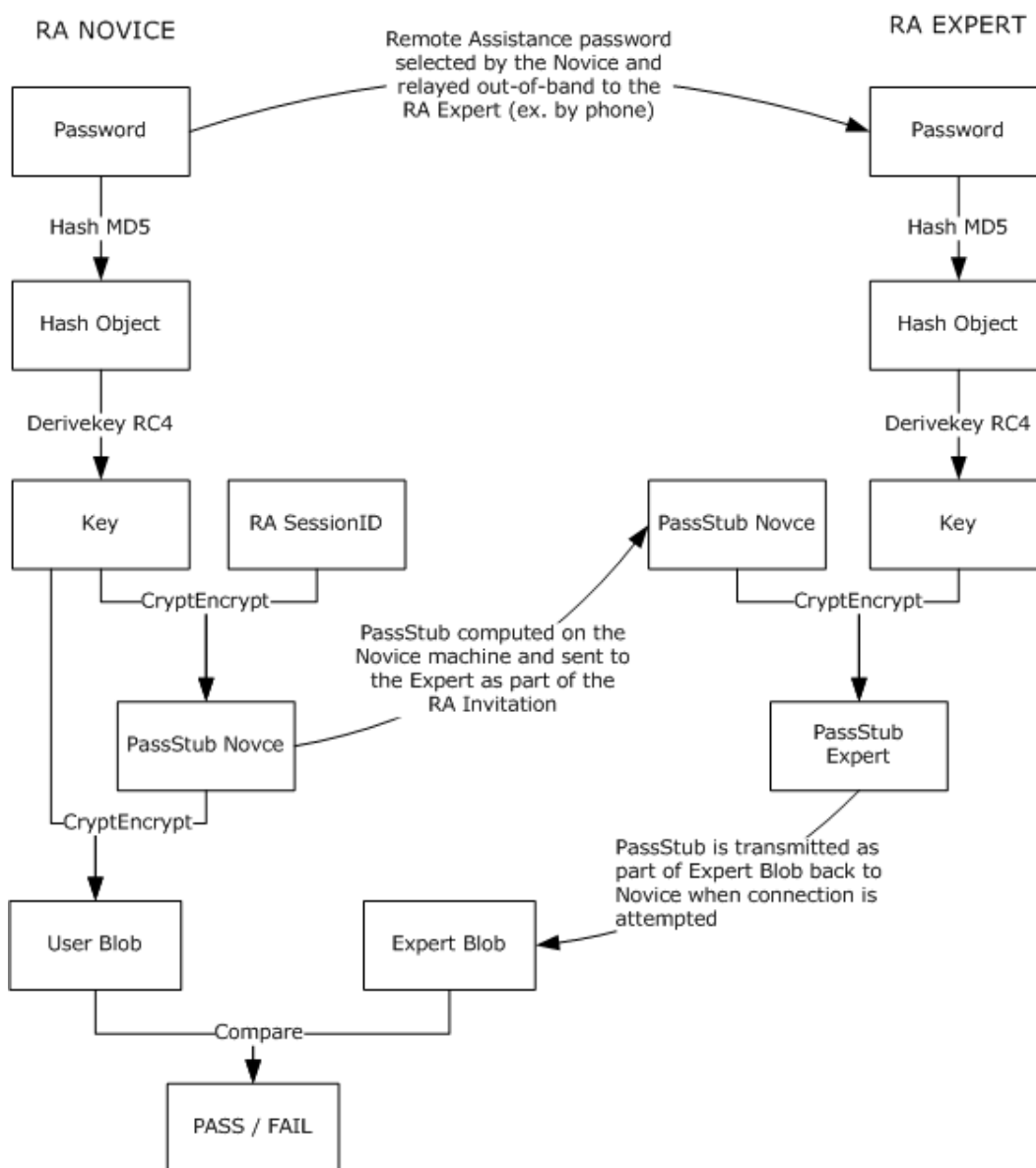
<15> [Section 6](#): This version is specific to Windows XP and Windows Server 2003.

<16> [Section 6](#): A password can be used in Windows XP and Windows Server 2003. For security reasons it is advisable to protect the RA invitation file using a password.



In Windows XP and Windows Server 2003, when a password is used, it is encrypted using PROV\_RSA\_FULL predefined Cryptographic provider with MD5 hashing and CALG\_RC4, the RC4 stream encryption algorithm. More details are in the [Cryptography Reference \[MSDN-CRYPTO\]](#).

Following is the password encryption flow diagram in the case of Windows XP and Windows Server 2003.



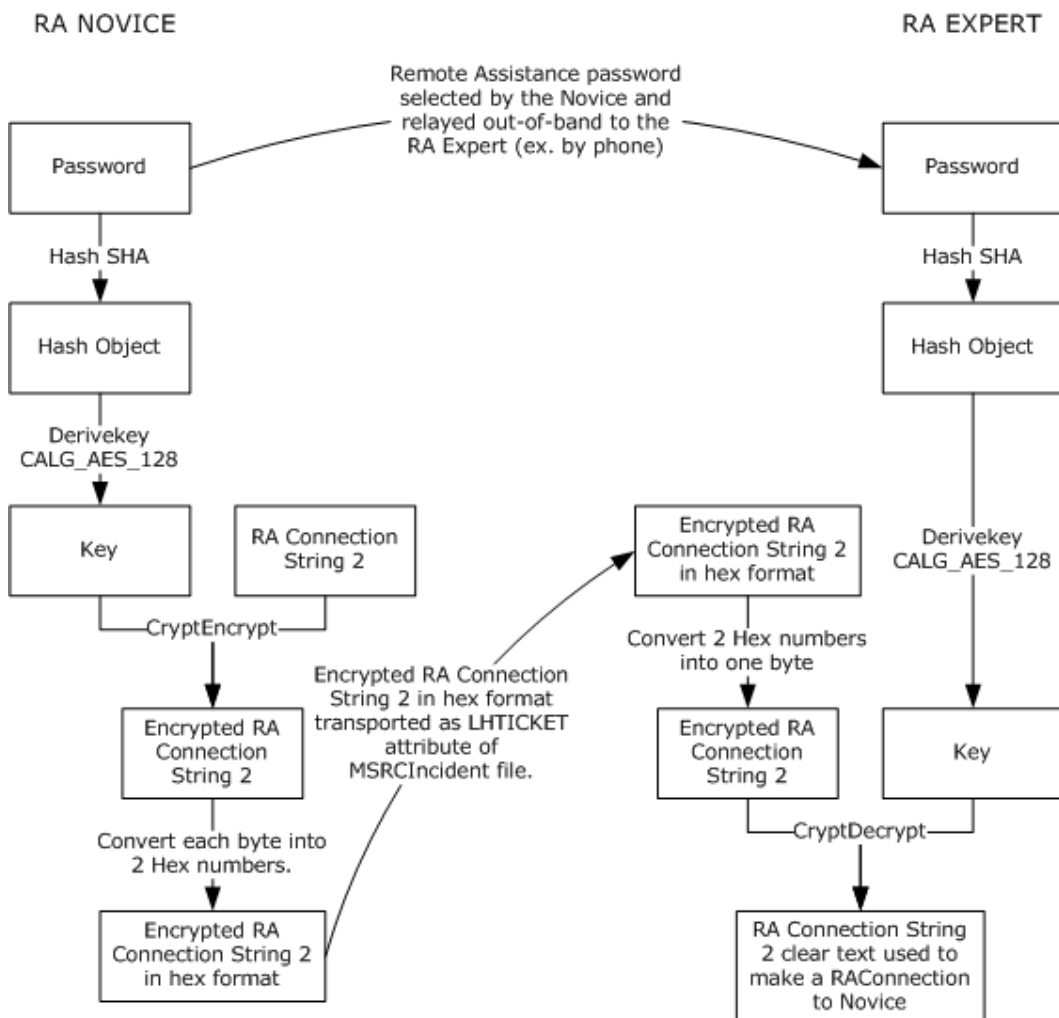
**Figure 2: Windows XP and Windows Server 2003 password encryption flow**

The password is translated into a Unicode string before it is hashed. Also, the **passStub** should be prefixed with its length, in bytes, when performing the encryption.

<17> [Section 6:](#) This type is specific to Windows Vista, Windows Server 2008, Windows 7, and Windows Server 2008 R2.

<18> Section 6: In Windows Vista, Windows Server 2008, Windows 7, and Windows Server 2008 R2, the password is mandatory and it is encrypted using the MS\_ENH\_RSA\_AES\_PROV predefined Cryptographic provider with CALG\_SHA hashing and the CALG\_AES\_128 encryption algorithm. The cipher mode used can be CRYPT\_MODE\_CBC and the password used during the encryption process is a Unicode string.

Following is the password encryption flow diagram in the case of Windows Vista, Windows Server 2008, Windows 7, and Windows Server 2008 R2:



**Figure 3: Windows Vista, Windows Server 2008, Windows 7, and Windows Server 2008 R2 password encryption flow**

<19> Section 6: This attribute can be present for Windows XP and Windows Server 2003 compatibility.

## 9 Change Tracking

This section identifies changes that were made to the [MS-RAI] protocol document between the May 2011 and June 2011 releases. Changes are classified as New, Major, Minor, Editorial, or No change.

The revision class **New** means that a new document is being released.

The revision class **Major** means that the technical content in the document was significantly revised. Major changes affect protocol interoperability or implementation. Examples of major changes are:

- A document revision that incorporates changes to interoperability requirements or functionality.
- An extensive rewrite, addition, or deletion of major portions of content.
- The removal of a document from the documentation set.
- Changes made for template compliance.

The revision class **Minor** means that the meaning of the technical content was clarified. Minor changes do not affect protocol interoperability or implementation. Examples of minor changes are updates to clarify ambiguity at the sentence, paragraph, or table level.

The revision class **Editorial** means that the language and formatting in the technical content was changed. Editorial changes apply to grammatical, formatting, and style issues.

The revision class **No change** means that no new technical or language changes were introduced. The technical content of the document is identical to the last released version, but minor editorial and formatting changes, as well as updates to the header and footer information, and to the revision summary, may have been made.

Major and minor changes can be described further using the following change types:

- New content added.
- Content updated.
- Content removed.
- New product behavior note added.
- Product behavior note updated.
- Product behavior note removed.
- New protocol syntax added.
- Protocol syntax updated.
- Protocol syntax removed.
- New content added due to protocol revision.
- Content updated due to protocol revision.
- Content removed due to protocol revision.
- New protocol syntax added due to protocol revision.

- Protocol syntax updated due to protocol revision.
- Protocol syntax removed due to protocol revision.
- New content added for template compliance.
- Content updated for template compliance.
- Content removed for template compliance.
- Obsolete document removed.

Editorial changes are always classified with the change type **Editorially updated**.

Some important terms used in the change type descriptions are defined as follows:

- **Protocol syntax** refers to data elements (such as packets, structures, enumerations, and methods) as well as interfaces.
- **Protocol revision** refers to changes made to a protocol that affect the bits that are sent over the wire.

The changes made to this document are listed in the following table. For more information, please contact [protocol@microsoft.com](mailto:protocol@microsoft.com).

Section	Tracking number (if applicable) and description	Major change (Y or N)	Change type
<a href="#">1.2 References</a>	Added explanatory statement regarding the removal of the publishing year from Microsoft Open Specification document references.	N	Content updated.

## 10 Index

[\\_NewEnum \[Protocol\]](#) 20  
[\\_NewEnum method](#) 20

### A

Abstract data model  
    [IPCHService client](#) 26  
    [IPCHService server](#) 16  
    [IRASrv client](#) 30  
    [IRASrv server](#) 28  
[Applicability](#) 9

### C

[Capability negotiation](#) 10  
[Change tracking](#) 43  
[Common data types](#) 12  
[Count \[Protocol\]](#) 21  
[Count method](#) 21

### D

Data model - abstract  
    [IPCHService client](#) 26  
    [IPCHService server](#) 16  
    [IRASrv client](#) 30  
    [IRASrv server](#) 28  
[Data types](#) 12  
DomainName [Protocol] ([section 3.1.4.1.2.2.1](#) 22,  
    [section 3.1.4.1.2.2.2](#) 23)  
DomainName method ([section 3.1.4.1.2.2.1](#) 22,  
    [section 3.1.4.1.2.2.2](#) 23)

### E

[Examples - overview](#) 32

### F

[Fields - vendor-extensible](#) 10  
[File formats](#) 34  
[Formats - file](#) 34  
[Full IDL](#) 36

### G

[GetNoviceUserInfo method](#) 29  
[GetSessionInfo method](#) 29  
[Glossary](#) 6

### I

[IDL](#) 36  
[Implementer - security considerations](#) 33  
[Index of security parameters](#) 33  
[Informative references](#) 7  
Initialization  
    [IPCHService client](#) 27

[IPCHService server](#) 16  
[IRASrv client](#) 31  
[IRASrv server](#) 28

### Introduction

IPCHCollection

[\\_NewEnum method \[Protocol\]](#) 20  
    [Count method \[Protocol\]](#) 21  
    [Item method \[Protocol\]](#) 20

[IPCHCollection \[Protocol\]](#) 19

IPCHService

[RemoteConnectionParms method \[Protocol\]](#) 17  
    [RemoteUserSessionInfo method \[Protocol\]](#) 19

[IPCHService \[Protocol\] - described](#) 16

IPCHService client

[abstract data model](#) 26  
    [initialization](#) 27  
    [local events](#) 27  
    [message processing](#) 27  
    [overview](#) 26  
    [sequencing rules](#) 27  
    [timer events](#) 27  
    [timers](#) 27

IPCHService server

[abstract data model](#) 16  
    [initialization](#) 16  
    [local events](#) 26  
    [message processing](#) 16  
    [overview](#) 16  
    [sequencing rules](#) 16  
    [timer events](#) 26  
    [timers](#) 16

IRASrv client

[abstract data model](#) 30  
    [initialization](#) 31  
    [local events](#) 31  
    [message processing](#) 31  
    [overview](#) 30  
    [sequencing rules](#) 31  
    [timer events](#) 31  
    [timers](#) 31

IRASrv server

[abstract data model](#) 28  
    [initialization](#) 28  
    [local events](#) 30  
    [message processing](#) 28  
    [overview](#) 28  
    [sequencing rules](#) 28  
    [timer events](#) 30  
    [timers](#) 28

ISAFSession

    DomainName method [Protocol] ([section 3.1.4.1.2.2.1](#) 22, [section 3.1.4.1.2.2.2](#) 23)  
    SessionID method [Protocol] ([section 3.1.4.1.2.2.3](#) 23, [section 3.1.4.1.2.2.4](#) 24)  
    SessionState method [Protocol] ([section 3.1.4.1.2.2.5](#) 24, [section 3.1.4.1.2.2.6](#) 25)  
    UserName method [Protocol] ([section 3.1.4.1.2.2.7](#) 25, [section 3.1.4.1.2.2.8](#) 26)

[ISAFSession \[Protocol\]](#) 21  
[Item \[Protocol\]](#) 20  
[Item method](#) 20

## L

Local events  
[IPCHService client](#) 27  
[IPCHService server](#) 26  
[IRASrv client](#) 31  
[IRASrv server](#) 30

## M

Message processing  
[IPCHService client](#) 27  
[IPCHService server](#) 16  
[IRASrv client](#) 31  
[IRASrv server](#) 28

Messages  
[data types](#) 12  
[transport](#) 12

## N

[Normative references](#) 7

## O

[Overview \(synopsis\)](#) 7

## P

[Parameters - security index](#) 33  
[Preconditions](#) 9  
[Prerequisites](#) 9  
[Product behavior](#) 39

## R

References  
[informative](#) 7  
[normative](#) 7  
[Relationship to other protocols](#) 8  
[Remote Assistance Connection String 1 packet](#) 12  
[Remote Assistance Connection String 2 packet](#) 13  
[RemoteConnectionParms \[Protocol\]](#) 17  
[RemoteConnectionParms method](#) 17  
[RemoteUserSessionInfo \[Protocol\]](#) 19  
[RemoteUserSessionInfo method](#) 19

## S

Security  
[implementer considerations](#) 33  
[parameter index](#) 33  
Sequencing rules  
[IPCHService client](#) 27  
[IPCHService server](#) 16  
[IRASrv client](#) 31  
[IRASrv server](#) 28

[SessionID \[Protocol\]](#) ([section 3.1.4.1.2.2.3](#) 23,  
[section 3.1.4.1.2.2.4](#) 24)  
[SessionID method](#) ([section 3.1.4.1.2.2.3](#) 23,  
[section 3.1.4.1.2.2.4](#) 24)  
[SessionState \[Protocol\]](#) ([section 3.1.4.1.2.2.5](#) 24,  
[section 3.1.4.1.2.2.6](#) 25)  
[SessionState method](#) ([section 3.1.4.1.2.2.5](#) 24,  
[section 3.1.4.1.2.2.6](#) 25)  
[SessionStateEnum \[Protocol\]](#) 14  
[SessionStateEnum enumeration](#) 14  
[Standards assignments](#) 10

## T

Timer events  
[IPCHService client](#) 27  
[IPCHService server](#) 26  
[IRASrv client](#) 31  
[IRASrv server](#) 30  
Timers  
[IPCHService client](#) 27  
[IPCHService server](#) 16  
[IRASrv client](#) 31  
[IRASrv server](#) 28  
[Tracking changes](#) 43  
[Transport](#) 12

## U

[UserName \[Protocol\]](#) ([section 3.1.4.1.2.2.7](#) 25,  
[section 3.1.4.1.2.2.8](#) 26)  
[UserName method](#) ([section 3.1.4.1.2.2.7](#) 25,  
[section 3.1.4.1.2.2.8](#) 26)

## V

[Vendor-extensible fields](#) 10  
[Versioning](#) 10

## X

[XML files](#) 34