

Contents**Home****Parallel Port****Inpout32****Dll Tutorial****DSP tutorial****Digital Filters****Convolution****Discrete Fourier Transform****Fast Fourier Transform**

Ads by Google

Parallel Port Capture

Create PDF, JPG, PNG or TIFF using Print2PC plug and play hardware.
www.pcl.to

NTPort Library

Real-time directly access I/O ports Inport/Outport under Windows NT
www.ntportlibrary.com

Serial Port Programming

in Visual C++, C, VB, Delphi etc Virtual Serial RS232 Communication
www.eltima.com

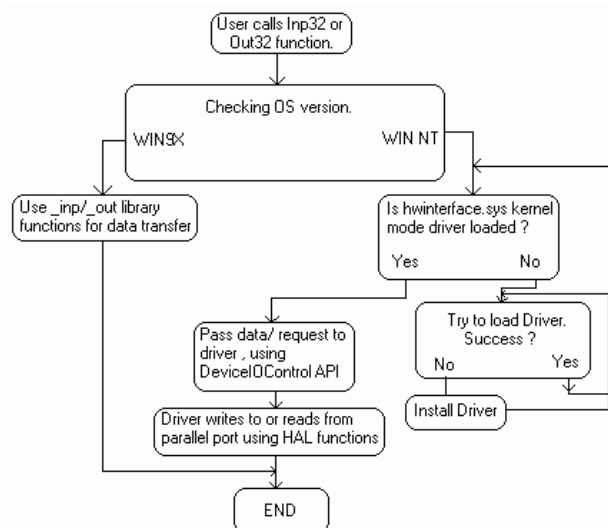
Logix4u.net

How Inpout32.dll works

If you don't know what is Inpout32.dll, please [read it here](#) and then continue.

How it works

The outstanding feature of Inpout32.dll is , it can work with all the windows versions without any modification in user code or the DLL itself. This tutorial describes how it is achieved, what programming methods used, what are the APIs used, etc.... The Dll will check the operating system version when function: are called, and if the operating system is WIN9X, the DLL will use _inp() and _outp functions for reading/writing the parallel port. On the other hand, if the operating system is WIN NT, 2000 or XP, it will install a kernel mode driver and talk to parallel port through that driver. The user code will not be aware of the OS version on which it is running. This DLL can be used in WIN NT clone operating systems as if it is WIN9X. The flow chart of the program is given below.



The two important building blocks of this program are

- 1) A kernel mode device driver embedded in the DLL in binary form
- 2) The DLL itself

Kernel mode driver Hwinterface.sys

The source code of Hwinterface.sys kernel mode driver is located in "kernel_mode_driver_source" directory. Where "hwinterfacedrv.c" is the main application source file. Three functions implemented in the driver are

- 1) 'DriverEntry' , Called when driver is loaded. Creates device object and symbol links.
- 2) 'hwinterfaceUnload', Called when driver is unloaded, performs clean up
- 3) 'hwinterfaceDeviceControl', handles calls made through DeviceIOControl API. Performs reading writing to the parallel port according to the control code passed.

The DLL Inpout32

The functions in the DLL are implemented in two source files, "inpout32drv.cpp" and "osversion.cpp". osversion.cpp checks the version of operating system. "inpout32drv.cpp" does installing the kernel mode driver, loading it , writing/ reading parallel port etc... The two functions exported from inpout32.dll are

- 1) 'Inp32', reads data from a specified parallel port register.
- 2) 'Out32', writes data to specified parallel port register.

the other functions implemented in Inpout32.dll are

- 1) 'DllMain', called when dll is loaded or unloaded. When the dll is loaded , it checks the OS version and loads hwinterface.sys if needed.
- 2) 'Closedriver', close the opened driver handle. called before unloading the driver.
- 3) 'Opendriver', open a handle to hwinterface driver.
- 4) 'inst' , Extract 'hwinterface.sys' from binary resource to 'systemroot\drivers' directory and creates a service. This function is called when 'Opendriver' function fails to open a valid handle to 'hwinterface' service.
- 5) 'start' , starts the hwinterface service using Service Control Manager APIs.
- 6) 'SystemVersion' Checks the OS version and returns appropriate code.

What is hwinterface.ocx ActiveX control

It is an activex control with same features of Inpout32.dll. It can be used either with VC++ or VB. But it gives great convenience when used with VB. Data can be written to parallel port using Output method and can be read using Input method.

[Download Inpout32.dll and source code here](#)

Useful links

[Windows NT/Windows 2000/WDM Driver FAQ by Jamie E. Hanrahan](#)

[Programming Windows Driver Model by Walter Oney](#)

Details of all the APIs used is available at [MSDN Online](#)

[Ads by Google](#)

[IO DLL](#)

[Visual Basic Parallel](#)

[VB Parallel](#)

[LPT Programming](#)

[\[Home\]](#)