



82540EM Gigabit Ethernet Controller

Networking Silicon

Datasheet

Product Features

- **PCI Bus**
 - PCI Revision 2.3 support for 32-bit wide interface at 33 MHz and 66 MHz
 - Algorithms that optimally use advanced PCI, MWI, MRM, and MRL commands
- **MAC Specific**
 - Low-latency transmit and receive queues
 - IEEE 802.3x-compliant flow-control support with software-controllable thresholds
 - Caches up to 64 packet descriptors in a single burst
 - Programmable host memory receive buffers (256 B to 16 KB) and cache line size (16 B to 256 B)
 - Wide, optimized internal data path architecture
 - 64 KB configurable Transmit and Receive FIFO buffers
- **PHY Specific**
 - Integrated for 10/100/1000 Mb/s operation full and half duplex operation
 - IEEE 802.3ab Auto-Negotiation support
 - IEEE 802.3ab PHY compliance and compatibility.
 - State-of-the-art DSP architecture implements digital adaptive equalization, echo cancellation, and cross-talk cancellation
 - Automatic detection of cable lengths and MDI vs. MDI-X cable at all speeds
- **Host Off-Loading**
 - Transmit and receive IP, TCP, and UDP checksum off-loading capabilities
 - Transmit TCP segmentation
 - Advanced packed filtering
 - Jumbo frame support up to 16 KB
 - IEEE 802.1q VLAN support with VLAN tag insertion, stripping and packet filtering for up to 4096 VLAN tags
 - Descriptor ring management hardware for transmit and receive
 - Interrupt coalescing (multiple packets per interrupt)
 - Jumbo frame support
- **Manageability**
 - Manageability features: SMB port, ASF 1.0, ACPI, Wake on LAN, and PXE
 - On-board SMB port
 - Compliance with PCI Power Management 1.1 and ACPI 2.0 register set compliant
 - SNMP and RMON statistic counters
 - SDG 3.0, WfM 2.0, and PC2001 compliance
- **Additional Device**
 - Four activity and link indication outputs that directly drive LEDs
 - JTAG (IEEE 1149.1) Test Access Port built in silicon
 - Internal PLL for clock generation can use a 25 MHz crystal
 - Programmable LED functionality



INFORMATION IN THIS DOCUMENT IS PROVIDED IN CONNECTION WITH INTEL PRODUCTS. NO LICENSE, EXPRESS OR IMPLIED, BY ESTOPPEL OR OTHERWISE, TO ANY INTELLECTUAL PROPERTY RIGHTS IS GRANTED BY THIS DOCUMENT. EXCEPT AS PROVIDED IN INTEL'S TERMS AND CONDITIONS OF SALE FOR SUCH PRODUCTS, INTEL ASSUMES NO LIABILITY WHATSOEVER, AND INTEL DISCLAIMS ANY EXPRESS OR IMPLIED WARRANTY, RELATING TO SALE AND/OR USE OF INTEL PRODUCTS INCLUDING LIABILITY OR WARRANTIES RELATING TO FITNESS FOR A PARTICULAR PURPOSE, MERCHANTABILITY, OR INFRINGEMENT OF ANY PATENT, COPYRIGHT OR OTHER INTELLECTUAL PROPERTY RIGHT.

Intel products are not intended for use in medical, life saving, or life sustaining applications.

Intel may make changes to specifications and product descriptions at any time, without notice.

Designers must not rely on the absence or characteristics of any features or instructions marked "reserved" or "undefined." Intel reserves these for future definition and shall have no responsibility whatsoever for conflicts or incompatibilities arising from future changes to them.

The Intel products referenced in this document may contain design defects or errors known as errata which may cause the product to deviate from published specifications. Current characterized errata are available on request.

Contact your local Intel sales office or your distributor to obtain the latest specifications and before placing your product order.

Copies of documents which have an order number and are referenced in this document, or other Intel literature may be obtained by calling 1-800-548-4725 or by visiting Intel's website at <http://www.intel.com>.

*Other names and brands may be claimed as the property of others.

Copyright © Intel Corporation, 2002-2004

Revision History

Date	Revision	Notes
May 2002	0.25	Initial Release
Nov 2002	1.0	Section 3.6. Test Signal from O to I. Figures 7-8 added Section 5.2. changed 194 balls to 196
Jan 2003	1.1	Section 1.0. Replaced Block Diagram Section 2.6. Added Table footnote Section 4.1, 4.2, 4.3. Replaced tables Section 5.1. Added Visual Pin Reference Section 4.3 Deleted empty row; added footnote to I/O Characteristics table Section 4.4 Removed Power Supply Characteristics table
Apr 2003	1.2	Removed confidential status. Section 1.0. Added product ordering code information.
Sep 2004	1.3	Removed references to REQ64#. This was a typing error and references to REQ64# should be "REQ#" since the 82540EM is a 32-bit part.
Nov 2004	1.4	Added product features to cover. Updated signal names to match design guide and reference schematics.
Nov 2004	1.5	Added information about migrating from a 2-layer 0.36 mm wide-trace substrate to a 2-layer 0.32 mm wide-trace substrate. Refer to the section on Package and Pinout Information. Added statement that no changes to existing soldering processes are needed for the 2-layer 0.32 mm wide-trace substrate change in the section describing "Package Information". Corrected pinout discrepancies between Table 36 and the section "Visual Pin Reference".



Note: This page left intentionally blank.

Contents

1.0	Introduction	1
1.1	Document Scope	1
1.2	Reference Documents	2
1.3	Block Diagram	3
2.0	Product Code	5
3.0	Signal Descriptions	7
3.1	Signal Type Definitions	7
3.2	PCI Bus Interface	7
3.2.1	PCI Address, Data and Control Signals	7
3.2.2	Arbitration Signals	8
3.2.3	Interrupt Signal	9
3.2.4	System Signals	9
3.2.5	Error Reporting Signals	9
3.2.6	Power Management Signals	10
3.2.7	Impedance Compensation Signals	10
3.2.8	SMB Signals	10
3.3	EEPROM and Flash Interface Signals	11
3.4	Miscellaneous Signals	12
3.4.1	LED Signals	12
3.4.2	Other Signals	12
3.5	PHY Signals	12
3.5.1	Crystal Signals	12
3.5.2	Analog Signals	13
3.6	Test Interface Signals	13
3.7	Power Supply Connections	14
3.7.1	Digital Supplies	14
3.7.2	Analog Supplies	14
3.7.3	Ground and No Connects	14
3.7.4	Control Signals	14
4.0	Voltage, Temperature, and Timing Specifications	15
4.1	Absolute Maximum Ratings	15
4.2	Recommended Operating Conditions	15
4.3	DC Specifications	15
4.4	AC Characteristics	18
4.5	Timing Specifications	19
4.5.1	PCI Bus Interface	19
4.5.2	Link Interface Timing	24
4.5.3	EEPROM Interface	24



5.0 Package and Pinout Information 27

5.1 Device Identification 27

5.2 Package Information 28

5.3 Thermal Specifications 29

5.4 Pinout Information 30

5.5 Visual Pin Reference..... 39

1.0 Introduction

The Intel® 82540EM Gigabit Ethernet Controller is a single, compact component with an integrated Gigabit Ethernet Media Access Control (MAC) and physical layer (PHY) functions. For desktop, workstation and mobile PC Network designs with critical space constraints, the Intel® 82540EM allows for a Gigabit Ethernet implementation in a very small area that is footprint compatible with current generation 10/100 Mbps Fast Ethernet designs

The Intel® 82540EM integrates Intel's fourth generation gigabit MAC design with fully integrated, physical layer circuitry to provide a standard IEEE 802.3 Ethernet interface for 1000BASE-T, 100BASE-TX, and 10BASE-T applications (802.3, 802.3u, and 802.3ab). The controller is capable of transmitting and receiving data at rates of 1000 Mbps, 100 Mbps, or 10 Mbps. In addition to managing MAC and PHY layer functions, the controller provides a 32-bit wide direct Peripheral Component Interconnect (PCI) 2.2 compliant interface capable of operating at 33 or 66 MHz.

The Intel® 82540EM's on-board System Management Bus (SMB) port enables network manageability implementations required by information technology personnel for remote control and alerting via the LAN. With SMB, management packets can be routed to or from a management processor. The SMB port enables industry standards, such as Intelligent Platform Management Interface (IPMI) and Alert Standard Forum (ASF), to be implemented using the 82540EM. In addition, on chip ASF 1.0 circuitry provides alerting and remote control capabilities with standardized interfaces.

The 82540EM Gigabit Ethernet Controller architecture is designed to deliver high performance and PCI bus efficiency. Wide internal data paths eliminate performance bottlenecks by efficiently handling large address and data words. The 82540EM controller includes advanced interrupt handling features to limit PCI bus traffic and a PCI interface that maximizes the use of bursts for efficient bus usage. The 82540EM caches up to 64 packet descriptors in a single burst for efficient PCI bandwidth use. A large 64 KByte on-chip packet buffer maintains superior performance as available PCI bandwidth changes. In addition, using hardware acceleration, the controller offloads tasks from the host controller, such as TCP/UDP/IP checksum calculations and TCP segmentation.

The 82540EM is packaged in a 15 mm² 196-ball grid array and is pin compatible with the Intel® 82551QM 10/100 Mbps Fast Ethernet Multifunction PCI/CardBus Controller.

1.1 Document Scope

This document contains datasheet specifications for the 82540EM Gigabit Ethernet Controller, including signal descriptions, DC and AC parameters, packaging data, and pinout information.

1.2 Reference Documents

This application assumes that the designer is acquainted with high-speed design and board layout techniques. The following documents provide additional information:

- 82544EI/82544GC Gigabit Ethernet Controller Software Developer's Manual, Revision 0.25, Intel Corporation.
- PCI Local Bus Specification, Revision 2.3, PCI Special Interest Group.
- PCI Bus Power Management Interface Specification, Rev. 1.1, PCI Special Interest Group.
- IEEE Standard 802.3, 1996 Edition, Institute of Electrical and Electronics Engineers (IEEE).
- IEEE Standard 802.3u, 1995 Edition, Institute of Electrical and Electronics Engineers (IEEE).
- IEEE Standard 802.3x, 1997 Edition, Institute of Electrical and Electronics Engineers (IEEE).
- IEEE Standard 802.3z, 1998 Edition, Institute of Electrical and Electronics Engineers (IEEE).
- IEEE Standard 802.3ab, 1999 Edition, Institute of Electrical and Electronics Engineers (IEEE).
- Intel Ethernet Controllers Timing Device Selection Guide, AP-419, Intel Corporation.
- PCI Mobile Design Guide, Rev. 1.1, PCI Special Interest Group
- 82562EZ(EX)/82551QM & 82540EM Combined Footprint LOM Design Guide, AP-434, Intel Corporation.

1.3 Block Diagram

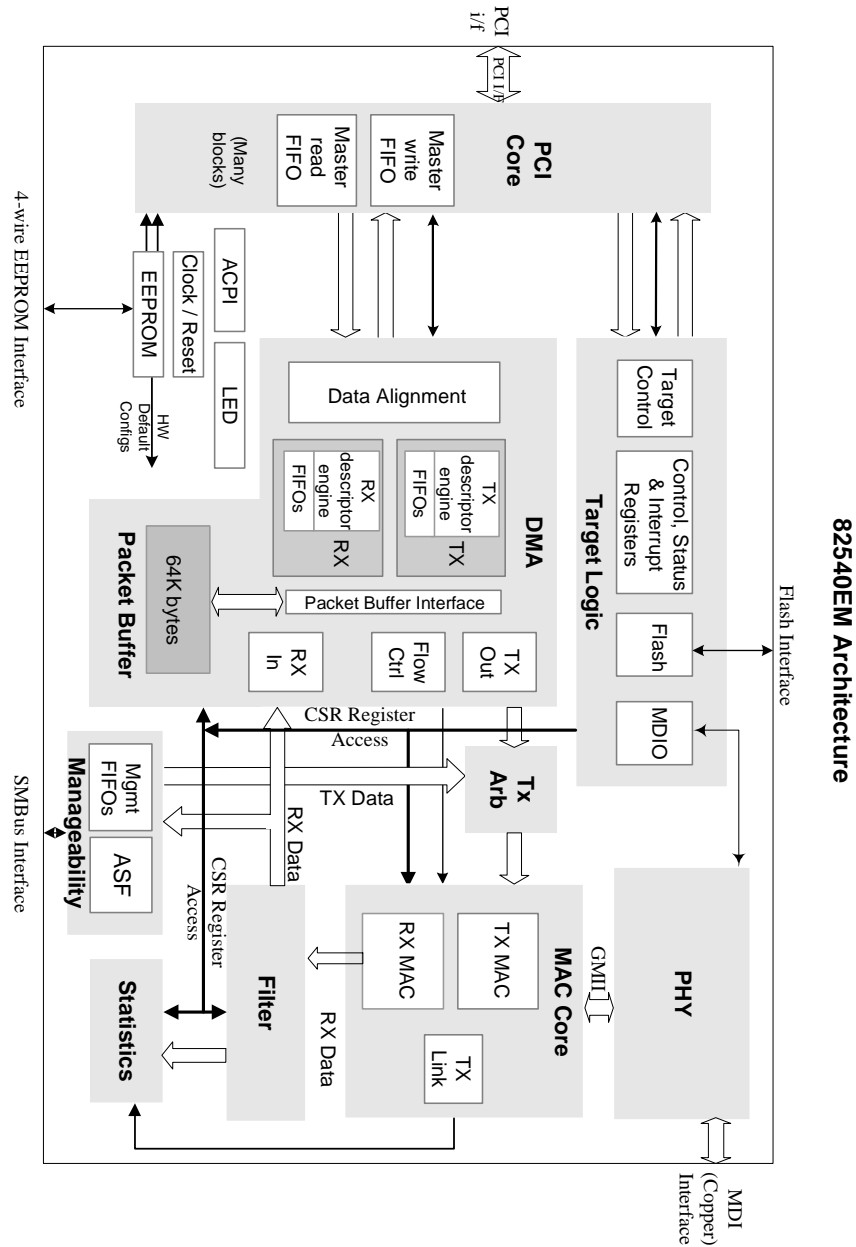


Figure 1. 82540EM Block Diagram



Note: This page is intentionally left blank.

2.0 Product Code

The product ordering code for the 82540EM is: RC82540EM.



Note: This page intentionally left blank.

3.0 Signal Descriptions

3.1 Signal Type Definitions

The signals of the 82540EM controller are electrically defined as follows:

Name	Definition
I	Input. Standard input only digital signal.
O	Output. Standard output only digital signal.
TS	Tri-state. Bi-directional three-state digital input/output signal.
STS	Sustained Tri-state. Sustained digital three-state signal driven by one agent at a time. An agent driving the STS pin low must actively drive it high for at least one clock before letting it float. The next agent of the signal cannot drive the pin earlier than one clock after it has been released by the previous agent.
OD	Open Drain. Wired-OR with other agents. The signaling agent asserts the OD signal, but the signal is returned to the inactive state by a weak pull-up resistor. The pull-up resistor may require two or three clock periods to fully restore the signal to the de-asserted state.
A	Analog. PHY analog data signal.
P	Power. Power connection, voltage reference, or other reference connection.

3.2 PCI Bus Interface

When the Reset signal (RST#) is asserted, the 82540EM will not drive any PCI output or bi-directional pins except the Power Management Event signal (PME#).

3.2.1 PCI Address, Data and Control Signals

Symbol	Type	Name and Function
AD[31:0]	TS	Address and Data. Address and data signals are multiplexed on the same PCI pins. A bus transaction includes an address phase followed by one or more data phases. The address phase is the clock cycle when the Frame signal (FRAME#) is asserted low. During the address phase AD[31:0] contain a physical address (32 bits). For I/O, this is a byte address, and for configuration and memory, a DWORD address. The 82540EM device uses little endian byte ordering. During data phases, AD[7:0] contain the least significant byte (LSB) and AD[31:24] contain the most significant byte (MSB).
C/BE#[3:0]	TS	Bus Command and Byte Enables. Bus command and byte enable signals are multiplexed on the same PCI pins. During the address phase of a transaction, C/BE#[3:0] define the bus command. In the data phase, C/BE#[3:0] are used as byte enables. The byte enables are valid for the entire data phase and determine which byte lanes contain meaningful data. C/BE#[0] applies to byte 0 (LSB) and C/BE#[3] applies to byte 3 (MSB).

Symbol	Type	Name and Function
PAR	TS	<p>Parity. The Parity signal is issued to implement even parity across AD[31:0] and C/BE[#3:0]. PAR is stable and valid one clock after the address phase. During data phases, PAR is stable and valid one clock after either IRDY# is asserted on a write transaction or TRDY# is asserted after a read transaction. Once PAR is valid, it remains valid until one clock after the completion of the current data phase.</p> <p>When the 82540EM controller is a bus master, it drives PAR for address and write data phases, and as a slave device, drives PAR for read data phases.</p>
FRAME#	STS	<p>Cycle Frame. The Frame signal is driven by the 82540EM device to indicate the beginning and length of an access and indicate the beginning of a bus transaction. While FRAME# is asserted, data transfers continue. FRAME# is de-asserted when the transaction is in the final data phase.</p>
IRDY#	STS	<p>Initiator Ready. Initiator Ready indicates the ability of the 82540EM controller (as bus master device) to complete the current data phase of the transaction. IRDY# is used in conjunction with the Target Ready signal (TRDY#). The data phase is completed on any clock when both IRDY# and TRDY# are asserted.</p> <p>During the write cycle, IRDY# indicates that valid data is present on AD[31:0]. For a read cycle, it indicates the master is ready to accept data. Wait cycles are inserted until both IRDY# and TRDY# are asserted together. The 82540EM controller drives IRDY# when acting as a master and samples it when acting as a slave.</p>
TRDY#	STS	<p>Target Ready. The Target Ready signal indicates the ability of the 82540EM controller (as a selected device) to complete the current data phase of the transaction. TRDY# is used in conjunction with the Initiator Ready signal (IRDY#). A data phase is completed on any clock when both TRDY# and IRDY# are sampled asserted.</p> <p>During a read cycle, TRDY# indicates that valid data is present on AD[31:0]. For a write cycle, it indicates the target is ready to accept data. Wait cycles are inserted until both IRDY# and TRDY# are asserted together. The 82540EM device drives TRDY# when acting as a slave and samples it when acting as a master.</p>
STOP#	STS	<p>Stop. The Stop signal indicates the current target is requesting the master to stop the current transaction. As a slave, the 82540EM controller drives STOP# to request the bus master to stop the transaction. As a master, the 82540EM controller receives STOP# from the slave to stop the current transaction.</p>
IDSEL#	I	<p>Initialization Device Select. The Initialization Device Select signal is used by the 82540EM as a chip select signal during configuration read and write transactions.</p>
DEVSEL#	STS	<p>Device Select. When the Device Select signal is actively driven by the 82540EM, it signals notifies the bus master that it has decoded its address as the target of the current access. As an input, DEVSEL# indicates whether any device on the bus has been selected.</p>
VIO	P	<p>VIO. The VIO signal is a voltage reference for the PCI interface (3.3 V or 5 V PCI signaling environment). It is used as the clamping voltage.</p> <p>Note: An external resistor is required between the voltage reference and the VIO pin. The target resistor value is 100 K Ω.</p>

3.2.2 Arbitration Signals

Symbol	Type	Name and Function
REQ#	TS	<p>Request Bus. The Request Bus signal is used to request control of the bus from the arbiter. This signal is point-to-point.</p>
GNT#	I	<p>Grant Bus. The Grant Bus signal notifies the 82540EM that bus access has been granted. This is a point-to-point signal.</p>
LOCK#	I	<p>Lock Bus. The Lock Bus signal is asserted by an initiator to require sole access to a target memory device during two or more separate transfers. The 82540EM device does not implement bus locking.</p>

3.2.3 Interrupt Signal

Symbol	Type	Name and Function
INTA#	TS	Interrupt A. Interrupt A is used to request an interrupt by port 1 of the 82540EM. It is an active low, level-triggered interrupt signal.

3.2.4 System Signals

Symbol	Type	Name and Function
CLK	I	PCI Clock. The PCI Clock signal provides timing for all transactions on the PCI bus and is an input to the 82540EM device. All other PCI signals, except the Interrupt A (INTA#) and PCI Reset signal (RST#), are sampled on the rising edge of CLK. All other timing parameters are defined with respect to this edge.
M66EN	I	66 MHz Enable. M66EN indicates whether the system bus is enabled for 66MHz.
RST#	I	PCI Reset. When the PCI Reset signal is asserted, all PCI output signals, except the Power Management Event signal (PME#), are floated and all input signals are ignored. The PME# context is preserved, depending on power management settings. Most of the internal state of the 82540EM is reset on the de-assertion (rising edge) of RST#.

3.2.5 Error Reporting Signals

Symbol	Type	Name and Function
SERR#	OD	System Error. The System Error signal is used by the 82540EM controller to report address parity errors. SERR# is open drain and is actively driven for a single PCI clock when reporting the error.
PERR#	STS	Parity Error. The Parity Error signal is used by the 82540EM controller to report data parity errors during all PCI transactions except by a Special Cycle. PERR# is sustained tri-state and must be driven active by the 82540EM controller two data clocks after a data parity error is detected. The minimum duration of PERR# is one clock for each data phase a data parity error is present.

3.2.6 Power Management Signals

Symbol	Type	Name and Function
LAN_PWR_GOOD	I	Power Good (Power-on Reset). The Power Good signal is used to indicate that stable power is available for the 82540EM. When the signal is low, the 82540EM holds itself in reset state and floats all PCI signals.
PME#	OD	Power Management Event. The 82540EM device drives this signal low when it receives a wake-up event and either the PME Enable bit in the Power Management Control/Status Register or the Advanced Power Management Enable (APME) bit of the Wake-up Control Register (WUC) is 1b.
APM_WAKEUP	O	Advance Power Management Wakeup. When APM Wakeup is enabled in the 82540EM controller and the 82540EM controller receives a Magic Packet* it will set this signal to a logic 1 for 50 ms.
AUX_PWR	I	Auxiliary Power. If the Auxiliary Power signal is high, then auxiliary power is available and the 82540EM device should support the D3cold power state.

3.2.7 Impedance Compensation Signals

Symbol	Type	Name and Function
ZN_COMP	I/O	N Device Impedance Compensation. This signal should be connected to an external precision resistor (to VDD) that is indicative of the PCI trace load. This cell is used to dynamically determine the drive strength required on the N-channel transistors in the PCI I/O cells.
ZP_COMP	I/O	P Device Impedance Compensation. This signal should be connected to an external precision resistor (to VSS) that is indicative of the PCI trace load. This cell is used to dynamically determine the drive strength required on the P-channel transistors in the PCI I/O cells.

3.2.8 SMB Signals

Symbol	Type	Name and Function
SMBCLK	I/O	SMB Clock. The SMB Clock signal is an open drain signal for serial SMB interface.
SMBDATA	I/O	SMB Data. The SMB Data signal is an open drain signal for serial SMB interface.
SMB_ALERT#	O	SMB Alert. The SMB Alert signal is open drain for serial SMB interface.

3.3 EEPROM and Flash Interface Signals

Symbol	Type	Name and Function
EEDI	O	EEPROM Data Input. The EEPROM Data Input pin is used for output to the memory device.
EEDO	I	EEPROM Data Output. The EEPROM Data Output pin is used for input from the memory device. The EE_DO includes an internal pull-up resistor.
EECS	O	EEPROM Chip Select. The EEPROM Chip Select signal is used to enable the device.
EESK	O	EEPROM Serial Clock. The EEPROM Shift Clock provides the clock rate for the EEPROM interface, which is approximately 1 MHz.
FL_CE#	O	FLASH Chip Enable Output. Used to enable FLASH device.
FL_SCK	O	FLASH Serial Clock Output. The clock rate of the serial FLASH interface is approximately 1 MHz.
FL_SI	O	FLASH Serial Data Input. This pin is an output to the memory device.
FLSH_SO	I	FLASH Serial Data Output. This pin is an input from the FLASH memory. It has an internal pullup device.

3.4 Miscellaneous Signals

3.4.1 LED Signals

Symbol	Type	Name and Function
LED0 / LINK_UP#	O	LED0 / LINK Up. Programmable LED indication. Defaults to indicate link connectivity.
LED1 / ACTIVITY#	O	LED1 / Activity. Programmable LED indication. Defaults to flash to indicate transmit or receive activity.
LED2 / LINK100#	O	LED2 / LINK 100. Programmable LED indication. Defaults to indicate link at 100 Mbps.
LED3 / LINK1000#	O	LED3 / LINK 1000. Programmable LED indication. Defaults to indicate link at 1000 Mbps.

3.4.2 Other Signals

Symbol	Type	Name and Function
SDP[7:6] SDP[1:0]	TS	Software Defined Pin. The Software Defined Pins are reserved and programmable with respect to input and output capability. These default to input signals upon power-up but may be configured differently by the EEPROM. The upper four bits may be mapped to the General Purpose Interrupt bits if they are configured as input signals. Note: SDP5 is not included in the group of Software Defined Pins.

3.5 PHY Signals

3.5.1 Crystal Signals

Symbol	Type	Name and Function
XTAL1	I	Crystal One. The Crystal One pin is a 25 MHz +/- 30 ppm input signal. It can be connected to either an oscillator or crystal. If a crystal is used, Crystal Two (XTAL2) must also be connected.
XTAL2	O	Crystal Two. Crystal Two is the output of an internal oscillator circuit used to drive a crystal into oscillation. If an external oscillator is used in the design, XTAL2 must be disconnected.

3.5.2 Analog Signals

Symbol	Type	Name and Function
REF	P	Reference. This Reference signal should be connected to VSS through an external 2.49 K Ω resistor.
MDI[0]+/-	A	Media Dependent Interface [0]. 100BASE-T: In MDI configuration, MDI[0]+/- corresponds to BI_DA+/-, and in MDI-X configuration, MDI[0]+/- corresponds to BI_DB+/-. 100BASE-TX: In MDI configuration, MDI[0]+/- is used for the transmit pair, and in MDI-X configuration, MDI[0]+/- is used for the receive pair. 10BASE-T: In MDI configuration, MDI[0]+/- is used for the transmit pair, and in MDI-X configuration, MDI[0]+/- is used for the receive pair.
MDI[1]+/-	A	Media Dependent Interface [1]. 100BASE-T: In MDI configuration, MDI[1]+/- corresponds to BI_DB+/-, and in MDI-X configuration, MDI[1]+/- corresponds to BI_DA+/-. 100BASE-TX: In MDI configuration, MDI[1]+/- is used for the receive pair, and in MDI-X configuration, MDI[1]+/- is used for the transmit pair. 10BASE-T: In MDI configuration, MDI[1]+/- is used for the receive pair, and in MDI-X configuration, MDI[1]+/- is used for the transmit pair.
MDI[2]+/-	A	Media Dependent Interface [2]. 100BASE-T: In MDI configuration, MDI[2]+/- corresponds to BI_DC+/-, and in MDI-X configuration, MDI[2]+/- corresponds to BI_DD+/-. 100BASE-TX: Unused. 10BASE-T: Unused.
MDI[3]+/-	A	Media Dependent Interface [3]. 100BASE-T: In MDI configuration, MDI[3]+/- corresponds to BI_DD+/-, and in MDI-X configuration, MDI[3]+/- corresponds to BI_DC+/-. 100BASE-TX: Unused. 10BASE-T: Unused.

3.6 Test Interface Signals

Symbol	Type	Name and Function
JTAG_TCK	I	JTAG Clock.
JTAG_TDI	I	JTAG TDI.
JTAG_TDO	O	JTAG TDO.
JTAG_TMS	I	JTAG TMS.
JTAG_TRST#	I	JTAG Reset. This is an active low reset signal for JTAG. This signal should be terminated using a pull-down resistor to ground. It must not be left unconnected.
TEST	I	Factory Test Pin.
CLK_VIEW	O	Clock View. Output for GTX_CLK and RX_CLK during IEEE PHY conformance testing. The clock is selected by register programming.

3.7 Power Supply Connections

3.7.1 Digital Supplies

Symbol	Type	Name and Function
VDDO	P	3.3 V I/O Power Supply.
DVDD	P	1.5 V Digital Core Power Supply.

3.7.2 Analog Supplies

Symbol	Type	Name and Function
AVDDH	P	3.3 V Analog Power Supply.
AVDDL	P	2.5 V Analog Power Supply.

3.7.3 Ground and No Connects

Symbol	Type	Name and Function
GND	P	Ground.
NC	P	No Connect. Do not connect any circuitry to these pins. Pull-up or pull-down resistors should not be connected to these pins.

3.7.4 Control Signals

Symbol	Type	Name and Function
CTRL15	A	1.5V Control. LDO voltage regulator output to drive external pass transistor. If 1.5 V is already present in the system, leave output unconnected.
CTRL25	A	2.5V Control. LDO voltage regulator output to drive external pass transistor. If 2.5 V is already present in the system, leave output unconnected.

4.0 Voltage, Temperature, and Timing Specifications

Note: The specification values listed in this section are subject to change without notice. Verify with your local Intel sales office that you have the latest information before finalizing a design.

4.1 Absolute Maximum Ratings

Table 1. Absolute Maximum Ratings^a

Symbol	Parameter	Min	Max	Unit
V _{DD}	DC supply voltage	-0.3	7.0	V
V _{IN}	Input voltage	-1.0	V _{DD} + 0.3	V
I _{IN}	DC input pin current	-10	10	mA
T _{STG}	Storage temperature	-40	125	°C

a. Maximum ratings are referenced to ground (VSS). Permanent device damage is likely to occur if the ratings in this table are exceeded. These values should not be used as the limits for normal device operations.

4.2 Recommended Operating Conditions

Table 2. Recommended Operating Conditions^a

Symbol	Parameter	Condition	Min	Typ	Max	Unit
T _{OP}	Operating Temperature	na	0	na	70	°C
V _{IO}	VIO Voltage Range	na	3.0	na	5.25	V
V _{DD}	Periphery Voltage Range	3.3 V ± 10%	3.0	3.3	3.6	V
V _{AH}	Analog High V _{DD} Range	3.3 V ± 10%	3.0	3.3	3.6	V
V _D	Core Digital Voltage Range	1.5 V ± 5%	1.425	1.5	1.575	V
V _{AL}	Analog Low V _{DD} Range	2.5 V ± 5%	2.375	2.5	2.625	V

a. Sustained operation of the device at conditions exceeding these values, even if they are within the absolute maximum rating limits, might result in permanent damage.

4.3 DC Specifications

Table 3. DC Characteristics

Symbol	Parameter	Min	Typ	Max	Units
VDD (3.3)	DC supply voltage on VDDO or AVDDH	3.00	3.3	3.60	V
VDD (2.5)	DC supply voltage on AVDDL	2.38	2.5	2.62	V
VDD (1.5)	DC supply voltage on DVDD	1.43	1.5	1.57	V

Table 4. Power Specifications - D0a

	D0a							
	unplugged/no link		@10 Mbps		@100Mbps		@1000Mbps	
	Typ lcc (mA)	Max lcc (mA)	Typ lcc (mA)	Max lcc (mA)	Typ lcc (mA)	Max lcc (mA)	Typ lcc (mA)	Max lcc (mA)
3.3 V	40	40	55	65	65	80	125	125
2.5 V	20	20	30	35	55	60	145	150
1.5 V	100	120	95	100	115	125	400	425
Total Device Power	325 mW		400 mW		525 mW		1.38 W	1.5 W

Table 5. Power Specifications - D3cold

	D3cold - wakeup enabled						D3cold - wake disabled	
	unplugged/no link		@10 Mbps		@100Mbps			
	Typ lcc (mA)	Max lcc (mA)	Typ lcc (mA)	Max lcc (mA)	Typ lcc (mA)	Max lcc (mA)	Typ lcc (mA)	Max lcc (mA)
3.3 V	40	40	55	55	50	50	40	40
2.5 V	20	20	30	30	55	55	20	20
1.5 V	40	40	30	35	55	60	10	10
Total Device Power	240 mW		300 mW		385 mW		195 mW	

Table 6. Power Specifications - D(r)

	D(r) Uninitialized (LAN_PWR_GOOD=0)	
	Typ Icc (mA)	Max Icc (mA)
3.3 V	40	45
2.5 V	40	45
1.5 V	190	200
Total Device Power	520 mW	

Table 7. Power Specifications - Complete Subsystem

	Complete Subsystem (Reference Design) Including Magnetics, LED, Regulator Circuits							
	D3cold wake- disabled		D3cold wake- enabled @10Mbps		D3cold wake- enabled @100Mbps		D0 @1000Mbps active	
	TypIcc (mA)	MaxIcc (mA)	TypIcc (mA)	MaxIcc (mA)	TypIcc (mA)	MaxIcc (mA)	TypIcc (mA)	MaxIcc (mA)
3.3 V	40	40	60	60	60	60	130	130
2.5 V	20	20	40	40	80	80	240	245
1.5 V	10	10	30	35	55	60	400	425
Subsystem 3.3 V current		70 mA		135 mA		200 mA		800 mA

Table 8. I/O Characteristics (Sheet 1 of 2)

Symbol	Parameter	Condition	Min	Typ	Max	Unit
V _{IL}	Voltage input LOW		-0.5		0.8	V
V _{IH}	Voltage input HIGH		2.0		V _{DD} +0.3	V
V _{OL}	Voltage output LOW				0.4	V
V _{OH}	Voltage output HIGH		2.4			V
V _{SH}	Schmitt Trigger Hysteresis		0.1			V
I _{OL} ^a	Output current LOW					
	3mA drivers (TTL3)	V _{OL}	3			mA
	6mA drivers (TTL6)	V _{OL}	6			mA
	12mA drivers (TTL12)	V _{OL}	12			mA

Table 8. I/O Characteristics (Sheet 2 of 2)

Symbol	Parameter	Condition	Min	Typ	Max	Unit
I_{OH}^a	Output current HIGH					
	3mA drivers (TTL3)	V_{OH}	-3			mA
	6mA drivers (TTL6)	V_{OH}	-6			mA
	12mA drivers (TTL12)	V_{OH}	-12			mA
I_{IN}	Input Current					
	TTL inputs	$V_{IN} = V_{DD}$ or V_{SS}	-10	± 1	10	μA
	Inputs with pull-down resistors	$V_{IN} = V_{DD}$	150		480	μA
	TTL inputs with pull-up resistors	$V_{IN} = V_{SS}$	-150		-480	μA
I_{OZ}	3-state output leakage current	$V_{OH} = V_{DD}$ or V_{SS}	-10	± 1	10	μA
C_{IN}	Input capacitance	Any input and bi-directional buffer		2.5		pF
C_{OUT}	Output capacitance	Any output buffer		2.0		pF
C_{PUD}	Pull-up/down Resistor value		7.5		20	K Ω

- a. TTL3 signals include: EEDI, EESK, EECS, and JTAG_TDO.
 TTL6 signals include: APM_WAKEUP, FL_CE#, FL_SCK, FL_SI, and CLK_VIEW.
 TTL12 signals include: LED0/LINK_UP#, LED1/ACTIVITY#, LED2/LINK100#, LED3/LINK1000#, SDP[0], SDP[1], SDP[6], and SDP[7].

4.4 AC Characteristics

Table 9. AC Characteristics: 3.3 V Interfacing

Symbol	Parameter	Min	Typ	Max	Unit
CLK	Clock frequency in PCI mode			66	MHz

Table 10. 25 MHz Clock Input Requirements

Symbol	Parameter ^a	Min	Typ	Max	Unit
fi_TX_CLK	TX_CLK_IN frequency	25 - 30 ppm	25	25 + 30 ppm	MHz

- a. This parameter applies to an oscillator connected to the Crystal One (XTAL1) input. Alternatively, a crystal may be connected to XTAL1 and XTAL2 as the frequency source for the internal oscillator.

Table 11. Link Interface Clock Requirements

Symbol	Parameter	Min	Typ	Max	Unit
fGTX ^a	GTX_CLK frequency		125		MHz

- a. GTX_CLK is used externally for test purposes only.

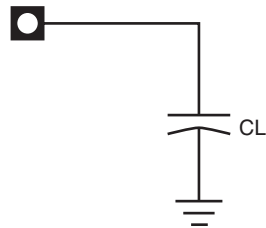
Table 12. EEPROM Interface Clock Requirements

Symbol	Parameter	Min	Typ	Max	Unit
fSK				1	MHz

Table 13. AC Test Loads for General Output Pins

Symbol	Signal Name	Value	Units
CL	TDO	10	pF
CL	APM_WAKEUP, PME#, SDP[7:0]	16	pF
CL	EEDI, EESK	18	pF
CL	RX_ACTIVITY, TX_ACTIVITY, LINK_UP	20	pF

Figure 1. AC Test Loads for General Output Pins



4.5 Timing Specifications

Note: Timing specifications are subject to change. Verify with your local Intel sales office that you have the latest information before finalizing a design.

4.5.1 PCI Bus Interface

4.5.1.1 PCI Bus Interface Clock

Table 14. PCI Bus Interface Clock Parameters

Symbol	Parameter ^a	PCI 66 MHz		PCI 33 MHz		Units
		Min	Max	Min	Max	
TCYC	CLK cycle time	15	30	30		ns
TH	CLK high time	6		11		ns

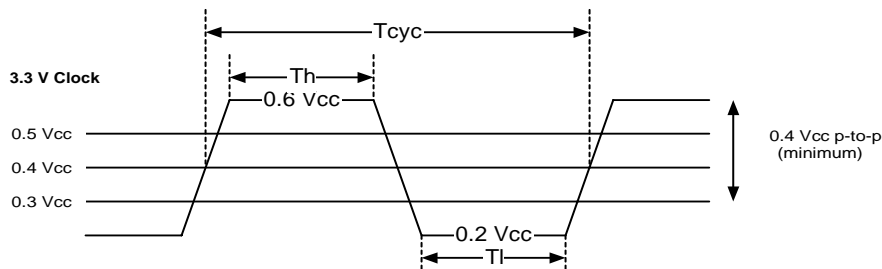


Table 14. PCI Bus Interface Clock Parameters

Symbol	Parameter ^a	PCI 66 MHz		PCI 33 MHz		Units
		Min	Max	Min	Max	
TL	CLK low time	6		11		ns
	CLK slew rate	1.5	4	1	4	V/ns
	RST# slew rate ^b	50		50		mV/ns

- a. Rise and fall times are specified in terms of the edge rate measured in V/ns. This slew rate must be met across the minimum peak-to-peak portion of the clock waveform as shown.
- b. The minimum RST# slew rate applies only to the rising (de-assertion) edge of the reset signal and ensures that system noise cannot render a monotonic signal to appear bouncing in the switching range.

Figure 2. PCI Clock Timing



4.5.1.2 PCI Bus Interface Timing

Table 15. PCI Bus Interface Timing Parameters

Symbol	Parameter	PCI 66MHz		PCI 33 MHz		Units
		Min	Max	Min	Max	
TVAL	CLK to signal valid delay: bussed signals	2	6	2	11	ns
TVAL(ptp)	CLK to signal valid delay: point-to-point signals	2	6	2	12	ns
TON	Float to active delay	2		2		ns
TOFF	Active to float delay		14		28	ns
TSU	Input setup time to CLK: bussed signals	3		7		ns
TSU(ptp)	Input setup time to CLK: point-to-point signals	5		10, 12		ns
TH	Input hold time from CLK	0		0		ns
TRRSU	REQ# to RST# setup time	10*TCYC		10*TCYC		ns
TRRH	RST# to REQ# hold time	0		0		ns

NOTES:

1. Output timing measurements are as shown.
2. REQ# and GNT# signals are point-to-point and have different output valid delay and input setup times than bussed signals. GNT# has a setup of 10 ns; REQ# has a setup of 12 ns. All other signals are bussed.
3. Input timing measurements are as shown.

Figure 3. PCI Bus Interface Output Timing Measurement

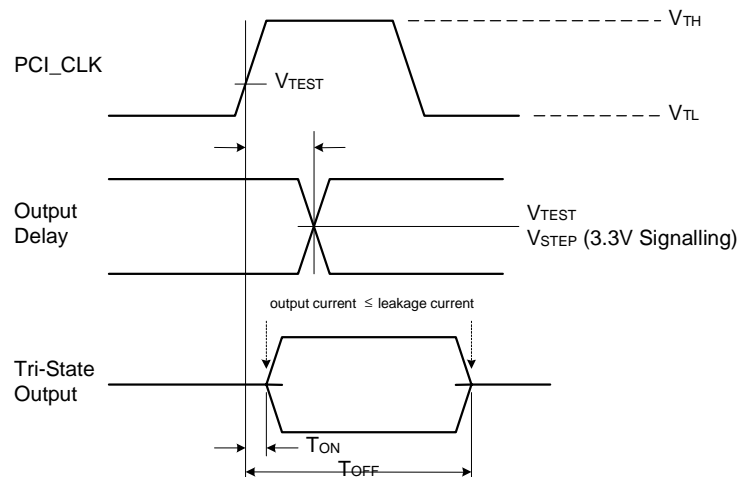


Figure 4. PCI Bus Interface Input Timing Measurement Conditions

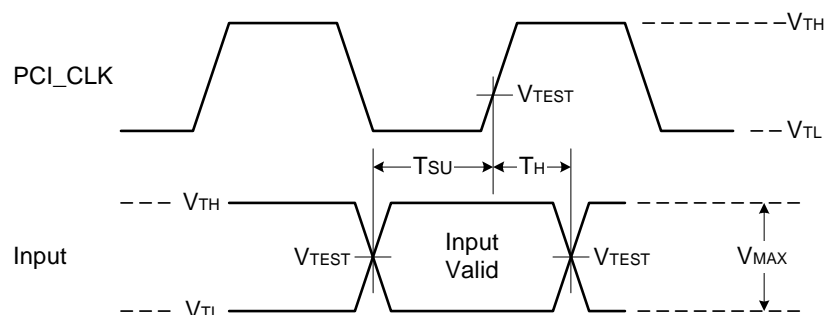


Table 16. PCI Bus Interface Timing Measurement Conditions

Symbol	Parameter	PCI 66 MHz 3.3 v	Unit
V _{TH}	Input measurement test voltage (high)	0.6*V _{CC}	V
V _{TL}	Input measurement test voltage (low)	0.2*V _{CC}	V
V _{TEST}	Output measurement test voltage	0.4*V _{CC}	V
	Input signal slew rate	1.5	V/ns

Figure 5. TVAL (max) Rising Edge Test Load

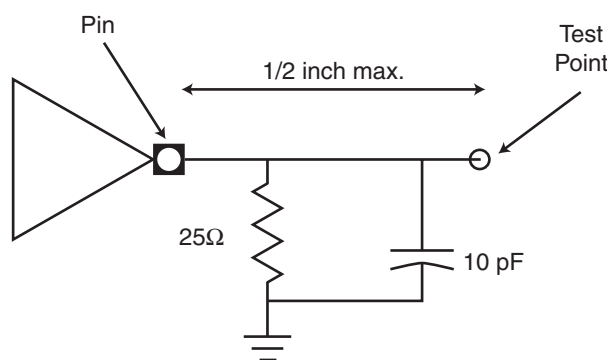


Figure 6. TVAL (max) Falling Edge Test Load

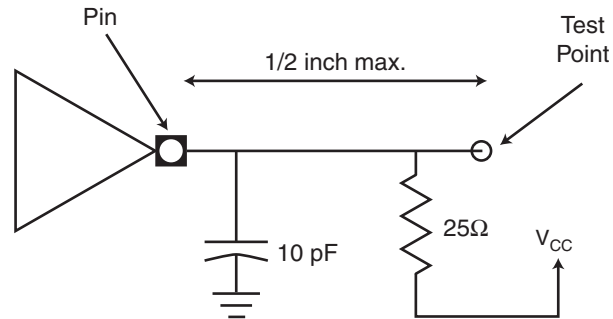


Figure 7. TVAL (min) Test Load

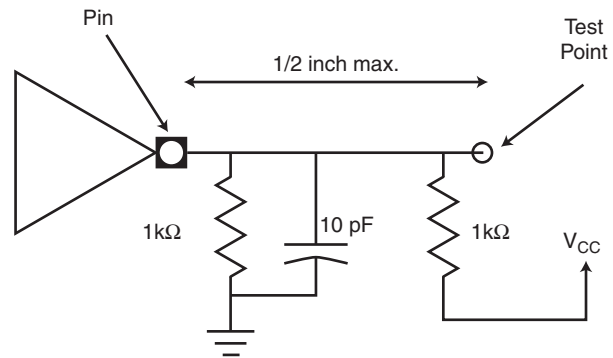
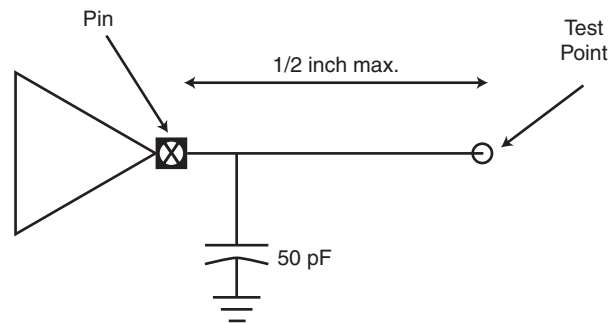


Figure 8. TVAL Test Load (PCI 5 V Signaling Environment)



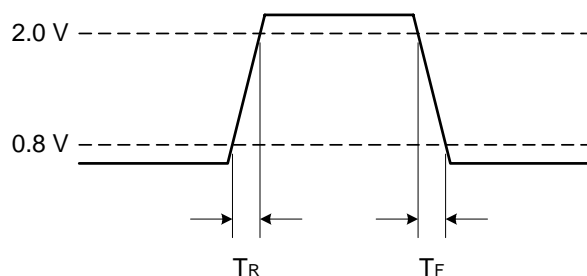
NOTE: Note: 50 pF load used for maximum times. Minimum times are specified with 0 pF load.

4.5.2 Link Interface Timing

Table 17. Rise and Fall Times

Symbol	Parameter	Condition	Min	Max	Unit
T _R	Clock rise time	0.8 V to 2.0 V	0.7		ns
T _F	Clock fall time	2.0 V to 0.8 V	0.7		ns
T _R	Data rise time	0.8 to 2.0 V	0.7		ns
T _F	Data fall time	2.0 V to 0.8 V	0.7		ns

Figure 9. Link Interface Rise/Fall Timing



4.5.3 EEPROM Interface

Table 18. Link Interface Clock Requirements

Symbol	Parameter	Min	Typ	Max	Unit
TPW	EESK pulse width		T _{PERIOD} *128		ns

Table 19. Link Interface Clock Requirements

Symbol	Parameter ^a	Min	Typ	Max	Unit
TDOS	EEDO setup time	TCYC*2			ns
TDOH	EEDO hold time	0			ns

a. The EEDO setup and hold time is a function of the CLK cycle time but is referenced to EESK.

5.0 Package and Pinout Information

This section describes the 82540EM device, manufactured in a 196-lead ball grid array measuring 15mm X 15mm. External product identification is shown in Figure 10. The nominal ball pitch is 1mm. The pin number-to-signal mapping is indicated beginning with Table 36.

5.1 Device Identification

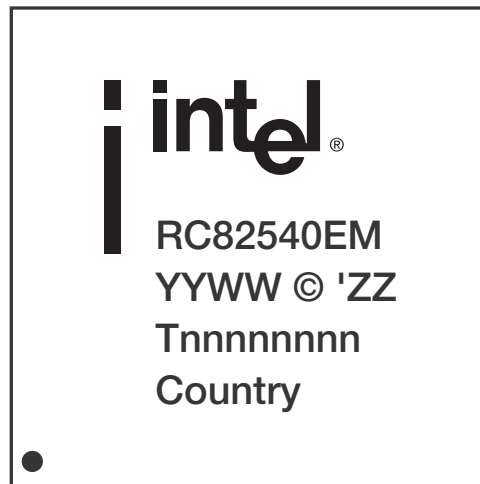


Figure 10. 82540EM Device Identification Markings

82540EM	Product Name
YYWW	Date Code
Tnnnnnnnn	Lot Trace Code
(c)'ZZ	Copyright Information
Country	Country of Origin Assembly

NOTE: "●" indicates the location of pin 1. It is not an actual mark on the device

5.2 Package Information

The 82540EM device is a 196-lead ball grid array (TFBGA) measuring 15 mm². The package dimensions are detailed in Figure 11. The nominal ball pitch is 1 mm.

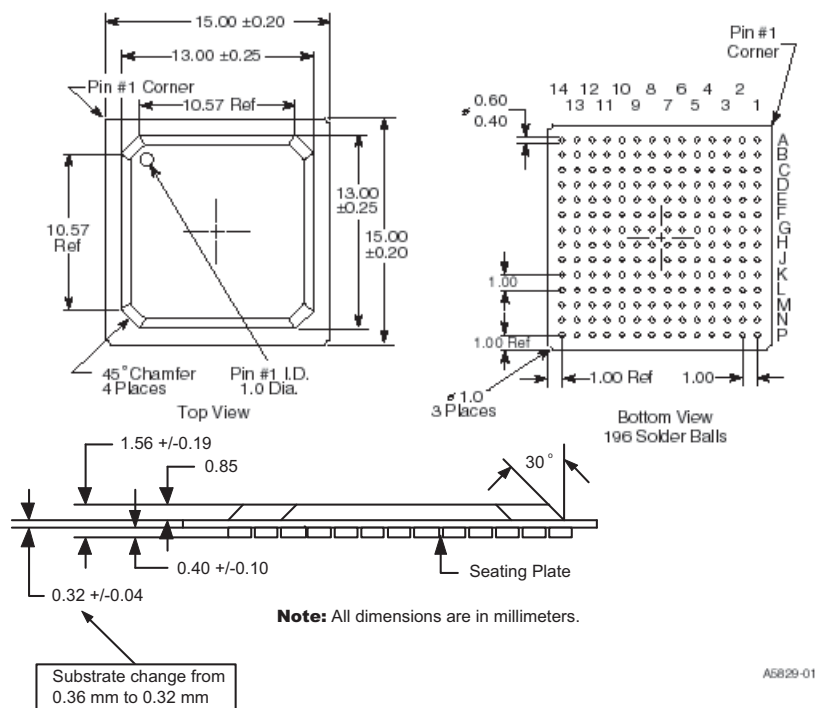


Figure 11. Mechanical Specifications

Note: No changes to existing soldering processes are needed for the 0.32 mm substrate change.

5.3 Thermal Specifications

The 82540EM device is specified for operation when the ambient temperature (TA) is within the range of 0° C to 70° C.

TC (case temperature) is calculated using the equation:

$$TC = TA + P (\theta_{JA} - q_{JC})$$

TJ (junction temperature) is calculated using the equation:

$$TJ = TA + P \theta_{JA}$$

P (power consumption) is calculated by using the typical ICC, as indicated in Table 4, and nominal VCC. The thermal resistances are shown in Table 18.

Table 18. Thermal Characteristics

Symbol	Parameter	Value at specified airflow (m/s)				Units
		0	1	2	3	
θ_{JA}	Thermal resistance, junction-to-ambient	28.1	25.0	23.7	22.8	°C/Watt
θ_{JC}	Thermal resistance, junction-to-case	6.1	6.1	6.1	6.1	°C/Watt

Thermal resistances are determined empirically with test devices mounted on standard thermal test boards. Real system designs may have different characteristics due to board thickness, arrangement of ground planes, and proximity of other components. The case temperature measurements should be used to assure that the 82540EM device is operating under recommended conditions.

5.4 Pinout Information

Table 19. PCI Address, Data, and Control Signals

Signal	Pin	Signal	Pin	Signal	Pin
AD[0]	N7	AD[16]	K1	C/BE#[0]	M4
AD[1]	M7	AD[17]	E3	C/BE#[1]	L3
AD[2]	P6	AD[18]	D1	C/BE#[2]	F3
AD[3]	P5	AD[19]	D2	C/BE#[3]	C4
AD[4]	N5	AD[20]	D3	PAR	J1
AD[5]	M5	AD[21]	C1	FRAME#	F2
AD[6]	P4	AD[22]	B1	IRDY#	F1
AD[7]	N4	AD[23]	B2	TRDY#	G3
AD[8]	P3	AD[24]	B4	STOP#	H1
AD[9]	N3	AD[25]	A5	DEVSEL#	H3
AD[10]	N2	AD[26]	B5	VIO	G2
AD[11]	M1	AD[27]	B6	IDSEL	A4
AD[12]	M2	AD[28]	C6		
AD[13]	M3	AD[29]	C7		
AD[14]	L1	AD[30]	A8		
AD[15]	L2	AD[31]	B8		

Table 20. PCI Arbitration Signals

Signal	Pin
REQ#	C3
GNT#	J3

Table 21. Interrupt Signals

Signal	Pin
INTA#	H2

Table 22. System Signals

Signal	Pin	Signal	Pin	Signal	Pin
CLK	G1	M66EN	C2	RST#	B9

Table 23. Error Reporting Signals

Signal	Pin	Signal	Pin
SERR#	A2	PERR#	J2

Table 24. Power Management Signals

Signal	Pin	Signal	Pin
LAN_PWR_GOOD	A9	AUX_PWR	J12
PME#	A6	APM_WAKEUP	C5

Table 25. Impedance Compensation Signals

Signal	Pin	Signal	Pin
ZN_COMP	H4	ZP_COMP	G4

Table 26. SMB Signals

Signal	Pin	Signal	Pin	Signal	Pin
SMBCLK	A10	SMBDATA	C9	SMB_ALERT#	B10

Table 27. EEPROM and Serial FLASH Interface Signals

Signal	Pin	Signal	Pin	Signal	Pin
EESK	M10	EEDI	P10	FL_SCK	N9
EEDO	N10	FL_CE#	M9	FLSH_SO	P9
EECS	P7	FL_SI	M11		

Table 28. LED Signals

Signal	Pin	Signal	Pin
LED0 / LINK#	A12	LED2 / LINK100#	B11
LED1 / ACT#	C11	LED3 / LINK1000#	B12

Table 29. Other Signals

Signal	Pin	Signal	Pin	Signal	Pin
SDP[0]	N14	SDP[6]	N13	CTRL15	P11
SDP[1]	P13	SDP[7]	M12	CTRL25	B13

Table 30. IEEE Test Signals

Signal	Pin
CLK_VIEW	M8

Table 31. PHY Signals

Signal	Pin	Signal	Pin	Signal	Pin
XTAL1	K14	MDI[0]+	C13	MDI[2]+	F13
XTAL2	J14	MDI[1]-	E14	MDI[3]-	H14
REF	B14	MDI[1]+	E13	MDI[3]+	H13
MDI[0]-	C14	MDI[2]-	F14		

Table 32. Test Interface Signals

Signal	Pin	Signal	Pin	Signal	Pin
JTAG_TCK	L14	JTAG_TDO	M14	JTAG_TRST#	L13
JTAG_TDI	M13	JTAG_TMS	L12	TEST	A13

Table 33. Digital Power Signals

Signal	Pin	Signal	Pin	Signal	Pin
DVDD (1.5V)	E11	DVDD (1.5V)	J8	DVDD (1.5V)	L9
DVDD (1.5V)	E12	DVDD (1.5V)	J9	DVDD (1.5V)	L10
DVDD (1.5V)	G5	DVDD (1.5V)	J10	VDDO (3.3V)	A3
DVDD (1.5V)	G6	DVDD (1.5V)	J11	VDDO (3.3V)	A7
DVDD (1.5V)	G13	DVDD (1.5V)	K5	VDDO (3.3V)	A11
DVDD (1.5V)	H5	DVDD (1.5V)	K6	VDDO (3.3V)	E1
DVDD (1.5V)	H6	DVDD (1.5V)	K7	VDDO (3.3V)	K3
DVDD (1.5V)	H7	DVDD (1.5V)	K8	VDDO (3.3V)	K4
DVDD (1.5V)	H8	DVDD (1.5V)	K9	VDDO (3.3V)	K13
DVDD (1.5V)	H11	DVDD (1.5V)	K10	VDDO (3.3V)	N6
DVDD (1.5V)	J5	DVDD (1.5V)	K11	VDDO (3.3V)	N8
DVDD (1.5V)	J6	DVDD (1.5V)	L4	VDDO (3.3V)	P2
DVDD (1.5V)	J7	DVDD (1.5V)	L5	VDDO (3.3V)	P12

Table 34. Analog Power Signals

Signal	Pin	Signal	Pin	Signal	Pin
AVDDL (2.5 V)	D9	AVDDL (2.5 V)	G12	AVDDL (2.5 V)	L8
AVDDL (2.5 V)	D11				

Table 35. Grounds and No Connect Signals

Signal	Pin	Signal	Pin	Signal	Pin	Signal	Pin
GND	B3	GND	E7	GND	G9	NC	A1
GND	B7	GND	E8	GND	G10	NC	A14
GND	C10	GND	E9	GND	G11	NC	C8
GND	C12	GND	E10	GND	G14	NC	D10
GND	D4	GND	F4	GND	H9	NC	D12
GND	D5	GND	F5	GND	H10	NC	D14
GND	D6	GND	F6	GND	K2	NC	F12
GND	D7	GND	F7	GND	K12	NC	H12
GND	D8	GND	F8	GND	L6	NC	J4
GND	D13	GND	F9	GND	L11	NC	J13
GND	E2	GND	F10	GND	M6	NC	L7
GND	E4	GND	F11	GND	N1	NC	N11
GND	E5	GND	G7	GND	N12	NC	P1
GND	E6	GND	G8	GND	P8	NC	P14

Table 36. Signal Names in Pin Order (Sheet 1 of 6)

Signal Name	Pin
NC	A1
SERR#	A2
VDDO (3.3V)	A3
IDSEL	A4
AD[25]	A5
PME#	A6
VDDO (3.3V)	A7
AD[30]	A8
LAN_PWR_GOOD	A9
SMBCLK	A10
VDDO (3.3V)	A11
LED0 / LINK_UP#	A12
TEST	A13
NC	A14
AD[22]	B1
AD[23]	B2
GND	B3
AD[24]	B4

Table 36. Signal Names in Pin Order (Sheet 2 of 6) (Continued)

Signal Name	Pin
AD[26]	B5
AD[27]	B6
GND	B7
AD[31]	B8
RST#	B9
SMB_ALERT#	B10
LED2 / LINK100#	B11
LED3 / LINK1000#	B12
CTRL25	B13
IEEE_TEST+	B14
AD[21]	C1
M66EN	C2
REQ#	C3
C/BE#[3]	C4
APM_WAKEUP	C5
AD[28]	C6
AD[29]	C7
NC	C8
SMBDATA	C9
GND	C10
LED1 / ACT#	C11
GND	C12
MDI[0]+	C13
MDI[0]-	C14
AD[18]	D1
AD[19]	D2
AD[20]	D3
GND	D4
GND	D5
GND	D6
GND	D7
GND	D8
AVDDL (2.5 V)	D9
NC	D10
AVDDL (2.5 V)	D11
NC	D12
GND	D13
IEEE_TEST-	D14

Table 36. Signal Names in Pin Order (Sheet 3 of 6) (Continued)

Signal Name	Pin
VDDO (3.3V)	E1
GND	E2
AD[17]	E3
GND	E4
GND	E5
GND	E6
GND	E7
GND	E8
GND	E9
GND	E10
DVDD (1.5V)	E11
DVDD (1.5V)	E12
MDI[1]+	E13
MDI[1]-	E14
IRDY#	F1
FRAME#	F2
C/BE#[2]	F3
GND	F4
GND	F5
GND	F6
GND	F7
GND	F8
GND	F9
GND	F10
GND	F11
NC	F12
MDI[2]+	F13
MDI[2]-	F14
CLK	G1
VIO	G2
TRDY#	G3
ZP_COMP	G4
DVDD (1.5V)	G5
DVDD (1.5V)	G6
GND	G7
GND	G8
GND	G9
GND	G10

Table 36. Signal Names in Pin Order (Sheet 4 of 6) (Continued)

Signal Name	Pin
GND	G11
AVDDL (2.5 V)	G12
DVDD (1.5V)	G13
GND	G14
STOP#	H1
INTA#	H2
DEVSEL#	H3
ZN_COMP	H4
DVDD (1.5V)	H5
DVDD (1.5V)	H6
DVDD (1.5V)	H7
DVDD (1.5V)	H8
GND	H9
GND	H10
DVDD (1.5V)	H11
NC	H12
MDI[3]+	H13
MDI[3]-	H14
PAR	J1
PERR#	J2
GNT#	J3
NC	J4
DVDD (1.5V)	J5
DVDD (1.5V)	J6
DVDD (1.5V)	J7
DVDD (1.5V)	J8
DVDD (1.5V)	J9
DVDD (1.5V)	J10
DVDD (1.5V)	J11
AUX_PWR	J12
NC	J13
XTAL2	J14
AD[16]	K1
GND	K2
VDDO (3.3V)	K3
VDDO (3.3V)	K4
DVDD (1.5V)	K5
DVDD (1.5V)	K6

Table 36. Signal Names in Pin Order (Sheet 5 of 6) (Continued)

Signal Name	Pin
DVDD (1.5V)	K7
DVDD (1.5V)	K8
DVDD (1.5V)	K9
DVDD (1.5V)	K10
DVDD (1.5V)	K11
GND	K12
VDDO (3.3V)	K13
XTAL1	K14
AD[14]	L1
AD[15]	L2
C/BE#[1]	L3
DVDD (1.5V)	L4
DVDD (1.5V)	L5
GND	L6
NC	L7
AVDDL (2.5 V)	L8
DVDD (1.5V)	L9
DVDD (1.5V)	L10
GND	L11
JTAG_TMS	L12
JTAG_TRST#	L13
JTAG_TCK	L14
AD[11]	M1
AD[12]	M2
AD[13]	M3
C/BE#[0]	M4
AD[5]	M5
GND	M6
AD[1]	M7
CLK_VIEW	M8
FL_CE#	M9
EESK	M10
FL_SI	M11
SDP[7]	M12
JTAG_TDI	M13
JTAG_TDO	M14
GND	N1
AD[10]	N2

Table 36. Signal Names in Pin Order (Sheet 6 of 6) (Continued)

Signal Name	Pin
AD[9]	N3
AD[7]	N4
AD[4]	N5
VDDO (3.3V)	N6
AD[0]	N7
VDDO (3.3V)	N8
FL_SCK	N9
EEDO	N10
NC	N11
GND	N12
SDP[6]	N13
SDP[0]	N14
NC	P1
VDDO (3.3V)	P2
AD[8]	P3
AD[6]	P4
AD[3]	P5
AD[2]	P6
EECS	P7
GND	P8
FLSH_SO	P9
EEDI	P10
CTRL15	P11
VDDO (3.3V)	P12
SDP[1]	P13
NC	P14

5.5 Visual Pin Reference

	A	B	C	D	E	F	G	H	J	K	L	M	N	P
1	NC	AD[22]	AD[21]	AD[18]	VDDO (3.3V)	IRDY#	CLK	STOP#	PAR	AD[16]	AD[14]	AD[11]	GND	NC
2	SERR#	AD[23]	M66EN	AD[19]	GND	FRAME#	VIO	INTA#	PERR#	GND	AD[15]	AD[12]	AD[10]	VDDO (3.3V)
3	VDDO (3.3V)	GND	REQ#	AD[20]	AD[17]	C/BE#[2]	TRDY#	DVSEL#	GNT#	VDDO (3.3V)	C/B3#[1]	AD[13]	AD[9]	AD[8]
4	IDSEL	AD[24]	C/BE#[3]	GND	GND	GND	ZP_COMP	ZN_COMP	NC	VDDO (3.3V)	DVDD (1.5V)	C/BE#[0]	AD[7]	AD[6]
5	AD[25]	AD[26]	APM_WAKEUP	GND	GND	GND	DVDD (1.5V)	DVDD (1.5V)	DVDD (1.5V)	DVDD (1.5V)	DVDD (1.5V)	AD[5]	AD[4]	AD[3]
6	PME#	AD[27]	AD[28]	GND	GND	GND	DVDD (1.5V)	DVDD (1.5V)	DVDD (1.5V)	DVDD (1.5V)	GND	GND	VDDO (3.3V)	AD[2]
7	VDDO (3.3V)	GND	AD[29]	GND	GND	GND	GND	DVDD (1.5V)	DVDD (1.5V)	DVDD (1.5V)	NC	AD[1]	AD[0]	EECS
8	AD[30]	AD[31]	NC	GND	GND	GND	GND	DVDD (1.5V)	DVDD (1.5V)	DVDD (1.5V)	AVDDL (2.5V)	CLK_VIEW	VDDO (3.3V)	GND
9	LAN_PWR_GOOD	RST#	SMBDATA	AVDDL (2.5V)	GND	GND	GND	GND	DVDD (1.5V)	DVDD (1.5V)	DVDD (1.5V)	FLSH_CE#	FLSH_SCK	FLSH_SO
10	SMBCLK	SMB_ALERT#	GND	NC	GND	GND	GND	GND	DVDD (1.5V)	DVDD (1.5V)	DVDD (1.5V)	EESK	EEDO	EEDI
11	VDDO (3.3V)	LED2/ LINK100#	LED1/ ACTIVITY#	AVDDL (2.5V)	DVDD (1.5V)	GND	GND	DVDD (1.5V)	DVDD (1.5V)	DVDD (1.5V)	GND	FLSH_SI	NC	CTRL15
12	LED0/ LINK_UP#	LED3/ LINK1000#	GND	NC	DVDD (1.5V)	NC	AVDDL (2.5V)	NC	AUX_PWR	GND	JTAG_TMS	SDP[7]	GND	VDDO (3.3V)
13	TEST	CTRL25	MDI[0]+	GND	MDI[1]+	MDI[2]+	DVDD (1.5V)	MDI[3]+	NC	VDDO (3.3V)	JTAG_TRST#	JTAG_TDI	SDP[6]	SDP[1]
14	NC	IEEE_TEST+	MDI[0]-	IEEE_TEST-	MDI[1]+	MDI[2]+	GND	MDI[3]+	XTAL2	XTAL1	JTAG_TCK	JTAG_TDO	SDP[0]	NC

Figure 12. Ball Grid Array / Pin Reference for 196-TFBGA (Thru-the-Top View)



Note: This page is intentionally left blank.